

**DAMMON ENGINEERING, INC.**

EMMETT DAMMON

ARCHITECT  
ROBERT SOLLBERGER

1095 FLORIDA AVENUE  
SLIDELL, LA. 70458  
985-649-5832

WEBSITE:  
WWW.DAMMONENGINEERING.COM

EMAIL:  
DAMMONENG@BELLSOUTH.NET

ARCHITECTURE  
ENGINEERING  
STUDIES  
PLANNING  
INVESTIGATION  
EXPERT WITNESS

**NEW OFFICE BUILDING**

PLATFORM CRANE  
POWELL DRIVE  
SLIDELL, LA

**ELECTRICAL PLAN SUITE A**

REV:

SCALE: AS NOTED

JOB#: 1898

DATE: 10-8-07

SHEET 19

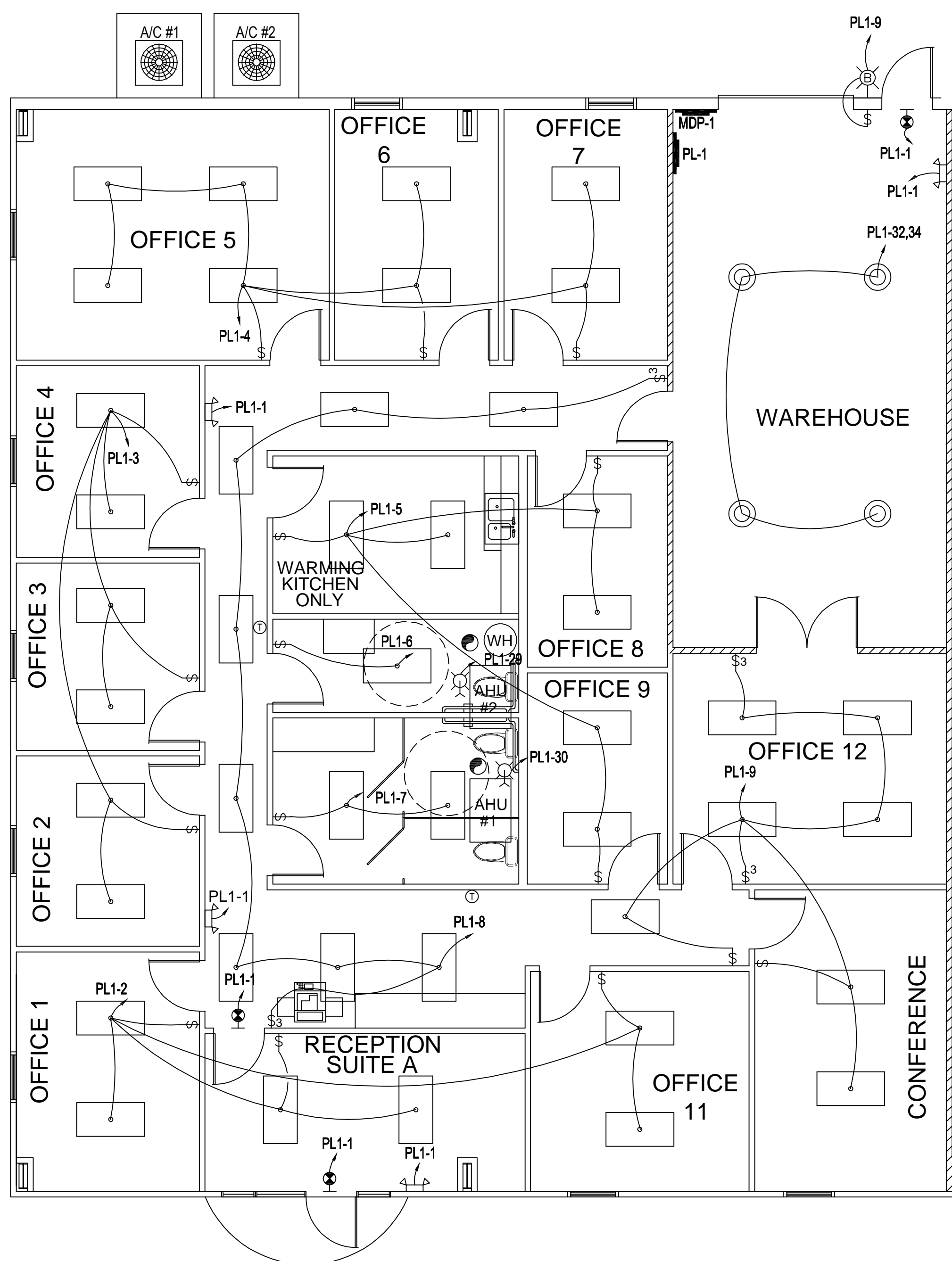
**E-1**

OF 25

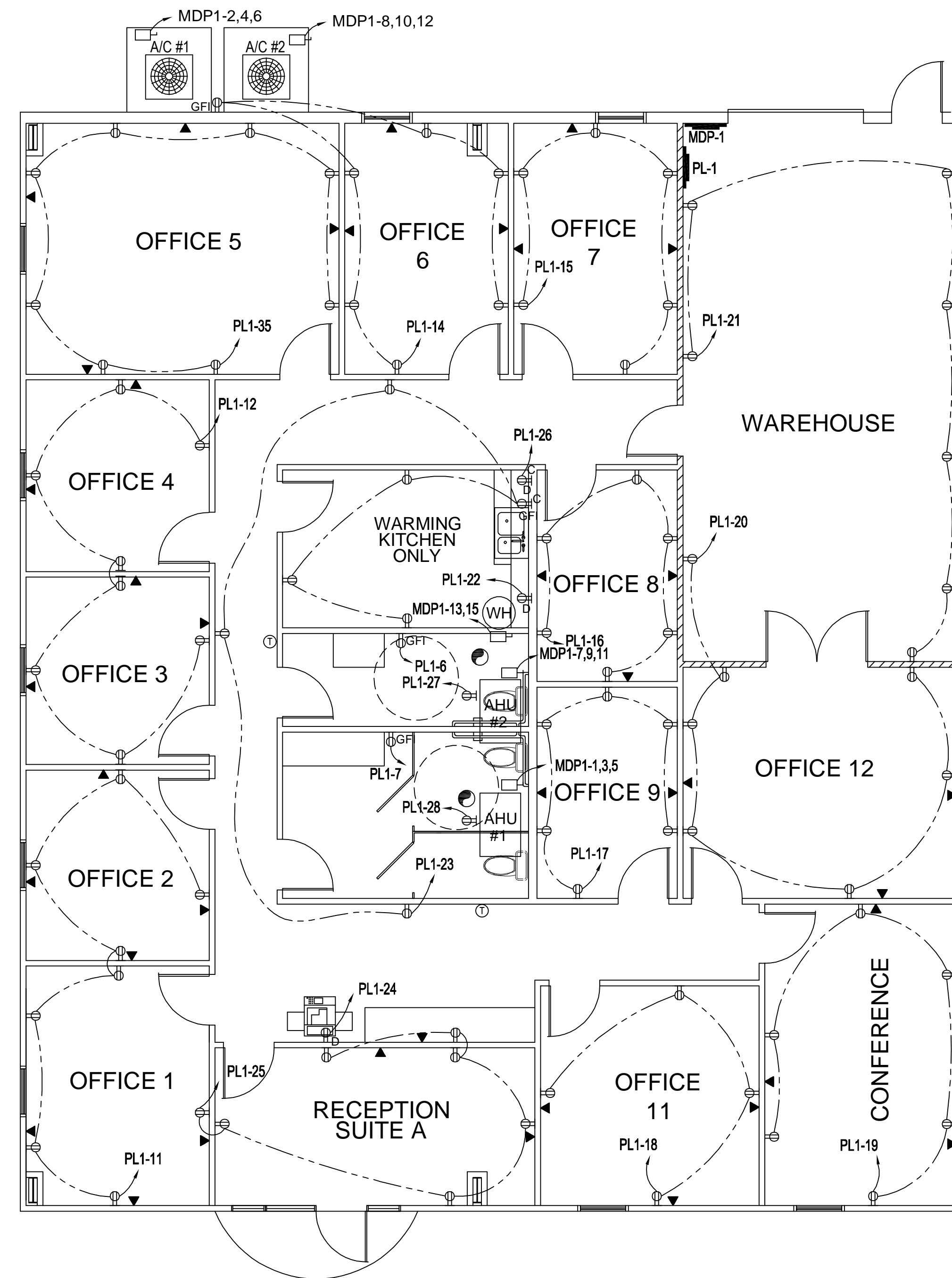
**LEGEND**

- - 2'x4' RECESSED FLUORESCENT LAMP, STEEL HOUSING
- ⌂ - EMERGENCY LIGHT WITH 90 MIN. BATTERY BACKUP
- ⊕ - 120V, 20A DUPLEX RECEPTACLE
- ⊕GFI - 120V, GFI RECEPTACLE
- ⊕D - 120V, DEDICATED RECEPTACLE
- ⊕GFI - 120V, GFI RECEPTACLE AT COUNTER HEIGHT
- ⊏ - DISCONNECT
- ⊏ - POWER PANEL
- ⊏ - SWITCH
- ⊏<sup>3</sup> - 3-WAY SWITCH
- ⊕ - EXIT LIGHT, 90 MINUTE BATTERY BACK-UP
- ⊕ - THERMOSTAT
- ⊕ - HIGH BAY LIGHT
- ⊕ - TELEPHONE / COMPUTER
- ⊕ - EXHAUST FAN
- ⊕(WH) - 20 GAL WATER HEATER
- ⊕ - PULL CHAIN LIGHT
- ⊕ - EXTERIOR WATERPROOF WALL MOUNTED LIGHT W/ 90 MIN. BATTERY BACKUP

FOR ELECTRICAL NOTES SEE E-5



**LIGHTING PLAN SUITE A**  
SCALE: 3/16"=1'-0"



**POWER PLAN SUITE A**  
SCALE: 3/16"=1'-0"

PANEL: MDP-1		LOCATION: SUITE A		FEEDER SOURCE: CLECO		VOLTAGE: 208/120V, 225A 3Ø, 4W MLO W/ 225A MAIN		ENCLOSURE: SURFACE MOUNTED W/EQUIPMENT GND BAR		LOAD CENTER OR EQUAL	
CCT NO.	THIN SIZE	LOAD DESCRIPTION	BREAKER AMP	LOAD (VA)	PHASE	LOAD DESCRIPTION	BREAKER AMP	LOAD (VA)	PHASE	THIN SIZE	CCT NO.
1		ALL EMERGENCY/EXIT LIGHTS	20	100		OFFICE 1, RECEPTION AREA AND OFFICE 11 LIGHTS	20	1200		#12	2
3	#6	AHU #1 (INSIDE) 20 KW HEAT	60	30,000		OFFICES 2, 3, AND 4 LIGHTS	20	1200		#12	4
5						KITCHEN, OFFICES 8 & 9 LIGHTS	20	1200		#12	6
7	#6	AHU #2 (INSIDE) 20 KW HEAT	60	30,000		WOMEN'S REST ROOM LIGHTS AND RECEPTACLES	20	560		#12	8
9						OFFICE 12, CONF. LIGHTS AND OUTSIDE BATTERY BACK UP LIGHT	20	1500		#12	10
11						OFFICES 1 & 2 RECEPTACLES	20	1280		#12	12
13	#10	WATER HEATER 20 GALLONS	30	4,500		SPACE	20	-		#12	14
15						SPACE	20	-		#12	16
17						SPACE	20	-		#12	18
19						SPACE	20	-		#12	20
21						SPACE	20	-		#12	22
23						SPACE	20	-		#12	24
25						SPACE	20	-		#12	26
27						SPACE	20	-		#12	28
29						SPACE	20	-		#12	30
31						SPACE	20	-		#12	32
33						SPACE	20	-		#12	34
35						SPACE	20	-		#12	36
37						SPACE	20	-		#12	38
39	3/0	PL-1 PANEL	225	9,700		SPACE	-	-		#12	40
41						SPACE	-	-		#12	42
		TOTAL CONNECTED LOAD (VA)									
		A=29,283		B=26,983		C=26,813					
		SOLID NEUTRAL NEUTRAL WIRE (W)		GROUND BUS E		GROUND WIRE (G)					

PANEL: PL-1		LOCATION: SUITE A		FEEDER SOURCE: MDP-1		VOLTAGE: 208/120V, 225A 3Ø, 4W MLO		ENCLOSURE: SURFACE MOUNTED W/EQUIPMENT GND BAR		LOAD CENTER OR EQUAL	
CCT NO.	THIN SIZE	LOAD DESCRIPTION	BREAKER AMP	LOAD (VA)	PHASE	LOAD DESCRIPTION	BREAKER AMP	LOAD (VA)	PHASE	THIN SIZE	CCT NO.
1	#12	ALL EMERGENCY/EXIT LIGHTS	20	100		OFFICE 1, RECEPTION AREA AND OFFICE 11 LIGHTS	20	1200		#12	2
3	#12	OFFICES 2, 3, AND 4 LIGHTS	20	1200		OFFICES 2, 3, AND 4 LIGHTS	20	1200		#12	4
5	#12	KITCHEN, OFFICES 8 & 9 LIGHTS	20	1200		OFFICES 2, 3, AND 4 LIGHTS	20	1200		#12	6
7	#12	WOMEN'S REST ROOM LIGHTS AND RECEPTACLES	20	560		OFFICES 2, 3, AND 4 LIGHTS	20	1200		#12	8
9	#12	OFFICE 12, CONF. LIGHTS AND OUTSIDE BATTERY BACK UP LIGHT	20	1500		OFFICES 2, 3, AND 4 LIGHTS	20	1200		#12	10
11	#12	OFFICES 1 & 2 RECEPTACLES	20	1280		OFFICES 2, 3, AND 4 LIGHTS	20	1200		#12	12
13		SPACE	20	-		OFFICES 2, 3, AND 4 LIGHTS	20	1200		#12	14
15	#12	OFFICE 7 RECEPTACLES	20	960		OFFICES 2, 3, AND 4 LIGHTS	20	1200		#12	16
17	#12	OFFICE 9 RECEPTACLES	20	960		OFFICES 2, 3, AND 4 LIGHTS	20	1200		#12	18
19	#12	CONFERENCE ROOM RECEPTACLES	20	960		OFFICES 2, 3, AND 4 LIGHTS	20	1200		#12	20
21	#12	WAREHOUSE RECEPTACLES	20	960		OFFICES 2, 3, AND 4 LIGHTS	20	1200		#12	22
23	#12	KITCHEN & HALL RECEPTACLES	20	960		OFFICES 2, 3, AND 4 LIGHTS	20	1200		#12	24
25	#12	RECEPTION AREA RECEPTACLES	20	960		OFFICES 2, 3, AND 4 LIGHTS	20	1200		#12	26
27	#12	AHU #2 RECEPTACLE	20	160		OFFICES 2, 3, AND 4 LIGHTS	20	1200		#12	28
29	#12	AHU #1 LIGHT	20	100		OFFICES 2, 3, AND 4 LIGHTS	20	1200		#12	30
31		SPACE	20	-		OFFICES 2, 3, AND 4 LIGHTS	20	1200		#12	32
33		SPACE	20	-		OFFICES 2, 3, AND 4 LIGHTS	20	1200		#12	34
35	#12	OFFICE 5 RECEPTACLES	20	1280		OFFICES 2, 3, AND 4 LIGHTS	20	1200		#12	36
37		SPACE	20	-		OFFICES 2, 3, AND 4 LIGHTS	20	1200		#12	38
39		SPACE	20	-		OFFICES 2, 3, AND 4 LIGHTS	20	1200		#12	40
41		SPACE	20	-		OFFICES 2, 3, AND 4 LIGHTS	20	1200		#12	42
		TOTAL CONNECTED LOAD (VA)									
		A=9,700		B=9,400		C=9,480					
		SOLID NEUTRAL NEUTRAL WIRE (W)		GROUND BUS E		GROUND WIRE (G)					