

DAMMON ENGINEERING, INC.
EMMETT DAMMON

ARCHITECT
ROBERT SOLLBERGER

1095 FLORIDA AVENUE
SLIDELL, LA. 70458
985-649-5832

WEBSITE:
WWW.DAMMONENGINEERING.COM

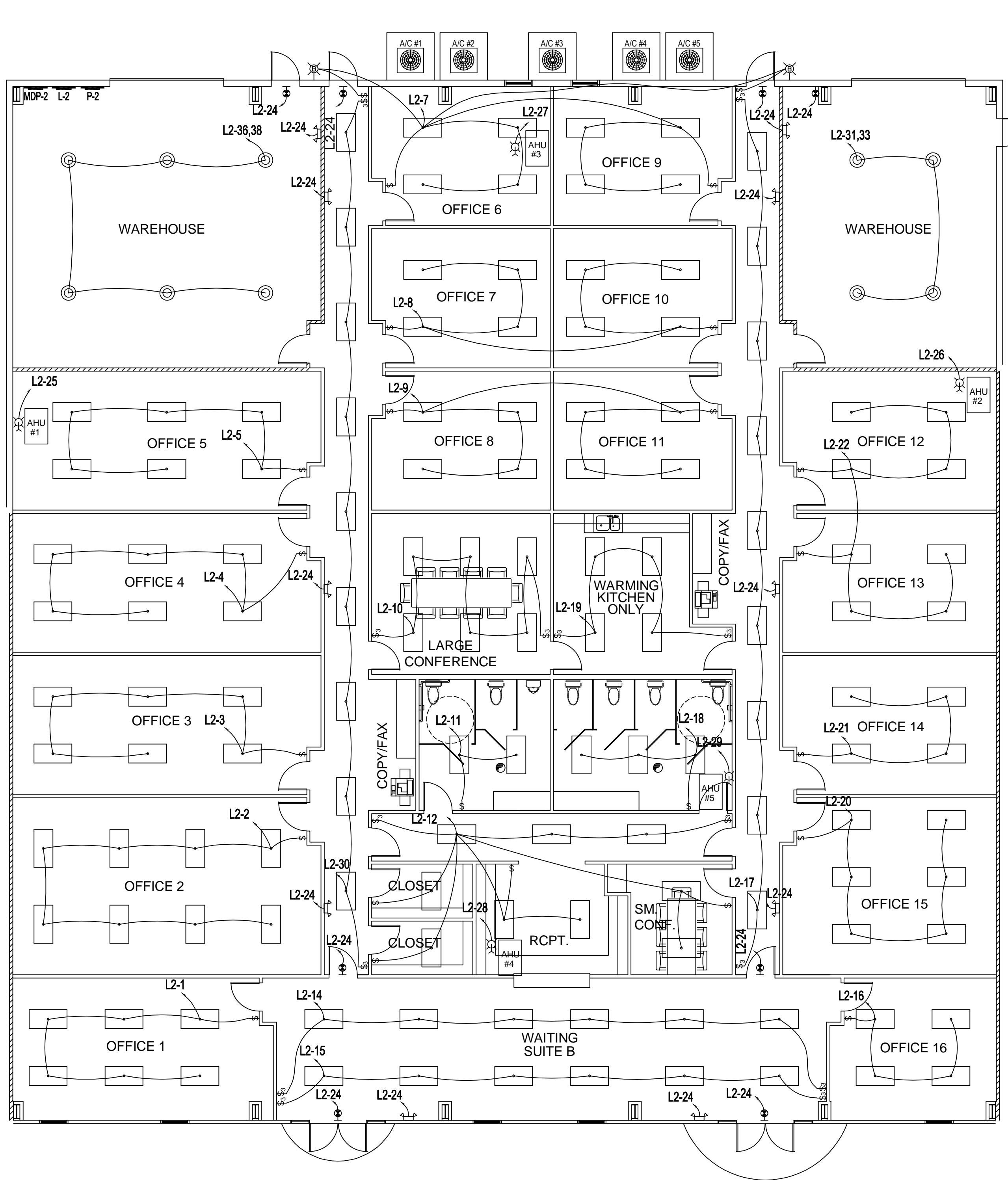
EMAIL:
DAMMONENG@BELLSOUTH.NET

ARCHITECTURE
ENGINEERING
STUDIES
PLANNING
INVESTIGATION
EXPERT WITNESS

NEW OFFICE BUILDING

PLATFORM CRANE
POWELL DRIVE
SLIDELL, LA

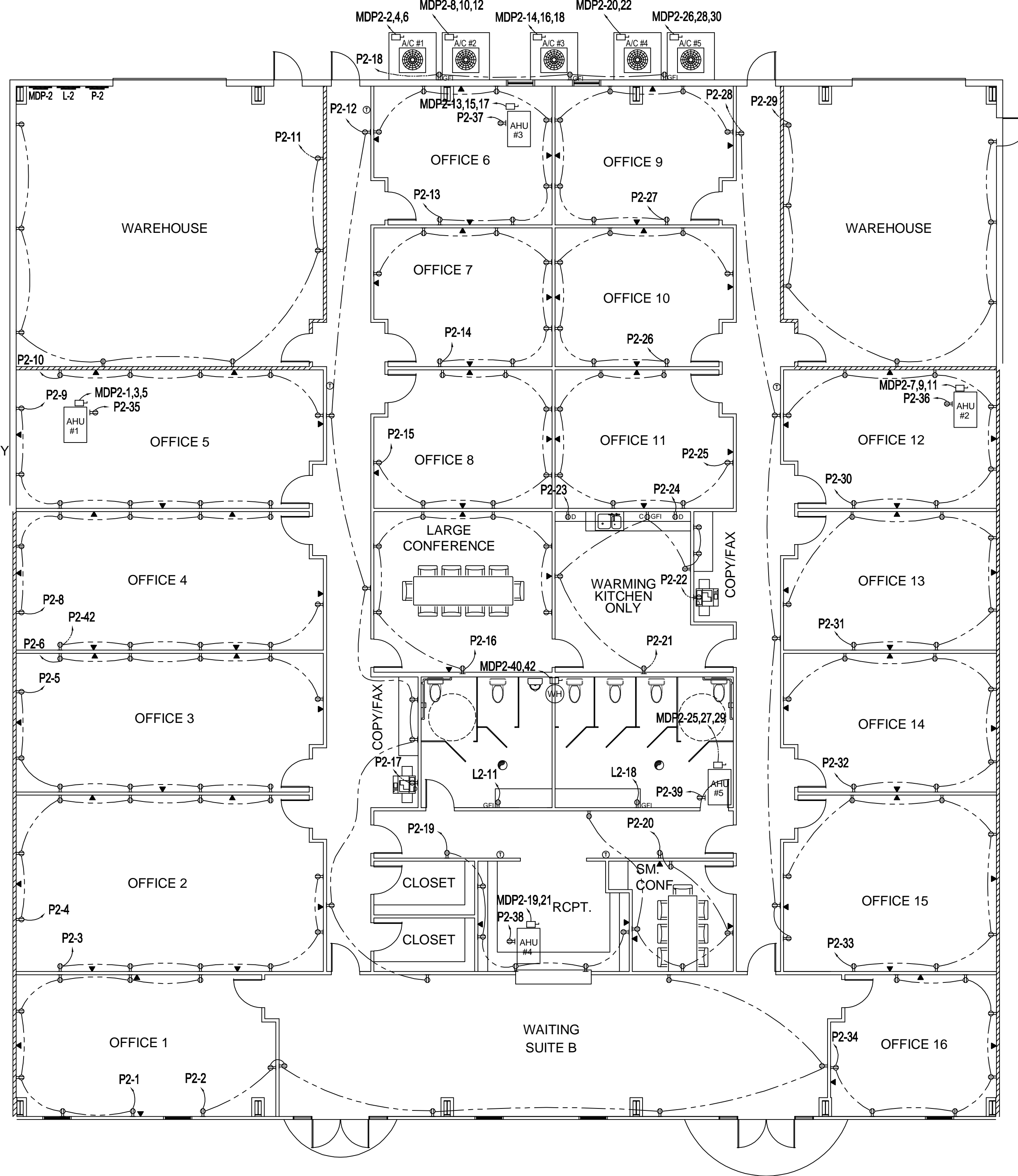
ELECTRICAL PLAN SUITE B



LIGHTING PLAN SUITE B
SCALE: 1/8"=1'-0"

- LEGEND**
- - 2'x4' RECESSED FLUORESCENT LAMP, STEEL HOUSING
 - ⚡ - EMERGENCY LIGHT WITH 90 MIN. BATTERY BACKUP
 - ⊕ - 120V, 20A DUPLEX RECEPTACLE
 - ⊕_{GFI} - 120V, GFI RECEPTACLE
 - ⊕_D - 120V, DEDICATED RECEPTACLE
 - ⊕_{GFI} - 120V, GFI RECEPTACLE AT COUNTER HEIGHT
 - ⊠ - DISCONNECT
 - ⊠ - POWER PANEL
 - ⊠ - SWITCH
 - ⊠ - 3-WAY SWITCH
 - ⊠ - EXIT LIGHT, 90 MINUTE BATTERY BACK-UP
 - ⊠ - THERMOSTAT
 - ⊠ - HIGH BAY LIGHT
 - ⊠ - TELEPHONE / COMPUTER
 - ⊠ - EXHAUST FAN
 - ⊠ - 20 GAL WATER HEATER
 - ⊠ - PULL CHAIN LIGHT
 - ⊠ - EXTERIOR WATERPROOF WALL MOUNTED LIGHT W/ 90 MIN. BATTERY BACKUP

FOR ELECTRICAL NOTES SEE E-5



POWER PLAN SUITE B
SCALE: 1/8"=1'-0"

PANEL: MDP-2
LOCATION: SUITE B
FEEDER SOURCE: CLECO

VOLTAGE: 208/120V, 600A 3Ø, 4W MLO W/ 600A MAIN
ENCLOSURE: SURFACE MOUNTED W/EQUIPMENT GND BAR
LOAD CENTER OR EQUAL

CKT. NO.	THRU SIZE	LOAD DESCRIPTION	BREAKER	LOAD (VA)	AMP	POLE	LOAD DESCRIPTION	BREAKER	LOAD (VA)	AMP	POLE	THRU SIZE	CKT. NO.
1		#12 OFFICE 1 LIGHTS	20	1	1200		#12 OFFICE 2 LIGHTS	20	1	1200		#12	2
3	#6	AHU #1 (INSIDE) 20 KW HEAT	60	3	20,000		#12 OFFICE 4 LIGHTS	20	1	960		#12	4
5		#12 OFFICE 5 LIGHTS	20	1	1200		SPACE						6
7		#12 OFFICES 6, 9 & OUTSIDE LIGHTS	20	1	1800		#12 OFFICES 7 & 10 LIGHTS	20	1	1800		#12	8
9	#6	AHU #2 (INSIDE) 20 KW HEAT	60	3	20,000		#12 LG. CONFERENCE ROOM LIGHTS	20	1	1600		#12	10
11		#12 MEN'S LIGHTS & RECEPTACLES	20	1	560		RECEPTION, SM. CONFERENCE ROOM AND BOTH CLOSET LIGHTS	20	1	1800		#12	12
13		SPACE	20	1			#12 WAITING ROOM LIGHTS	20	1	1200		#12	14
15	#6	AHU #3 (INSIDE) 20 KW HEAT	60	3	20,000		#12 OFFICE 16 LIGHTS	20	1	1200		#12	16
17		#12 HALL LIGHTS	20	1	1800		#12 WOMEN'S LIGHTS & RECEPTACLES	20	1	760		#12	18
19	#6	AHU #4 (INSIDE) 15 KW HEAT	70	2	15,000		#12 OFFICE 15 LIGHTS	20	1	800		#12	20
21		#12 OFFICE 14 LIGHTS	20	1	800		#12 OFFICES 12 & 13 LIGHTS	20	1	1600		#12	22
23		SPACE	20	1			#12 ALL EMERGENCY/EXIT LIGHTS	20	1	200		#12	24
25		#12 AHU #1 LIGHT	20	1	100		#12 AHU #2	20	1	100		#12	26
27		#12 AHU #3 LIGHT	20	1	100		#12 AHU #4	20	1	100		#12	28
29		#12 AHU #5 LIGHT	20	1	100		#12 HALL LIGHTS	20	1	1800		#12	30
31		#10 SM. WAREHOUSE LIGHTS	30	2	800		SPACE						32
33		SPACE	20	1			SPACE						34
35		SPACE	20	1			LG. WAREHOUSE LIGHTS	20	2	1200		#10	36
37	3/0	P-2 PANEL	225	3	12,200		SPACE						38
39		SPACE			11,860		SPACE						40
41		SPACE					WATER HEATER 20 GALLON	4.500	2	30		#10	42

TOTAL CONNECTED LOAD (VA)
AP=66,419 BP=68,109 CP=58,629

SOLID NEUTRAL NEUTRAL WIRE (W)
GROUND BUS GROUND WIRE (G)

PANEL: L-2
LOCATION: SUITE B
FEEDER SOURCE: MDP-2

VOLTAGE: 208/120V, 225A 3Ø, 4W MLO
ENCLOSURE: SURFACE MOUNTED W/EQUIPMENT GND BAR
LOAD CENTER OR EQUAL

CKT. NO.	THRU SIZE	LOAD DESCRIPTION	BREAKER	LOAD (VA)	AMP	POLE	LOAD DESCRIPTION	BREAKER	LOAD (VA)	AMP	POLE	THRU SIZE	CKT. NO.
1		#12 OFFICE 1 LIGHTS	20	1	1200		#12 OFFICE 2 LIGHTS	20	1	1200		#12	2
3		#12 OFFICE 3 LIGHTS	20	1	1200		#12 OFFICE 4 LIGHTS	20	1	960		#12	4
5		#12 OFFICE 5 LIGHTS	20	1	1200		SPACE						6
7		#12 OFFICES 6, 9 & OUTSIDE LIGHTS	20	1	1800		#12 OFFICES 7 & 10 LIGHTS	20	1	1800		#12	8
9		#12 OFFICES 8 & 11 LIGHTS	20	1	1600		LG. CONFERENCE ROOM LIGHTS	20	1	1200		#12	10
11		#12 MEN'S LIGHTS & RECEPTACLES	20	1	560		RECEPTION, SM. CONFERENCE ROOM AND BOTH CLOSET LIGHTS	20	1	1800		#12	12
13		SPACE	20	1			#12 WAITING ROOM LIGHTS	20	1	1200		#12	14
15		#12 WAITING ROOM LIGHTS	20	1	1200		#12 OFFICE 16 LIGHTS	20	1	1200		#12	16
17		#12 HALL LIGHTS	20	1	1800		#12 WOMEN'S LIGHTS & RECEPTACLES	20	1	760		#12	18
19		#12 KITCHEN LIGHTS	20	1	800		#12 OFFICE 15 LIGHTS	20	1	800		#12	20
21		#12 OFFICE 14 LIGHTS	20	1	800		#12 OFFICES 12 & 13 LIGHTS	20	1	1600		#12	22
23		SPACE	20	1			#12 ALL EMERGENCY/EXIT LIGHTS	20	1	200		#12	24
25		#12 AHU #1 LIGHT	20	1	100		#12 AHU #2	20	1	100		#12	26
27		#12 AHU #3 LIGHT	20	1	100		#12 AHU #4	20	1	100		#12	28
29		#12 AHU #5 LIGHT	20	1	100		#12 HALL LIGHTS	20	1	1800		#12	30
31		#10 SM. WAREHOUSE LIGHTS	30	2	800		SPACE						32
33		SPACE	20	1			SPACE						34
35		SPACE	20	1			LG. WAREHOUSE LIGHTS	20	2	1200		#10	36
37		SPACE	20	1			SPACE						38
39		SPACE					SPACE						40
41		SPACE					SPACE						42

TOTAL CONNECTED LOAD (VA)
AP=10,200 BP=10,200 CP=9,320

SOLID NEUTRAL NEUTRAL WIRE (W)
GROUND BUS GROUND WIRE (G)

PANEL: P-2
LOCATION: SUITE B
FEEDER SOURCE: MDP-2

VOLTAGE: 208/120V, 225A 3Ø, 4W MLO
ENCLOSURE: SURFACE MOUNTED W/EQUIPMENT GND BAR
LOAD CENTER OR EQUAL

CKT. NO.	THRU SIZE	LOAD DESCRIPTION	BREAKER	LOAD (VA)	AMP	POLE	LOAD DESCRIPTION	BREAKER	LOAD (VA)	AMP	POLE	THRU SIZE	CKT. NO.
1	#12	OFFICE 1 RECEPTACLES	20	1	1120		OFFICE 1 & WAITING AREA REC.	20	1	1120		#12	2
3	#12	OFFICE 2 RECEPTACLES	20	1	960		OFFICE 2 RECEPTACLES	20	1	960		#12	4
5	#12	OFFICE 3 RECEPTACLES	20	1	960		OFFICE 3 RECEPTACLES	20	1	960		#12	6
7		SPACE	20	1			OFFICE 4 RECEPTACLES	20	1	960		#12	8
9	#12	OFFICE 5 RECEPTACLES	20	1	960		OFFICE 5 RECEPTACLES	20	1	960		#12	10
11	#12	LG. WAREHOUSE RECEPTACLES	20	1	1120		HALL & COPY AREA RECEPTACLES	20	1	1120		#12	12
13	#12	OFFICE 6 RECEPTACLES	20	1	1120		OFFICE 7 RECEPTACLES	20	1	1120		#12	14
15	#12	OFFICE 8 RECEPTACLES	20	1	1120		LG. CONFERENCE ROOM REC.	20	1	1120		#12	16
17	#12	COPY MACHINE	20	1	1000		OUTSIDE RECEPTACLES	20	1	480		#12	18
19	#12	RECEPTION AREA RECEPTACLES	20	1	960		SM. CONFERENCE ROOM REC.	20	1	960		#12	20
21	#12	KITCHEN & COPY AREA RECEPT.	20	1	960		COPY MACHINE	20	1	1000		#12	22
23	#12	REFRIGERATOR	20	1	1500		SM. CONFERENCE ROOM REC.	20	1	960		#12	24
25	#12	OFFICE 9 RECEPTACLES	20	1	1120		OFFICE 10 RECEPTACLES	20	1	1120		#12	26
27	#12	OFFICE 11 RECEPTACLES	20	1	1120		HALL RECEPTACLES	20	1	800		#12	28
29	#12	SM. WAREHOUSE RECEPTACLES	20	1	1120		OFFICE 12 RECEPTACLES	20	1	1120		#12	30
31	#12	OFFICE 13 RECEPTACLES	20	1	1120		OFFICE 14 RECEPTACLES	20	1	1120		#12	32
33	#12	OFFICE 15 RECEPTACLES	20	1	1120		OFFICE 16 RECEPTACLES	20	1	1120		#12	34
35	#12	AHU #1 RECEPTACLE	20	1	160		AHU #2 RECEPTACLE	20	1	160		#12	36
37	#12	AHU #3 RECEPTACLE	20	1	160		AHU #4 RECEPTACLE	20	1	160		#12	38
39	#12	AHU #5 RECEPTACLE	20	1	160		SPACE						40
41		SPACE					OFFICE 4 RECEPTACLES	20	1	800		#12	42

TOTAL CONNECTED LOAD (VA)
AP=12,160 BP=12,200 CP=12,140

SOLID NEUTRAL NEUTRAL WIRE (W)
GROUND BUS GROUND WIRE (G)

REV:

SCALE: AS NOTED

JOB#: 1898

DATE: 10-8-07

SHEET 20

E-2

OF 25