

**DAMMON ENGINEERING, INC.**

EMMETT DAMMON

ARCHITECT  
ROBERT SOLLBERGER

1095 FLORIDA AVENUE  
SLIDELL, LA. 70458  
985-649-5832

WEBSITE:  
WWW.DAMMONENGINEERING.COM

EMAIL:  
DAMMONENG@BELLSOUTH.NET

ARCHITECTURE  
ENGINEERING  
STUDIES  
PLANNING  
INVESTIGATION  
EXPERT WITNESS

**NEW OFFICE BUILDING**

PLATFORM CRANE  
POWELL DRIVE  
SLIDELL, LA

**ELECTRICAL PLAN SUITE D**

REV:

SCALE: AS NOTED

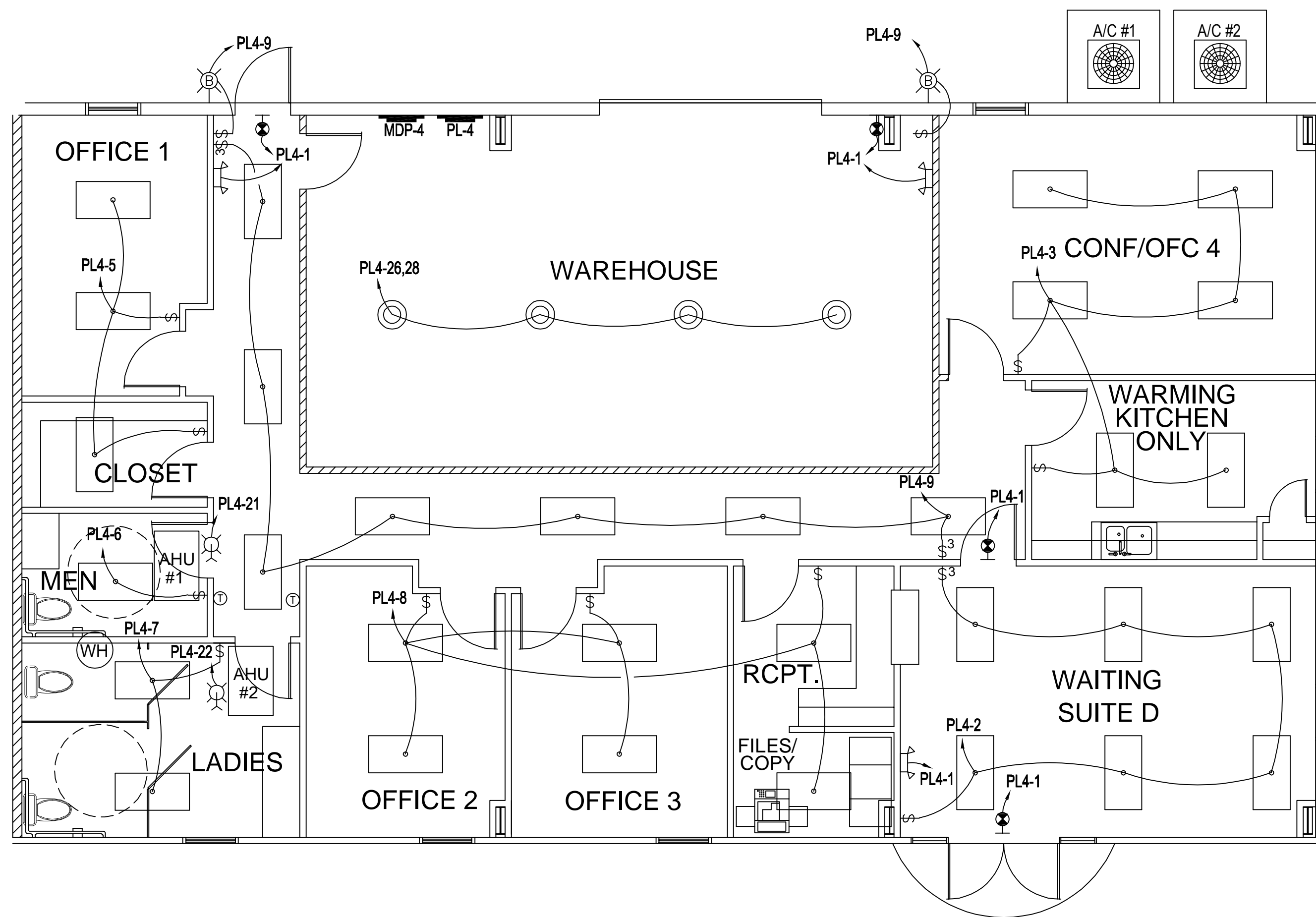
JOB#: 1898

DATE: 10-8-07

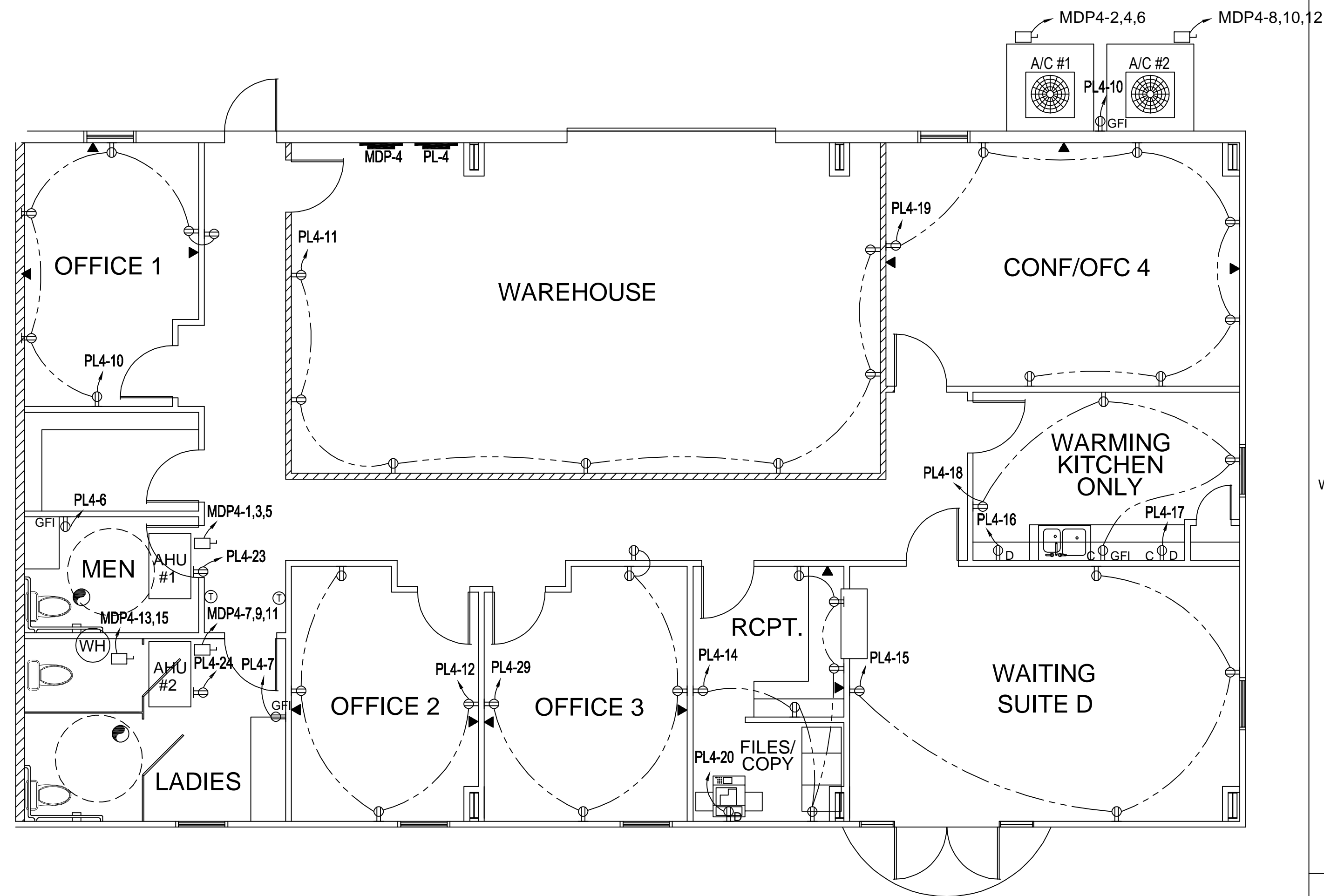
SHEET 22

**E-4**

OF 25



**LIGHTING PLAN SUITE D**  
SCALE: 3/16"=1'-0"



**POWER PLAN SUITE D**  
SCALE: 3/16"=1'-0"

FOR ELECTRICAL  
NOTES SEE E-5

**LEGEND**

- - 2'x4' RECESSED FLUORESCENT LAMP, STEEL HOUSING
- ⬇ - EMERGENCY LIGHT WITH 90 MIN. BATTERY BACKUP
- ⊕ - 120V, 20A DUPLEX RECEPTACLE
- ⊕GFI - 120V, GFI RECEPTACLE
- ⊕D - 120V, DEDICATED RECEPTACLE
- ⊕GFI - 120V, GFI RECEPTACLE AT COUNTER HEIGHT
- ⊞ - DISCONNECT
- ⬜ - POWER PANEL
- ⚡ - SWITCH
- ⚡ - 3-WAY SWITCH
- ⚡ - EXIT LIGHT, 90 MINUTE BATTERY BACK-UP
- ⊖ - THERMOSTAT
- ⊖ - HIGH BAY LIGHT
- ▶ - TELEPHONE / COMPUTER
- ⊖ - EXHAUST FAN
- ⊖ - 20 GAL WATER HEATER
- ⊖ - PULL STRING LIGHT
- ⊖ - EXTERIOR WATERPROOF WALL MOUNTED LIGHT W/ 90 MIN. BATTERY BACKUP

PANEL: MDP-4  
LOCATION: SUITE D  
FEEDER SOURCE: CLECO

VOLTAGE: 208/120V, 225A 3Ø, 4W MLO W/ 225A MAIN ENCLOSURE: SURFACE MOUNTED W/EQUIPMENT GND BAR LOAD CENTER OR EQUAL

CKT. NO.	THRN. WIRE SIZE	LOAD DESCRIPTION LOCATION	BREAKER AMP POLE	LOAD (VA)	⊕ ⊕ ⊕ (VA) (VA) (VA)	LOAD (VA)	BREAKER POLE AMP	LOAD DESCRIPTION LOCATION	THRN. WIRE SIZE	CKT. NO.	
1										2	
3	#6	AHU #1 (INSIDE) 20 KW HEAT	60 3	20,000		5,000	3 30	A/C #1 (OUTSIDE) 5 TONS	#10	4	
5										6	
7	#6	AHU #2 (INSIDE) 20 KW HEAT	60 3	20,000		5,000	3 30	A/C #2 (OUTSIDE) 5 TONS	#10	8	
9										10	
11										12	
13	#10	WATER HEATER 20 GALLONS	30 2	4,500			1 20	SPACE		14	
15							1 20	SPACE		16	
17							1 20	SPACE		18	
19							1 20	SPACE		20	
21							1 20	SPACE		22	
23							1 20	SPACE		24	
25							1 20	SPACE		26	
27							1 20	SPACE		28	
29							1 20	SPACE		30	
31							1 20	SPACE		32	
33							1 20	SPACE		34	
35							1 20	SPACE		36	
37										38	
39	3/0	PL-4 PANEL	225 3	8,640 6,500 6,280				SPARE		40	
41								SPARE		42	
				TOTAL CONNECTED LOAD (VA)							
				A#=25,356 B#=25,416 C#=22,946							
				SOLID NEUTRAL NEUTRAL WIRE (W)			GROUND BUS GROUND WIRE (G)				

PANEL: PL-4  
LOCATION: SUITE D  
FEEDER SOURCE: MDP-4

VOLTAGE: 208/120V, 225A 3Ø, 4W MLO ENCLOSURE: SURFACE MOUNTED W/EQUIPMENT GND BAR LOAD CENTER OR EQUAL

CKT. NO.	THRN. WIRE SIZE	LOAD DESCRIPTION LOCATION	BREAKER AMP POLE	LOAD (VA)	⊕ ⊕ ⊕ (VA) (VA) (VA)	LOAD (VA)	BREAKER POLE AMP	LOAD DESCRIPTION LOCATION	THRN. WIRE SIZE	CKT. NO.	
1	#12	EMERGENCY/EXIT LIGHTS	20 1	200		1200	1 20	WAITING ROOM LIGHTS	#12	2	
3	#12	CONF/OFF. 4 & KITCHEN LIGHTS	20 1	1200			1 20	SPACE		4	
5	#12	OFFICE 1 & CLOSET LIGHTS	20 1	600		360	3 20	MEN'S LIGHT AND RECEPTACLE	#12	6	
7	#12	WOMEN'S LIGHTS & RECEPTACLE	20 1	560		1200	1 20	OFFICES 2, 3 & 3 & RECEPTION AREA RECEPTABLES	#12	8	
9	#12	HALL & OUTSIDE LIGHTS	20 1	1600		960	1 20	OFFICE 1 RECEPTABLES	#12	10	
11	#12	WAREHOUSE RECEPTABLES	20 1	1120		640	1 20	OFFICE 2 RECEPTABLES	#12	12	
13		SPACE	20 1			960	1 20	RECEPTION AREA RECEPTABLES	#12	14	
15	#12	WAITING AREA RECEPTABLES	20 1	640		1500	1 20	REFRIGERATOR	#12	16	
17	#12	MICROWAVE	20 1	1800		640	1 20	KITCHEN RECEPTABLES	#12	18	
19	#12	CONF/OFFICE 4 RECEPTABLES	20 1	1120		1000	3 20	COPY MACHINE	#12	20	
21	#12	AHU #1 LIGHT	20 1	100		100	1 20	AHU #2 LIGHT	#12	22	
23	#12	AHU #1 RECEPTACLE	20 1	160		160	1 20	AHU #2 RECEPTACLE	#12	24	
25		SPACE	20 1			800	1 20	WAREHOUSE LIGHTS	#12	26	
27										28	
29	#12	OFFICE 3 RECEPTABLES	20 1	800			1 20	SPACE		30	
31							1 20	SPACE		32	
33							1 20	SPACE		34	
35							1 20	SPACE		36	
37								SPARE		38	
39								SPARE		40	
41								SPARE		42	
				TOTAL CONNECTED LOAD (VA)							
				A#=6,640 B#=6,500 C#=6,280							
				SOLID NEUTRAL NEUTRAL WIRE (W)			GROUND BUS GROUND WIRE (G)				