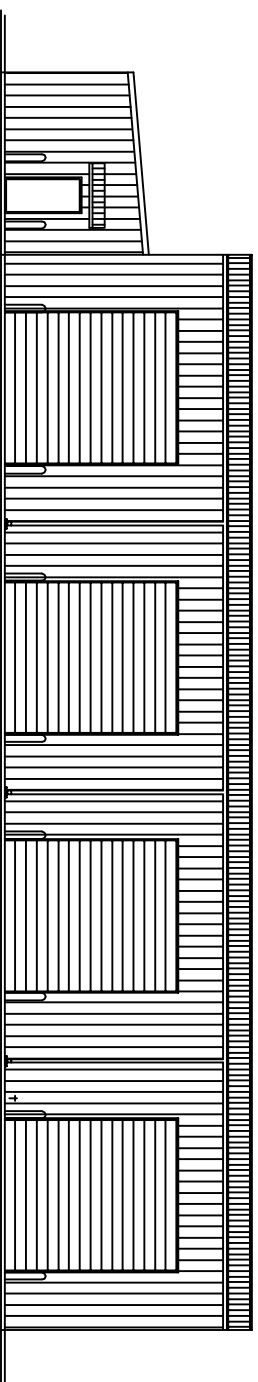


BAYOU TRUCK AND TRAILER 2528 OLD SPANISH TRAIL SLIDELL, LOUISIANA



ADDITIONAL WAREHOUSE

INTERNATIONAL BUILDING CODE 2006 REQUIREMENTS

OCCUPANCY CLASSIFICATION:
 STORAGE GROUP S-1:(SEC.311.2)
 WAREHOUSE 6053 SQ.FT.
 OFFICE 414 SQ.FT.
 TOTAL = 6467SQ.FT.

OCCUPANT LOAD: (TBL. 1004.1.2)
 WAREHOUSES = 800 GROSS SQ.FT.
 EQUALS 12 OCCUPANTS

EXIT ACCESS TRAVEL DISTANCE: (SEC. 1016.1)
 OCCUPANCY S-1, UNSPRINKLED SYSTEM = 200 FEET

CONSTRUCTION CLASSIFICATION: (SEC 602.5)
 TYPE V-B

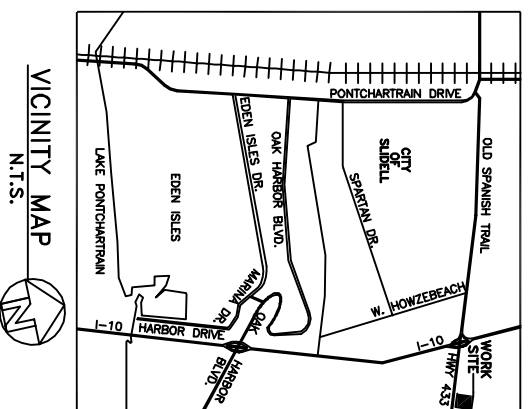
ALLOWABLE HEIGHT AND BLDG. AREA: (TBL. 503)
 ALLOWABLE=4,000 SQ.FT. 3 STORY

FIRE RESISTANCE RATING REQUIREMENTS FOR BLDG. ELEMENTS: (TBL. 601)
 STRUCTURAL FRAME=0 HRS.
 BEARING WALLS (EXTERIOR)=0 HRS.
 NON-BEARING WALLS=0 HRS.
 FLOOR CONSTRUCTION=0 HRS.
 ROOF CONSTRUCTION=0 HRS.

FIRE RESISTANCE RATING REQUIREMENTS FOR EXTERIOR WALLS: (TBL. 602)
 EXTERIOR WALLS WITH 30' FIRE SEPERATION DISTANCE=0 HRS.

MAX. AREA OF EXTERIOR WALL OPENINGS: (TBL. 704.8)
 BLDGS. WITH 30' FIRE SEPERATION DISTANCE ALLOWED UNLIMITED PROTECTED AND UNPROTECTED OPENINGS

CONSTRUCTION DOCUMENTS: (SEC. 1603)
 THIS BLDG. SHALL BE DESIGNED IN ACCORDANCE WITH IBC SECTION 1609 AS A PARTIALLY ENCLOSED BLDG. USING THE FOLLOWING INFORMATION:
 BASIC WIND SPEED (3 SECOND GUSTS)= 130 MPH (FIG. 1609)
 IMPORTANCE FACTOR: CATEGORY III BLDG., I =1.25, I =1.1, I =1.15 (TBL. 1604.5)
 EXPOSURE B, DETERMINATION OF WIND LOADS SHALL BE IN ACCORDANCE WITH IBC SEC. 1609.6 (SEC. 1609.4)
 MINIMUM LIVE LOADS SHALL BE DETERMINED IN ACCORDANCE WITH TBL. 1607.1
 GROUND SNOW LOADS= 5 PSF (FIG. 1608.2)
 BASED ON FEMA MAPS
 THIS PROPERTY IS IN A SPECIAL FLOOD HAZARD AREA.
 F.I.R.M. COMMUNITY MAP NO. 225205 0535 D, DATED 4/02/91
 FLOOD ZONE: A10; BASE FLOOD ELEVATION 9.0' MSL.



VICINITY MAP
N.T.S.

DWG#	DRAWING NAME
C-1	COPY OF SURVEY
C-2	DRAINAGE PLAN
C-3	SITE PLAN
S-1	FOUNDATION LAYOUT
A-1	FLOOR PLAN
A-2	ELEVATIONS
H-1	HANDICAP DETAILS
H-2	HANDICAP DETAILS
M-1	MECHANICAL PLAN
E-1	ELECTRICAL PLAN
P-1	PLUMBING PLAN

DAMMON ENGINEERING, INC.
 1095 FLORIDA AVENUE (985) 649-5832
 SLIDELL, LA. 70458
 DAMMONENGINEERING.COM

DATE: 3-14-07
 JOB NO. 1650

CHARLIE MAXWELL
 BAYOU TRUCK AND TRAILER
 2528 OLD SPANISH TRAIL
 SLIDELL, LOUISIANA