



DAMMON
ENGINEERING, INC.

EMMETT
DAMMON

ARCHITECT
ROBERT
WILTSE

1095 FLORIDA AVENUE
SLIDELL, LA. 70458
985-649-5832

WEBSITE:
WWW.DAMMONENGINEERING.COM

EMAIL:
DAMMONENG@BELLSOUTH.NET

ARCHITECTURE
ENGINEERING
STUDIES
PLANNING
INVESTIGATION
EXPERT WITNESS

**NEW OFFICE/
WAREHOUSE**

O'BRIEN / NORTH
SHORE FLOORING
J.F. SMITH AVE.
SLIDELL, LA

**BUILDING
SECTIONS**

REV:

SCALE: AS NOTED

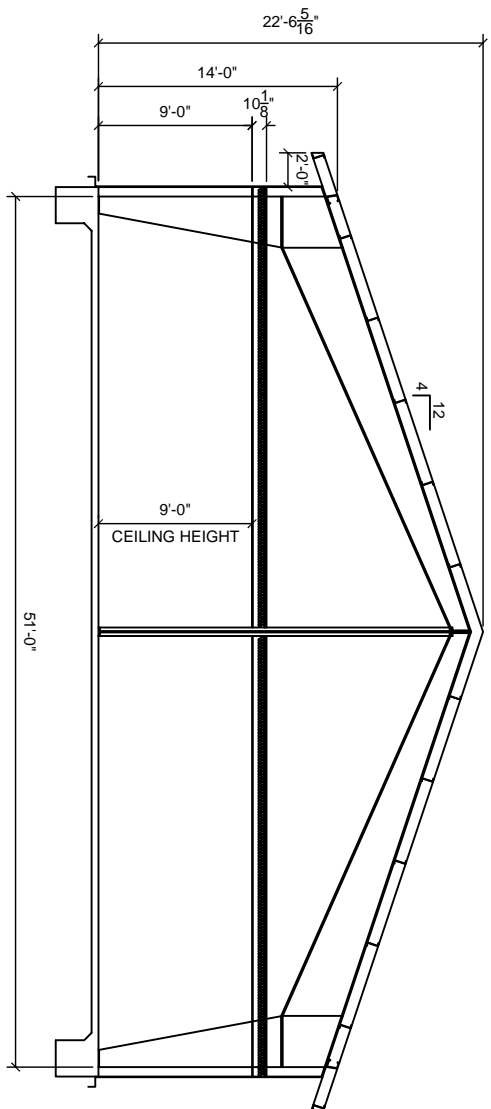
JOB#: 1912

DATE: 1-4-08

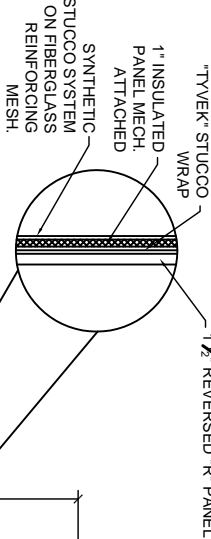
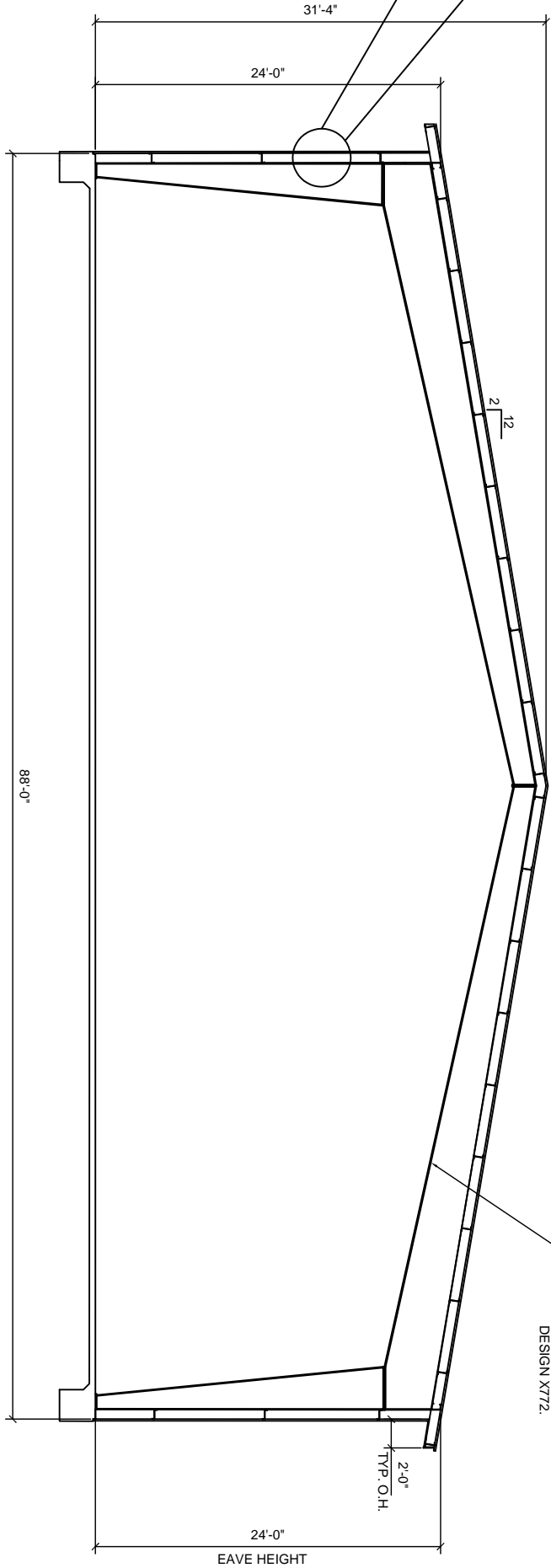
SHEET

A-4

OF



SECTION AA
SCALE: 3/16" = 1'-0"



NOTE: INSTALL ALL ABOVE NOTED MATERIALS IN STRICT ACCORDANCE WITH MANUFACTURER RECOMMENDATIONS. PROVIDE JOINTS, AND JOINT SEALANTS, INSTALLED AS RECOMMENDED BY SYSTEM MANUFACTURER SEE ELEVATIONS.

NOTE: PROVIDE W/ R. GRACE MONOKOTE MK-6 FIREPROOFING, OR EQUAL, ON RIGID FRAME COLUMNS, RIGID FRAME BEAMS, GIRTS, AND PURLINS THROUGHOUT WAREHOUSE FIRE AREA, TO ACHIEVE ONE HOUR FIRE PROTECTION. MONOKOTE THICKNESS TO BE NOMINAL ONE INCH; A REDUCTION IN THICKNESS MAY BE DETERMINED BY THE MFG. AS APPROPRIATE UPON REVIEW OF STEEL SECTIONS SELECTED. INSTALL IN STRICT ACCORDANCE WITH MFG. RECOMMENDATIONS AND UL DESIGN X772.

SECTION BB
SCALE: 3/16" = 1'-0"

**NOT APPROVED
FOR CONSTRUCTION**