



**DAMMON ENGINEERING, INC.**  
**EMMETT DAMMON**

**ARCHITECT**  
**ROBERT WILTSE**

1095 FLORIDA AVENUE  
 SLIDELL, LA. 70458  
 983-649-5832

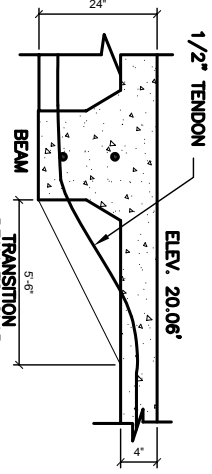
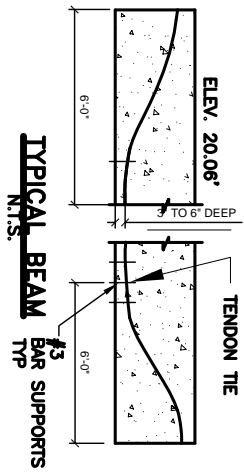
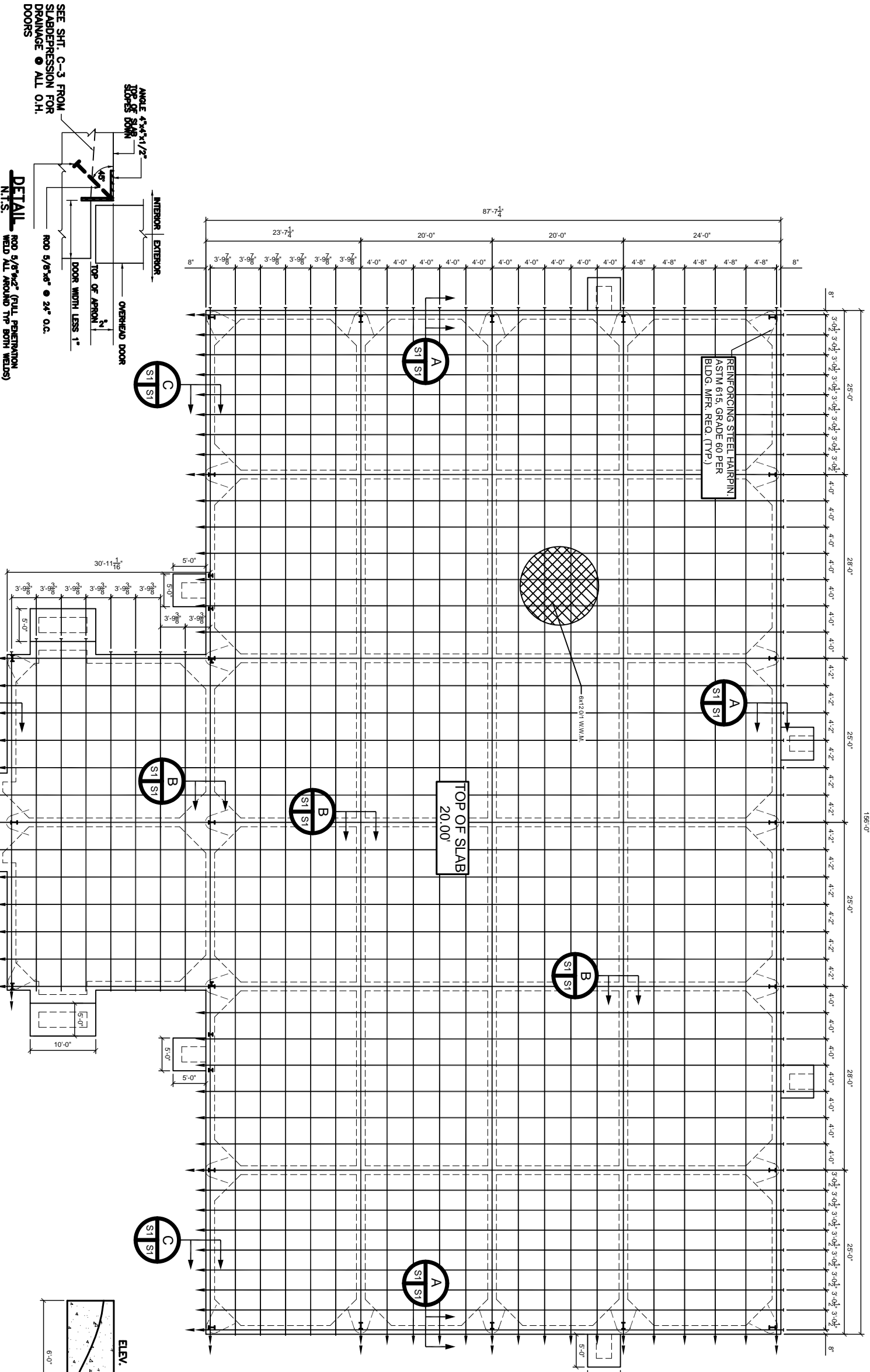
WEBSITE:  
 WWW.DAMMONENGINEERING.COM  
 EMAIL:  
 DAMMONENG@BELLSOUTH.NET

ARCHITECTURE  
 ENGINEERING  
 STUDIES  
 PLANNING  
 INVESTIGATION  
 EXPERT WITNESS

**NEW OFFICE/  
 WAREHOUSE**

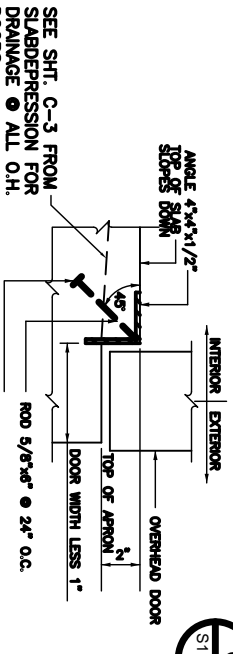
O'BRIEN / NORTH  
 SHORE FLOORING  
 DISTRIBUTORS  
 J.F. SMITH AVE.  
 SLIDELL, LA

**FOUNDATION  
 PLAN**

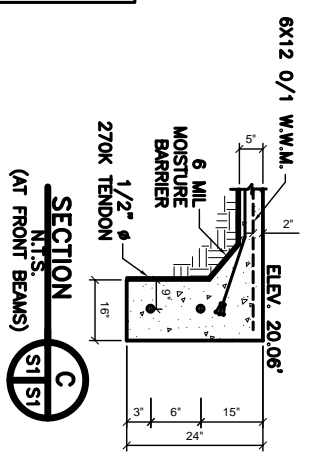
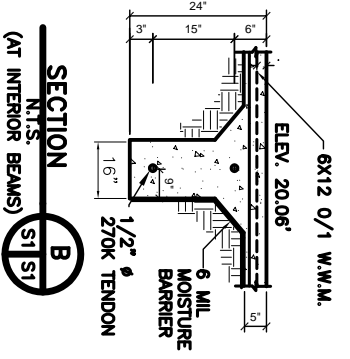
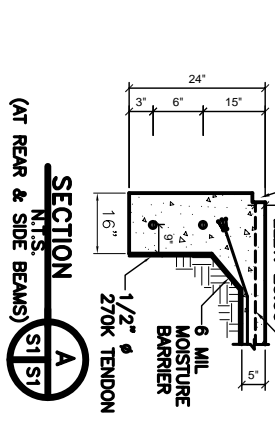


**NOT APPROVED  
 FOR CONSTRUCTION**

**DETAIL**  
 ROD 5/8" @ 24" O.C. (FULL PENETRATION WELD ALL AROUND TYP BOTH WEBS)  
 N.T.S.  
 TYP AT ALL OVERHEAD DOORS



2X2 NOTCH FOR PANEL WALLS  
 ELEV. 20.06'  
 6X12 O/1 W.W.M.



REV:	
SCALE:	AS NOTED
JOB#:	1912
DATE:	1-4-08
SHEET	
OF	<b>S-1</b>