

**DAMMON ENGINEERING, INC.**

CHIEF ENGINEER  
EMMETT DAMMON, P.E.

CHIEF ARCHITECT  
ROBERT WILTSE

1 095 FLORIDA AVENUE  
SLIDELL, LA. 70458  
OFFICE: 985-649-5832  
FAX: 985-641-5950

WEBSITE:  
WWW.DAMMONENGINEERING.COM

EMAIL:  
DAMMONENG@BELLSOUTH.NET

- ARCHITECTURE
- ENGINEERING
- STUDIES
- PLANNING
- INVESTIGATION
- EXPERT WITNESS

**OFFICE RENOVATION/ ADDITION**

M NATAL CONTRACTORS, INC.  
394 VOTERS ROAD  
SLIDELL, LA.

**SITE PLAN**

REV: 8-1-08

SCALE: AS NOTED

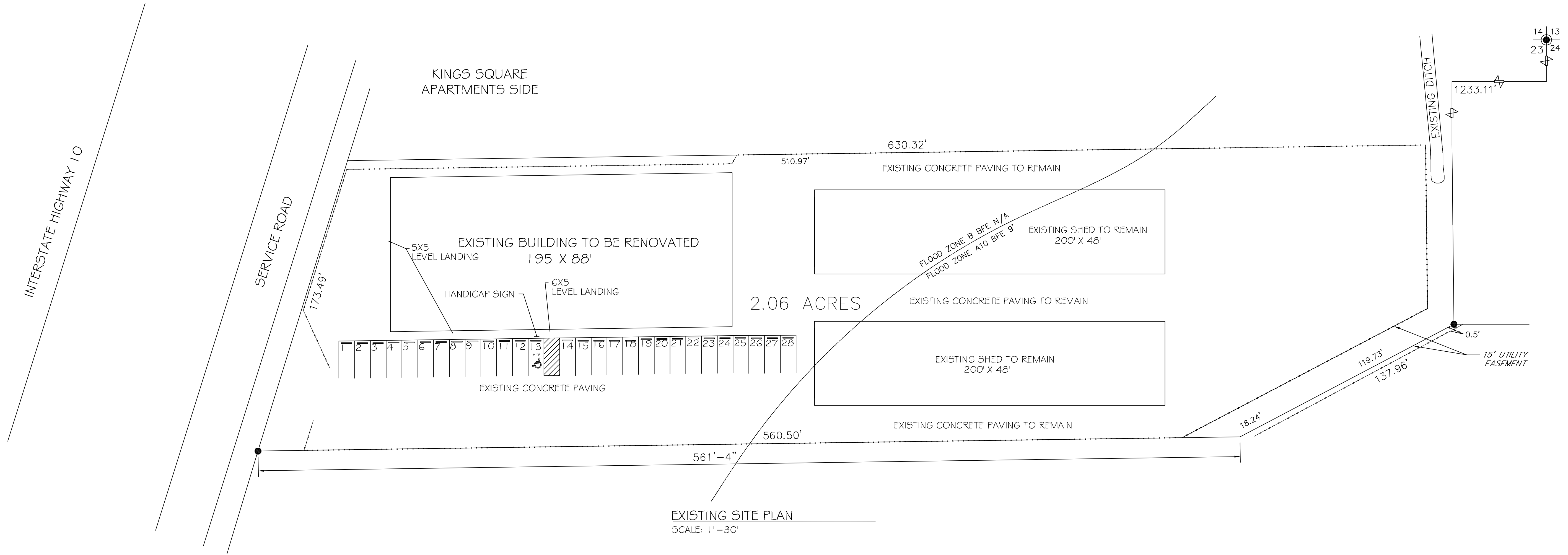
JOB#: 1956

DATE: 07-16-08

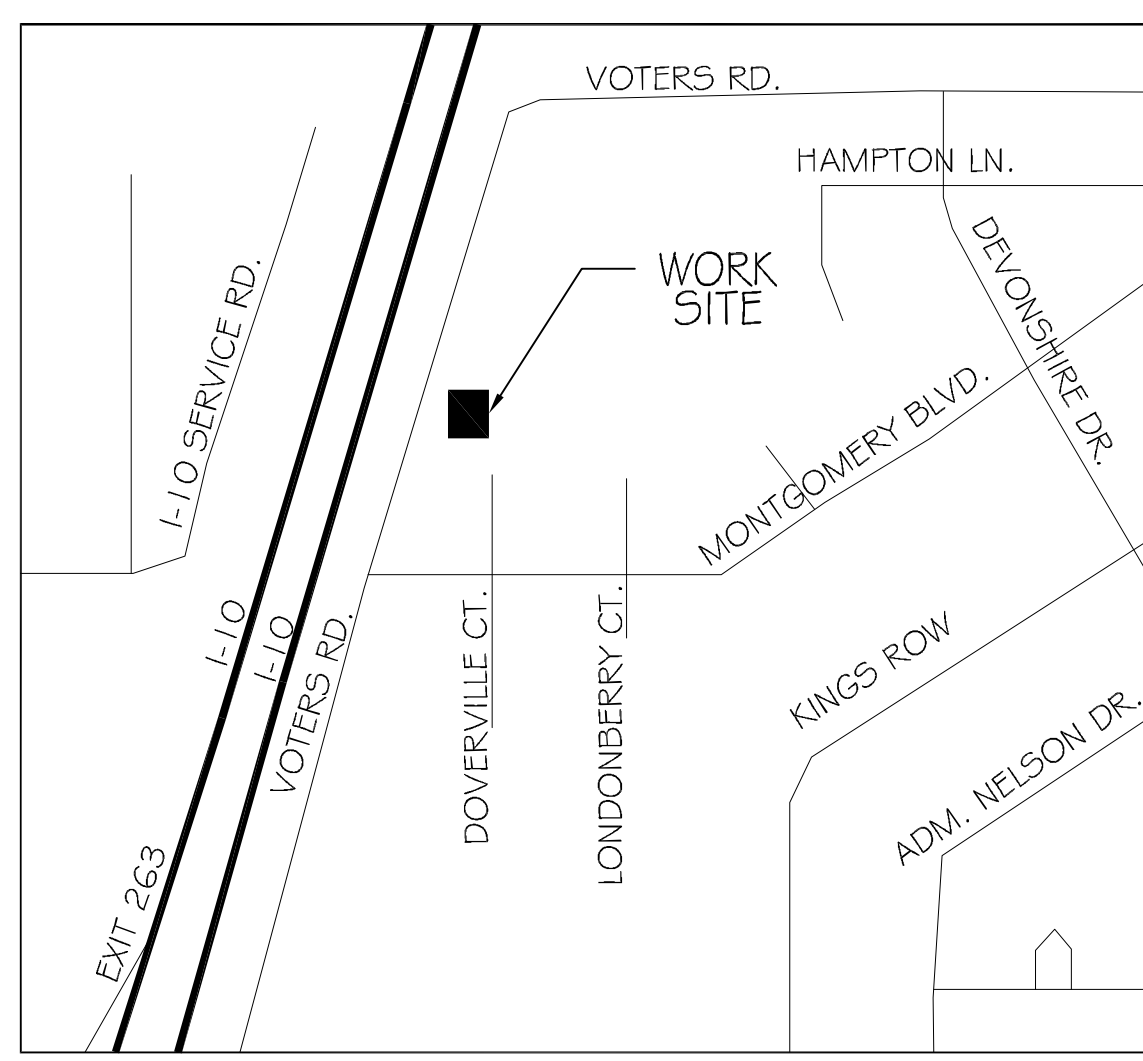
SHEET 2

**C-1**

OF 12



EXISTING SITE PLAN  
SCALE: 1"=30'



VICINITY MAP  
N.T.S.