

DAMMON
ENGINEERING, INC.

CHIEF ENGINEER
EMMETT
DAMMON, P.E.
CHIEF ARCHITECT
ROBERT
WILTSE

1095 FLORIDA AVENUE
SLIDELL, LA 70458
OFFICE: 985-649-5832
FAX: 985-641-5950

WEBSITE:
WWW.DAMMONENGINEERING.COM
EMAIL:
DAMMONENG@BELL.SOUTH.NET

ARCHITECTURE
ENGINEERING
STUDIES
PLANNING
INVESTIGATION
EXPERT WITNESS

NEW OFFICE/
WAREHOUSE

ROSS & MIKE GUASTELLA
TAOS STREET
SLIDELL, LA

BUILDING
ELEVATIONS

REV:

SCALE: AS NOTED

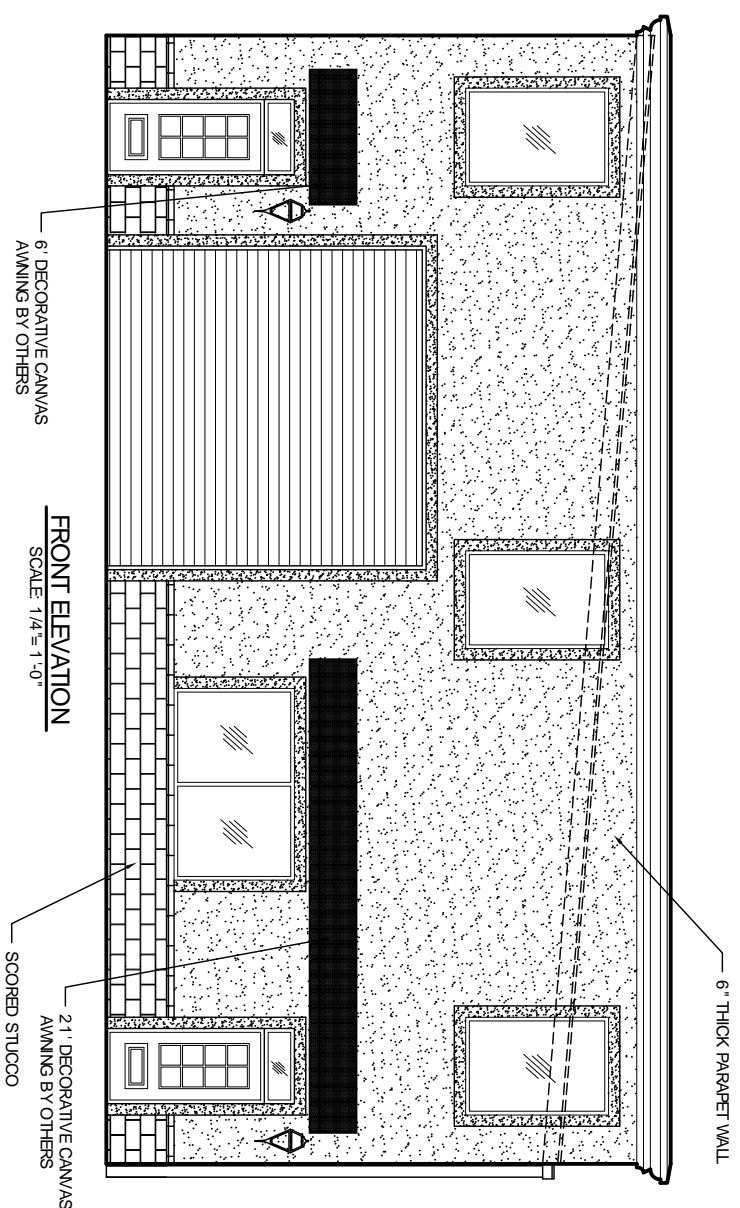
JOB#: 1572

DATE: 5-9-08

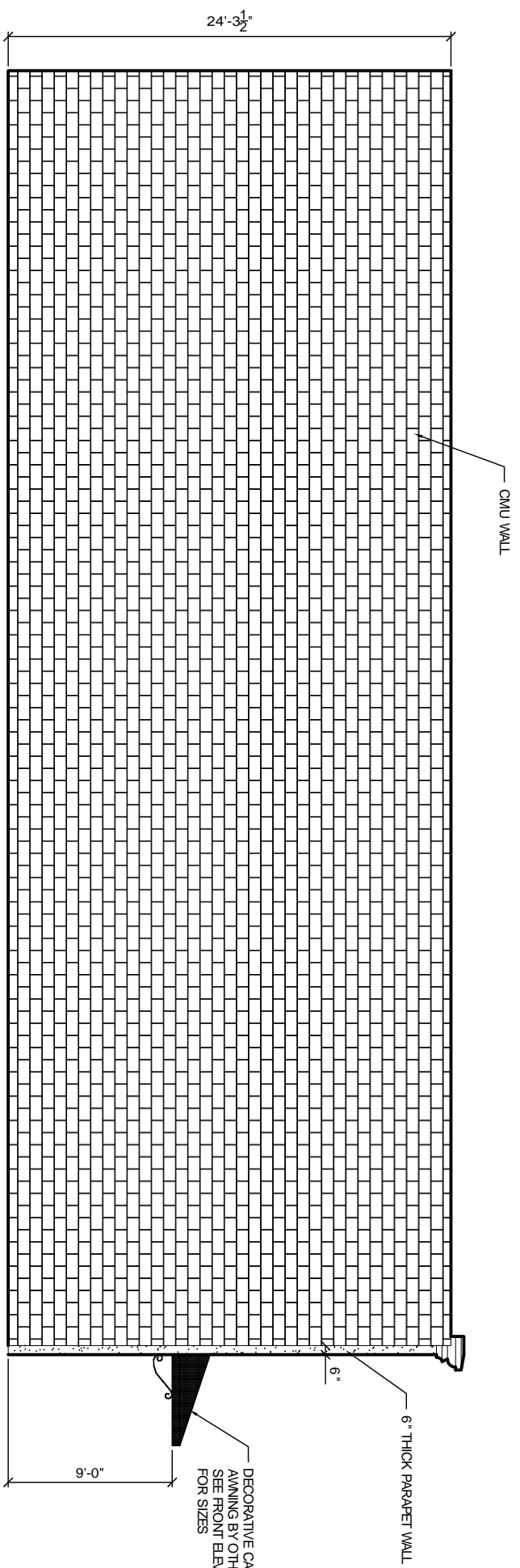
SHEET

A-3

OF



FRONT ELEVATION
SCALE: 1/4" = 1'-0"



LEFT ELEVATION
SCALE: 1/4" = 1'-0"

- EXTERIOR STUCCO SPECIFICATIONS:**
1. COMPLY WITH ASTM C-841 AND C-842. PROVIDE 3/4" OVERALL THICKNESS ON SELF-FURRING DIAMOND MESH GALVANIZED METAL LATH, 3.4 LB. PER SQUARE YARD, ON "TWICE" STUCCO WRAP, ATTACH LATH AT "DIMPLES" ONLY, WITH NON-CORROSIVE SCREWS.
 2. METAL LATH AND ALL ACCESSORIES TO BE EQUAL TO "MICO", TO INCLUDE CORNER BEADS, CASING BEADS, BASE SCREENS AND CONTROL JOINTS. ALL INSTALLED WITH NON-CORROSIVE SCREWS. ALL ACCESSORIES TO BE ZINC. ALL CORNERS TO BE MITERED.
 3. STUCCO TO BE INSTALLED IN THREE COATS: SCRATCH, BROWN AND FINISH. FINISH COAT TO BE ORIENTAL STUCCO WITH SAND FLOAT FINISH BY U.S. GYPSUM.
 4. COMPLY WITH MANUFACTURERS AND INDUSTRY RECOMMENDATIONS. INSTALL LATH IN ACCORDANCE WITH ASTM C-11063.
 5. SUBMIT DATA / CUT SHEETS FOR ALL ITEMS IF REQUIRED.