

DAMMON
ENGINEERING, INC.

CHIEF ENGINEER
EMMETT
DAMMON, P.E.

CHIEF ARCHITECT
ROBERT
WILTSE

1095 FLORIDA AVENUE
SLIDELL, LA. 70458
OFFICE: 985-649-5632
FAX: 985-641-5950

WEBSITE:
WWW.DAMMONENGINEERING.COM
EMAIL:
DAMMONENG@BELLOUTH.NET

ARCHITECTURE
ENGINEERING
STUDIES
PLANNING
INVESTIGATION
EXPERT WITNESS

**NEW OFFICE/
WAREHOUSE**

GUASTELLA CONSTRUCTION
LOT #10 TAOS STREET
SLIDELL, LA 70458

**CROSS
SECTION**

REV:

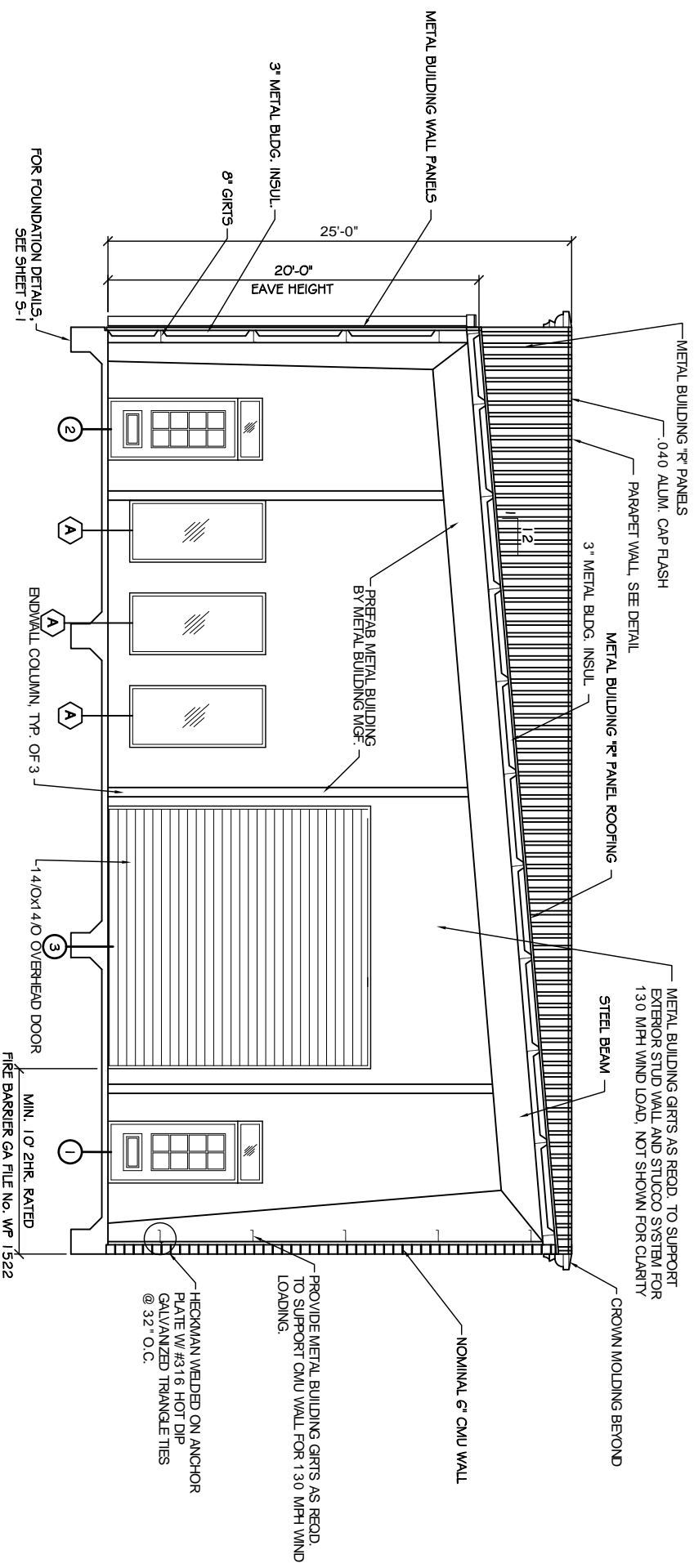
SCALE: AS NOTED

JOB#: 1572

DATE: 6-20-08

SHEET 10

A-2



CROSS SECTION
SCALE: 1/4" = 1'-0"
A
A1 A2