

DAMMON
ENGINEERING, INC.

CHIEF ENGINEER
EMMETT
DAMMON, P.E.
CHIEF ARCHITECT
ROBERT
WILTSE

1095 FLORIDA AVENUE
SUDELL, LA. 70458
OFFICE: 985-649-5832
FAX: 985-641-5950

WEBSITE:
WWW.DAMMONENGINEERING.COM
EMAIL:
DAMMONENG@BELL SOUTH.NET

ARCHITECTURE
ENGINEERING
STUDIES
PLANNING
INVESTIGATION
EXPERT WITNESS

**NEW OFFICE/
WAREHOUSE**

GUASTELLA CONSTRUCTION
LOT #10 TAOS STREET
SUDELL, LA 70458

**PRELIMINARY
ELEVATIONS**

REV:

SCALE: AS NOTED

JOB#: 1572

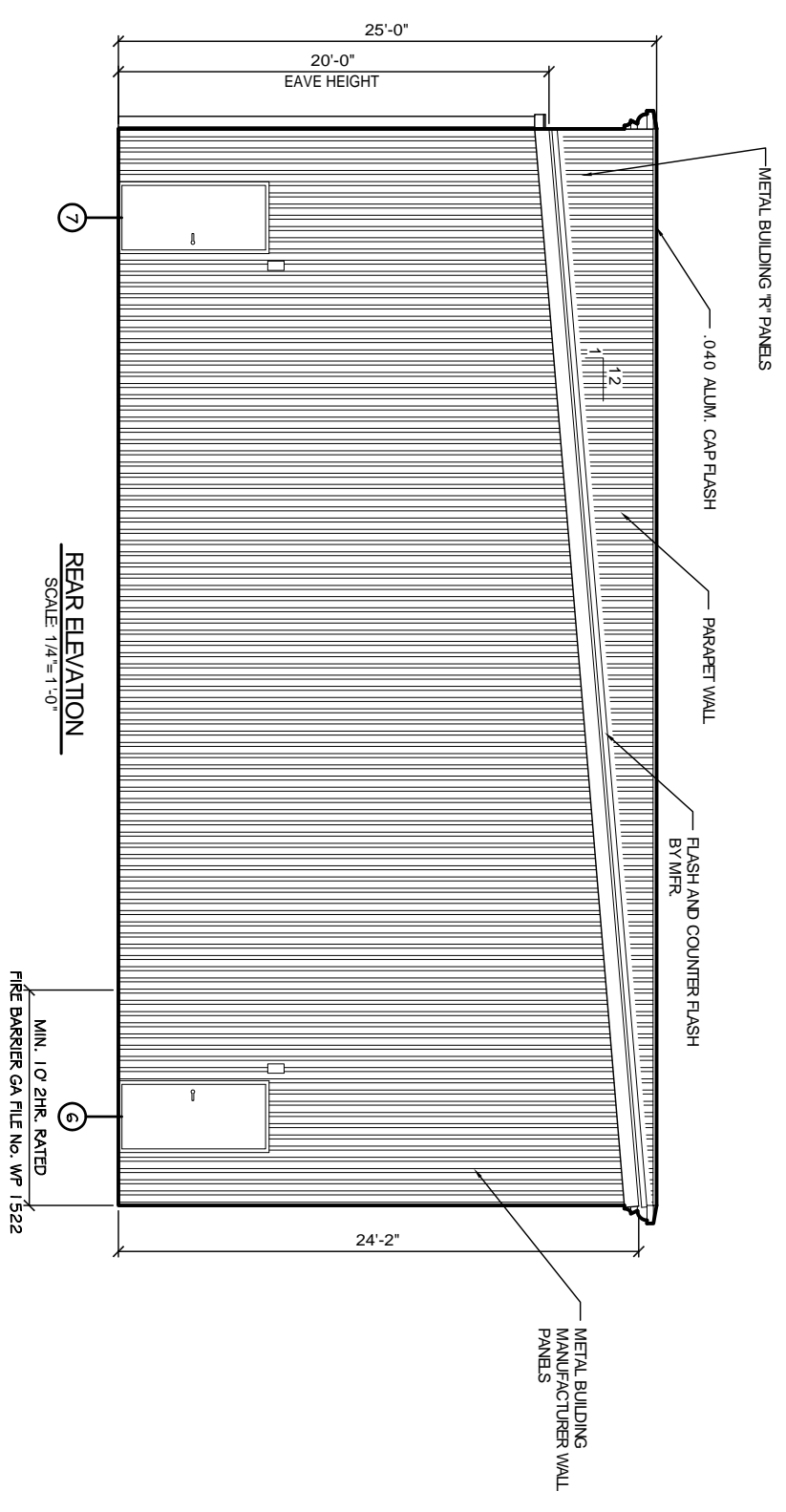
DATE: 6-20-08

SHEET 12

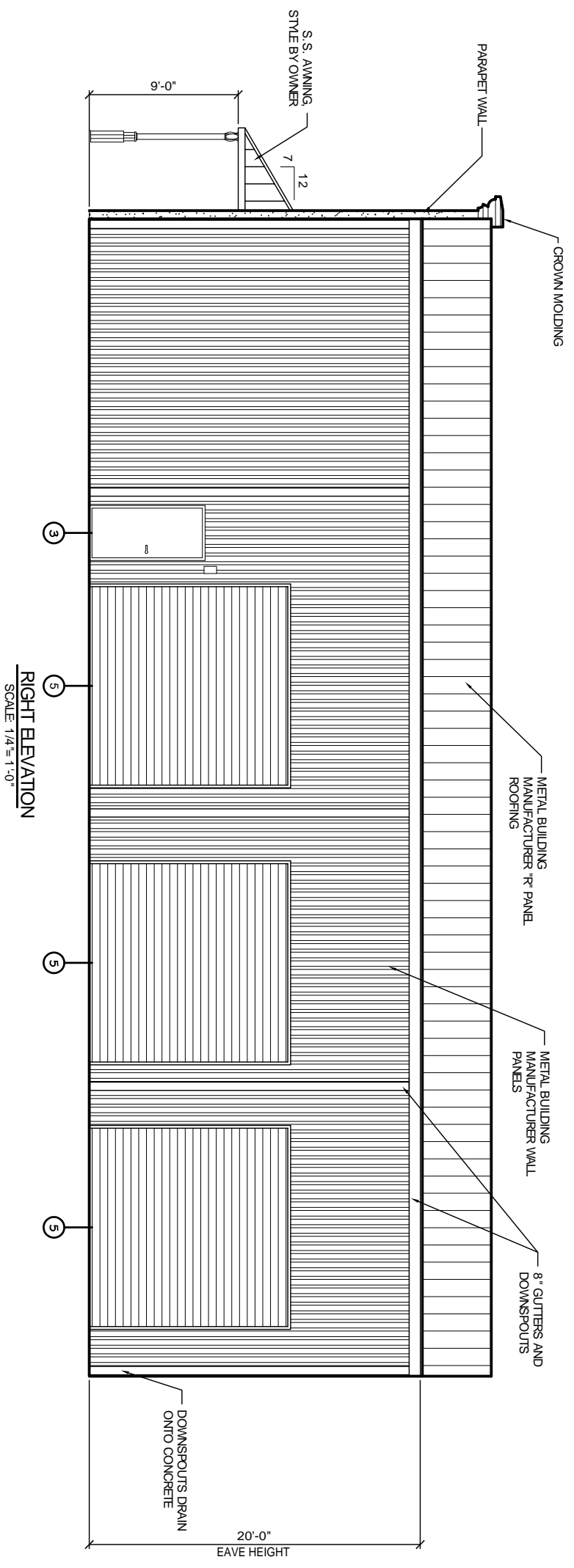
A-4

F.M. REV. DATE: 8-26-08

OF 17



REAR ELEVATION
SCALE: 1/4" = 1'-0"



RIGHT ELEVATION
SCALE: 1/4" = 1'-0"