

**DAMMON**  
ENGINEERING, INC.

CHIEF ENGINEER  
EMMETT  
DAMMON, P.E.  
CHIEF ARCHITECT  
ROBERT  
WILTSE

1095 FLORIDA AVENUE  
SUDELL, LA. 70458  
OFFICE: 985-649-5832  
FAX: 985-641-3950

WEBSITE:  
WWW.DAMMONENGINEERING.COM  
EMAIL:  
DAMMONING@Bellsouth.net

ARCHITECTURE  
ENGINEERING  
STUDIES  
PLANNING  
INVESTIGATION  
EXPERT WITNESS

**NEW OFFICE/  
WAREHOUSE**

GUASTELLA CONSTRUCTION  
LOT #10 TAOS STREET  
SUDELL, LA 70458

**CROSS  
SECTION**

REV:

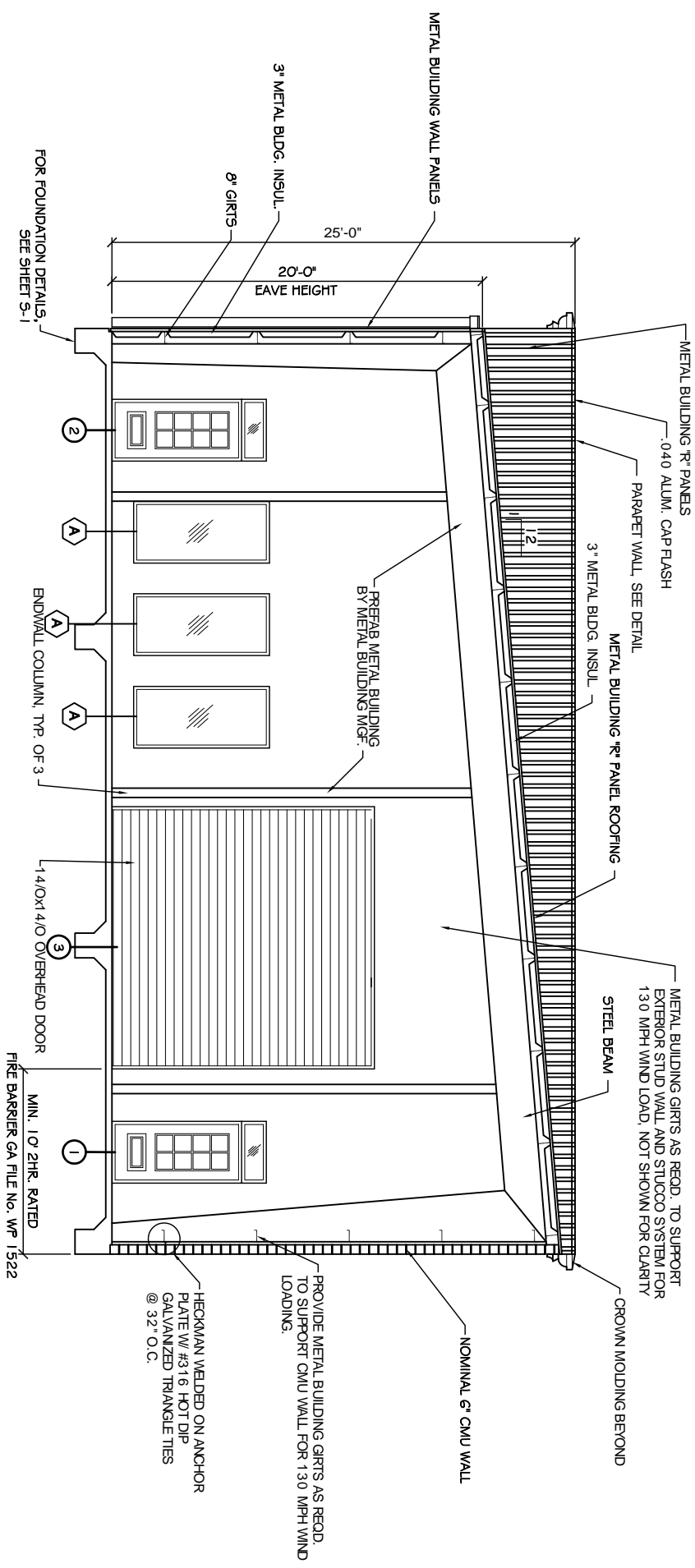
SCALE AS NOTED

JOB#: 1572

DATE: 6-20-08

SHEET 10

**A-2**



**CROSS SECTION A**  
SCALE 1/4" = 1'-0"