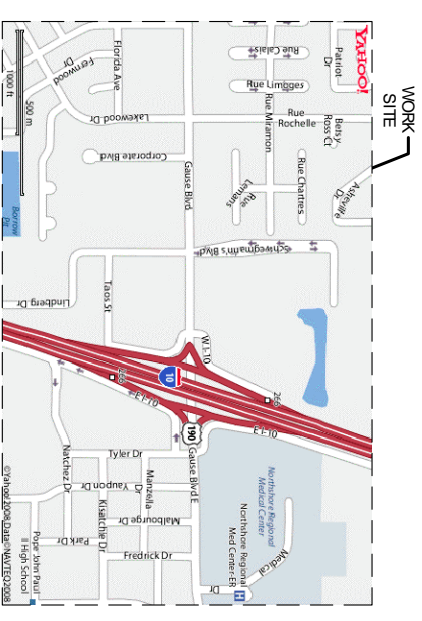


HANDICAP PARKING SIGN
N. T. S.

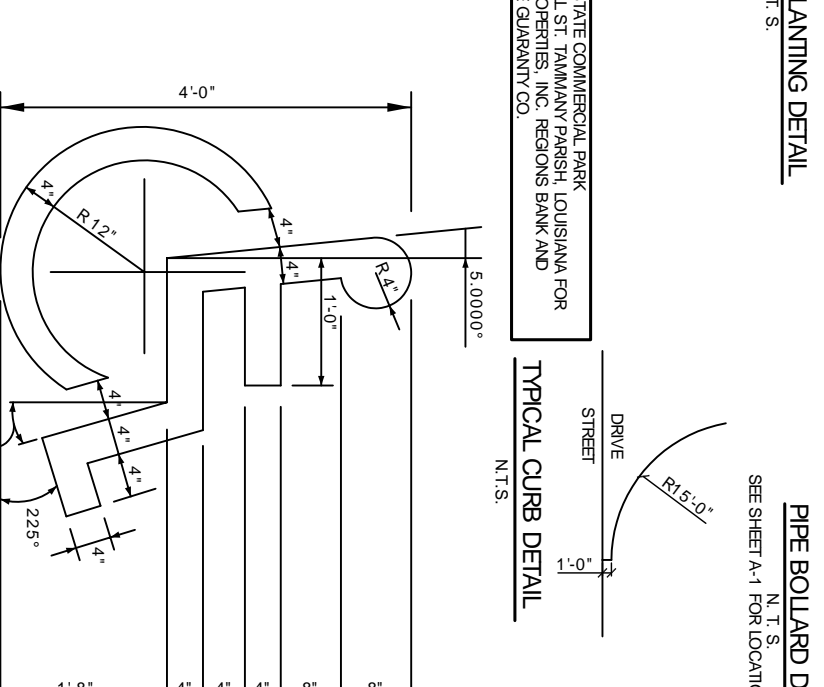
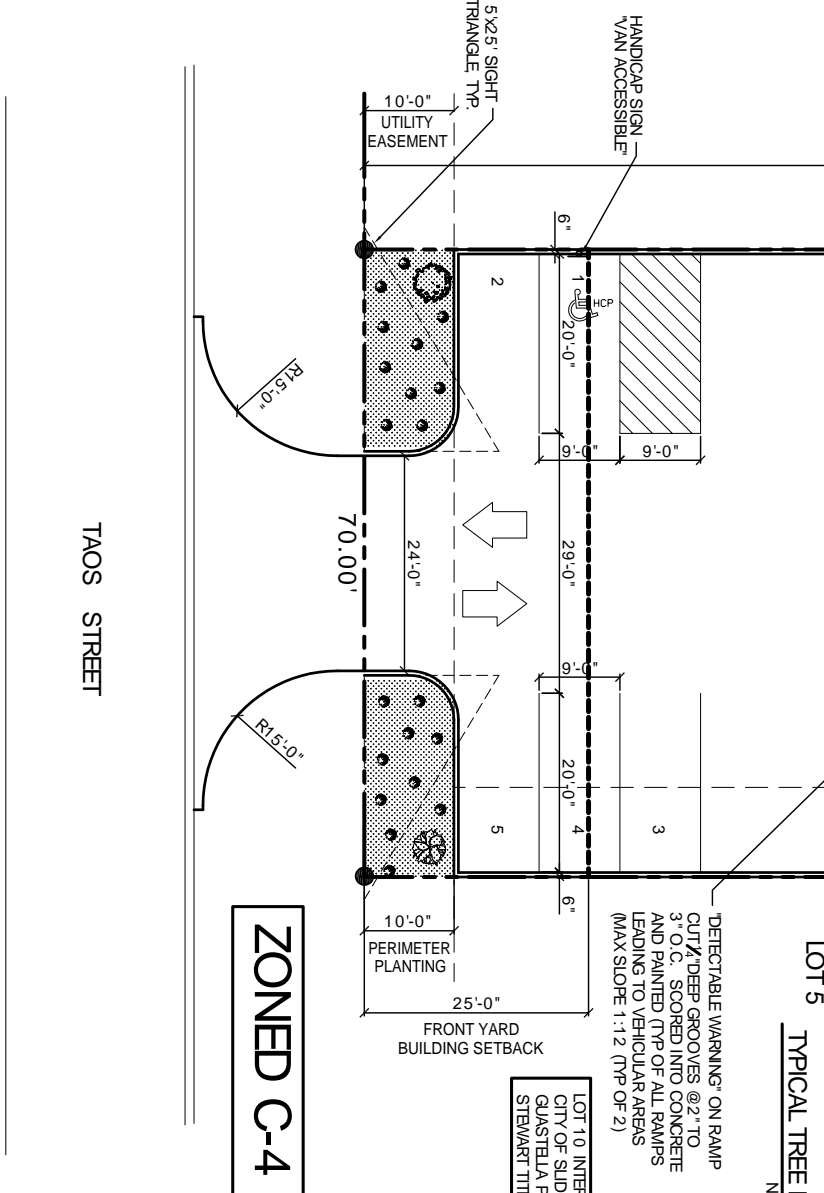
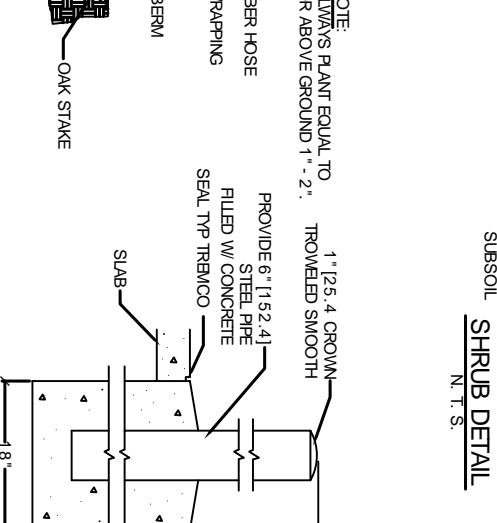
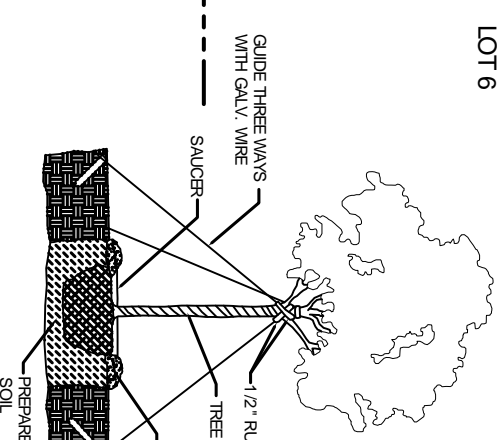
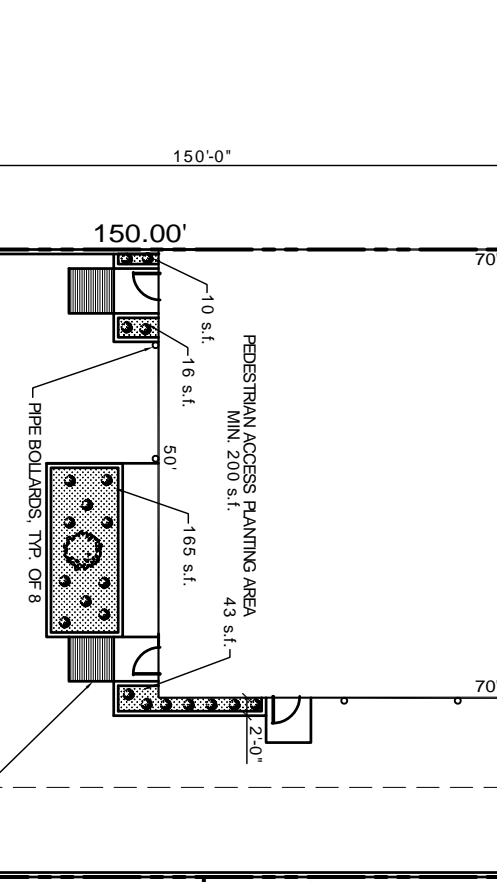
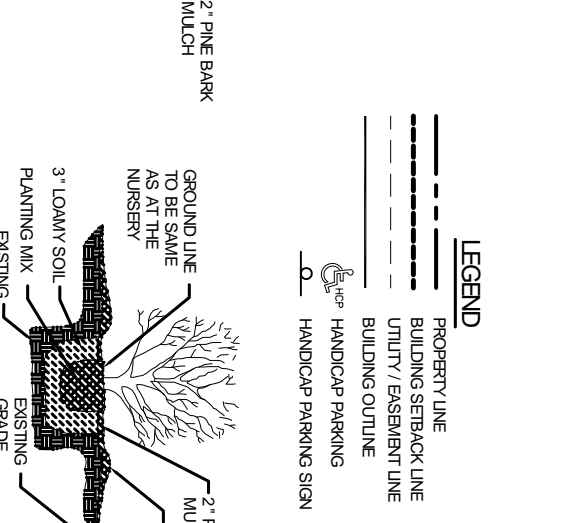
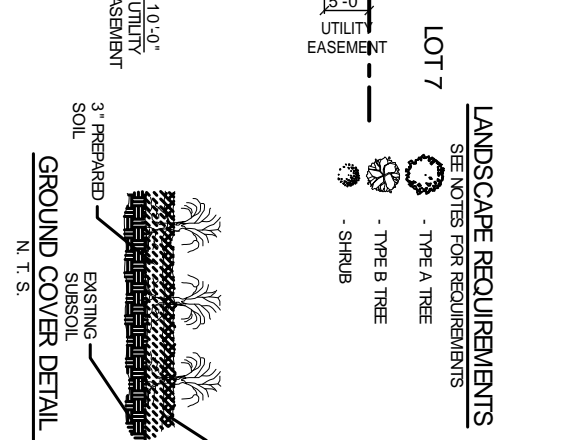
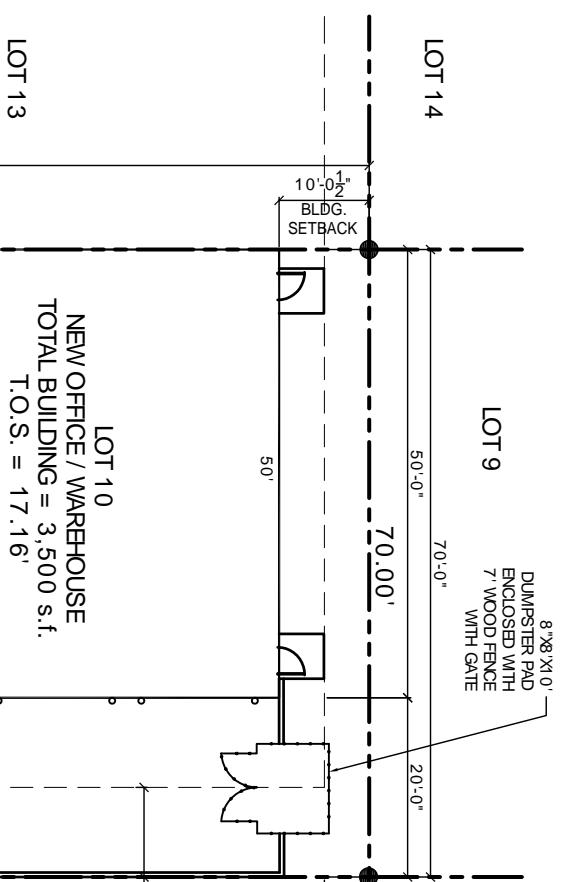
SITE LIGHTING
EXTERIOR LIGHTING SHALL BE SHADED OR INWARDLY DIRECTED IN SUCH A MANNER SO THAT NO DIRECT LIGHTING OR GLARE BE CAST BEYOND THE PROPERTY LINE. THE INTENSITY OF SUCH LIGHTING SHALL NOT EXCEED ONE FOOT CANDLE AS MEASURED AT THE ADJUTING PROPERTY LINE (N/A FOR THIS PARTICULAR JOB)

APPLICABLE CODE	IBC 2006
DESIGN WIND SPEED-	130 MPH
DESIGN SLAB ELEVATIONS-	16.12'
PARKING REQUIREMENTS-	OFFICE SPACE OCCUPANCY PROVIDE ONE SPACE FOR EVERY 300 s.f.
	WAREHOUSE OCCUPANCY PROVIDE ONE SPACE FOR EACH FIVE EMPLOYEES
PARKING SPACES REQUIRED =	2,450 s.f. WAREHOUSE SPACE = 2 SPACES
PARKING SPACES PROVIDED =	5 (INCLUDING 1 HANDICAP PARKING SPACE)

LANDSCAPE REQUIREMENTS:
PERIMETER PLANTING AREA - A PERIMETER PLANTING AREA AT LEAST TEN (10) FEET IN WIDTH MUST BE PROVIDED OFF THE PUBLIC RIGHT-OF-WAY BETWEEN THE RIGHT-OF-WAY AND PARKING AREA OR STRUCTURES. PLANTING MATERIALS SHOULD ACHIEVE A BALANCE OF LOW-LYING HORIZONTAL SHRUBBERY AND VERTICAL TREES. TREES SHALL BE PLACED NO MORE THAN 20'-25' FEET ON CENTER WITH A COMPLIMENT OF NO LESS THAN 10 SHRUBS PER TREE.
PARKING LOT PLANTING - PARKING LOT INTERIORS SHOULD BE DESIGNED TO PROVIDE AT LEAST ONE (1) TREE FOR EVERY TWO (2) PARKING SPACES. EACH TREE SHOULD BE LOCATED IN A LANDSCAPED ISLAND OF AT LEAST 200 s.f. TREES MUST BE DISTRIBUTED UNIFORMLY SO AS TO PROVIDE A CANOPY EFFECT.
PEDESTRIAN ACCESS PLANTING - LANDSCAPED AREAS MUST BE PROVIDED BETWEEN THE BUILDING FACES HAVING ACCESS AND THE PARKING LOT. FOUR (4) s.f. OF LANDSCAPED AREA SHOULD BE PROVIDED FOR EVERY LINEAR FOOT OF BUILDING FACE. NO PLANTING AREA SHOULD BE LESS THAN FIVE (5) FEET WIDE AND PLANTING MATERIALS SHOULD ACHIEVE A BALANCE BETWEEN LOW-LYING SHRUBBERY AND VERTICAL TREES.

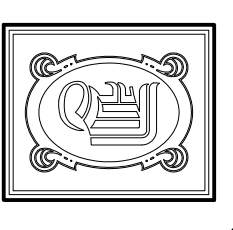


VICINITY MAP
N.T.S.



SITE PLAN
SCALE 1" = 10'-0"

F.M. REV. DATE: 8-26-08



DAMMON ENGINEERING, INC.
CHIEF ENGINEER
EMMETT DAMMON, P.E.
CHIEF ARCHITECT
ROBERT WILTSE

1095 FLORIDA AVENUE
SUDELL, LA. 70458
OFFICE: 985-649-5832
FAX: 985-641-5950
WWW.DAMMONENGINEERING.COM

ARCHITECTURE
ENGINEERING
STUDIES
PLANNING
INVESTIGATION
EXPERT WITNESS

NEW OFFICE / WAREHOUSE

GUASTELLA CONSTRUCTION
LOT #10 TAOS STREET
SUDELL, LA 70458

SITE PLAN

REV:	
SCALE AS NOTED	
JOB#: 1572	
DATE: 6-20-08	
SHEET 3	
C-2	
OF 17	