

DAMMON ENGINEERING, INC.

CHIEF ENGINEER
EMMETT DAMMON, P.E.

CHIEF ARCHITECT
ROBERT WILTSE

1095 FLORIDA AVENUE
SLIDELL, LA. 70458
OFFICE: 985-643-5832
FAX: 985-641-5950

WWW.DAMMONENGINEERING.COM
EMAIL: DAMMONENG@BLSOUTH.NET

ARCHITECTURE
ENGINEERING
STUDIES
PLANNING
INVESTIGATION
EXPERT WITNESS

**NEW OFFICE/
WAREHOUSE**

GUASTELLA CONSTRUCTION
LOT #10 TAOS STREET
SLIDELL, LA 70458

**PAVING
PLAN**

REV:	
SCALE:	AS NOTED
JOB#:	1572
DATE:	6-20-08
SHEET:	4

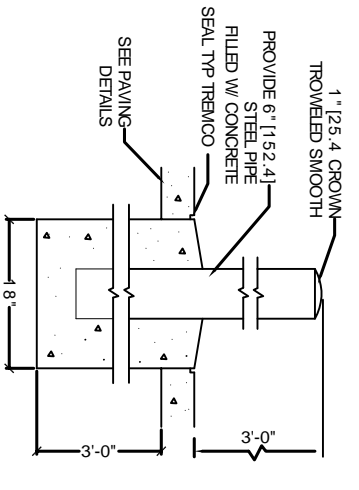
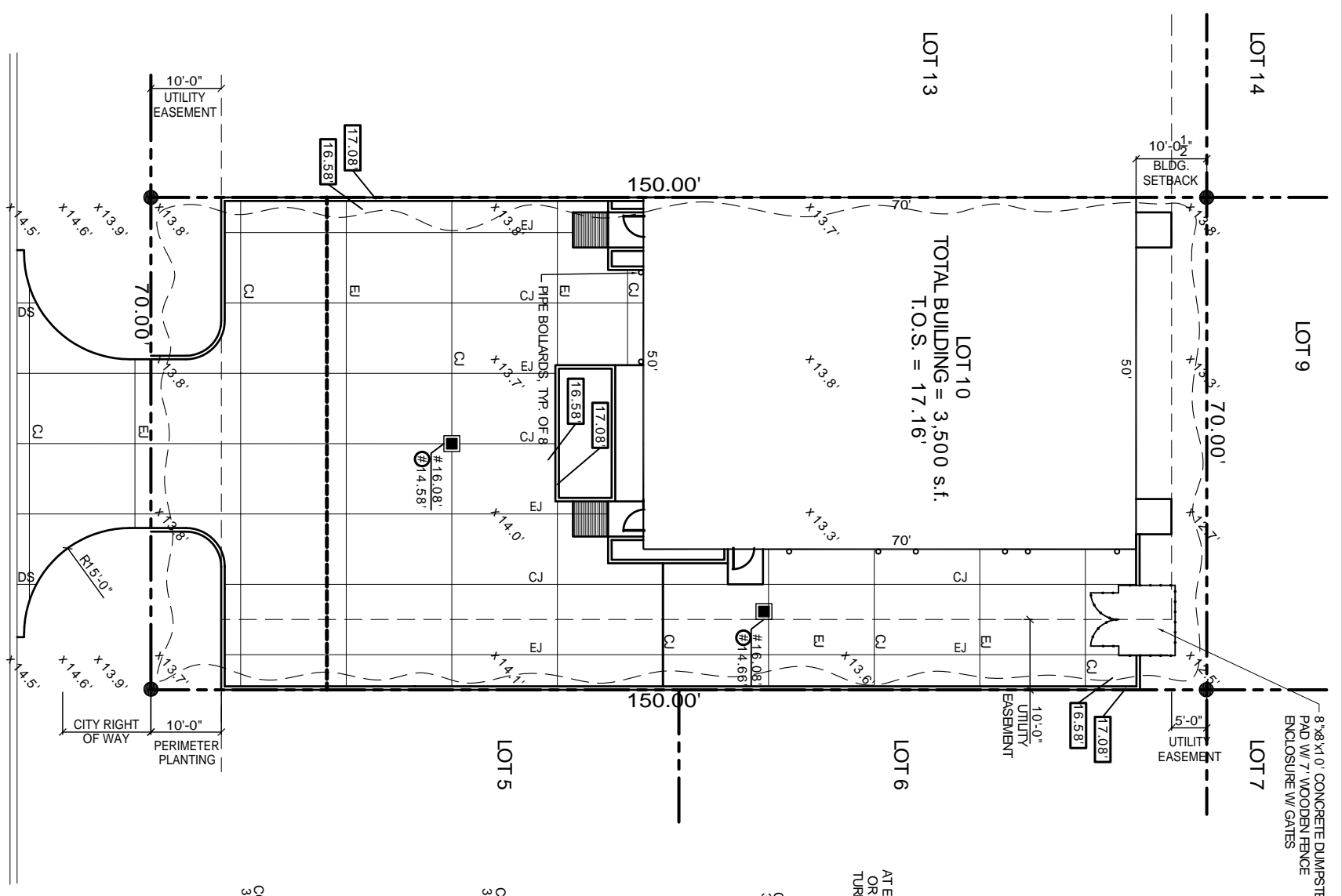
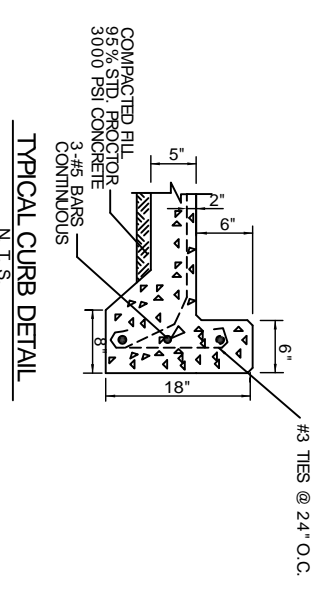
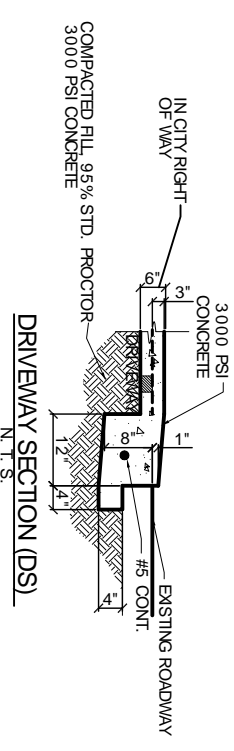
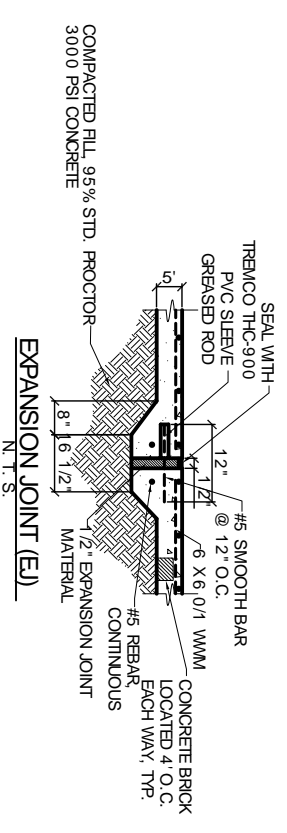
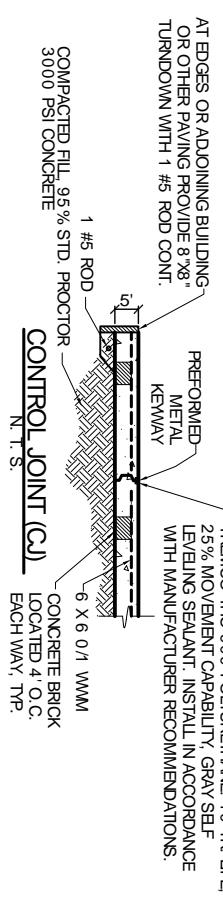
C-3

OF 17

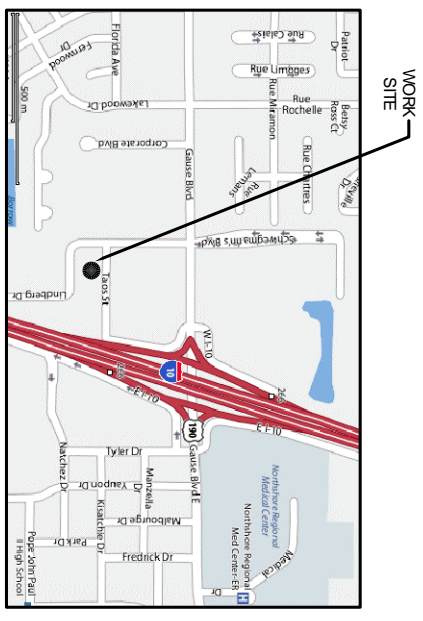
LEGEND:

- PROPERTY LINE
- SERVITUDE / EASEMENT
- BUILDING SETBACK
- NEW BUILDING
- NEW DROP INLET w/TEMP. SILT FENCING
- CONTROL JOINT
- EXPANSION JOINT
- T.O. GRATE ELEVATION
- INVERT ELEVATION
- NEW ELEVATIONS
- EXISTING ELEVATIONS
- TEMPORARY SILT FENCING
- NEW 6" CURB. SEE DETAIL THIS SHEET

(E) T.O. GRATE ELEVATION
(I) INVERT ELEVATION
(N) NEW ELEVATIONS
(E) EXISTING ELEVATIONS



SEE SHEET A-1 FOR LOCATIONS, TYP OF 8



PAVING PLAN
SCALE 1"=10'-0"

ZONED C-4

F.M. REV. DATE: 8-26-08