

**DAMMON**  
ENGINEERING, INC.

CHIEF ENGINEER  
EMMETT  
DAMMON, P.E.  
CHIEF ARCHITECT  
ROBERT  
WILTSE

1095 FLORIDA AVENUE  
SUDBEL, LA. 70458  
OFFICE: 985-643-5832  
FAX: 985-641-5950

WEBSITE  
WWW.DAMMONENGINEERING.COM  
EMAIL  
DAMMONENGB@BLSUDUH.NET

ARCHITECTURE  
ENGINEERING  
STUDIES  
PLANNING  
INVESTIGATION  
EXPERT WITNESS

NEW OFFICE/  
WAREHOUSE

GUASTELLA CONSTRUCTION  
LOT #10 TAOS STREET  
SUDBEL, LA 70458

UTILITY  
PLAN

REV:

SCALE: AS NOTED

JOB#: 1572

DATE: 6-20-08

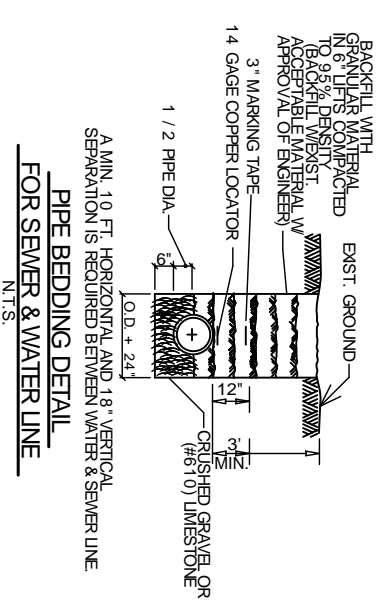
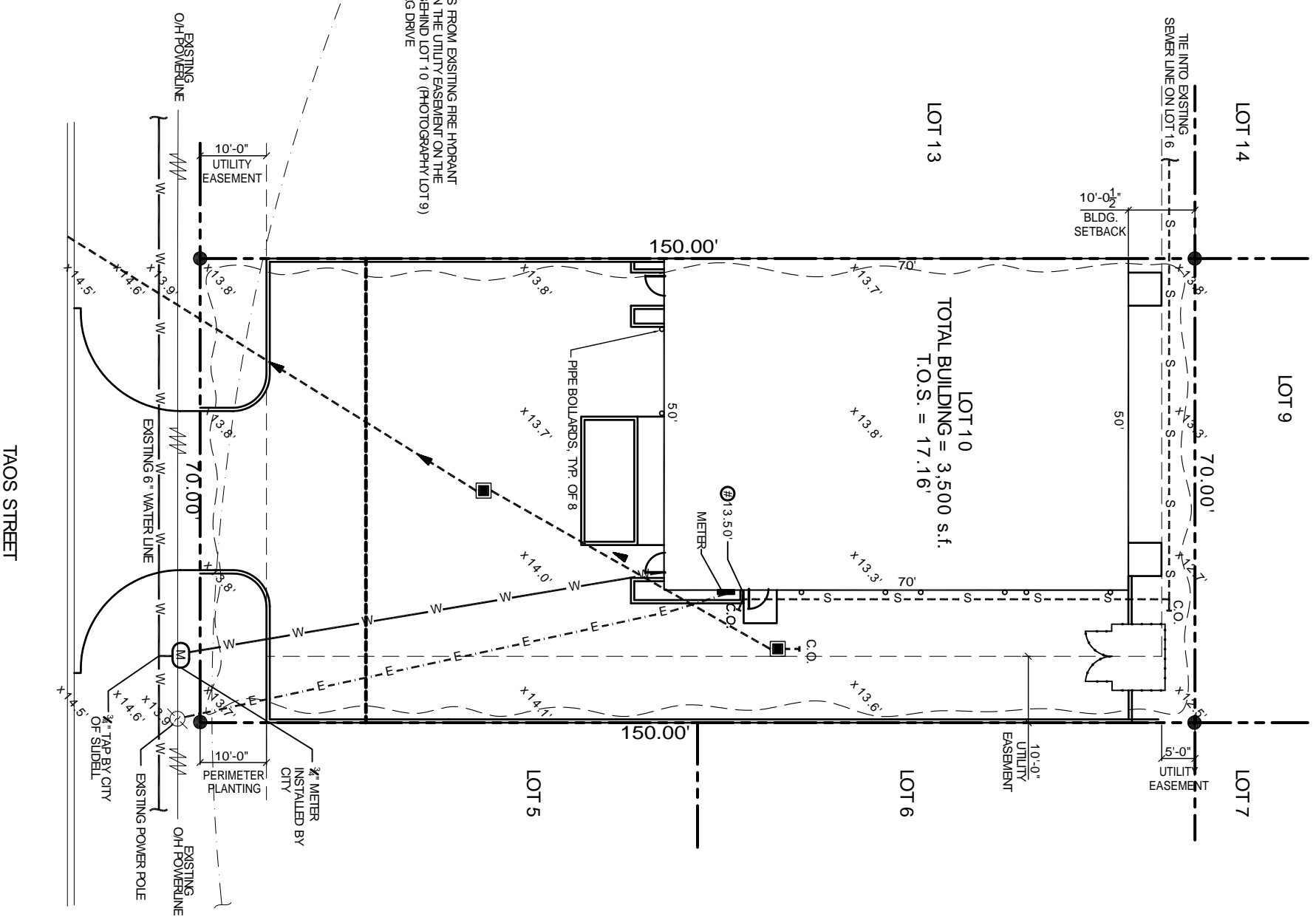
SHEET 6

C-5

OF 17

- LEGEND**
- - - - - PROPERTY LINE
  - - - - - BUILDING SETBACK
  - - - - - NEW BUILDING OUTLINE
  - - - - - SERVITUDE / EASEMENT
  - - - - - NEW WATER LINE
  - - - - - NEW SEWER LINE
  - - - - - NEW POWER LINE
  - - - - - SILT FENCING DETAIL
  - - - - - NEW DRAIN LINE

**ZONED C-4**



UTILITY PLAN  
SCALE 1" = 10'-0"

F.M. REV. DATE: 8-26-08