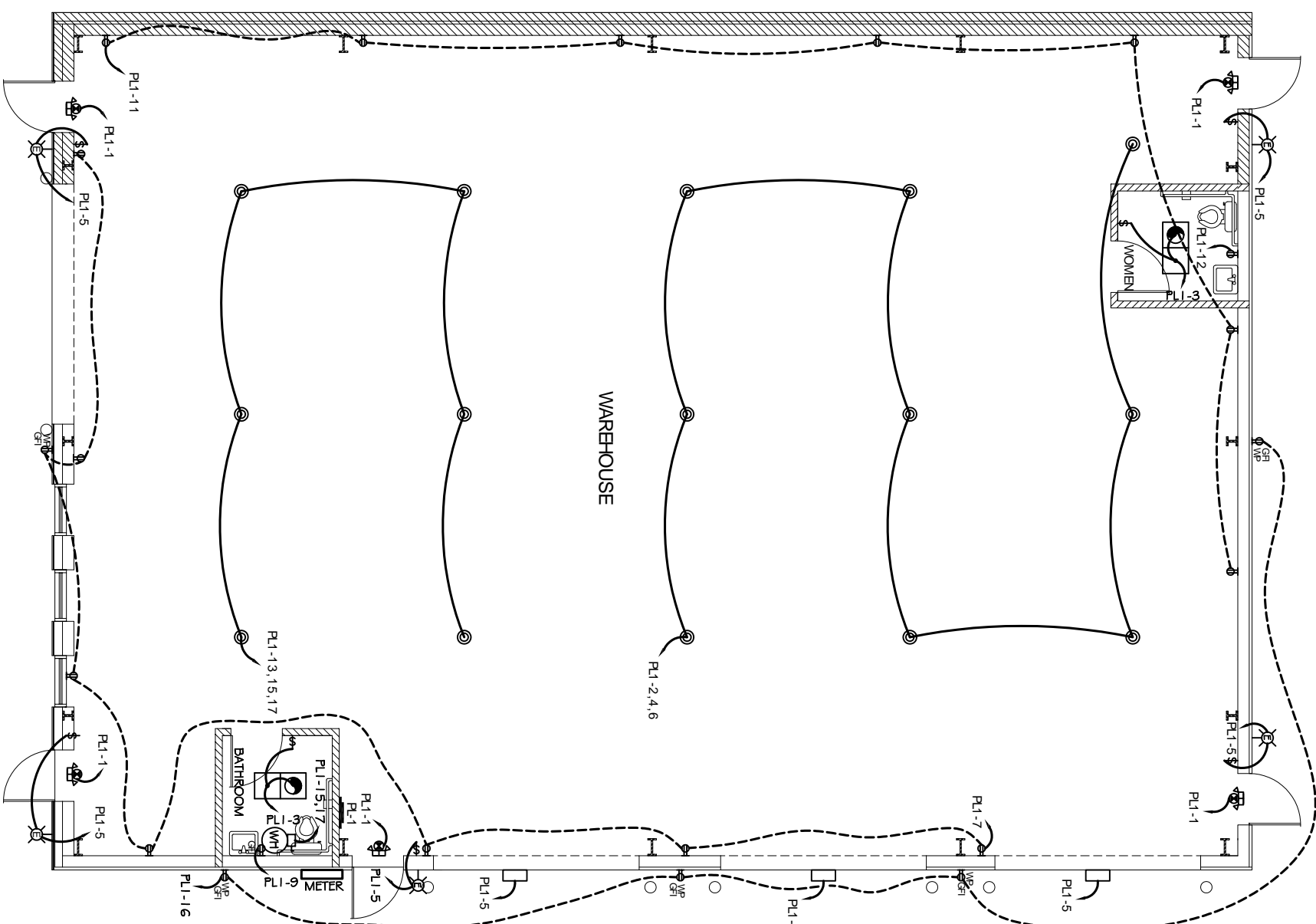


ELECTRICAL NOTES

1. ALL WORK SHALL CONFORM TO THE LATEST EDITION OF THE NATIONAL ELECTRICAL CODE, THE GOVERNING ELECTRICAL CODE AND ALL OTHER INSPECTION DEPARTMENTS HAVING JURISDICTION. OBTAIN CERTIFICATES OR APPROVAL WHERE REQUIRED.
2. ALL MATERIALS FURNISHED SHALL BE NEW AND SHALL BE U.L. LISTED.
3. THE DRAWINGS INDICATE SIZE AND GENERAL LOCATION OF WORK. SCALE DIMENSIONS SHALL NOT BE USED. THE EXACT LOCATION AND LOCATION OF ALL LIGHTING FIXTURES, RECEPTACLES AND TELEPHONE OUTLETS, ETC. SHALL BE DETERMINED BY ACTUAL CONDITIONS IN THE FIELD.
4. PRIOR TO BIDDING, CONTRACTOR SHALL VISIT THE JOB SITE AND FAMILIARIZE THEMSELVES WITH THE EXISTING CONDITIONS.
5. ELECTRICAL CONTRACTOR SHALL COORDINATE HIS WORK WITH OTHER TRADES AND WITH OTHER CONTRACTORS WHOSE WORK MAY AFFECT THIS INSTALLATION.
6. ELECTRICAL CONTRACTOR SHALL COORDINATE INCOMING ELECTRICAL SERVICE WITH UTILITY COMPANY AND INCLUDE IN HIS BID ALL CHARGES AND FEES INCURRED IN MODIFICATIONS.
7. WHERE MORE THAN ONE SWITCH OCCURS IN THE SAME LOCATION, THEY SHALL BE INSTALLED IN A GANG TYPE BOX UNDER ONE COVER PLATE.
8. ELECTRICAL CONTRACTOR SHALL COORDINATE THE TELEPHONE INSTALLATION WITH THE TELEPHONE COMPANY AND THE GENERAL CONTRACTOR.
9. ELECTRICAL CONTRACTOR, BEFORE INSTALLING ANY OF THE WORK, SHALL SEE THAT IT DOES NOT INTERFERE WITH CLEARANCES REQUIRED FOR FINISHED COLUMNS, HANG CEILING, PLASTER, PARTITIONS, WALLS, ETC. AS SHOWN IN THE ARCHITECTURAL DRAWINGS AND DETAILS. IF ANY WORK IS INSTALLED AND IT LATER DEVELOPS THAT SUCH DETAILS OR DESIGN CANNOT BE FOLLOWED, THE CONTRACTOR, AT HIS OWN EXPENSE, SHALL MAKE SUCH CHANGES IN THE WORK AS DIRECTED BY THE ARCHITECT, AS WELL AS TO PERMIT THE INSTALLATION OF THE ARCHITECTURAL WORK AS SHOWN ON THE PLANS AND DETAILS. M-2 MC MAY BE USED FOR LIGHTING WHIRS.
10. PERFORM TEST REQUIRED BY THE OWNER OR THE ENGINEER IN CONNECTION WITH THE OPERATION OF THE ELECTRICAL SYSTEM IN THE BUILDING.
11. ALL TESTS SHALL BE MADE IN ACCORDANCE WITH THE LATEST STANDARD OF THE IEEE AND THE NATIONAL ELECTRICAL CODE.
12. MINIMUM CONDUCTOR SIZE SHALL BE #12, 600V INSULATION. MINIMUM SIZE CONDUIT SHALL BE 1/2" EMT FOR INTERIOR USE, AND 3/4" RIGID ALUMINUM FOR EXTERIOR USE. USE THE NMC CABLE COPPER, FOR LIGHTS AND RECEPTACLE CIRCUITS. EXTERIOR FITTINGS SHALL BE CAST BOXES AND COVERS. INTERIOR FITTINGS SHALL BE CAST WHERE EXPOSED ON WALLS. STAMPED BOXES MAY BE USED ABOVE CEILING IN AIR CONDITIONED SPACES.
13. CONTRACTOR SHALL INSTALL WIRING AND OTHER CIRCUIT COMPONENTS TO MATCH EQUIPMENT ACTUALLY INSTALLED.
14. INSTALL GROUND FAULT RECEPTACLES AT RECEPTACLE LOCATIONS WITHIN 5' OF SINKS OR LAVATORIES, AND AT EXTERIOR LOCATIONS. EXTERIOR RECEPTACLES SHALL ALSO BE WATERPROOF.
15. BONDING AND GROUNDING SHALL BE IN ACCORDANCE WITH NFPA 70:230-63, NFPA 250-23, 250-71 & 250-72.
16. GROUND NEUTRAL IN ACCORDANCE WITH NFPA 70:250-23b.
17. FUSES SHALL BE FIT CLASS K5, 250, 000 AMP INTERRUPTING CAP.
18. PROVIDE SERVICES OF A FIRE/SMOKE DETECTION AND ALARM COMPANY TO DESIGN AND INSTALL ALARM SYSTEM TO MEET REQUIREMENTS OF THE STATE FIRE MARSHAL.
19. EXTERIOR LIGHTING SHALL BE SHADED OR INWARDLY DIRECTED IN SUCH A MANNER SO THAT NO DIRECT LIGHTING OR GLARE IS CAST BEYOND THE PROPERTY LINE. THE INTENSITY OF SUCH LIGHTING SHALL NOT EXCEED ONE FOOT CANDLE AS MEASURED AT THE ADJUTING PROPERTY LINE.
20. ALL ELECTRICAL, MECHANICAL AND PLUMBING PENETRATING FIRE PARTITIONS SHALL BE FIRE CALKED. (PENETRATIONS THROUGH RATED CONSTRUCTION SHALL BE SEALED WITH A MATERIAL CAPABLE OF PREVENTING THE PASSAGE OF FLAMES AND HOT GASES WHEN TESTED IN ACCORDANCE WITH ASTM-E814.)

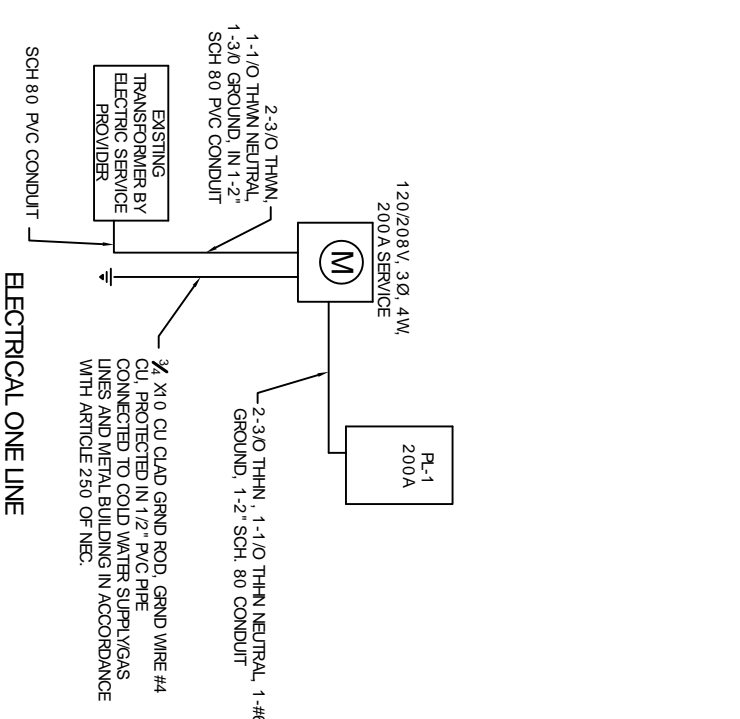


POWER & LIGHTING PLAN
SCALE: 1/4" = 1'-0"

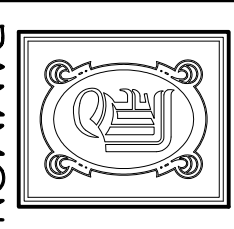
LEGEND

- - 2'x4' RECESSED FLUORESCENT LAMP, STEEL HOUSING, NUMBER INDICATES # OF BULBS
- - VENT / LIGHT
- ⊕ - EXT. LIGHT/ EMERGENCY COMBO PACK 90 MINUTE BATTERY BACK-UP
- ⊗ - EXTERIOR WALL MOUNTED LIGHT, SELECTED BY OWNER
- ⊙ - SWITCH
- ⊕ - HIGH BAY LIGHT, 208V, 3Ø, 400W, STYLE BY OWNER
- ⊕ - POWER PANEL
- ⊕ - 120V, 20A DUPLEX RECEPTACLE
- ⊕ - 120V, 20A DUPLEX RECEPTACLE WEATHERPROOF
- ⊕ - 120V, 20A DUPLEX RECEPTACLE, GR
- ⊕ - FUSED DISCONNECT
- ⊕ - POWER PANEL
- ⊕ - WALL PACK, SELECTED BY OWNER
- ⊕ - FIRE BARRIER CONSTRUCTION

PANEL: R1-1		PANEL: R1-2		PANEL: R1-3		PANEL: R1-4		PANEL: R1-5		PANEL: R1-6	
LOCATION: BATHROOM WALL		LOCATION: BATHROOM WALL		LOCATION: BATHROOM WALL		LOCATION: BATHROOM WALL		LOCATION: BATHROOM WALL		LOCATION: BATHROOM WALL	
NO.	DESCRIPTION	AMPS	VA	NO.	DESCRIPTION	AMPS	VA	NO.	DESCRIPTION	AMPS	VA
1	ALL DISCONNECT / EXT LIGHTS	20	200	1	ALL DISCONNECT / EXT LIGHTS	20	200	1	ALL DISCONNECT / EXT LIGHTS	20	200
2	RECEPTACLE LIGHTS / VENTS	20	100	2	RECEPTACLE LIGHTS / VENTS	20	100	2	RECEPTACLE LIGHTS / VENTS	20	100
3	RECEPTACLE LIGHTS	20	100	3	RECEPTACLE LIGHTS	20	100	3	RECEPTACLE LIGHTS	20	100
4	ALL EXTERIOR LIGHTS	20	100	4	ALL EXTERIOR LIGHTS	20	100	4	ALL EXTERIOR LIGHTS	20	100
5	RECEPTACLE WEATHERPROOF	20	100	5	RECEPTACLE WEATHERPROOF	20	100	5	RECEPTACLE WEATHERPROOF	20	100
6	RECEPTACLE WEATHERPROOF, GR	20	100	6	RECEPTACLE WEATHERPROOF, GR	20	100	6	RECEPTACLE WEATHERPROOF, GR	20	100
7	RECEPTACLE WEATHERPROOF, GR	20	100	7	RECEPTACLE WEATHERPROOF, GR	20	100	7	RECEPTACLE WEATHERPROOF, GR	20	100
8	RECEPTACLE WEATHERPROOF, GR	20	100	8	RECEPTACLE WEATHERPROOF, GR	20	100	8	RECEPTACLE WEATHERPROOF, GR	20	100
9	RECEPTACLE WEATHERPROOF, GR	20	100	9	RECEPTACLE WEATHERPROOF, GR	20	100	9	RECEPTACLE WEATHERPROOF, GR	20	100
10	RECEPTACLE WEATHERPROOF, GR	20	100	10	RECEPTACLE WEATHERPROOF, GR	20	100	10	RECEPTACLE WEATHERPROOF, GR	20	100
11	RECEPTACLE WEATHERPROOF, GR	20	100	11	RECEPTACLE WEATHERPROOF, GR	20	100	11	RECEPTACLE WEATHERPROOF, GR	20	100
12	RECEPTACLE WEATHERPROOF, GR	20	100	12	RECEPTACLE WEATHERPROOF, GR	20	100	12	RECEPTACLE WEATHERPROOF, GR	20	100
13	RECEPTACLE WEATHERPROOF, GR	20	100	13	RECEPTACLE WEATHERPROOF, GR	20	100	13	RECEPTACLE WEATHERPROOF, GR	20	100
14	RECEPTACLE WEATHERPROOF, GR	20	100	14	RECEPTACLE WEATHERPROOF, GR	20	100	14	RECEPTACLE WEATHERPROOF, GR	20	100
15	RECEPTACLE WEATHERPROOF, GR	20	100	15	RECEPTACLE WEATHERPROOF, GR	20	100	15	RECEPTACLE WEATHERPROOF, GR	20	100
16	RECEPTACLE WEATHERPROOF, GR	20	100	16	RECEPTACLE WEATHERPROOF, GR	20	100	16	RECEPTACLE WEATHERPROOF, GR	20	100
17	RECEPTACLE WEATHERPROOF, GR	20	100	17	RECEPTACLE WEATHERPROOF, GR	20	100	17	RECEPTACLE WEATHERPROOF, GR	20	100
18	RECEPTACLE WEATHERPROOF, GR	20	100	18	RECEPTACLE WEATHERPROOF, GR	20	100	18	RECEPTACLE WEATHERPROOF, GR	20	100
19	RECEPTACLE WEATHERPROOF, GR	20	100	19	RECEPTACLE WEATHERPROOF, GR	20	100	19	RECEPTACLE WEATHERPROOF, GR	20	100
20	RECEPTACLE WEATHERPROOF, GR	20	100	20	RECEPTACLE WEATHERPROOF, GR	20	100	20	RECEPTACLE WEATHERPROOF, GR	20	100
21	RECEPTACLE WEATHERPROOF, GR	20	100	21	RECEPTACLE WEATHERPROOF, GR	20	100	21	RECEPTACLE WEATHERPROOF, GR	20	100
22	RECEPTACLE WEATHERPROOF, GR	20	100	22	RECEPTACLE WEATHERPROOF, GR	20	100	22	RECEPTACLE WEATHERPROOF, GR	20	100
23	RECEPTACLE WEATHERPROOF, GR	20	100	23	RECEPTACLE WEATHERPROOF, GR	20	100	23	RECEPTACLE WEATHERPROOF, GR	20	100
24	RECEPTACLE WEATHERPROOF, GR	20	100	24	RECEPTACLE WEATHERPROOF, GR	20	100	24	RECEPTACLE WEATHERPROOF, GR	20	100
25	RECEPTACLE WEATHERPROOF, GR	20	100	25	RECEPTACLE WEATHERPROOF, GR	20	100	25	RECEPTACLE WEATHERPROOF, GR	20	100
26	RECEPTACLE WEATHERPROOF, GR	20	100	26	RECEPTACLE WEATHERPROOF, GR	20	100	26	RECEPTACLE WEATHERPROOF, GR	20	100
27	RECEPTACLE WEATHERPROOF, GR	20	100	27	RECEPTACLE WEATHERPROOF, GR	20	100	27	RECEPTACLE WEATHERPROOF, GR	20	100
28	RECEPTACLE WEATHERPROOF, GR	20	100	28	RECEPTACLE WEATHERPROOF, GR	20	100	28	RECEPTACLE WEATHERPROOF, GR	20	100
29	RECEPTACLE WEATHERPROOF, GR	20	100	29	RECEPTACLE WEATHERPROOF, GR	20	100	29	RECEPTACLE WEATHERPROOF, GR	20	100
30	RECEPTACLE WEATHERPROOF, GR	20	100	30	RECEPTACLE WEATHERPROOF, GR	20	100	30	RECEPTACLE WEATHERPROOF, GR	20	100
TOTAL CONNECTED LOAD (VA)		400	4000	TOTAL CONNECTED LOAD (VA)		400	4000	TOTAL CONNECTED LOAD (VA)		400	4000
TOTAL AVAILABLE (VA)		400	4000	TOTAL AVAILABLE (VA)		400	4000	TOTAL AVAILABLE (VA)		400	4000



ELECTRICAL ONE LINE
N.T.S.



DAMMON ENGINEERING, INC.
 CHIEF ENGINEER
 EMMETT DAMMON, P.E.
 CHIEF ARCHITECT
 ROBERT WILTSE

1095 FLORIDA AVENUE
 SLIDELL, LA. 70458
 OFFICE: 985-649-5832
 FAX: 985-641-5950
 WWW.DAMMONENGINEERING.COM

ARCHITECTURE
 ENGINEERING
 STUDIES
 PLANNING
 INVESTIGATION
 EXPERT WITNESSES

NEW OFFICE/
 WAREHOUSE

GUASTELLA CONSTRUCTION
 LOT # 10 TAOS STREET
 SLIDELL, LA 70458

POWER &
 LIGHTING PLAN,
 NOTES &
 SCHEDULE

REV:
 SCALE AS NOTED
 JOB#: 1572
 DATE: 6-20-08
 SHEET 16

E-1