

**DAMMON ENGINEERING, INC.**

CHIEF ENGINEER  
EMMETT DAMMON, P.E.

CHIEF ARCHITECT  
ROBERT WILTSE

1095 FLORIDA AVENUE  
SLIDELL, LA. 70458  
OFFICE: 985-649-5832  
FAX: 985-641-5950

WEBSITE:  
WWW.DAMMONENGINEERING.COM

EMAIL:  
DAMMONENG@BELLSOUTH.NET

ARCHITECTURE

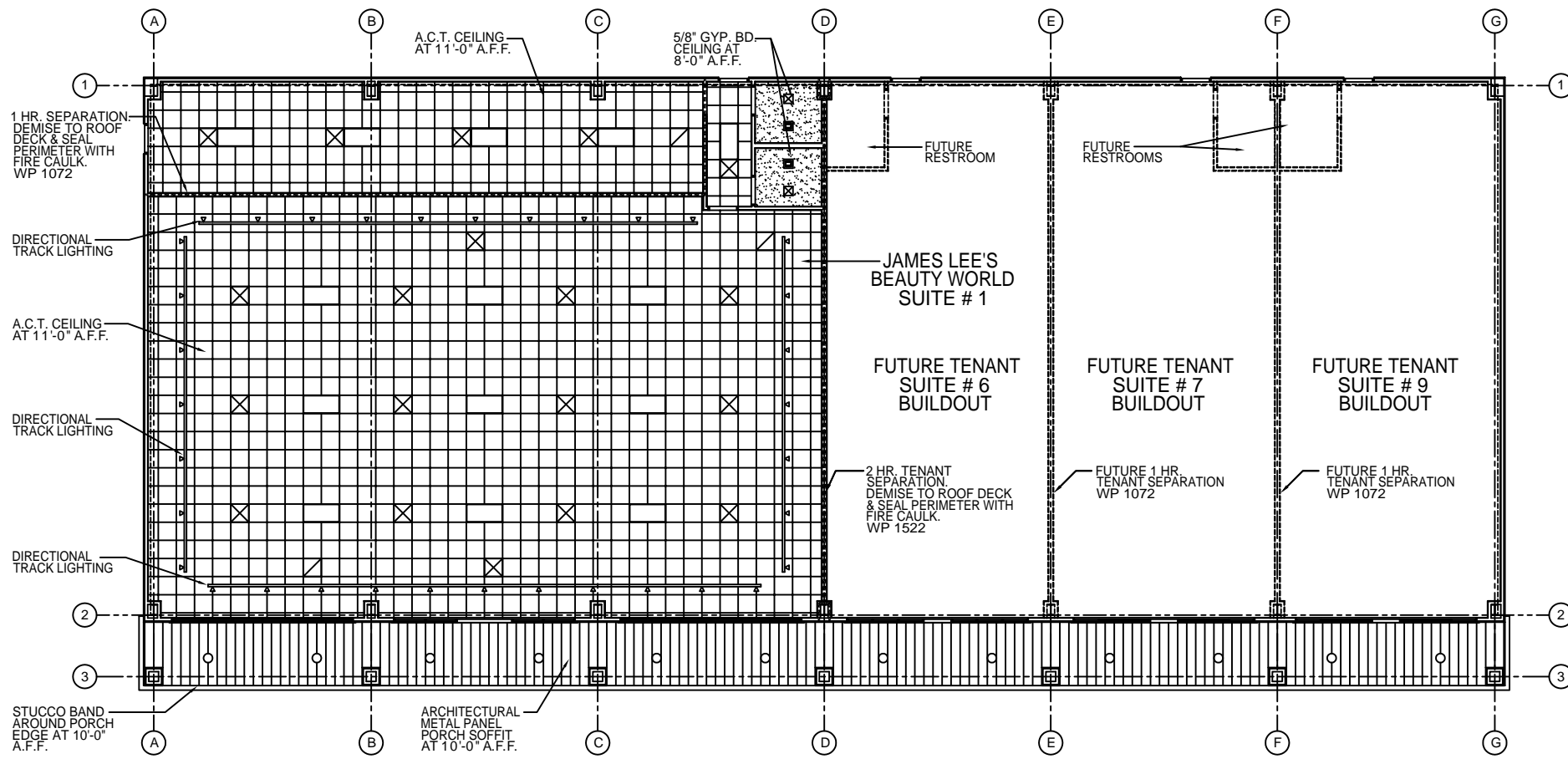
ENGINEERING

STUDIES

PLANNING

INVESTIGATION

EXPERT WITNESS



- LEGEND**
- 2'x4' FLUORESCENT LIGHT
  - DIRECTIONAL TRACK LIGHTING
  - EXHAUST FAN/LIGHT COMBO
  - EXTERIOR CAN LIGHT
  - SUPPLY AIR
  - RETURN AIR
  - A.C.T. CEILING GRID (2'x2')
  - GYPSUM BOARD CEILING

REFLECTED CEILING PLAN  
SCALE: 1/8"=1'

J D PLAZA  
345 GAUSE  
BOULEVARD  
WEST  
SLIDELL, LA

REFLECTED  
CEILING  
PLAN

REV:  
SCALE: AS NOTED  
JOB#: 2037  
DATE: 10-29-09  
SHEET 13

**A-5**

OF 19