

DAMMON ENGINEERING, INC.

CHIEF ENGINEER
EMMETT
DAMMON, P.E.

CHIEF ARCHITECT
ROBERT
WILTSE

1095 FLORIDA AVENUE
SLIDELL, LA. 70458
OFFICE: 985-649-5832
FAX: 985-641-5950

WEBSITE:
WWW.DAMMONENGINEERING.COM

EMAIL:
DAMMONENG@BELLSOUTH.NET

ARCHITECTURE

ENGINEERING

STUDIES

PLANNING

INVESTIGATION

EXPERT WITNESS

TENANT
BUILD-OUT

J D PLAZA
345 GAUSE
BOULEVARD
WEST
SLIDELL, LA

REFLECTED
CEILING
PLAN

REV:

SCALE: AS NOTED

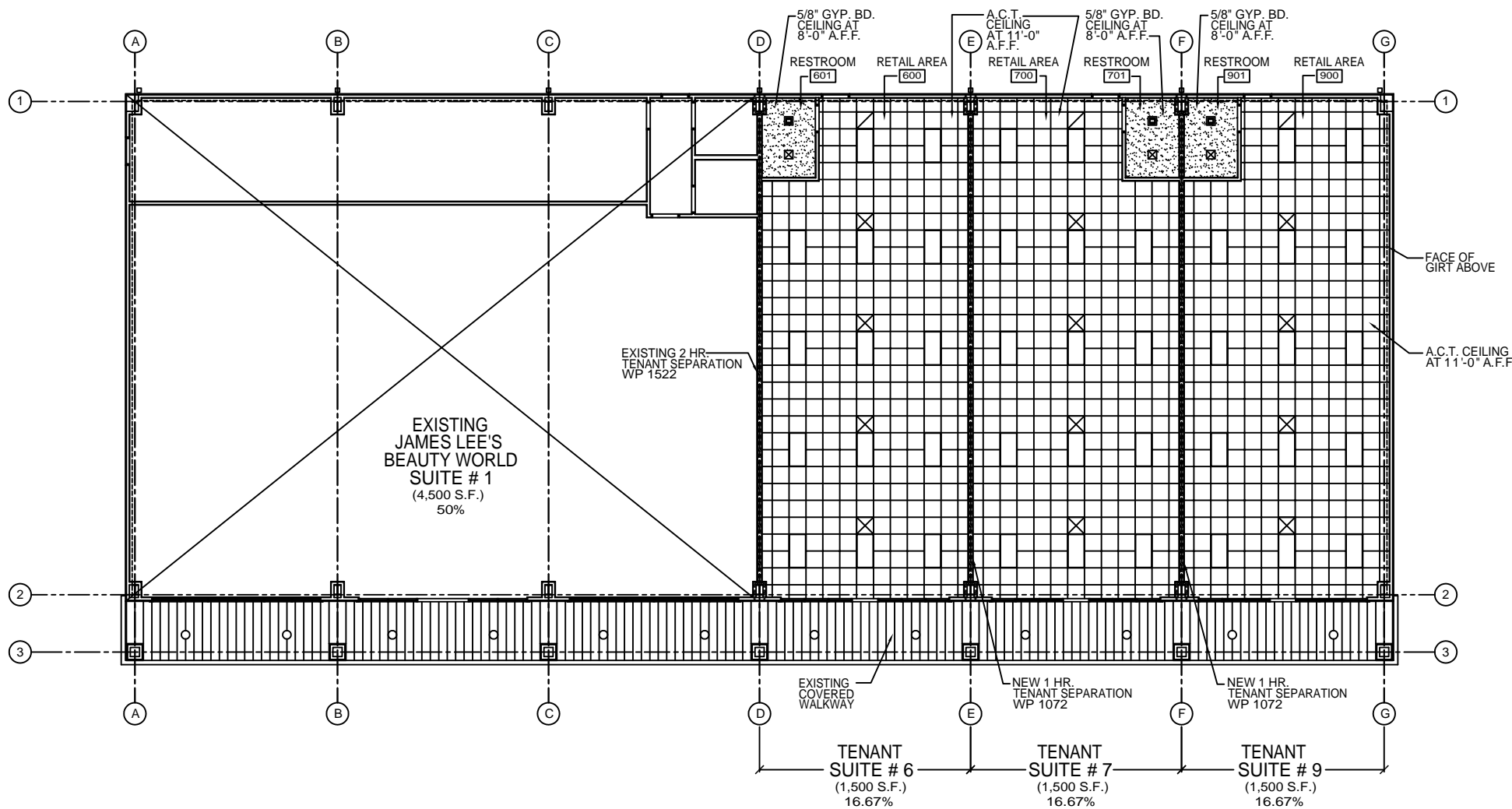
JOB#: 2070

DATE: 06-25-10

SHEET 4

A-2

OF 10



- LEGEND**
- 2'x4' FLUORESCENT LIGHT
 - EXHAUST FAN/LIGHT COMBO
 - SUPPLY AIR
 - RETURN AIR
 - A.C.T. CEILING GRID (2'x2')
 - GYPSUM BOARD CEILING

REFLECTED CEILING PLAN
SCALE: 1/8"=1'

