

4.6 PARKING AND PASSENGER LOADING ZONES.

4.6.1 MINIMUM NUMBER. PARKING SPACES REQUIRED TO BE ACCESSIBLE BY 4.1 SHALL COMPLY WITH 4.6.2 THROUGH 4.6.4. PASSENGER LOADING ZONES REQUIRED TO BE ACCESSIBLE BY 4.1 SHALL COMPLY WITH 4.6.5 AND 4.6.6.

4.6.2 LOCATION. ACCESSIBLE PARKING SPACES SERVING A PARTICULAR BUILDING SHALL BE LOCATED ON THE SHORTEST ACCESSIBLE ROUTE OF TRAVEL FROM ADJACENT PARKING TO ACCESSIBLE ENTRANCE. THAT DO NOT SERVE A PARTICULAR BUILDING, ACCESSIBLE ROUTE OF TRAVEL TO AN ACCESSIBLE PEDESTRIAN ENTRANCE OR ACCESSIBLE ENTRANCE WITH ADJACENT PARKING, ACCESSIBLE PARKING SPACES SHALL BE DISPersed AND LOCATED CLOSEST TO THE ACCESSIBLE ENTRANCES.

4.6.3 PARKING SPACES. PARKING SPACES FOR DISABLED PEOPLE SHALL BE AT LEAST 9'6" (2940 mm) WIDE AND SHALL HAVE AN ADJACENT ACCESSIBLE ASLE 60" (1525 mm) WIDE MINIMUM. PARKING SPACES SHALL BE PART OF AN ACCESSIBLE ROUTE TO THE BUILDING OR FACILITY ENTRANCE AND SHALL COMPLY WITH 4.3. TWO ACCESSIBLE PARKING SPACES MAY SHARE A COMMON ACCESSIBLE SIDEWALK OR OVERHANG SHALL NOT REDUCE THE CLEAR WIDTH OF AN ACCESSIBLE ROUTE. PARKING SPACES AND ACCESSIBLE ASLES SHALL BE LEVEL WITH SURFACE SLOPES NOT EXCEEDING 1:50 IN ALL DIRECTIONS.

EXCEPTION: IF ACCESSIBLE PARKING SPACES FOR VANS DESIGNED FOR HANDICAPPED PERSONS ARE PROVIDED, EACH SHOULD HAVE AN ADJACENT ACCESSIBLE ASLE AT LEAST 9'6" (2940mm) WIDE COMPLYING WITH 4.5, GROUND AND FLOOR SURFACES.

4.6.4 SIGNAGE. ACCESSIBLE PARKING SPACES SHALL BE DESIGNATED AS RESERVED FOR THE DISABLED BY A SIGN SHOWING THE SYMBOL OF ACCESSIBILITY (SEE 4.3.3.3). SUCH SIGNS SHALL NOT BE OCCUPIED BY A VEHICLE PARKED IN THE SPACE.

4.6.5 PASSENGER LOADING ZONES. PASSENGER LOADING ZONES SHALL PROVIDE AN ACCESSIBLE ASLE AT LEAST 60" (1525mm) WIDE AND 20" (508 mm) LONG ADJACENT AND PARALLEL TO THE VEHICLE PULL-UP SPACE (SEE FIG. 10). IF THERE ARE CURBS BETWEEN THE ACCESSIBLE ASLE AND THE VEHICLE PULL-UP SPACE, THEN A CURB RAMP COMPLYING WITH 4.7 SHALL BE PROVIDED. VEHICLE STANDING SPACES AND ACCESSIBLE ASLES SHALL BE LEVEL WITH SURFACE SLOPES NOT EXCEEDING 1:50 IN ALL DIRECTIONS.

4.6.6 VERTICAL CLEARANCE. PASSENGER LOADING ZONES SHALL PROVIDE AN ACCESSIBLE ASLE AT LEAST 60" (1525mm) WIDE AND 20" (508 mm) LONG ADJACENT AND PARALLEL TO THE VEHICLE PULL-UP SPACE (SEE FIG. 10). IF THERE ARE CURBS BETWEEN THE ACCESSIBLE ASLE AND THE VEHICLE PULL-UP SPACE, THEN A CURB RAMP COMPLYING WITH 4.7 SHALL BE PROVIDED. VEHICLE STANDING SPACES AND ACCESSIBLE ASLES SHALL BE LEVEL WITH SURFACE SLOPES NOT EXCEEDING 1:50 IN ALL DIRECTIONS.

4.7 CURB RAMPS.

4.7.1 LOCATION. CURB RAMPS COMPLYING WITH 4.7 SHALL BE PROVIDED WHEREVER AN ACCESSIBLE ROUTE CROSSES A CURB.

4.7.2 SLOPE. SLOPES OF CURB RAMPS SHALL COMPLY WITH 4.8.2. THE SLOPE SHALL BE MEASURED AS SHOWN IN FIG. 11. THE MAXIMUM SLOPE FOR CURB RAMPS ON STREETS SHALL BE FLAT AND FREE OF ANY PITTS. MAXIMUM SLOPES OF ADJACENT OUTSIDE ROAD SURFACE IMMEDIATELY ADJACENT TO THE CURB RAMP, OR ACCESSIBLE ROUTE SHALL NOT EXCEED 1:20.

4.7.3 WIDTH. THE MINIMUM WIDTH OF A CURB RAMP SHALL BE 36", EXCLUSIVE OF FLARED SIDES.

4.7.4 SURFACE. SURFACES OF CURB RAMPS SHALL COMPLY WITH 4.5.

4.7.5 SIDES OF CURB RAMPS. IF A CURB RAMP IS LOCATED WHERE PEDESTRIANS MUST WALK ACROSS THE RAMP, OR WHERE IT IS NOT PROTECTED BY HANDRAILS OR GUARDRAILS, THEN IT SHALL HAVE FLARED SIDES OF 1:10 (SEE FIG. 12). CURB RAMPS WITH RETURNED CURBS MAY BE USED WHERE PEDESTRIANS WOULD NOT NORMALLY WALK ACROSS THE RAMP (SEE FIG. 12(b)).

4.7.6 BUILT-UP CURB RAMPS. BUILT-UP CURB RAMPS SHALL BE LOCATED SO THAT THEY DO NOT PROJECT INTO VEHICULAR TRAFFIC LANES (SEE FIG. 13).

4.7.7 WARNING SURFACES. (REMOVED AND RESERVED).

4.7.8 OBSTRUCTIONS. CURB RAMPS SHALL BE LOCATED OR PROTECTED TO PREVENT THEIR OBSTRUCTION BY PARKED VEHICLES.

4.7.9 LOCATION AT MARKED CROSSINGS. CURB RAMPS AT MARKED CROSSINGS SHALL BE WHOLLY CONTAINED WITHIN THE MARKINGS, EXCLUDING ANY FLARED SIDES.

4.7.10 DIAGONAL CURB RAMPS. IF DIAGONAL (OR CORNER TYPE) CURB RAMPS HAVE RETURNED CURBS OR OTHER WELL-DEFINED EDGES, SUCH EDGES SHALL BE PARALLEL TO THE DIRECTION OF PEDESTRIAN TRAVEL. EDGES OF CURB RAMPS SHALL BE PARALLEL TO THE EXISTING ROAD SURFACE. IF FLARED SIDES ARE USED, THEY SHALL ALSO BE PARALLEL TO THE EXISTING ROAD SURFACE. RETURNED CURBS LOCATED ON EACH SIDE OF THE CURB RAMP AND WITHIN THE MARKED CROSSING.

4.7.11 ISLANDS. ANY RAISED ISLANDS IN CROSSING SHALL BE CUT THROUGH ALONG WITH THE STREET OR WALK. CURB RAMPS AT BOTH SIDES OF ISLANDS SHALL BE PARALLEL TO THE EXISTING ROAD SURFACE AND BE AT LEAST 48" (1220mm) LONG IN THE PART OF THE ISLAND INTERSECTED BY THE CROSSING.

4.7.12 UNGUARDED INTERSECTIONS. (REMOVED AND RESERVED).

4.8 RAMPS.

4.8.1 GENERAL. ANY PART OF AN ACCESSIBLE ROUTE WITH A SLOPE GREATER THAN 1:20 SHALL BE CONSIDERED A RAMP AND SHALL COMPLY WITH 4.8.

4.8.2 SLOPE & RISE. THE LEAST POSSIBLE SLOPE SHALL BE USED FOR ANY RAMP. THE MAXIMUM SLOPE OF A RAMP IN NEW CONSTRUCTION SHALL BE 1:12. THE MAXIMUM RISE FOR EXISTING RAMPS SHALL BE 1:12. THE MAXIMUM RISE FOR EXISTING RAMPS AT EXISTING SITES OR IN EXISTING BUILDINGS OR FACILITIES MAY HAVE SLOPES AND RISE AS SHOWN IN TABLE 2. IF SPACE LIMITATIONS PROHIBIT THE USE OF A 1:12 SLOPE OR LESS (SEE 4.1.4).

4.8.3 CLEAR WIDTHS. THE MINIMUM CLEAR WIDTH OF A RAMP SHALL BE 36" (915mm).

4.8.4 LANDINGS. RAMPS SHALL HAVE LEVEL LANDINGS AT THE BOTTOM AND TOP OF EACH RAMP. LANDINGS SHALL HAVE THE FOLLOWING FEATURES:

- (1) THE LANDING SHALL BE AT LEAST AS WIDE AS THE RAMP RUN LEADING TO IT.
- (2) THE LANDING LENGTH SHALL BE A MINIMUM OF 60" (1525mm) CLEAR.
- (3) IF RAMPS CHANGE DIRECTION AT LANDINGS, THE MINIMUM LANDING SIZE SHALL BE 60" BY 60" (1525mm BY 1525mm).
- (4) IF A DOORWAY IS LOCATED AT A LANDING, THEN THE AREA IN FRONT OF THE DOORWAY SHALL COMPLY WITH 4.13.6.

4.8.5 HANDRAILS. IF A RAMP RUN HAS A RISE GREATER THAN 6" (152mm) OR A HORIZONTAL PROJECTION GREATER THAN 12" (305mm), THEN IT SHALL HAVE HANDRAILS ON BOTH SIDES. HANDRAILS ARE NOT REQUIRED ON CURB RAMPS. HANDRAILS SHALL COMPLY WITH 4.8.6 AND SHALL HAVE THE FOLLOWING FEATURES:

- (1) HANDRAILS SHALL BE PROVIDED ALONG BOTH SIDES OF RAMP SEGMENTS. THE INSIDE HANDRAIL ON SWITCHBACK OR DOGGED RAMPS SHALL ALWAYS BE CONTINUOUS.
- (2) IF HANDRAILS ARE NOT CONTINUOUS, THEY SHALL EXTEND AT LEAST 12" (305mm) BEYOND THE TOP AND BOTTOM OF THE RAMP SEGMENT AND SHALL BE PARALLEL WITH THE FLOOR OR GROUND SURFACE.
- (3) THE CLEAR SPACE BETWEEN THE HANDRAIL AND THE WALL SHALL BE 1-1/2" (38mm).
- (4) GRIPPING SURFACES SHALL BE CONTINUOUS.
- (5) TOP OF HANDRAIL GRIPPING SURFACES SHALL BE MOUNTED BETWEEN 30" & 34" (760 mm & 865mm) ABOVE RAMP SURFACES.
- (6) ENDS OF HANDRAILS SHALL BE EITHER ROUNDED OR RETURNED SMOOTHLY TO FLOOR, WALL, OR POST.
- (7) HANDRAILS SHALL NOT ROTATE WITHIN THEIR FITTINGS.

4.8.6 CROSS SLOPE & SURFACES. THE CROSS SLOPE OF RAMP SURFACES SHALL BE NO GREATER THAN 1:50. RAMP SURFACES SHALL COMPLY WITH 4.5.

4.8.7 EDGE PROTECTION. RAMPS AND LANDINGS WITH DROP-OFFS SHALL HAVE CURBS, WALLS, BAILINGS, OR PROTECTIVE SURFACES THAT PREVENT PEOPLE FROM SLIPPING OFF THE RAMP. CURBS SHALL BE A MINIMUM OF 2" (50mm) HIGH (SEE FIG. 17).

4.8.8 OUTDOOR CONDITIONS. OUTDOOR RAMPS AND THEIR APPROACHES SHALL BE DESIGNED SO THAT WATER WILL NOT ACCUMULATE ON WALKING SURFACES.

4.9 STAIRS.

4.9.1 MINIMUM NUMBER. STAIRS REQUIRED TO BE ACCESSIBLE BY 4.1 SHALL COMPLY WITH 4.9.

4.9.2 TREADS & RISERS. ON ANY GIVEN FLIGHT OF STAIRS, ALL STEPS SHALL HAVE UNIFORM RISER HEIGHTS AND UNIFORM TREADS. STAIR TREADS SHALL BE NO LESS THAN 11" (280mm) WIDE, MEASURED FROM RISER TO RISER (SEE FIG. 18(a)). OPEN RISERS ARE NOT PERMITTED ON ACCESSIBLE ROUTES.

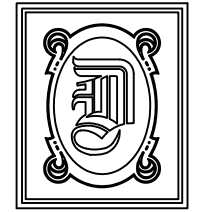
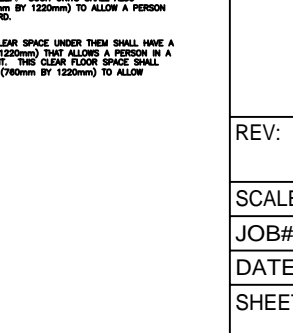
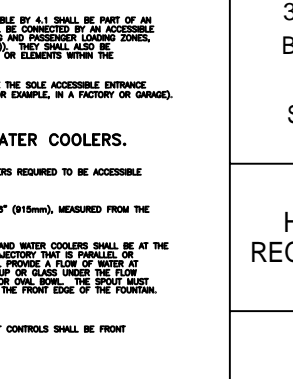
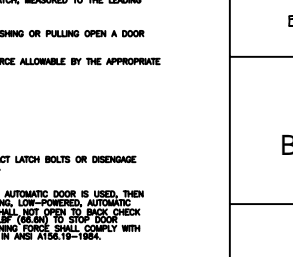
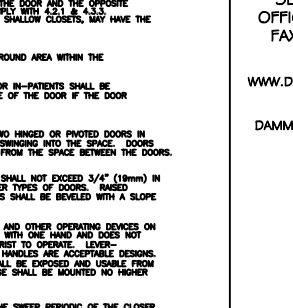
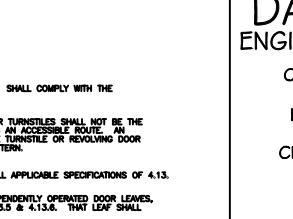
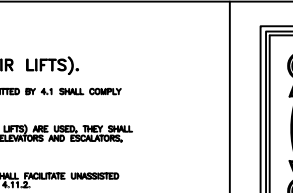
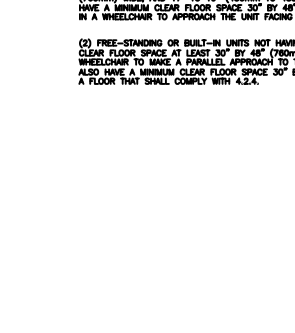
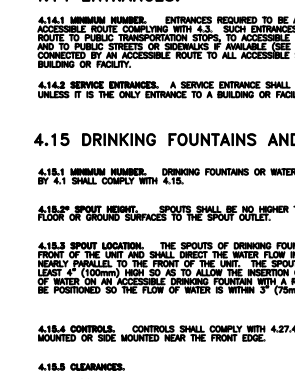
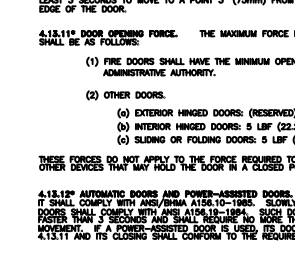
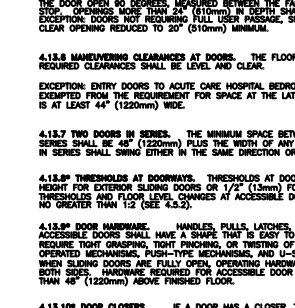
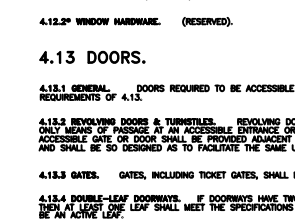
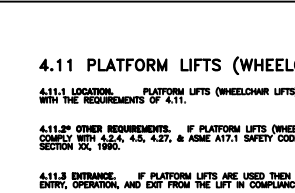
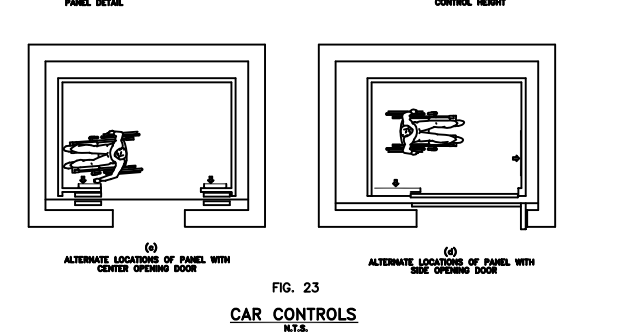
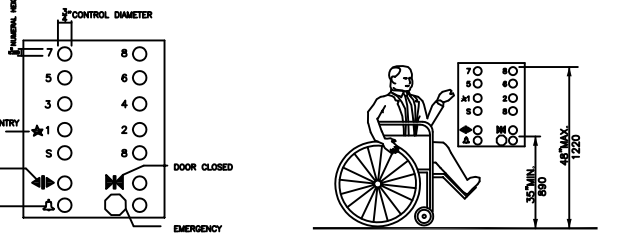
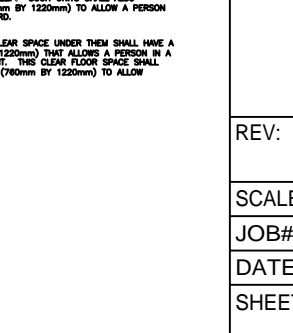
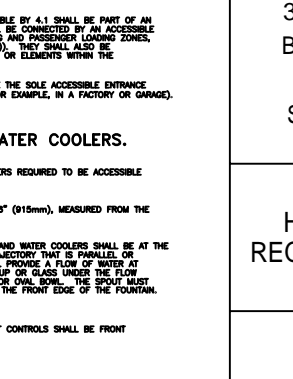
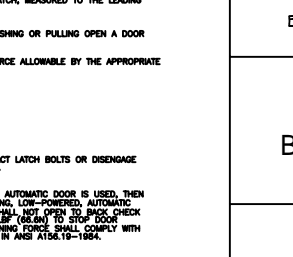
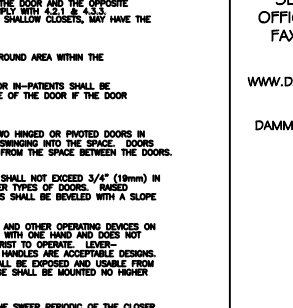
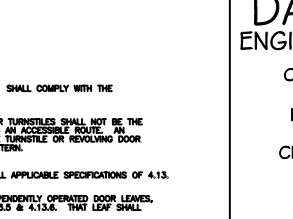
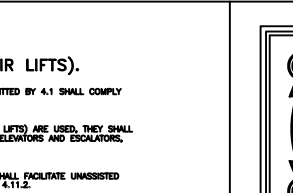
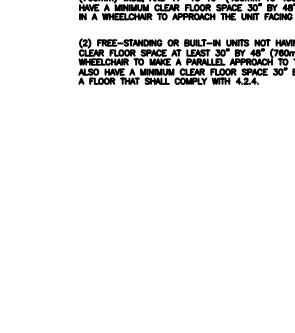
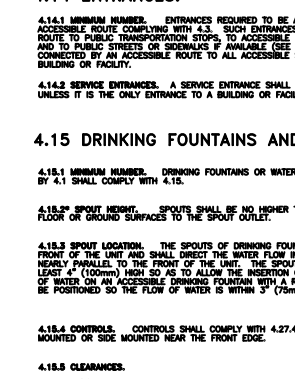
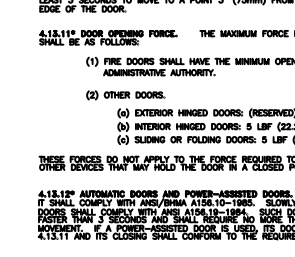
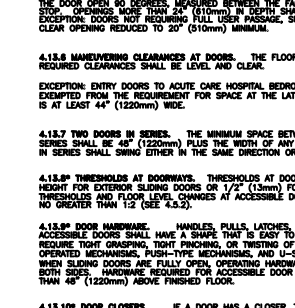
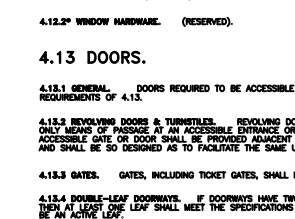
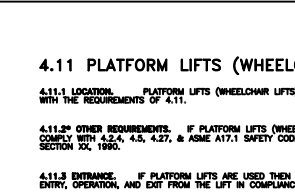
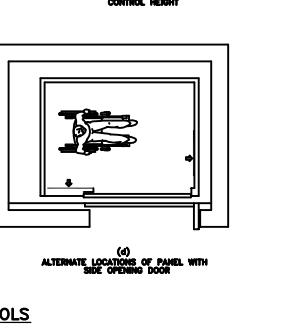
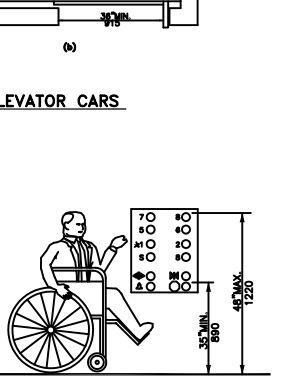
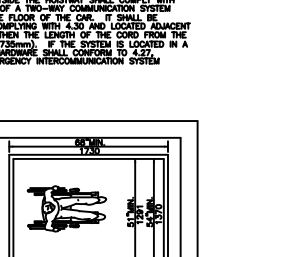
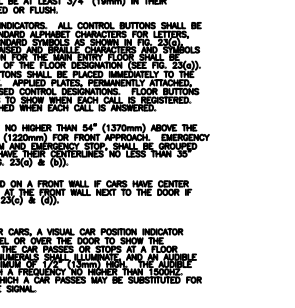
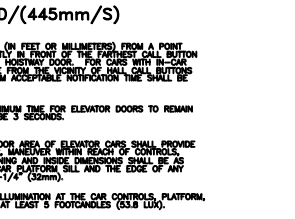
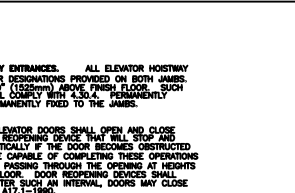
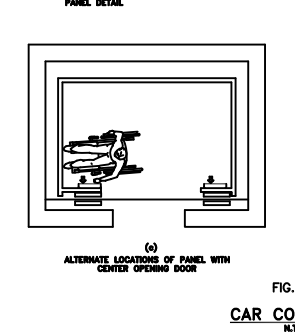
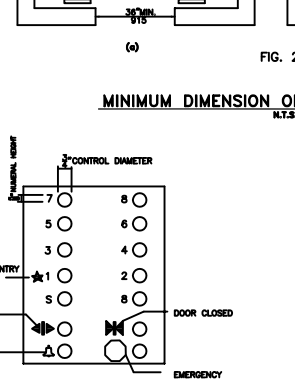
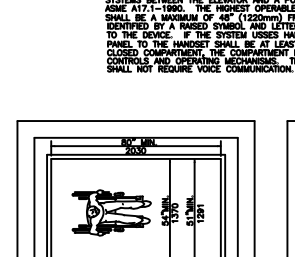
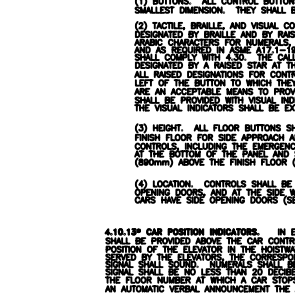
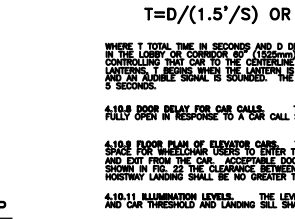
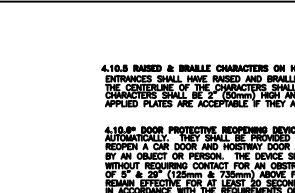
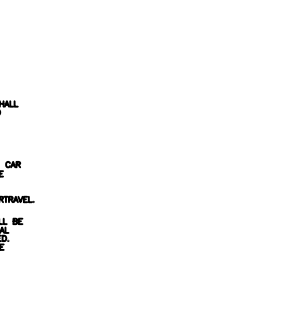
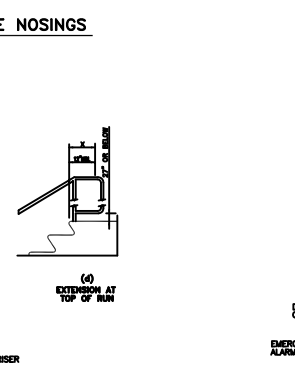
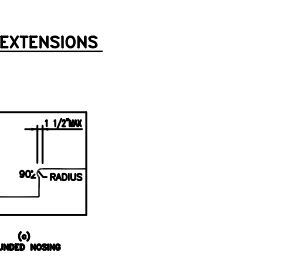
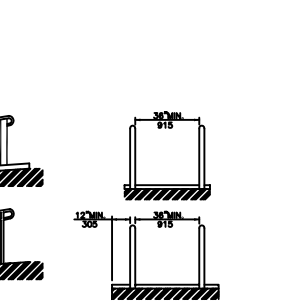
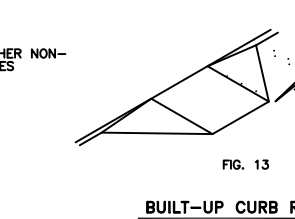
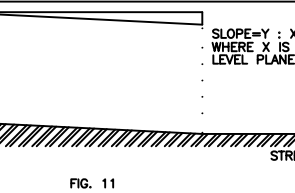
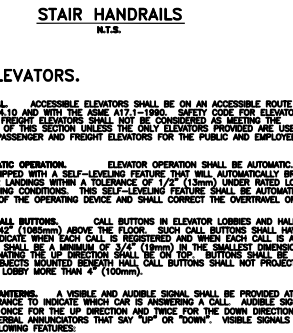
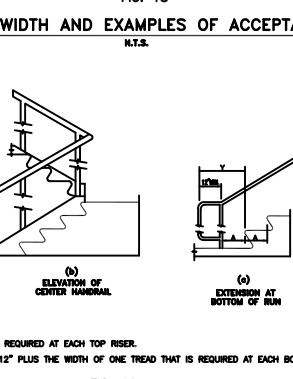
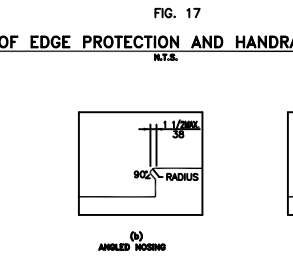
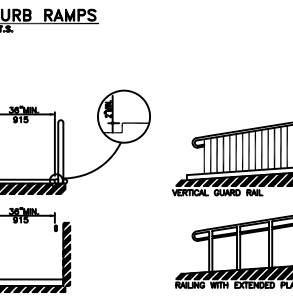
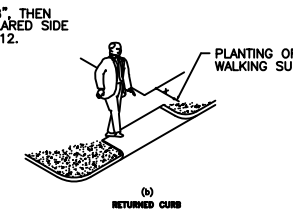
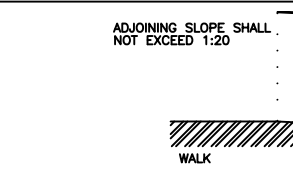
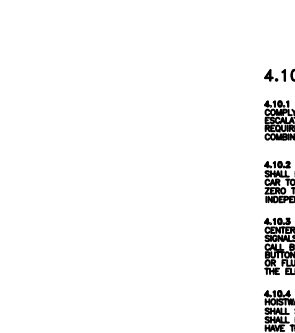
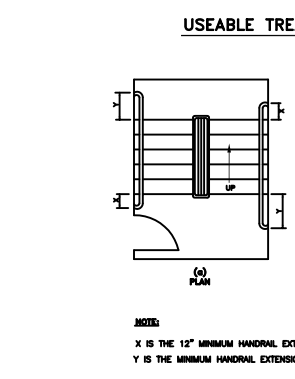
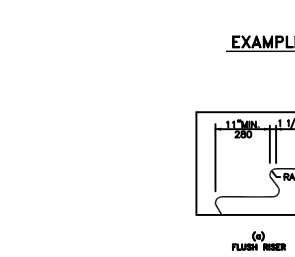
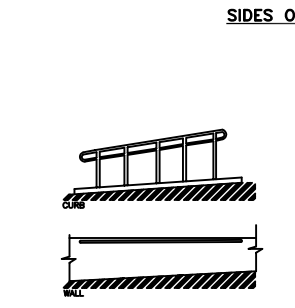
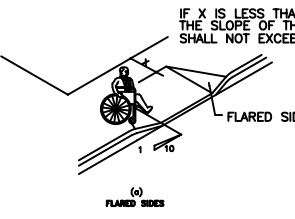
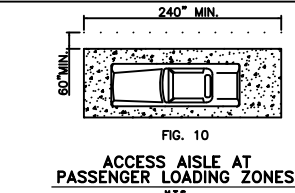
4.9.3 NOSINGS. THE UNDERSIDES OF NOSINGS SHALL NOT BE ABRUPT. THE RADIUS OF CURVATURE AT THE LEADING EDGE OF THE NOSING SHALL BE NO GREATER THAN 1/4" (6mm). RISERS SHALL BE 3/8" (9.5mm) OF THE THICKNESS OF THE NOSING SHALL HAVE AN ANGLE NOT LESS THAN 60 DEGREES FROM THE HORIZONTAL. NOSINGS SHALL PROJECT MORE THAN 1-1/2" (38mm) (SEE FIG. 18).

4.9.4 HANDRAILS. STAIRWAYS SHALL HAVE HANDRAILS AT BOTH SIDES OF ALL STAIRS. HANDRAILS SHALL COMPLY WITH 4.8 AND SHALL HAVE THE FOLLOWING FEATURES:

- (1) HANDRAILS SHALL BE CONTINUOUS ALONG BOTH SIDES OF STAIRS. THE INSIDE HANDRAIL ON SWITCHBACK OR DOGGED STAIRS SHALL ALWAYS BE CONTINUOUS (SEE FIG. 19(a) & (b)).
- (2) IF HANDRAILS ARE NOT CONTINUOUS, THEY SHALL EXTEND AT LEAST 12" (305mm) BEYOND THE TOP AND BOTTOM OF THE RAMP SEGMENT AND SHALL BE PARALLEL WITH THE FLOOR OR GROUND SURFACE. AT THE BOTTOM, THE HANDRAIL BOTTOM RAILING TO REMAIN AT THE EXTENSION OF THE RAMP SURFACE (SEE FIG. 19(c) & (d)). HANDRAIL EXTENSIONS SHALL COMPLY WITH 4.4.
- (3) THE CLEAR SPACE BETWEEN HANDRAILS AND WALLS SHALL BE 1-1/2" (38mm).
- (4) GRIPPING SURFACES SHALL BE UNINTERRUPTED BY NAIL POSTS, OTHER CONSTRUCTION ELEMENTS, OR OBSTRUCTIONS.
- (5) TOP OF HANDRAIL GRIPPING SURFACE SHALL BE MOUNTED BETWEEN 30" & 34" (760mm & 865mm) ABOVE STAIR NOSINGS.
- (6) ENDS OF HANDRAILS SHALL BE EITHER ROUNDED OR RETURNED SMOOTHLY TO FLOOR, WALL, OR POST.
- (7) HANDRAILS SHALL NOT ROTATE WITHIN THEIR FITTINGS.

4.9.5 TACTILE WARNINGS AT STAIRS. (REMOVED & RESERVED).

4.9.6 OUTDOOR CONDITIONS. OUTDOOR STAIRS AND THEIR APPROACHES SHALL BE DESIGNED SO THAT WATER WILL NOT ACCUMULATE ON WALKING SURFACES.



DAMMON
ENGINEERING, INC.

CHIEF ENGINEER
EMMETT
DAMMON, P.E.

CHIEF ARCHITECT
ROBERT
WILTSE

1095 FLORIDA AVENUE
SLIDELL, LA. 70458
OFFICE: 985-649-5832
FAX: 985-641-5950

WEBSITE:
WWW.DAMMONENGINEERING.COM

EMAIL:
DAMMONENG@Bellsouth.net

ARCHITECTURE
ENGINEERING
STUDIES
PLANNING
INVESTIGATION
EXPERT WITNESS

TENANT
BUILD-OUT

J D PLAZA
345 GAUSE
BOULEVARD
WEST
SLIDELL, LA

HANDICAP
REQUIREMENTS

REV:
SCALE: AS NOTED
JOB#: 2070
DATE: 6-25-10
SHEET 5

H-1
OF 10