

**DAMMON**  
ENGINEERING, INC.

CHIEF ENGINEER  
EMMETT  
DAMMON, P.E.

CHIEF ARCHITECT  
ROBERT  
WILTSE

1095 FLORIDA AVENUE  
SLIDELL, LA. 70458  
OFFICE: 985-649-5832  
FAX: 985-641-5950

WEBSITE:  
WWW.DAMMONENGINEERING.COM  
EMAIL:  
DAMMONENG@BELLSOUTH.NET

ARCHITECTURE  
ENGINEERING  
STUDIES  
PLANNING  
INVESTIGATION  
EXPERT WITNESS

TENANT  
BUILD-OUT

J D PLAZA  
345 GAUSE  
BOULEVARD  
WEST  
SLIDELL, LA

REFLECTED  
CEILING  
PLAN

REV:

SCALE: AS NOTED

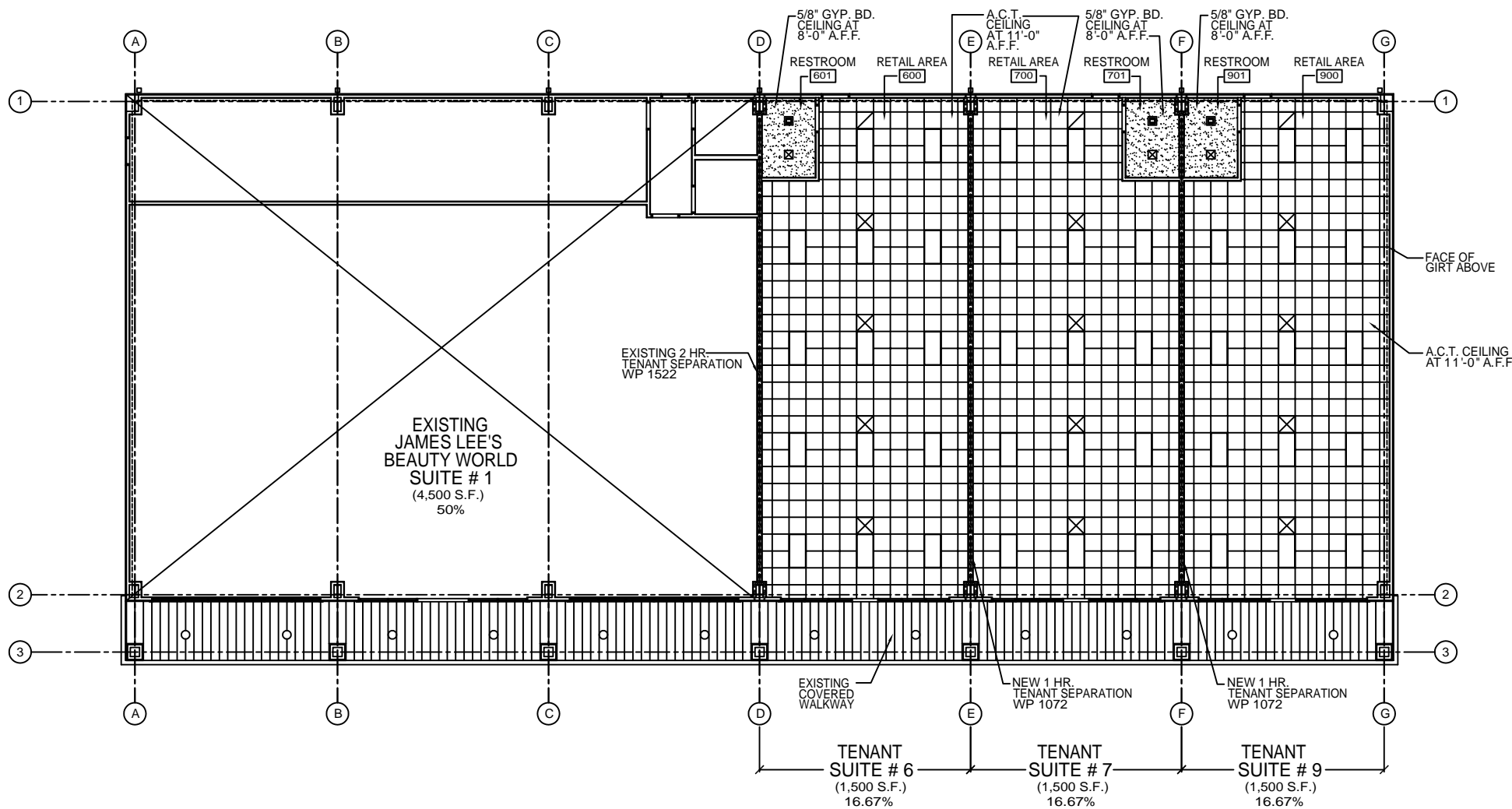
JOB#: 2070

DATE: 06-29-10

SHEET 4

**A-2**

OF 8



- LEGEND**
- 2'x4' FLUORESCENT LIGHT
  - EXHAUST FAN/LIGHT COMBO
  - SUPPLY AIR
  - RETURN AIR
  - A.C.T. CEILING GRID (2'x2')
  - GYPSUM BOARD CEILING

REFLECTED CEILING PLAN  
SCALE: 1/8"=1'

