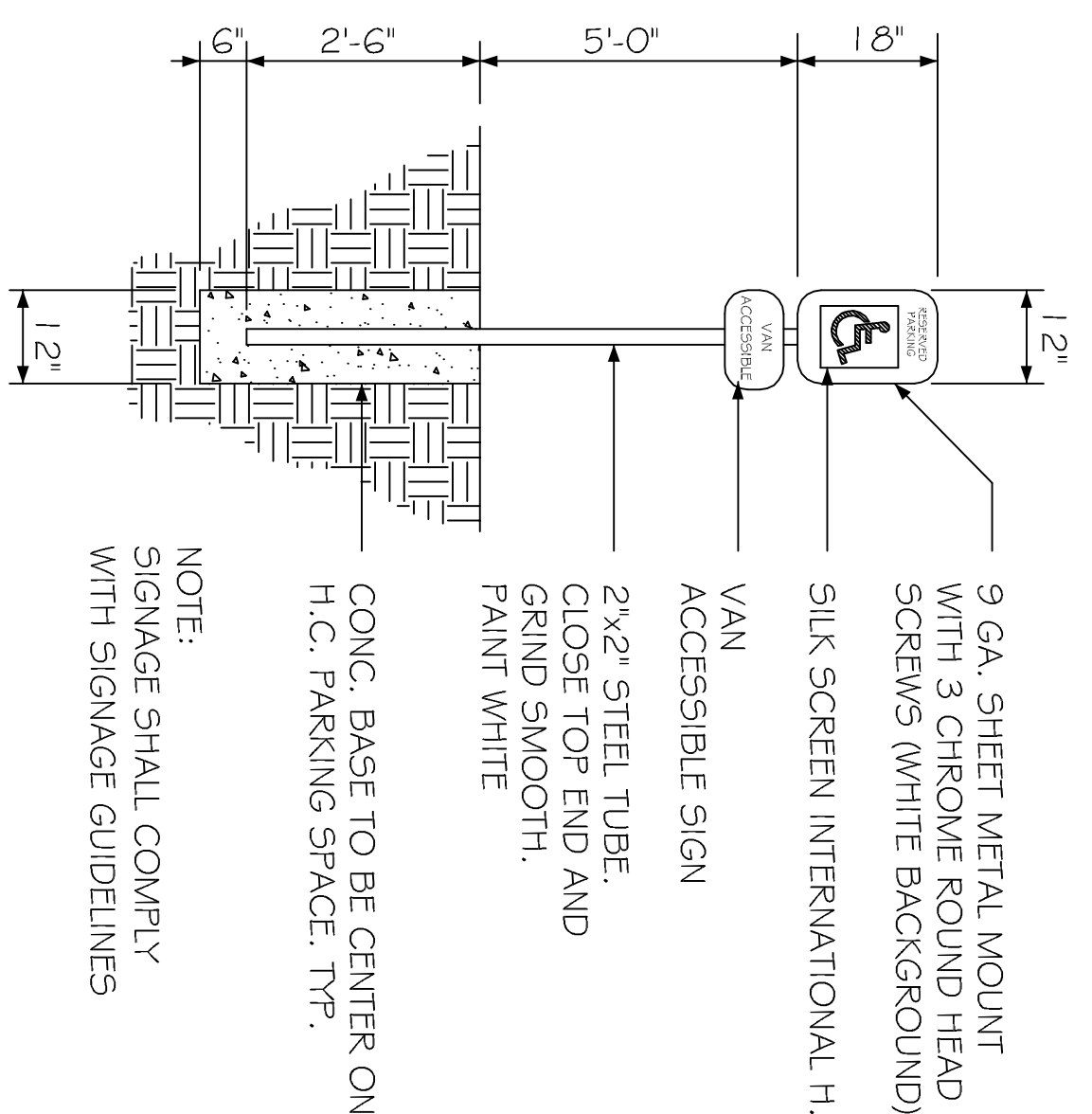


**SITE LEGEND**

- PROPERTY LINE
- BUILDING SETBACK MINIMUM
- BUILDING OUTLINE
- HANDICAP PARKING
- HANDICAP PARKING SIGN

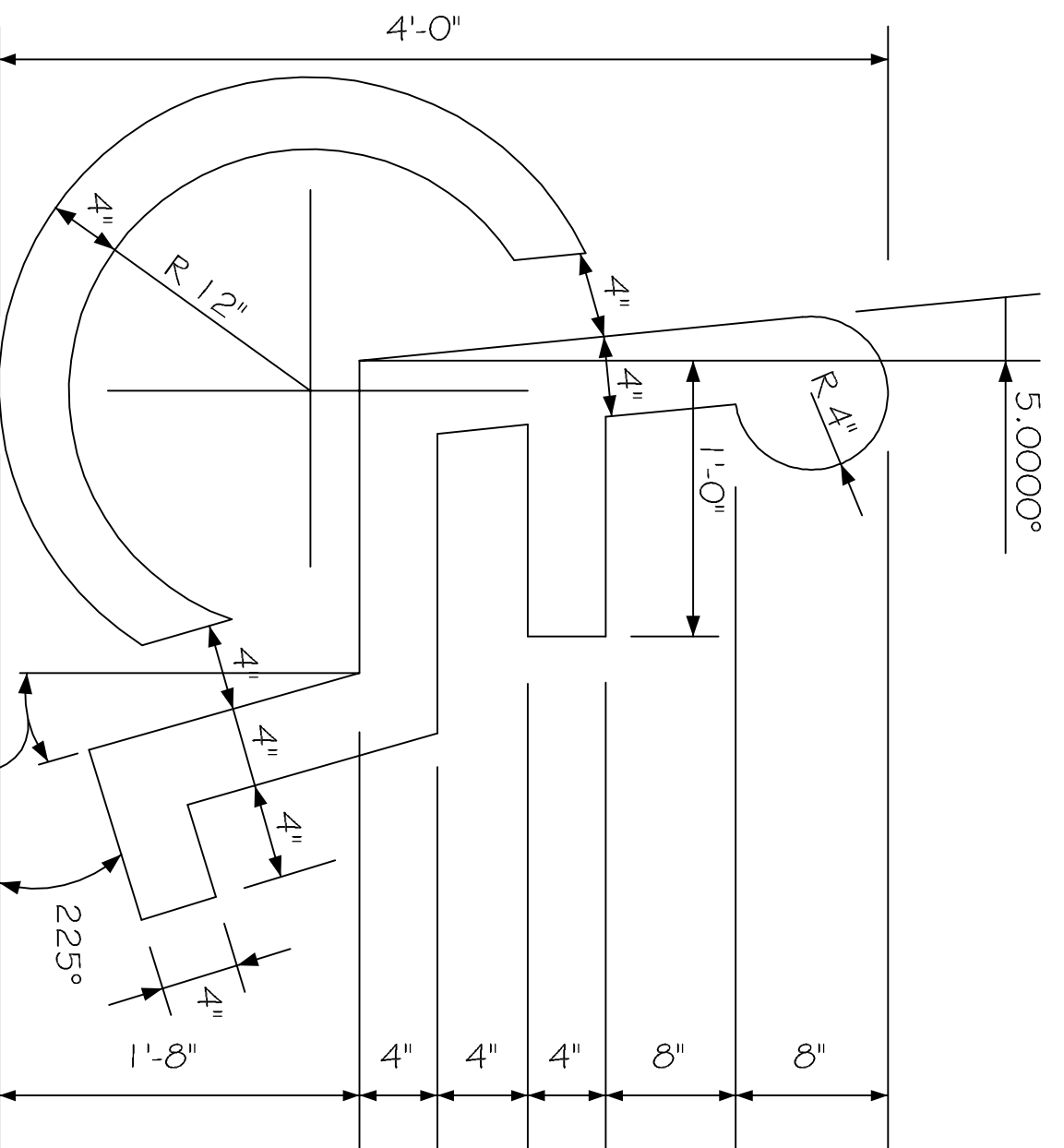
NOTE:  
PAVEMENT IN ALL PARKING AREAS SHALL BE 5" THICK CONCRETE.



**HANDICAP PARKING SIGN**

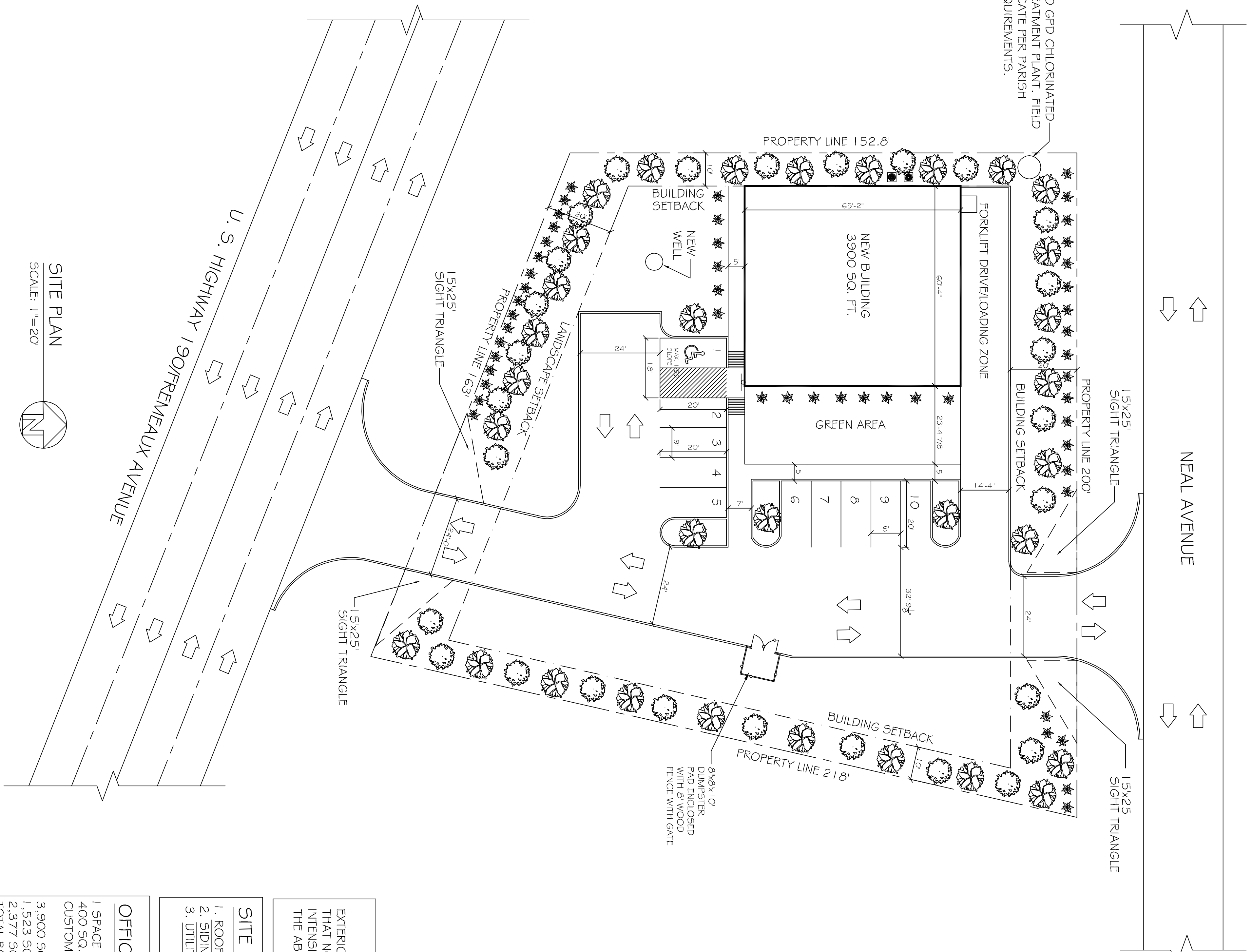
NOTE:  
SIGNAGE SHALL COMPLY WITH SIGNAGE GUIDELINES

N. T. S.



**HANDICAP SYMBOL DETAIL**

N. T. S.



**SITE PLAN**  
SCALE: 1"=20'

51. TAMMANY PARISH LANDSCAPE REQUIREMENTS:  
TREE AND ROOT PROTECTION STANDARDS:  
PROTECTIVE BARRIERS, TYPE REQUIRED, FROM TO GRADING, CONSTRUCTION OR OTHER LAND DISTURBING ACTIVITY. PROTECTIVE BARRIERS SHALL BE INSTALLED IN ACCORDANCE WITH THE FOLLOWING STANDARDS:  
1. PROTECTIVE BARRIERS SHALL BE LIMITED TO 10' TEMPORARY FENCING, THIS FENCING SHALL BE CONSTRUCTED FROM ANY HIGHLY VISIBLE MATERIAL SUBSTANTIAL ENOUGH TO PROTECT THE ROOTS, TRUNK AND CROWN OF THE TREES, SUCH AS SILT FENCING, ORANGE SAFETY FENCING AND WIRE FENCING.  
STREET PLANTING AREA:  
A STREET PLANTING AREA IS THE AREA ALONG THE STREET (OR STREETS) OR ROAD (OR ROADS) ALONG WHICH A PROPERTY ABUTS WHICH IS DESIGNATED FOR THE RESERVATION OF TREES AND FOR LANDSCAPING. IF A PROPERTY ABUTS ONE OR MORE STREETS OR ROADS, THE STREET PLANTING AREA SHALL BE 50 FEET WIDE. THE FOLLOWING MINIMUM AND SHRUBS SHALL BE PLANTED IN THE STREET PLANTING AREA: 1 CLASS A TREE FOR EVERY 25' OF STREET FRONTAGE, 1 CLASS B TREE FOR EVERY 25' OF STREET FRONTAGE, 1 SHRUB FOR EVERY 10 FEET OF STREET FRONTAGE.  
LA HWY 433 STREET PLANTING AREA: (1) 63 FEET OF ROAD FRONTAGE  
CLASS A TREES: 1 (63/25) = 6.52 (USE 7 CLASS A TREES)  
CLASS B TREES: 1 (63/25) = 6.52 (USE 7 CLASS B TREES)  
SHRUBS: 1 (63/10) = 17  
SIDE AND SEAP BUFFER PLANTING AREA REQUIREMENTS:  
BUFFER PLANTING AREA WIDTH SHALL BE A MINIMUM OF TEN FEET. TREES REQUIRED IF UNENCUMBERED BY UTILITY STRUCTURE: CLASS A TREES ONE (1) FOR EACH 30 LINEAR FEET OF THE BUFFER PLANTING AREA, AND CLASS B TREES ONE (1) FOR EACH 30 LINEAR FEET OF THE BUFFER PLANTING AREA.  
WEST BUFFER AREA: (1) 52 & LINEAR FEET  
CLASS A TREES: 1 (52/6.50) = 5.09 (USE 6 CLASS A TREES)  
CLASS B TREES: 1 (52/6.50) = 5.09 (USE 6 CLASS B TREES)  
EAST BUFFER AREA: (2) 18 LINEAR FEET  
CLASS A TREES: 2 (18/50) = 7.26 (USE 8 CLASS A TREES)  
CLASS B TREES: 2 (18/50) = 7.26 (USE 8 CLASS B TREES)  
CLASS A TREES: 200/30 = 6.6 (USE 7 CLASS A TREES)  
CLASS B TREES: 200/30 = 6.6 (USE 7 CLASS B TREES)  
BUILDING FACADE PLANTING AREA:  
THE BUILDING FACADE AREA SHALL BE LOCATED ALONG THE FULL LENGTH OF THE BUILDING EXTERIOR WALL(S) FACING THE VEHICULAR ACCESS AREAS). THIS AREA SHALL BE NO LESS THAN FOUR (4) FEET IN WIDTH.  
PARKING LANDSCAPING REQUIREMENTS:  
LOCATION OF SHRUBS WITHIN STREET PLANTING AREA, SHRUBS SHALL BE LOCATED WITHIN THE STREET PLANTING AREA AND NOT IN THE DRIVEWAY OR DRIVEWAY DRIVEWAY. SHRUBS SHALL BE PLANTED AT A MINIMUM OF 2 FEET APART OR CLOSER EXCEPT THAT IF SHRUBS ARE PLANTED IN CLUSTERS, THE CLUSTERS SHALL BE AT LEAST 2 FEET APART OR CLOSER. NO SHRUB SHALL BE PLANTED UNLESS IT WILL REACH THREE (3) FEET IN HEIGHT WITHIN TWO (2) YEARS AFTER PLANTING, AND, THEREAFTER, SHRUBS SHALL BE MAINTAINED AT THREE (3) FEET IN HEIGHT OR HIGHER.  
SPECIFIC INTERIOR PARKING LANDSCAPE REQUIREMENTS:  
LANDSCAPE ISLANDS WITHIN ROWS: NO MORE THAN TWELVE (12) PARKING SPACES SHALL BE PERMITTED IN A CONTINUOUS ROW WITHOUT BEING INTERRUPTED OR TERMINATED BY A LANDSCAPED ISLAND OR MEDIAN OF NOT LESS THAN SIX (6) FEET IN WIDTH (EXCLUSIVE OF CURBS) AND NOT LESS THAN THE LENGTH OF THE PARKING SPACE, BUT NOT LESS THAN NINE (9) FEET IN WIDTH (INCLUDING THE CURBS) AND NOT LESS THAN THE LENGTH OF THE PARKING SPACE; PROVIDED THAT, A LANDSCAPE ISLAND SHALL NOT BE REQUIRED AT THE END OF A PARKING ROW WHERE THE END OF THE PARKING ROW ABUTS A STREET PLANTING AREA OR BUFFER PLANTING AREA. REQUIRED PLANTS: THE LANDSCAPED ISLANDS SHALL CONTAIN A MINIMUM OF ONE (1) CLASS A TREE, ONE (1) CLASS B TREE FOR EVERY 30 LINEAR FEET SHALL BE PLANTED IN THE REQUIRED MEDIAN BETWEEN ROWS. THE SURFACE OF THE LANDSCAPED ISLANDS AND MEDIANS SHALL BE PLANTED IN A LIVING VEGETATIVE GROUND COVER.

**LANDSCAPE LEGEND**

- RED MAPLE  
CLASS A: ANY SELF-SUPPORTING WOODY PLANT OF A SPECIES WHICH NORMALLY GROWS TO AN OVERALL HEIGHT OF 25 FEET OR MORE AT MATURE. SPECIES MAY HAVE MULTIPLE TRUNKS, AND WITH MANY BRANCHES.
- ALL CLASS A TREES, AT THE TIME OF PLANTING, SHALL HAVE A MINIMUM CALIPER OF AT LEAST TWO (2) INCHES, AND A MINIMUM HEIGHT OF 10 TO 12 FEET, AS PER THE NATIONAL NURSERY ASSOCIATION STANDARDS.
- CREPE MYRTLE  
CLASS B: ANY SELF-SUPPORTING WOODY PLANT OF A SPECIES WHICH NORMALLY GROWS TO AN OVERALL HEIGHT OF 25 FEET OR MORE AT MATURE. SPECIES MAY HAVE MULTIPLE TRUNKS, AND WITH MANY BRANCHES.
- ALL CLASS B TREES, AT THE TIME OF PLANTING, SHALL HAVE A MINIMUM CALIPER OF AT LEAST ONE (1) INCH, AND A MINIMUM HEIGHT OF 6 TO 10 FEET, AS PER THE NATIONAL NURSERY ASSOCIATION STANDARDS.
- INDIAN HAWTHORNE  
SHRUB: A RELATIVELY LOW-GROWING BUSHY PLANT, USUALLY WITH WOODY STEMS, FOR THE PURPOSES OF THIS DEFINITION. GROUND COVER, TREES AND ANNUALS ARE NOT CONSIDERED SHRUBS.
- ALL SHRUBS, AT THE TIME OF PLANTING, SHALL HAVE A MINIMUM HEIGHT OF TWO (2) FEET.
- ASIAN JASMINE GROUND COVER
- GRASS 500

**SITE LIGHTING**  
EXTERIOR LIGHTING SHALL BE SHADED OR INWARDLY DIRECTED IN SUCH A MANNER SO THAT NO DIRECT LIGHTING OR GLARE BE CAST BEYOND THE PROPERTY LINE. THE INTENSITY OF SUCH LIGHTING SHALL NOT EXCEED ONE FOOT CANDLE AS MEASURED AT THE ABUTTING PROPERTY LINE. (N/A FOR THIS PARTICULAR JOB)

**SITE PLAN NOTES**

1. ROOFING MATERIAL: METAL ROOFING PANEL
2. SIDING MATERIAL: CONVENTIONAL STUCCO VENEER & METAL PANELS.
3. UTILITIES: ALL UTILITIES SHALL BE PLACED UNDERGROUND

**OFFICEWAREHOUSE PARKING REQUIREMENTS**

1 SPACE PER EACH 700 SQ. FT. OF STORAGE AREA PLUS 1 SPACE PER EACH 400 SQ. FT. OF OFFICE, SALES OR OTHER SPACE TO BE USED BY VISITORS, CUSTOMERS OR SALESMEN.

3,900 SQ. FT. BUILDING TOTAL  
1,523 SQ. FT. WAREHOUSE = 2 PARKING SPACES  
2,377 SQ. FT. OF SALES = 6 PARKING SPACES  
TOTAL PARKING PROVIDED = 10 INCLUDING 1 HANDICAP

REVISIONS	DATE	DESCRIPTION
#		

**RAY HORVATH  
FLOORWORKS AND BLINDS**  
RETAIL  
1360 SHORTCUT ROAD  
SLIDELL, LA 70455

JOB No: 2152 DATE: 11-13-12  
DRAWN BY: BSN CHECKED BY: BSN

**DAMMON  
ENGINEERING, INC.**  
Architects & Engineers

CHIEF ENGINEER, EMMETT DAMMON, P.E.  
CHIEF ARCHITECT, ROBERT WILTSE  
554 OLD SPANISH TRAIL  
SLIDELL, LA 70456

dammoneengineering.com  
dammonega@bellsouth.net  
PHONE: 985-649-5832  
FAX: 985-641-15950