

**IBC 2012 SUMMARY**

OCCUPANCY CLASSIFICATION:  
 BUSINESS, GROUP B (SEC 304.1)  
 WAREHOUSE STORAGE, GROUP S-1 (SEC 311.2)

OCCUPANT LOAD: (TBL 1004.1.1)  
 BUSINESS AREAS = 100 GROSS SQ.FT. / OCCUPANT  
 WAREHOUSE AREAS = 500 GROSS SQ. FT. / OCCUPANT  
 2412 S.F. OFFICE = 24.12 OCCUPANTS  
 1281 S.F. WAREHOUSE = 14.56 OCCUPANTS  
 4642 S.F. GROSS BUILDING  
 TOTAL 39.68 OCCUPANTS

EXIT ACCESS REQUIREMENTS: (SEC 1015)  
 1 EXIT REQUIRED FOR 49 OCCUPANTS IN BUSINESS OCCUPANCY (2 EXITS PROVIDED)  
 1 EXIT REQUIRED FOR 29 OCCUPANTS IN STORAGE OCCUPANCY (2 EXITS EXISTING)

EXIT TRAVEL DISTANCE REQUIREMENTS: (SEC 1016)  
 BUSINESS EXIT ACCESS TRAVEL DISTANCE = 200' UNSPRINKLED  
 WAREHOUSE EXIT ACCESS TRAVEL DISTANCE = 200' UNSPRINKLED

ALLOWABLE HEIGHT AND BLDG. AREA: (TBL 503)  
 B=23,000 SQ.FT. / 3 STORY ALLOWED, THIS PROJECT 1 STORY / 9,642 SQ.FT.

CONSTRUCTION CLASSIFICATION: (SEC 602.2)  
 TYPE II B

FIRE RESISTANCE RATING REQUIREMENTS FOR BLDG. ELEMENTS: (TBL 601)  
 STRUCTURAL FRAME= 0 HRS.  
 BEARING WALLS (INTERIOR AND EXTERIOR)= 0 HRS.  
 NON-BEARING WALLS= 0 HRS.  
 FLOOR CONSTRUCTION= 0 HRS.  
 ROOF CONSTRUCTION= 0 HRS.

FIRE ALARM SYSTEM REQUIREMENTS: (SEC 907)  
 THIS BLDG. DOES NOT REQUIRE A FIRE ALARM SYSTEM

FIRE PROTECTION SYSTEM REQUIREMENTS: (SEC 903)  
 THIS BLDG. DOES NOT REQUIRE A FIRE PROTECTION SYSTEM IN ACCORDANCE WITH SEC 903.2.8

CONSTRUCTION DOCUMENTS: (SEC 1603)  
 THIS BLDG. SHALL BE DESIGNED IN ACCORDANCE WITH IBC SECTION 1609 AS A FULLY ENCLOSED BLDG. USING THE FOLLOWING INFORMATION:

WIND DESIGN DATA:  
 DETERMINATION OF WIND LOADS SHALL BE IN ACCORDANCE WITH IBC SEC 1609.4  
 BASIC WIND SPEED (3 SECOND GUSTS) = 130 MPH (FIG 1609)  
 IMPORTANCE FACTOR: CATEGORY II BLDG., IE =1.00, IS =1.0, IW =1.00 (TBL 1604.5)  
 EXPOSURE B  
 DESIGN WIND PRESSURE (ASCE 7-05 FIG. 6-2): 33.6 PSF  
 INTERNAL PRESSURE COEFFICIENT (ASCE 7-05 FIG. 6-5): ± 0.18  
 LIVE LOADS: (SEC 1607)  
 LOBBIES AND 1st FLR. CORRIDOR (TBL. 1607.1): 100 PSF  
 OFFICE (TBL. 1607.1): 50 PSF  
 ROOF LIVE LOAD (TBL. 1607.1) = 20 PSF UNIFORM, 300 LB. CONCENTRATED  
 GROUND SNOW LOAD (FIG. 1608.2) = 5 PSF

**NFPA 101 2012 SUMMARY**

BUILDING AREA:  
 TOTAL BUILDING AREA = 9,642 SQ.FT.

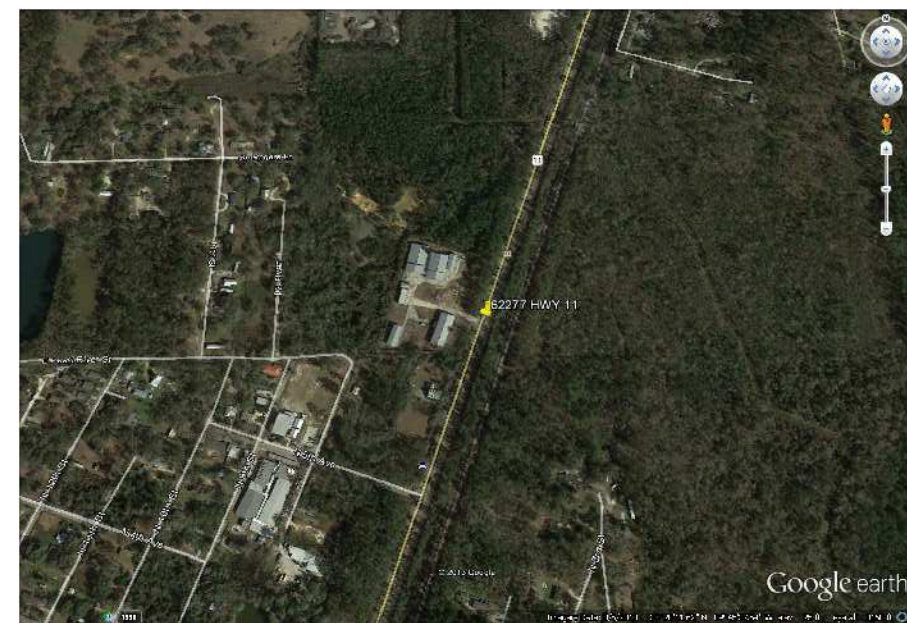
OCCUPANCY CLASSIFICATION:  
 BUSINESS, GROUP B  
 WAREHOUSE STORAGE, LOW HAZARD

OCCUPANT LOAD: (TBL T.3.1.2)  
 BUSINESS = 100 GROSS SQ.FT. / OCCUPANT = 2,412 / 100 = 25 OCCUPANTS  
 WAREHOUSE = 500 GROSS SQ.FT./ OCCUPANT = 1281/500 = 15 OCCUPANTS  
 TOTAL 39 OCCUPANTS

SPRINKLER SYSTEM: (SEC 30.2.5)  
 THIS BUILDING SHALL NOT BE REQUIRED TO HAVE AN AUTOMATIC SPRINKLER SYSTEM AT THIS TIME.

FIRE ALARM SYSTEM: (SEC 30.3.4.1)  
 A FIRE ALARM SYSTEM IS NOT REQUIRED.

EXIT ACCESS:  
 1 EXITS REQUIRED (SEC 30.2.4.3)  
 2 EXITS PROVIDED  
 ALLOWABLE EXIT ACCESS TRAVEL DISTANCE = 200' ( SEC 30.2.6.2)  
 LONGEST EGRESS PATH IN AREA OF WORK = 48'-1"

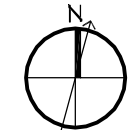
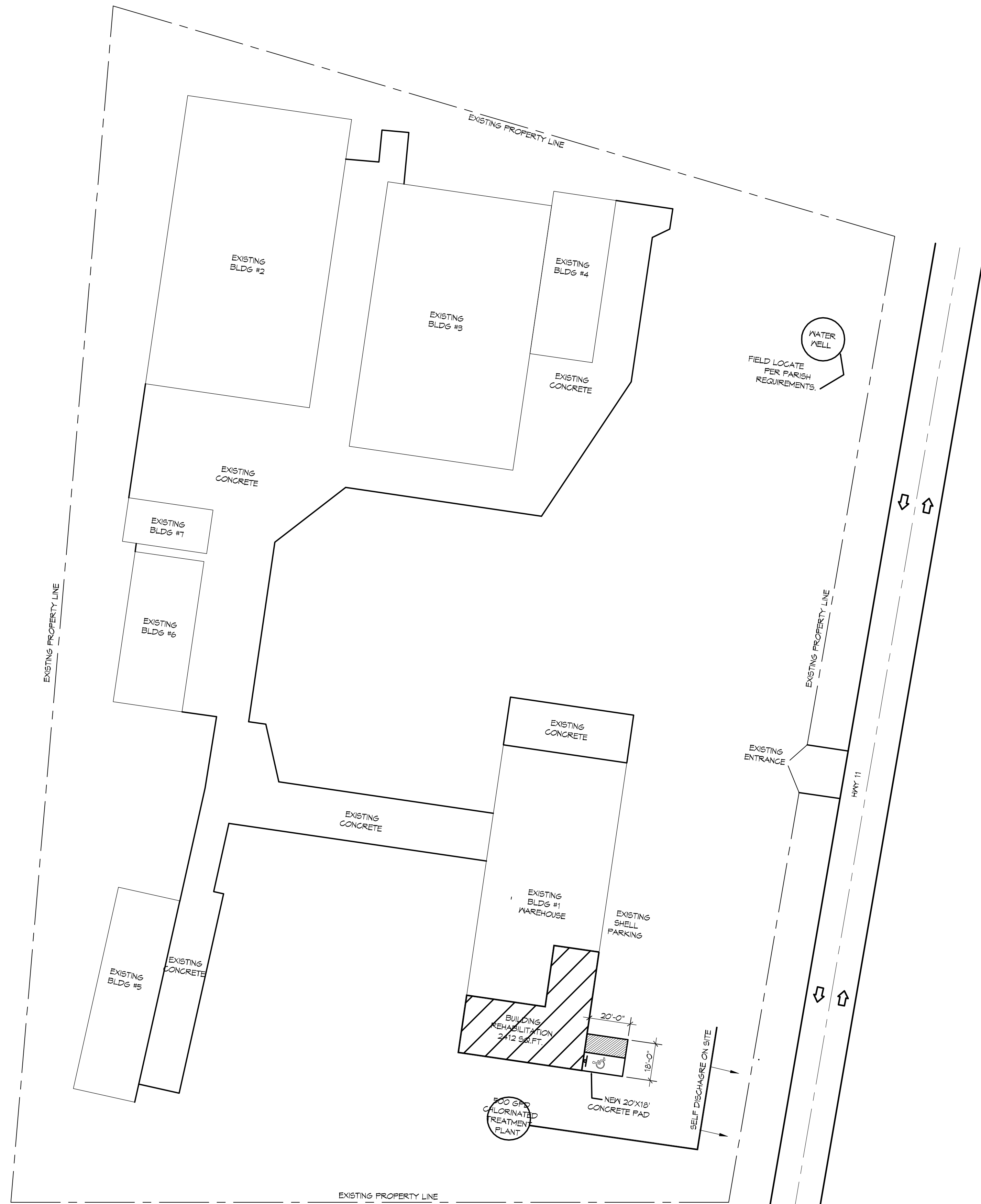


AREA OF WORK

VICINITY MAP  
 N.T.S.



INDEX OF DRAWINGS			
SHT#	DWG#	DRAWING NAME	REVISED
1	C-1	INDEX / SITE PLAN	
2	A-1	FLOOR PLAN	
3	A-2	REFLECTED CEILING PLAN	
4	P/M-1	PLUMBING & MECHANICAL PLAN	
5	E-1	POWER AND LIGHTING PLAN	



**1 SITE PLAN**  
 SCALE: 1" = 32'

**DAMMON ENGINEERING, INC.**  
*Architects & Engineers*  
 www.dammonengineering.com  
 dammoneng@bellsouth.net  
 Chief Architect: Kevin J. Kinchen, NCAAB  
 Chief Engineer: Brian M. Mitch, PE  
 554 Old Spanish Trail  
 Slidell, LA 70688  
 P: 985.641.5950  
 F: 985.641.5950

#	DESCRIPTION	DATE

SEAL:  
  
 2/6/2014

NEW OFFICES:  
**STAN ELMORE**  
 62277 HWY 11  
 SLIDELL, LOUISIANA  
 JOB No: 2195 | DATE: 01.14.2014  
 DRAWN BY: KJK | CHECKED BY: CKD

SHEET TITLE:  
 INDEX / SITE PLAN  
 DRAWING NUMBER:  
**C1**  
 SHEET No: 01 of 05