

NEW OFFICE / WAREHOUSE
AMERICAN TRADESHOW SERVICES

LOTS 4 & 5, NORTHSORE COMMERCIAL PARK

GENERAL PATTON AVENUE

ST. TAMMANY PARISH, LOUISIANA

RATLIFF
 ARCHITECTS

814 MARINER'S PLAZA DRIVE
 MANDEVILLE, LOUISIANA
 (985) 626-5236

PROJECT INFORMATION:

OCCUPANY CLASSIFICATION:

IBC - BUSINESS, GROUP B
 NFPA 101 - BUSINESS, CH. 38

TYPE OF CONSTRUCTION:

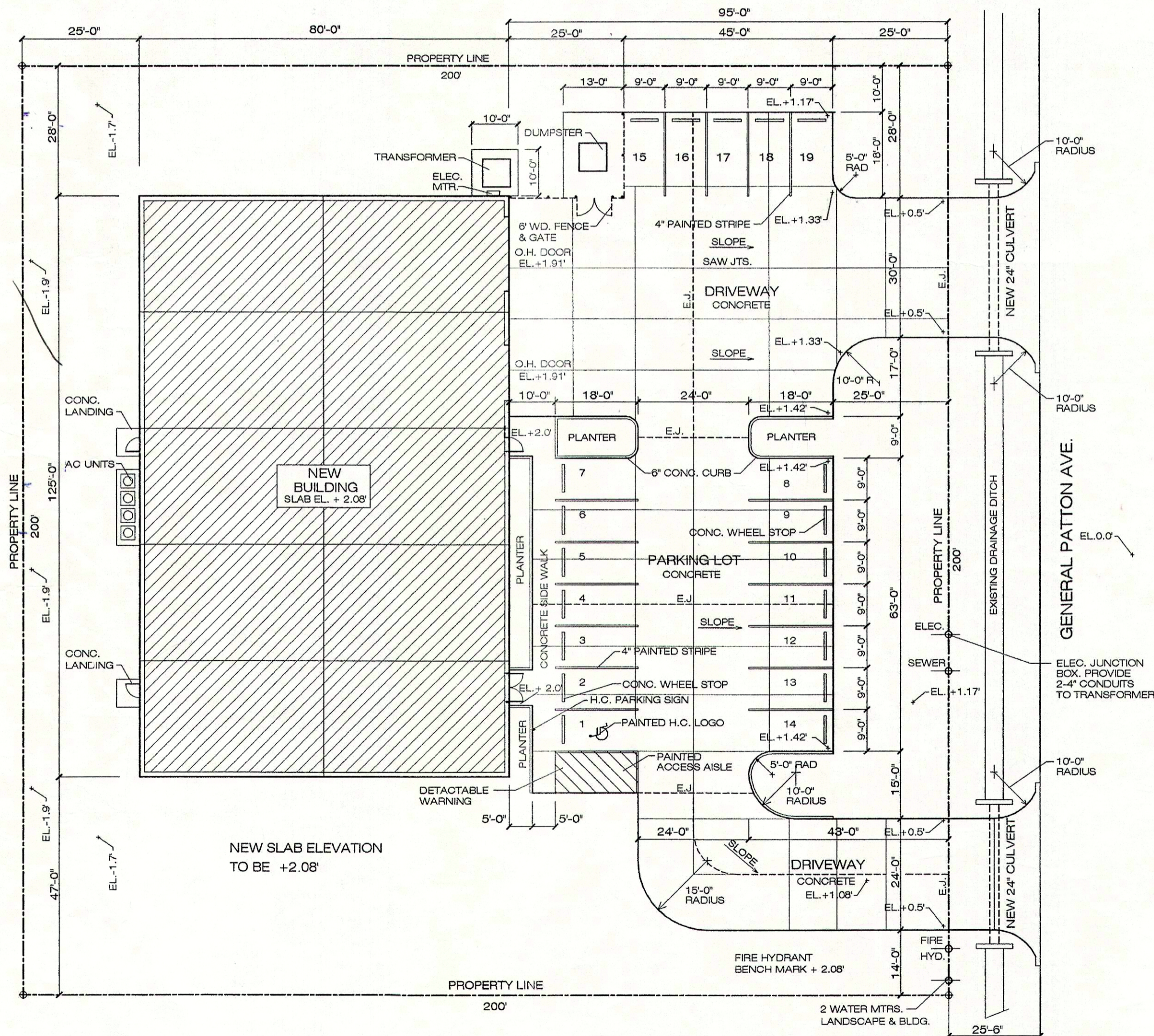
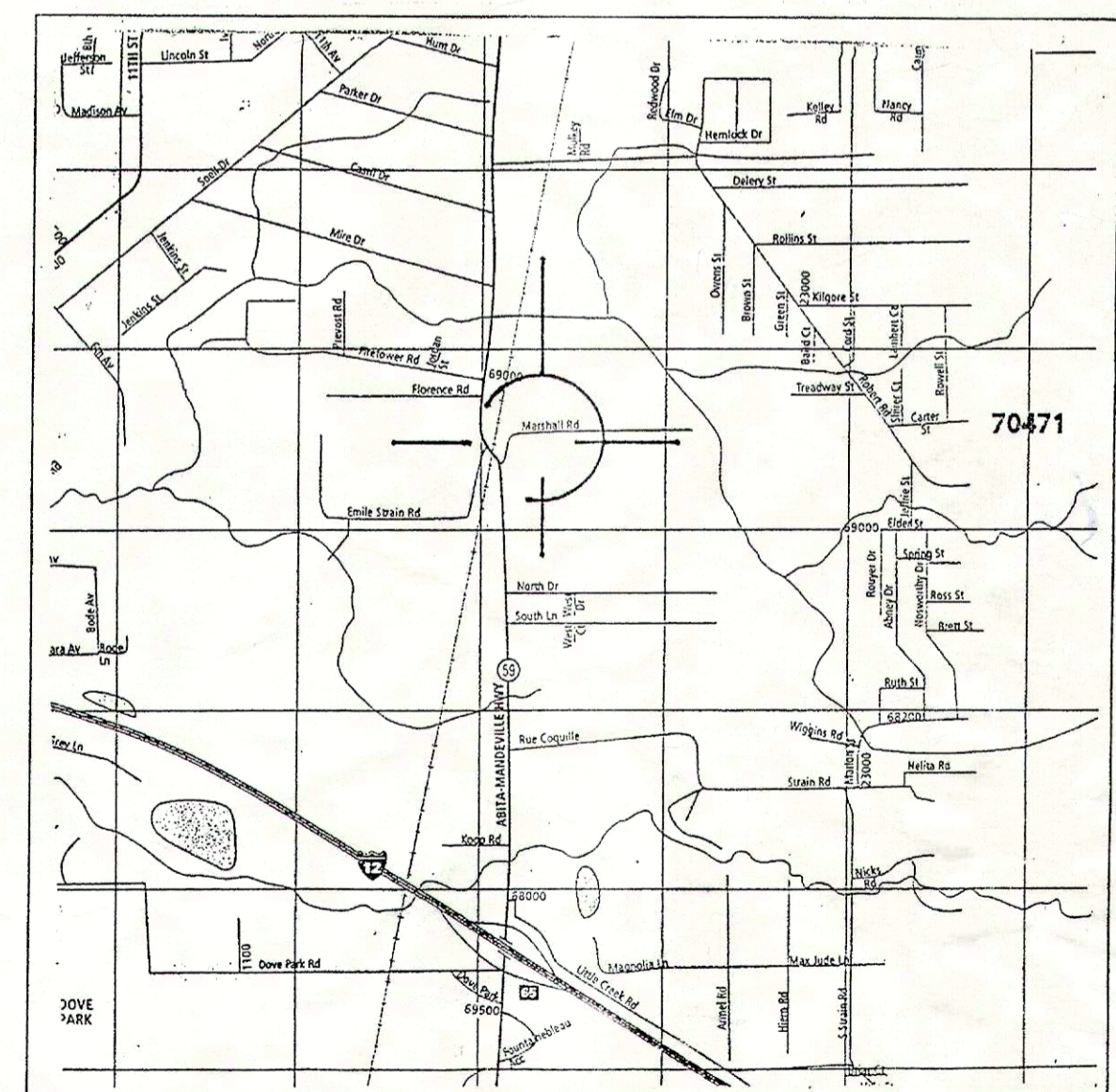
IBC - TYPE III

SQUARE FOOTAGE:

OFFICE AREA 5,200 S.F.
 WAREHOUSE AREA 4,800 S.F.
 TOTAL AREA 10,000 S.F.

INDEX OF DRAWINGS:

- A-1 TITLE SHEET / SITE PLAN
- A-2 DRAINAGE / LANDSCAPE PLAN
- A-3 FLOOR PLAN
- A-4 ELEVATIONS
- A-5 ELEVATIONS
- A-6 BUILDING SECTIONS
- A-7 WALL SECTIONS, RESTROOM DETAILS
- A-8 CEILING PLAN
- A-9 MECHANICAL PLAN
- A-10 ELECTRICAL PLAN



2 SITE PLAN
 A1 SCALE 1" = 20'-0"

1 VICINITY MAP
 A1 SCALE N. T. S.

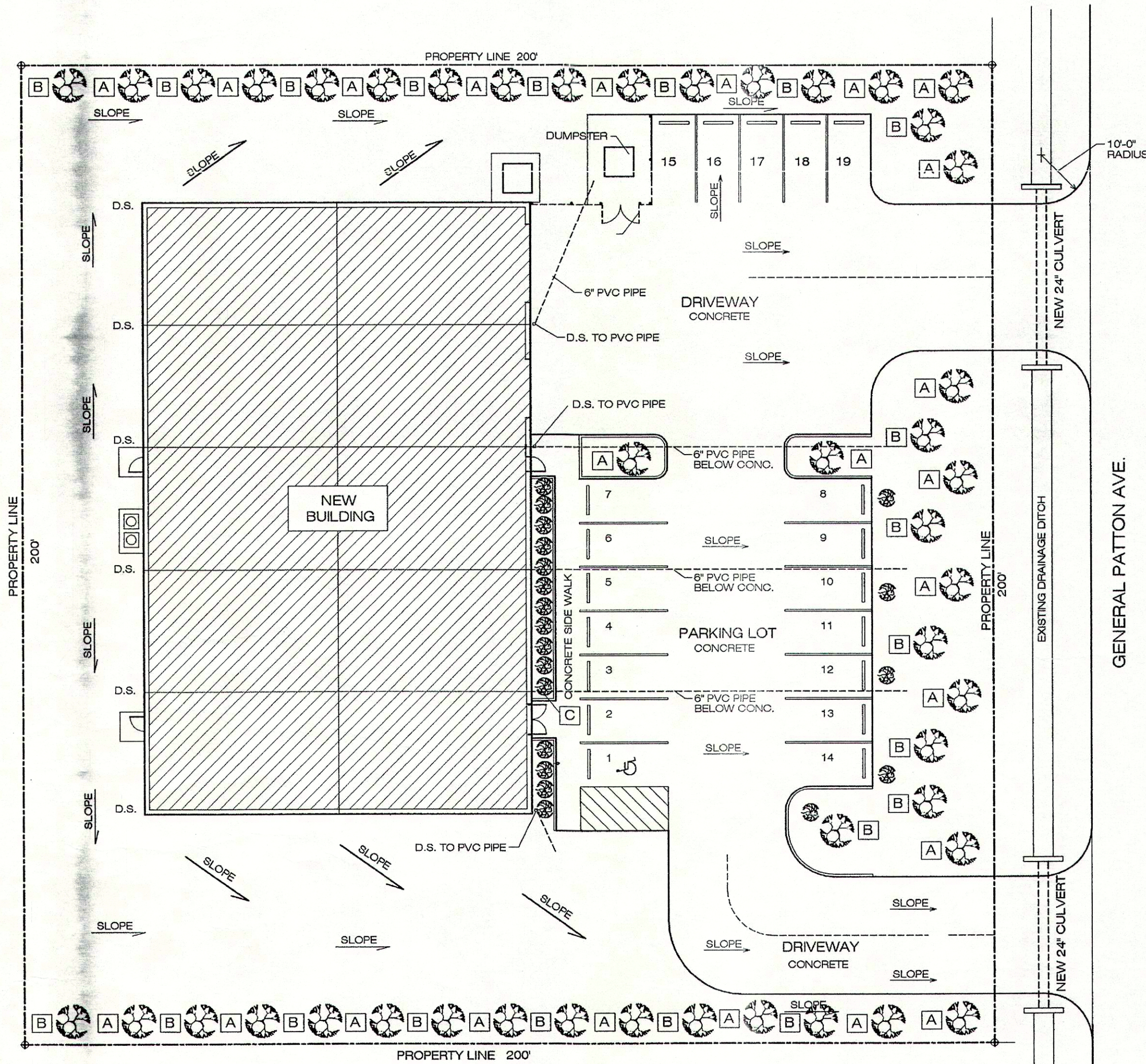
NEW OFFICE / WAREHOUSE
 AMERICAN TRADESHOW SERVICES
 LOTS 4 & 5, NORTHSORE COMMERCIAL PARK
 ST. TAMMANY PARISH, LOUISIANA

JULY 30, 2007
 JOB # 07-07

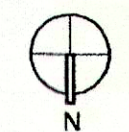
SHEET:

A-1

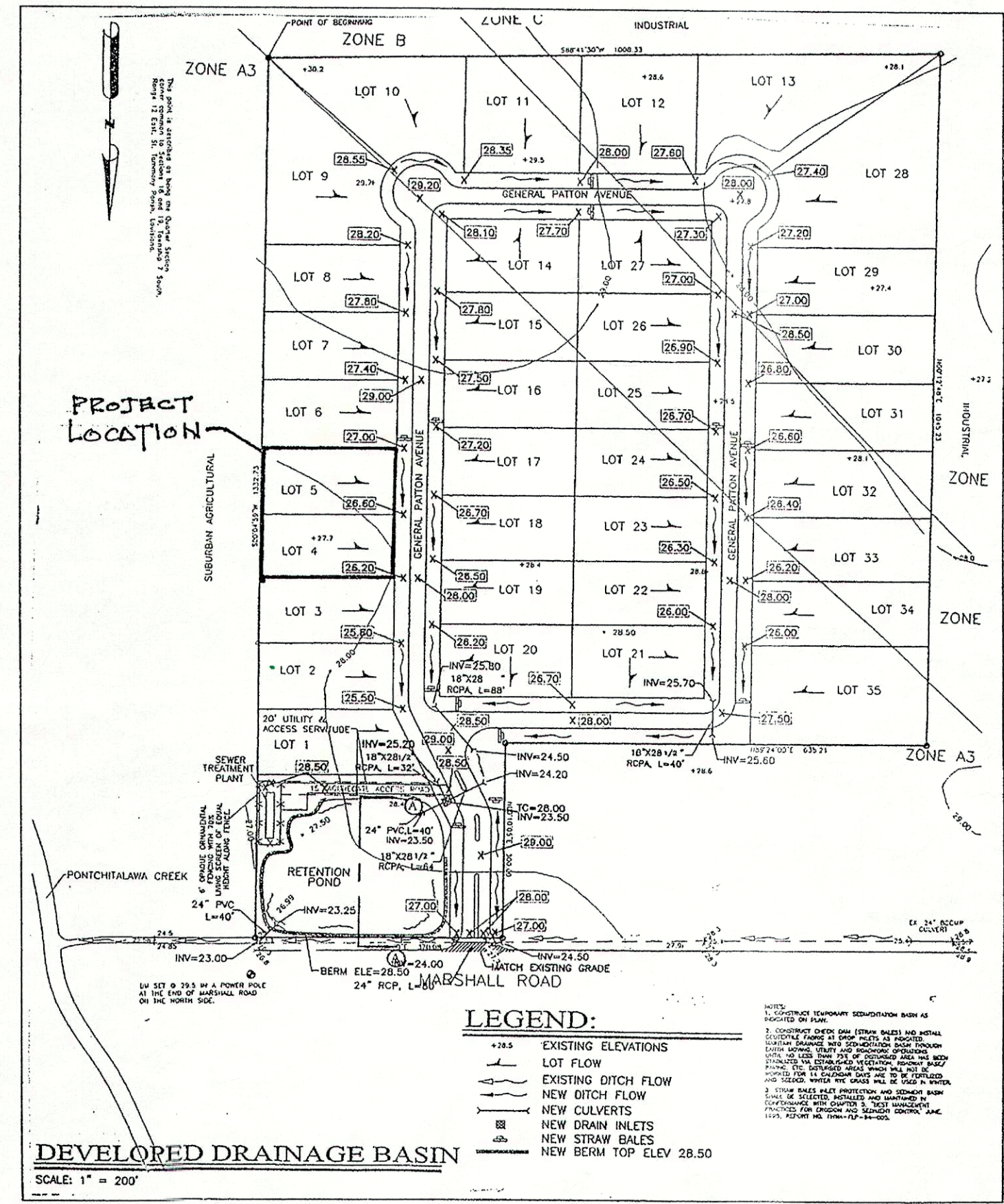
1 OF 10



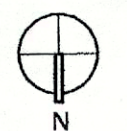
- A NEW CLASS A TREE - 7 PER SIDE
2 1/2" DIA TRUNK
- B NEW CLASS B TREE - 7 PER SIDE
1 1/2" DIA TRUNK
- C NEW SHRUBS TO BE A MIN. OF 24" HEIGHT
W/ MULCHED BEDS
TOTAL OF 20 FRONT SIDE.



1 LANDSCAPE AND DRAINAGE PLAN
SCALE 1" = 20'-0"



DEVELOPED DRAINAGE BASIN
SCALE: 1" = 200'



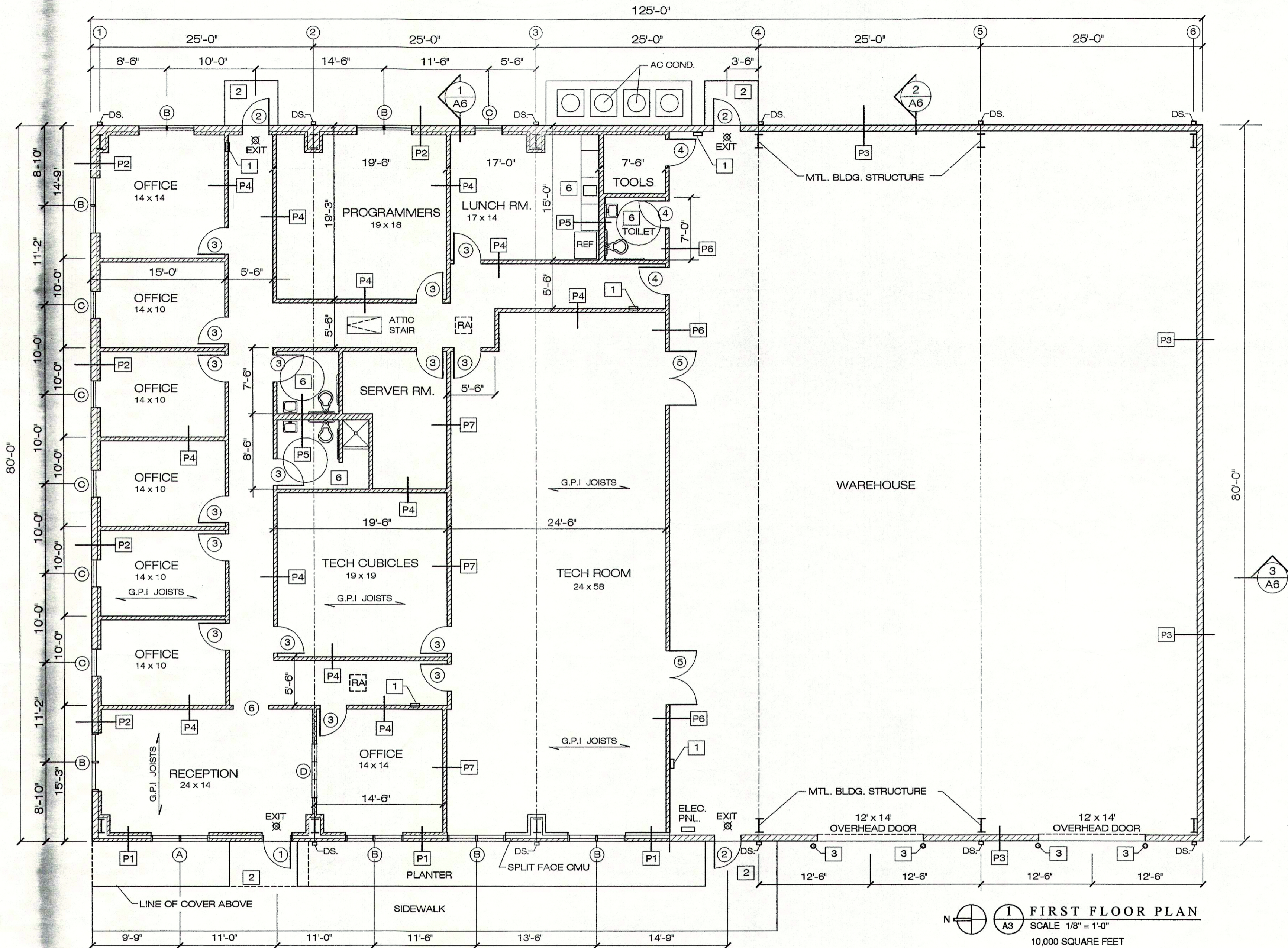
2 COMPLEX DRAINAGE PLAN
SCALE 1" = 100'-0"

RATLIFF ARCHITECTS
814 MARINER'S PLAZA DRIVE
MANDEVILLE, LOUISIANA
(985) 626-5236

NEW OFFICE / WAREHOUSE
AMERICAN TRADESHOW SERVICES
LOTS 4 & 5, NORTHSORE COMMERCIAL PARK
ST. TAMMANY PARISH, LOUISIANA

MAY. 8 2007
JOB # 03-07

SHEET:
A-2
2 OF 10



1 FIRST FLOOR PLAN
SCALE 1/8" = 1'-0"
10,000 SQUARE FEET

PARTITION TYPES:

- P1 EXTERIOR WALLS OF BUILDING: METAL BUILDING FRAME WITH SPLIT FACE CONCRETE BLOCK. 2x6 WD STUDS @ 16" O.C. W/ BATT INSULATION R-19, VAPOR BARRIER. 5/8" GYPSUM BOARD, TAPE, FLOAT AND PAINT.
- P2 EXTERIOR WALLS OF BUILDING: METAL BUILDING FRAME WITH METAL WALL PANELS. 2x6 WD STUDS @ 16" O.C. W/ BATT INSULATION R-19, VAPOR BARRIER. 5/8" GYPSUM BOARD, TAPE, FLOAT AND PAINT.
- P3 EXTERIOR WALLS OF BUILDING: METAL BUILDING FRAME WITH METAL WALL PANELS.
- P4 2x4 WD. STUDS @ 16" O.C. W/ ONE LAYER OF 5/8" GYPSUM BD. EA. SIDE TO CLG.
- P5 2x6 STUDS @ 16" O.C. W/ ONE LAYER OF 5/8" WATER RESISTANT GYPSUM BD. EA. SIDE TO CEILING.
- P6 2x6 WD. STUDS @ 16" O.C. W/ ONE LAYER OF 5/8" GYPSUM BD. EA. SIDE TO ROOF DECK. 1 HR. RATED UL. DES. U305.
- P7 2x6 WD. STUDS @ 16" O.C. W/ ONE LAYER OF 5/8" GYPSUM BD. EA. SIDE;

SPECIFIC NOTES:

- 1 PROVIDE FIRE EXTINGUISHER ON BRACKET HOLDER 2A10 BC @ 60" A.F.F TO TOP.
- 2 LANDING LEVEL W/ FLOOR SLAB.
- 3 6" DIA. PIPE BOLLARD FILLED W/ CONC.
- 4 CONTRACTOR TO SIZE AND PROVIDE HVAC UNIT. SEE A-9
- 5 PULL DOWN ATTIC STAIR
- 6 SEE SHEET A-7 FOR RESTROOM AND CABINET DETAILS

DOOR SCHEDULE

- 1 PR. 3'-0" x 7'-4" EXTERIOR METAL / GLASS DOORS. STORE FRONT SYSTEM.
- 2 3'-0" x 7'-0" EXTERIOR METAL DOORS W/ PANIC DEVICE
- 3 3'-0" x 7'-0" INTERIOR WOOD DOOR
- 4 3'-0" x 7'-0" INTERIOR WOOD DOOR 1 HR. RATED DOOR AND FRAME.
- 5 PR. 3'-0" x 7'-0" INTERIOR WOOD DOORS 1 HR. RATED DOOR AND FRAME.
- 6 4'-0" x 7'-0" WOOD CASED OPNG.

WINDOW SCHEDULE

- A 7'-5" x 3'-0" ALUMINUM STOREFRONT
- B 2- 3'-0" x 4'-0" ALUMINUM FRAME WINDOWS.
- C 3'-0" x 4'-0" ALUMINUM FRAME WINDOWS.
- D 6'-0" x 4'-0" ALUMINUM FRAME VISION PANEL

NEW OFFICE / WAREHOUSE
AMERICAN TRADESHOW SERVICES
LOTS 4 & 5, NORTHSORE COMMERCIAL PARK
ST. TAMMANY PARISH, LOUISIANA

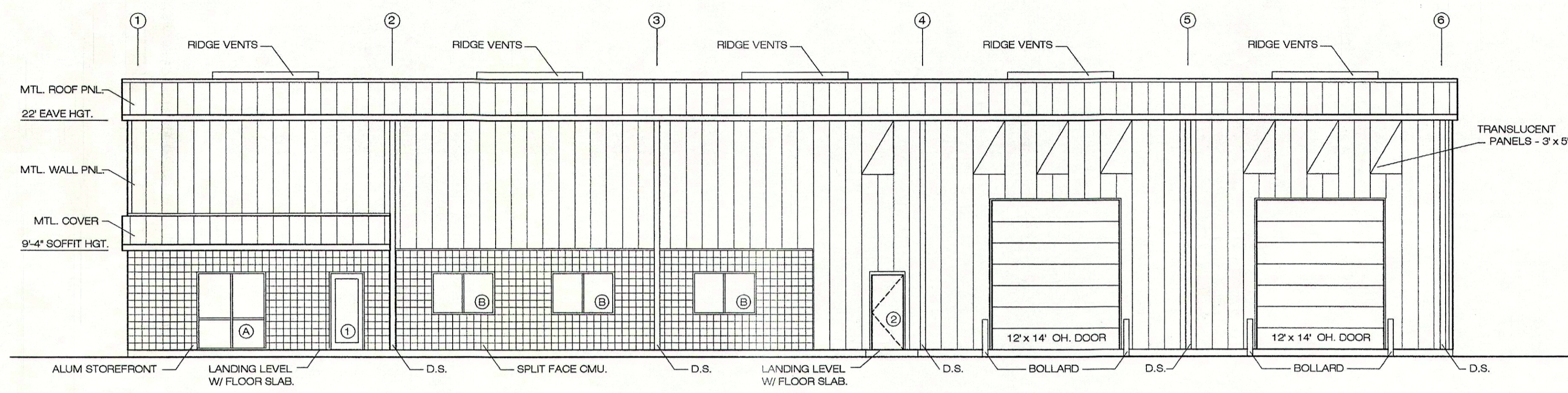
RATLIFF ARCHITECTS
814 MARINERS PLAZA DRIVE
MANDEVILLE, LOUISIANA
(985) 626-5236

JULY 30, 2007
JOB # 03-07

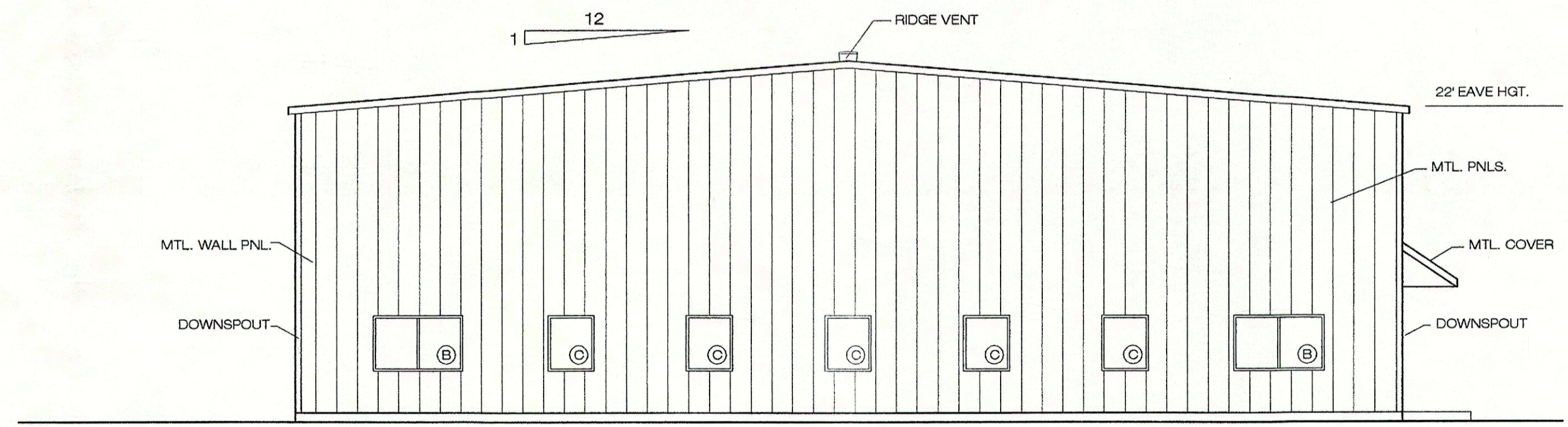
SHEET:

A-3

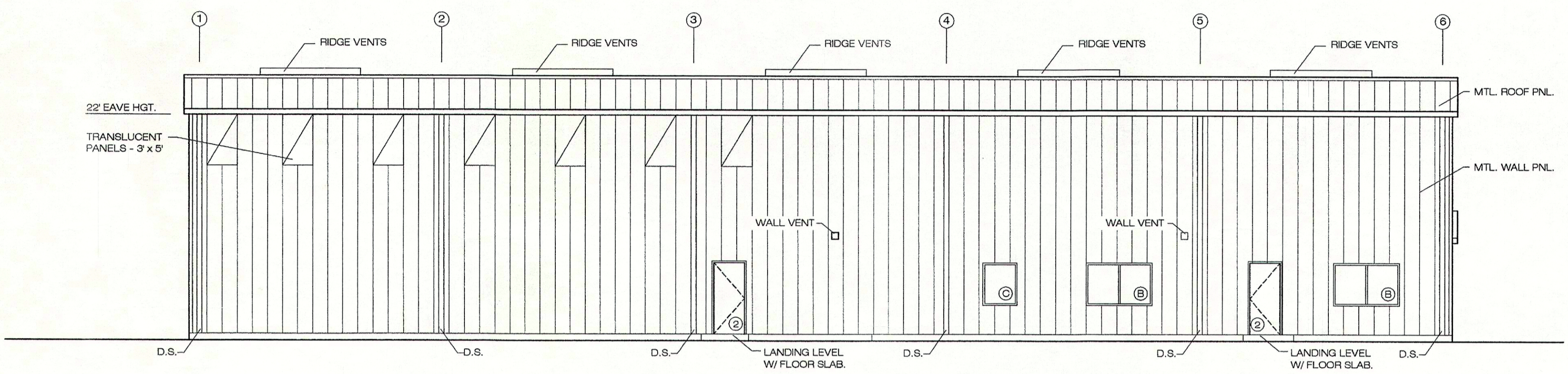
3 OF 10



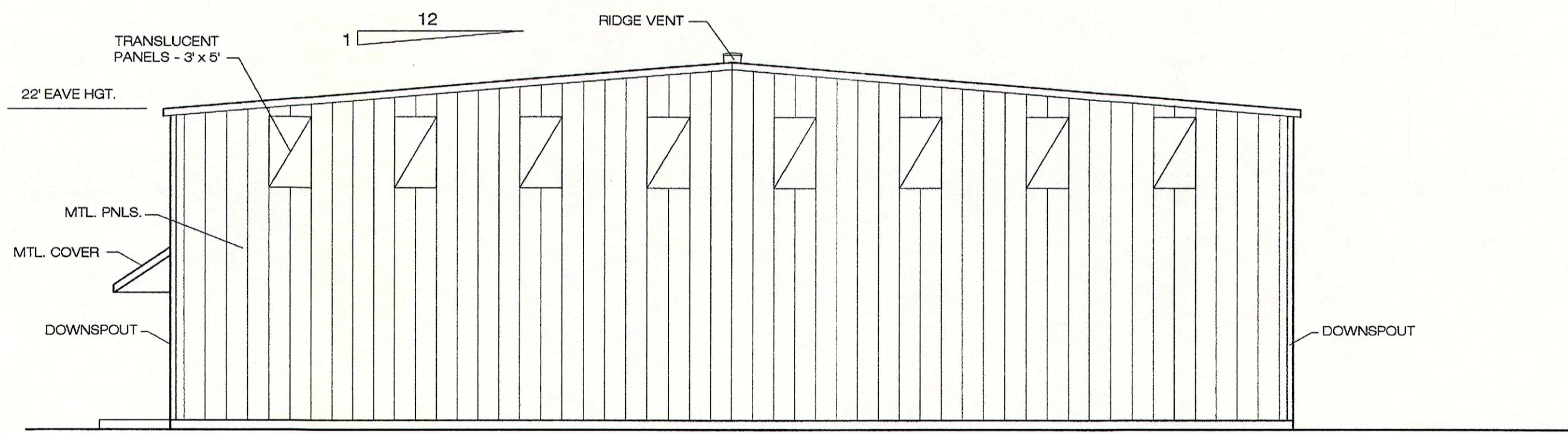
1 FRONT ELEVATION
A4 SCALE 1/8" = 1'-0"



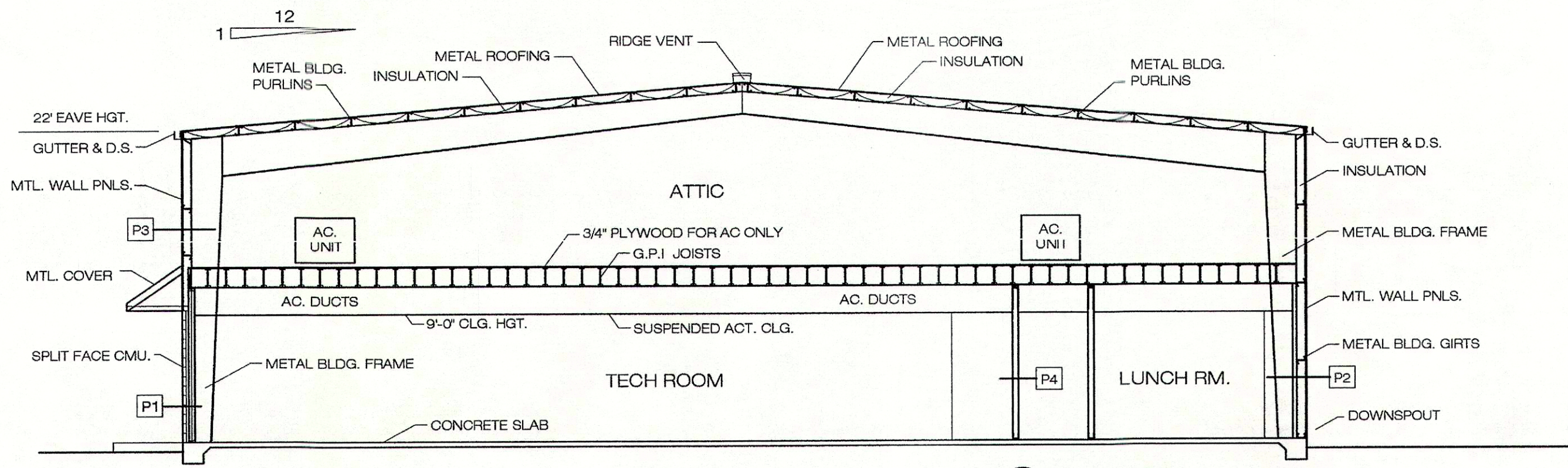
2 SIDE ELEVATION
A4 SCALE 1/8" = 1'-0"



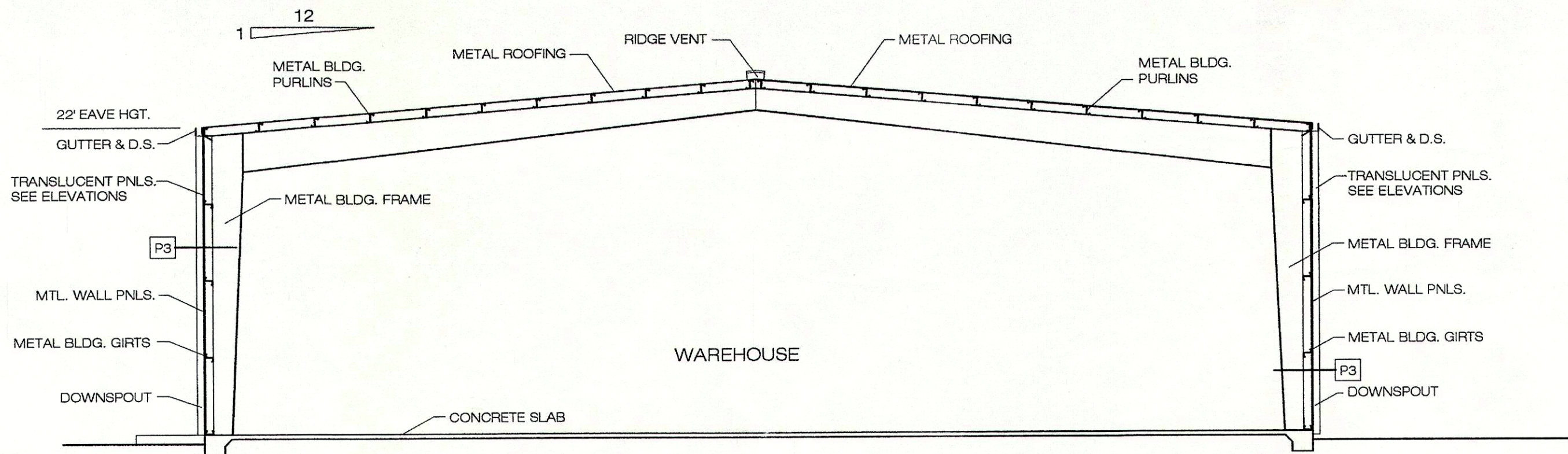
1 BACK ELEVATION
A5 SCALE 1/8" = 1'-0"



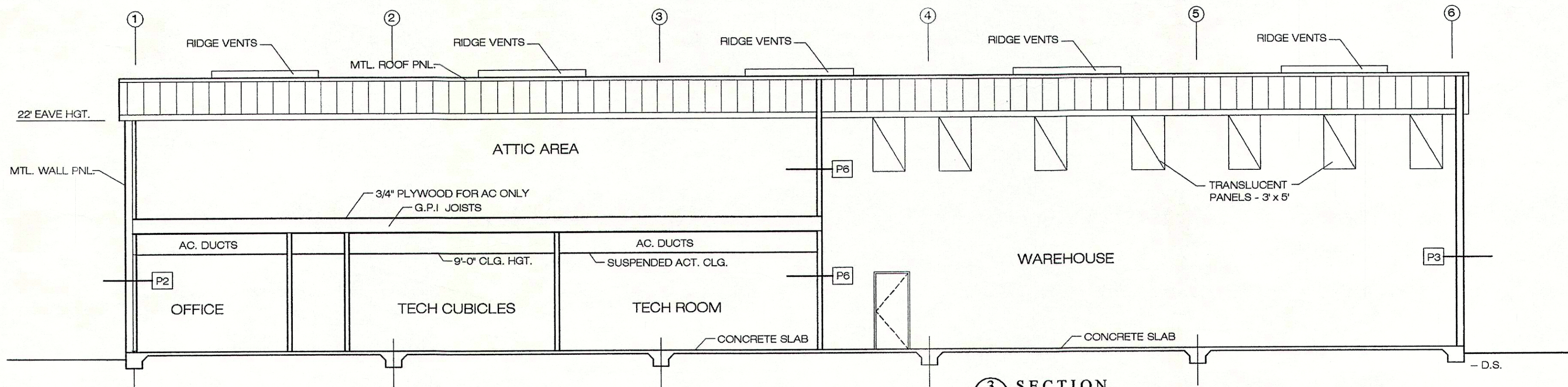
2 SIDE ELEVATION
A5 SCALE 1/8" = 1'-0"



1 SECTION
A6 SCALE 1/8" = 1'-0"



2 SECTION
A6 SCALE 1/8" = 1'-0"



3 SECTION
A6 SCALE 1/8" = 1'-0"

PARTITION TYPES:

P1 EXTERIOR WALLS OF BUILDING: METAL BUILDING FRAME WITH SPLIT FACE CONCRETE BLOCK. 2x6 WD STUDS @ 16" O.C. W/ BATT INSULATION R-19, VAPOR BARRIER, 5/8" GYPSUM BOARD, TAPE, FLOAT AND PAINT.

P2 EXTERIOR WALLS OF BUILDING: METAL BUILDING FRAME WITH METAL WALL PANELS. 2x6 WD STUDS @ 16" O.C. W/ BATT INSULATION R-19, VAPOR BARRIER, 5/8" GYPSUM BOARD, TAPE, FLOAT AND PAINT.

P3 EXTERIOR WALLS OF BUILDING: METAL BUILDING FRAME WITH METAL WALL PANELS.

P4 2x4 WD. STUDS @16" O.C. W/ ONE LAYER OF 5/8" GYPSUM BD. EA. SIDE TO CLG.

P5 2x6 STUDS @16" O.C. W/ ONE LAYER OF 5/8" WATER RESISTANT GYPSUM BD. EA. SIDE TO CEILING.

P6 2x6 WD. STUDS @16" O.C. W/ ONE LAYER OF 5/8" GYPSUM BD. EA. SIDE TO ROOF DECK. 1 HR. RATED UL. DES. U305.

P7 2x6 WD. STUDS @16" O.C. W/ ONE LAYER OF 5/8" GYPSUM BD. EA. SIDE;

RATLIFF ARCHITECTS

814 MARINER'S PLAZA DRIVE
MANDEVILLE, LOUISIANA
(985) 626-5236

NEW OFFICE / WAREHOUSE
AMERICAN TRADESHOW SERVICES

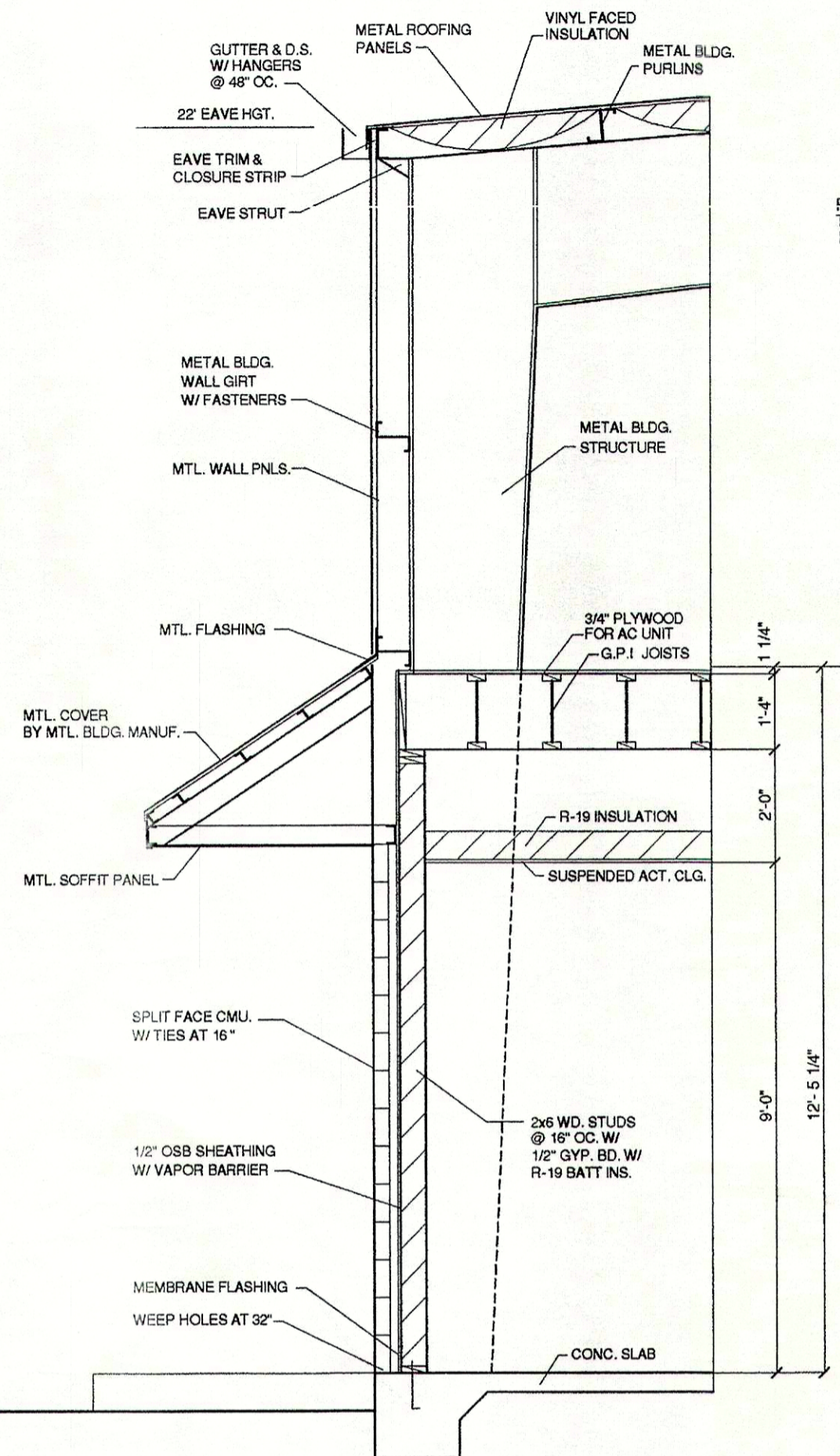
LOTS 4 & 5, NORTHSORE COMMERCIAL PARK
ST. TAMMANY PARISH, LOUISIANA

JULY 30, 2007
JOB # 03-07

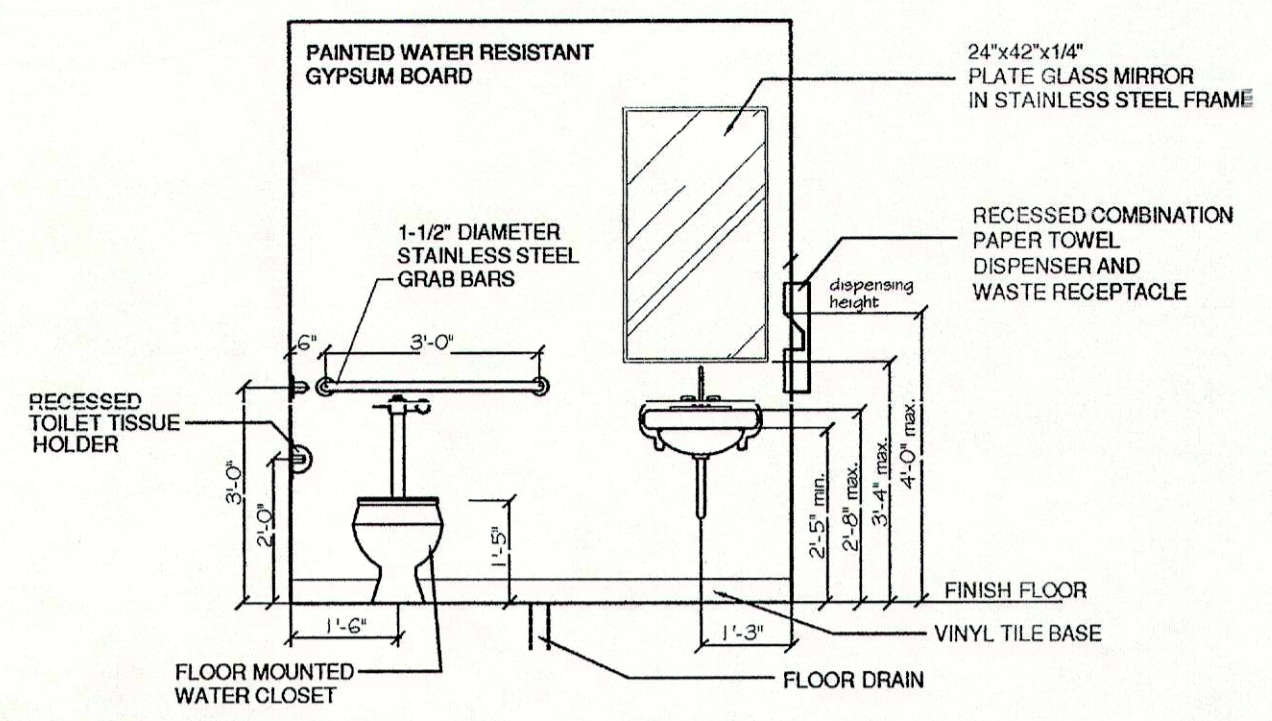
SHEET:

A-6

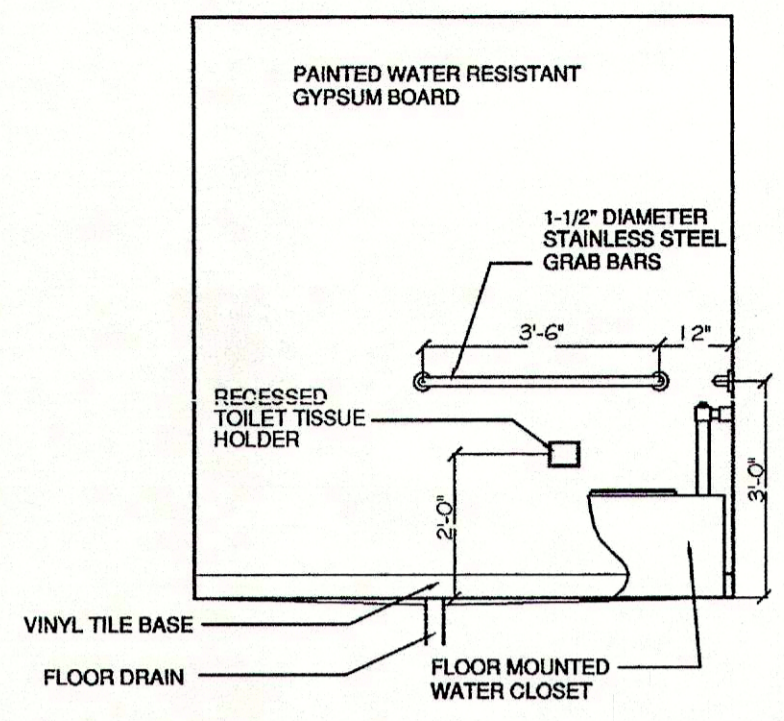
6 OF 10



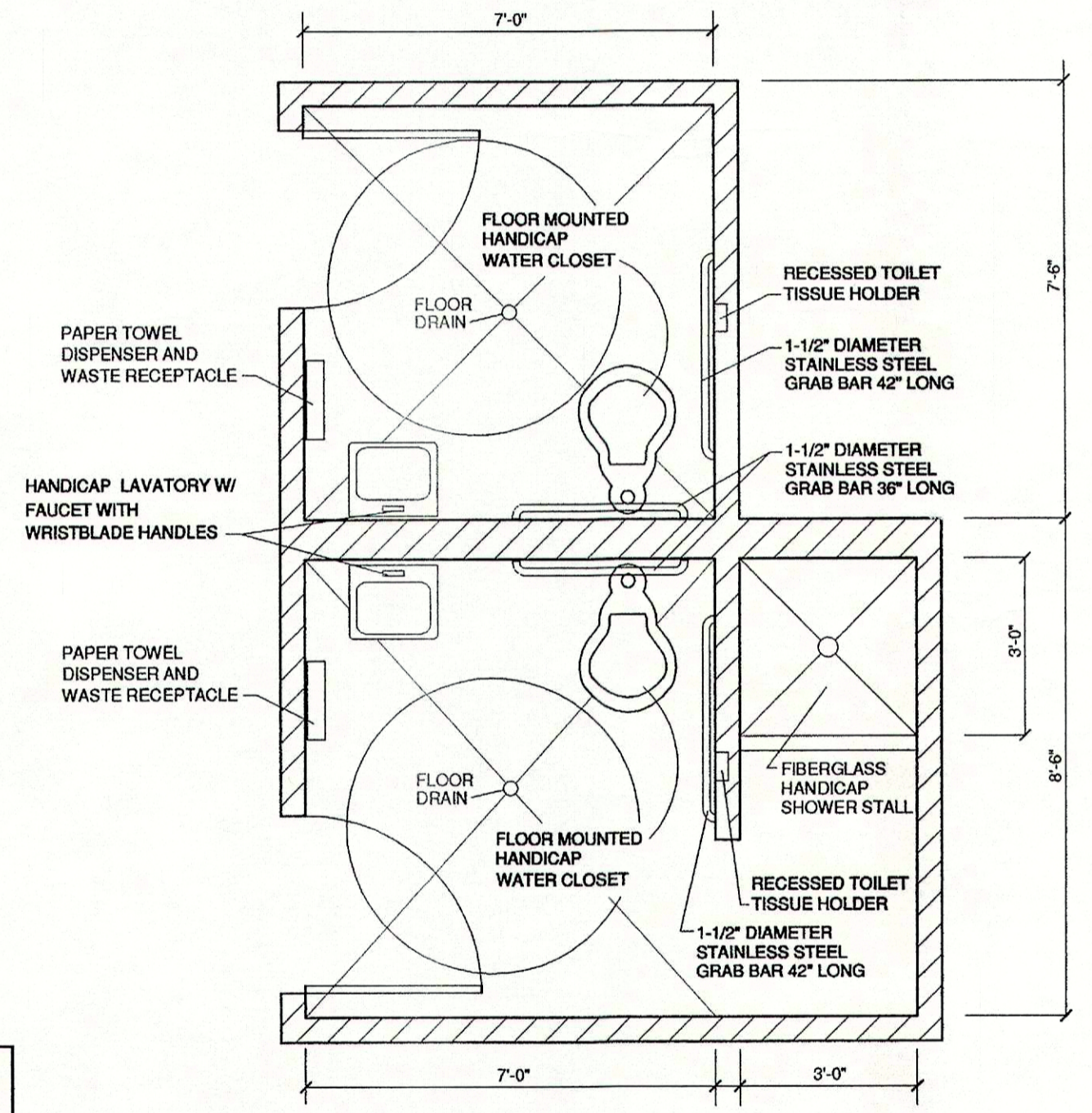
4 WALL SECTION
A7 SCALE 3/8" = 1'-0"



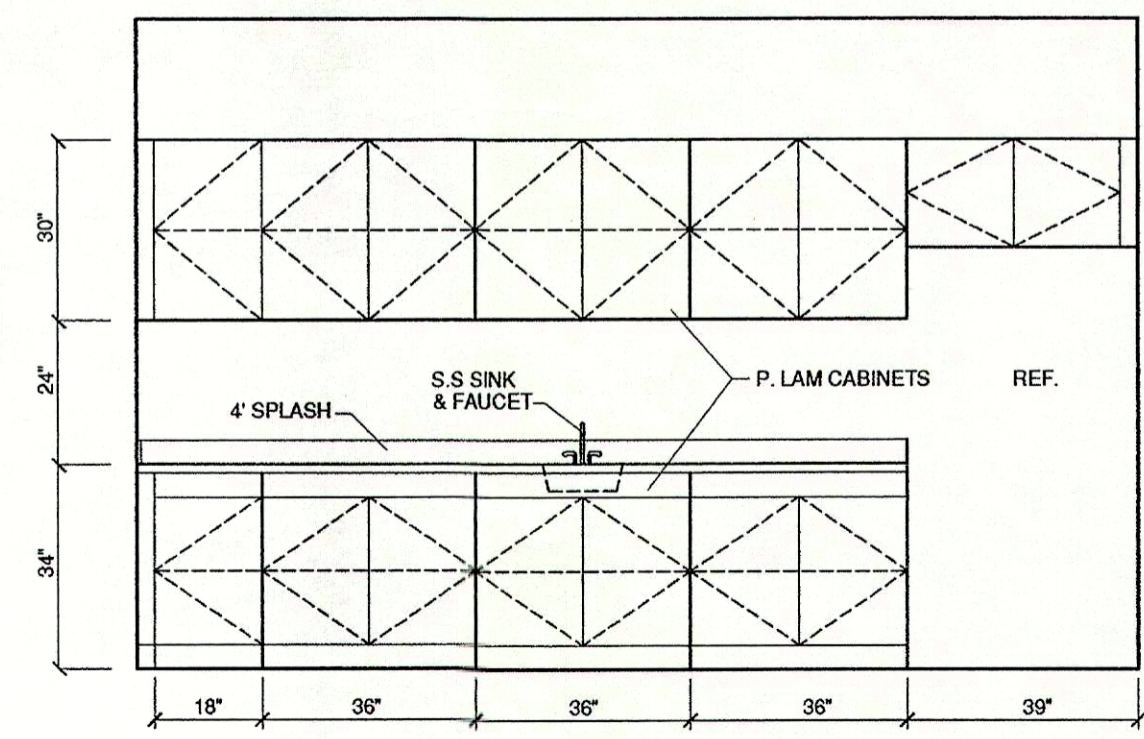
2 ELEVATION
A7 SCALE 3/8" = 1'-0"



1 ELEVATION
A7 SCALE 3/8" = 1'-0"



3 PLAN (TYP.)
A7 SCALE 3/8" = 1'-0"



5 ELEVATION
A7 SCALE 3/8" = 1'-0"

NEW OFFICE / WAREHOUSE

AMERICAN TRADESHOW SERVICES

LOTS 4 & 5, NORTHSORE COMMERCIAL PARK
ST. TAMMANY PARISH, LOUISIANA

RATLIFF ARCHITECTS

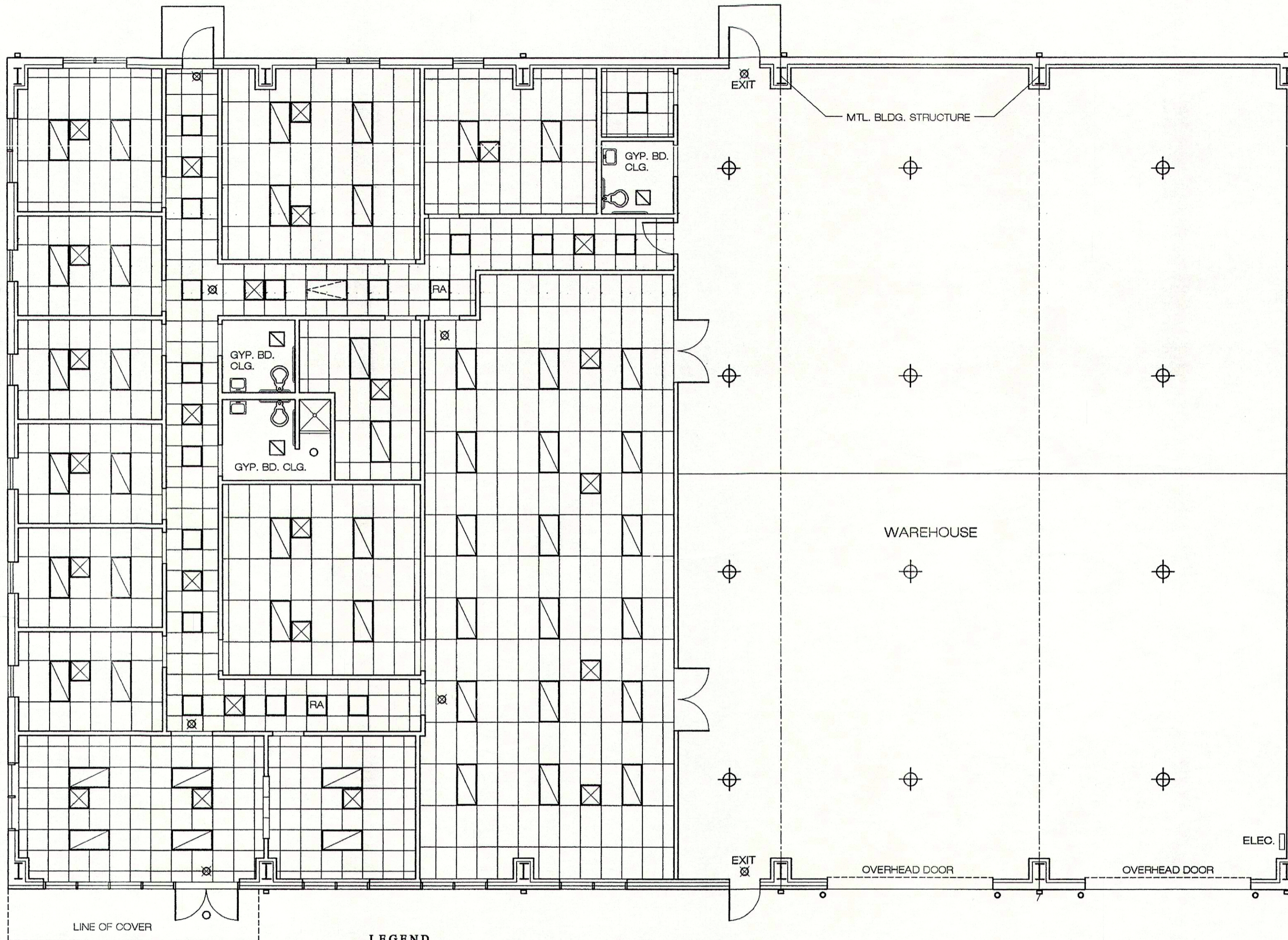
814 MARINERS PLAZA DRIVE
MANDEVILLE, LOUISIANA
(985) 626-5236

JULY 30, 2007
JOB # 03-07

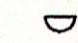
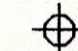
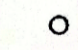
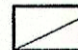
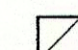
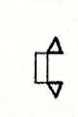
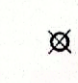
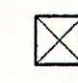
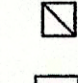
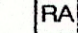
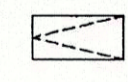
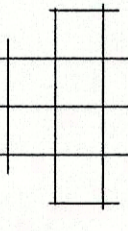
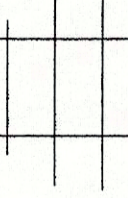
SHEET:

A-7

7 OF 10



LEGEND

-  WALL FIXTURE
-  HIGH PRESSURE SODIUM FIXTURE
-  RECESSED CAN LIGHT
-  2 x 4 FLUORESCENT LIGHT FIXTURE
-  2 x 2 FLUORESCENT LIGHT FIXTURE
-  WALL MOUNTED EMERGENCY LIGHT WITH BATTERY BACKUP ON EMERGENCY CIRCUIT
-  CEILING MTD. EXIT SIGN WITH BATTERY BACKUP ON EMERGENCY CIRCUIT
-  CLG. MTD. DIFFUSER
-  EXHAUST FAN
-  CLG. MTD. RETURN AIR GRILL
-  PULL DOWN ATTIC STAIR
-  2x2 SUS. ACT. CLG. 9'-0" CLG. HGT. R-19 BATT. INS. ABOVE
-  2x4 SUS. ACT. CLG. 9'-0" CLG. HGT. R-19 BATT. INS. ABOVE

N  **1** CEILING PLAN
A8 SCALE 1/8" = 1'-0"

NEW OFFICE / WAREHOUSE

AMERICAN TRADESHOW SERVICES

LOTS 4 & 5, NORTHSORE COMMERCIAL PARK
ST. TAMMANY PARISH, LOUISIANA

JULY 30, 2007
JOB # 03-07

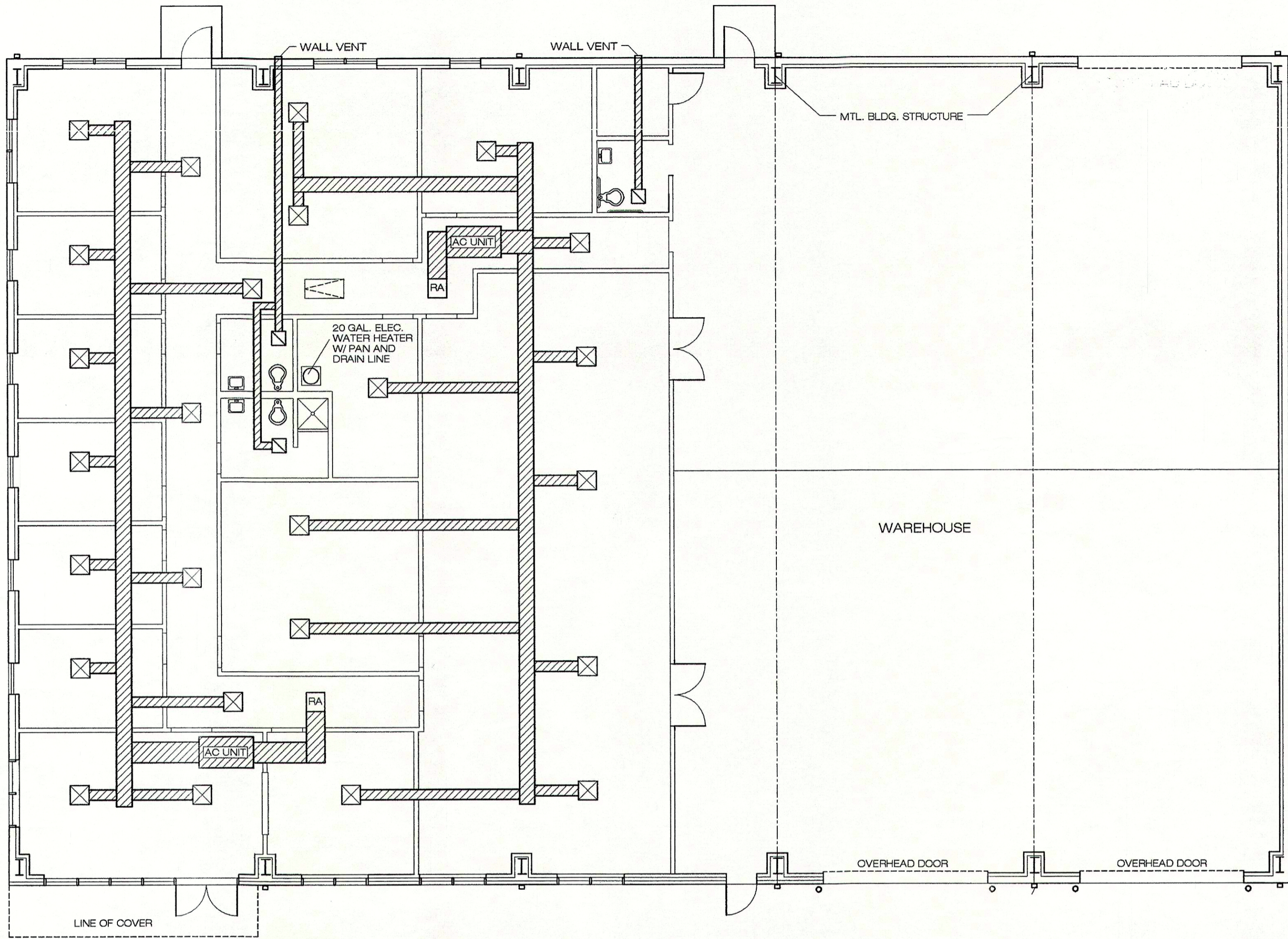
SHEET:

A-8

8 OF 10

RATLIFF
ARCHITECTS

814 MARINER'S PLAZA DRIVE
MANDEVILLE, LOUISIANA
(985) 626-5236



LEGEND

- CLG. MTD. DIFFUSER
- EXHAUST FAN
- CLG. MTD. RETURN AIR GRILL
- PULL DOWN ATTIC STAIR
- AC DUCT - RUN ABOVE CLG. AND BELOW JOISTS.

MECHANICAL PLAN
 SCALE 1/8" = 1'-0"

GENERAL NOTES

ALL EQUIPMENT FURNISHED AND ALL WORK SHALL BE IN STRICT CONFORMITY WITH MECHANICAL SECTION OF REGULATORY INSPECTIONS FOR ST. TAMMANY PARISH. STATE FIRE MARSHALL, N.M.C. & ALL OTHER APPLICABLE LAWS, ORDINANCES, CODES & RULES OF CONSTRUCTION APPLICABLE IN THE LOCALITY OF WORK.

PERMITS, CERTIFICATES OF INSPECTION AND APPROVAL AS APPLICABLE TO THE VARIOUS PORTIONS OF THE WORK SHALL BE OBTAINED FROM THE INSPECTION AGENCY HAVING JURISDICTION THEREON AND SHALL BE DELIVERED TO THE ARCHITECT PRIOR TO ACCEPTANCE OF THE WORK. PAY ALL FEES REQUIRED IN CONNECTION WITH VARIOUS INSPECTIONS AND PERMITS.

MECHANICAL PLANS SHOW GENERAL WORK TO BE PERFORMED BY CONTRACTOR AND HAS BEEN PREPARED TO ASSIST THE CONTRACTOR IN PREPARING HIS PROPOSED COST FOR THE TOTAL PROJECT. IT IS THE RESPONSIBILITY OF THE CONTRACTOR TO VISIT THE JOB SITE AND BECOME FAMILIAR WITH EXISTING CONDITIONS WHICH MAY AFFECT HIS WORK AND FINAL BID PRICE.

MECHANICAL CONTRACTOR SHALL SIZE AC UNITS AND DUCTWORK.

ALL PENETRATIONS THROUGH PARTITIONS AND CEILINGS SHALL BE PROPERLY SEALED TO MAINTAIN FIRE RATING OF CEILINGS AND PARTITIONS AS REQUIRED.

RATLIFF ARCHITECTS

814 MARINER'S PLAZA DRIVE
MANDEVILLE, LOUISIANA
(985) 626-5236

NEW OFFICE / WAREHOUSE
AMERICAN TRADESHOW SERVICES

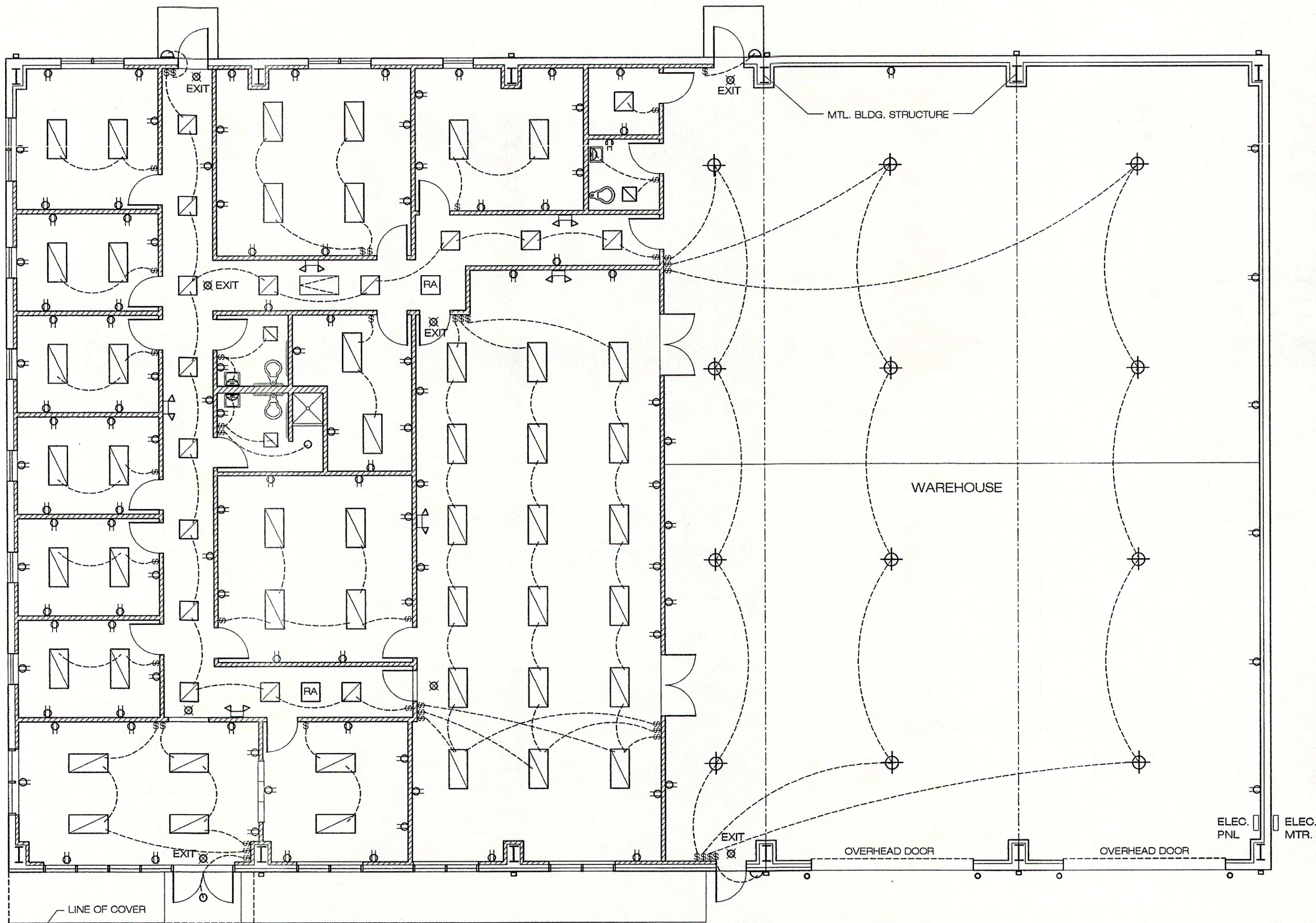
LOTS 4 & 5, NORTHSORE COMMERCIAL PARK
ST. TAMMANY PARISH, LOUISIANA

JULY 30, 2007
JOB # 03-07

SHEET:

A-9

9 OF 10



GENERAL NOTES

ALL EQUIPMENT FURNISHED AND ALL WORK SHALL BE IN STRICT CONFORMITY WITH ELECTRICAL SECTION OF REGULATORY INSPECTIONS FOR ST. TAMMANY PARISH. STATE FIRE MARSHALL, N.E.C. & ALL OTHER APPLICABLE LAWS, ORDINANCES, CODES & RULES OF CONSTRUCTION APPLICABLE IN THE LOCALITY OF WORK.



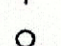
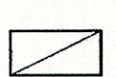
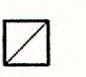
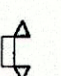


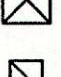
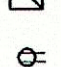
PERMITS, CERTIFICATES OF INSPECTION AND APPROVAL AS APPLICABLE TO THE VARIOUS PORTIONS OF THE WORK SHALL BE OBTAINED FROM THE INSPECTION AGENCY HAVING JURISDICTION THEREON AND SHALL BE DELIVERED TO THE ARCHITECT PRIOR TO ACCEPTANCE OF THE WORK. PAY ALL FEES REQUIRED IN CONNECTION WITH VARIOUS INSPECTIONS AND PERMITS.

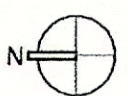
ELECTRICAL PLANS SHOW GENERAL WORK TO BE PERFORMED BY CONTRACTOR AND HAS BEEN PREPARED TO ASSIST THE CONTRACTOR IN PREPARING HIS PROPOSED COST FOR THE TOTAL PROJECT. IT IS THE RESPONSIBILITY OF THE CONTRACTOR TO VISIT THE JOB SITE AND BECOME FAMILIAR WITH EXISTING CONDITIONS WHICH MAY AFFECT HIS WORK AND FINAL BID PRICE.

EACH BRANCH CIRCUIT AND/OR FEEDER SHALL HAVE A GREEN INSULATED EQUIPMENT GROUND CONDUCTOR.

ALL PENETRATIONS THROUGH PARTITIONS AND CEILINGS SHALL BE PROPERLY SEALED TO MAINTAIN FIRE RATING OF CEILINGS AND PARTITIONS AS REQUIRED.

LEGEND

-  WALL FIXTURE
-  HIGH PRESSURE SODIUM FIXTURE
-  RECESSED CAN LIGHT
-  2 x 4 FLUORESCENT LIGHT FIXTURE
-  2 x 2 FLUORESCENT LIGHT FIXTURE
-  WALL MOUNTED EMERGENCY LIGHT WITH BATTERY BACKUP ON EMERGENCY CIRCUIT
-  CEILING MTD. EXIT SIGN WITH BATTERY BACKUP ON EMERGENCY CIRCUIT
-  CLG. MTD. DIFFUSER
-  EXHAUST FAN
-  DUPLEX OUTLET

 **ELECTRICAL PLAN**
 SCALE 1/8" = 1'-0"

RATLIFF ARCHITECTS

814 MARINERS PLAZA DRIVE
 MANDEVILLE, LOUISIANA
 (985) 626-5236

NEW OFFICE / WAREHOUSE
 AMERICAN TRADESHOW SERVICES

LOTS 4 & 5, NORTHSHORE COMMERCIAL PARK
 ST. TAMMANY PARISH, LOUISIANA

JULY 30, 2007 -
 JOB # 03-07

SHEET:

A-10

10 OF 10