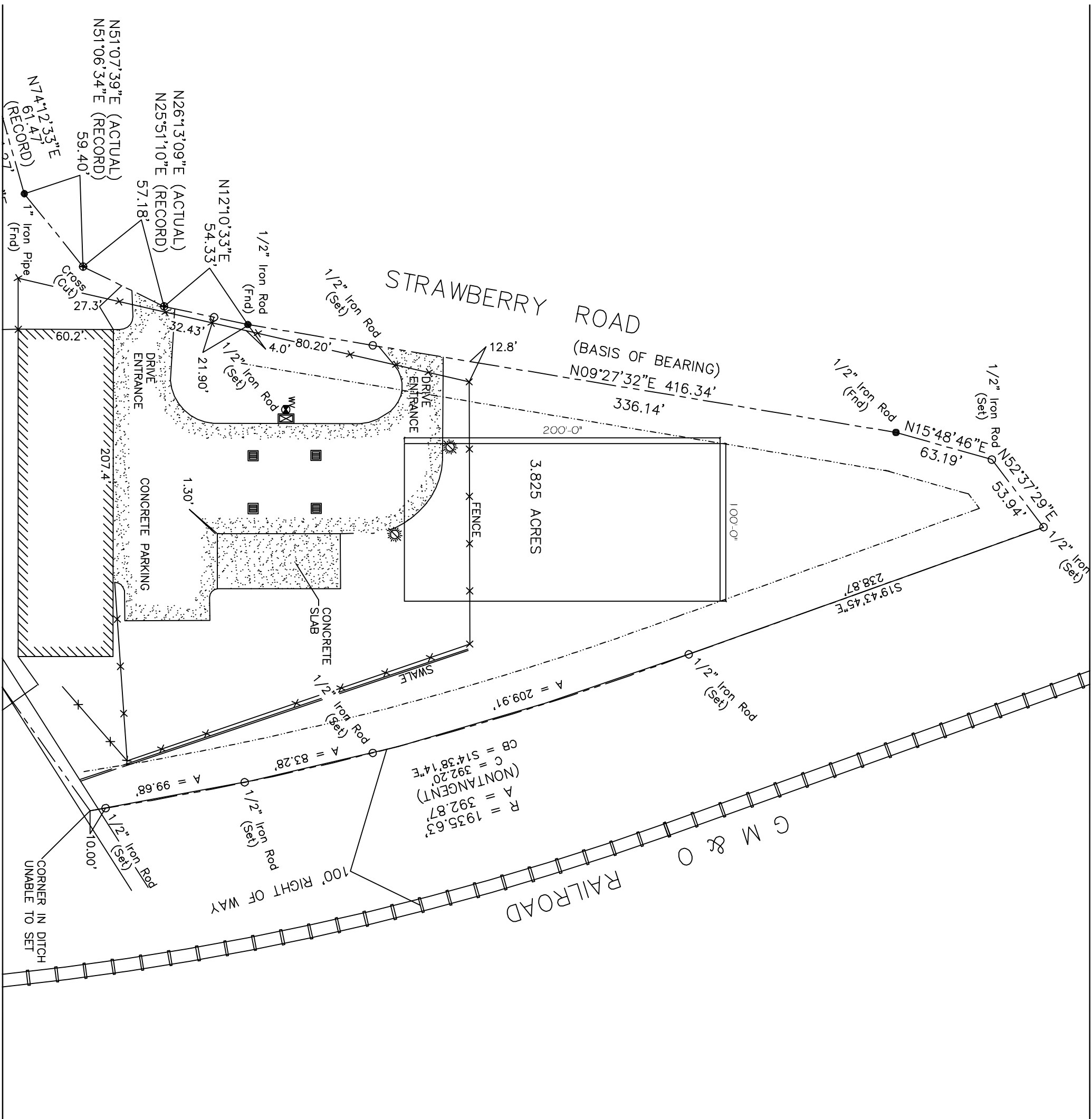


STRAWBERRY ROAD
 (BASIS OF BEARING)
 N09°27'32"E 416.34'
 336.14'

3.825 ACRES

G M & O
 RAILROAD
 100' RIGHT OF WAY

R = 1935.63'
 A = 392.87°
 (NONTANGENT)
 C = 392.20°
 CB = 51438.14'E

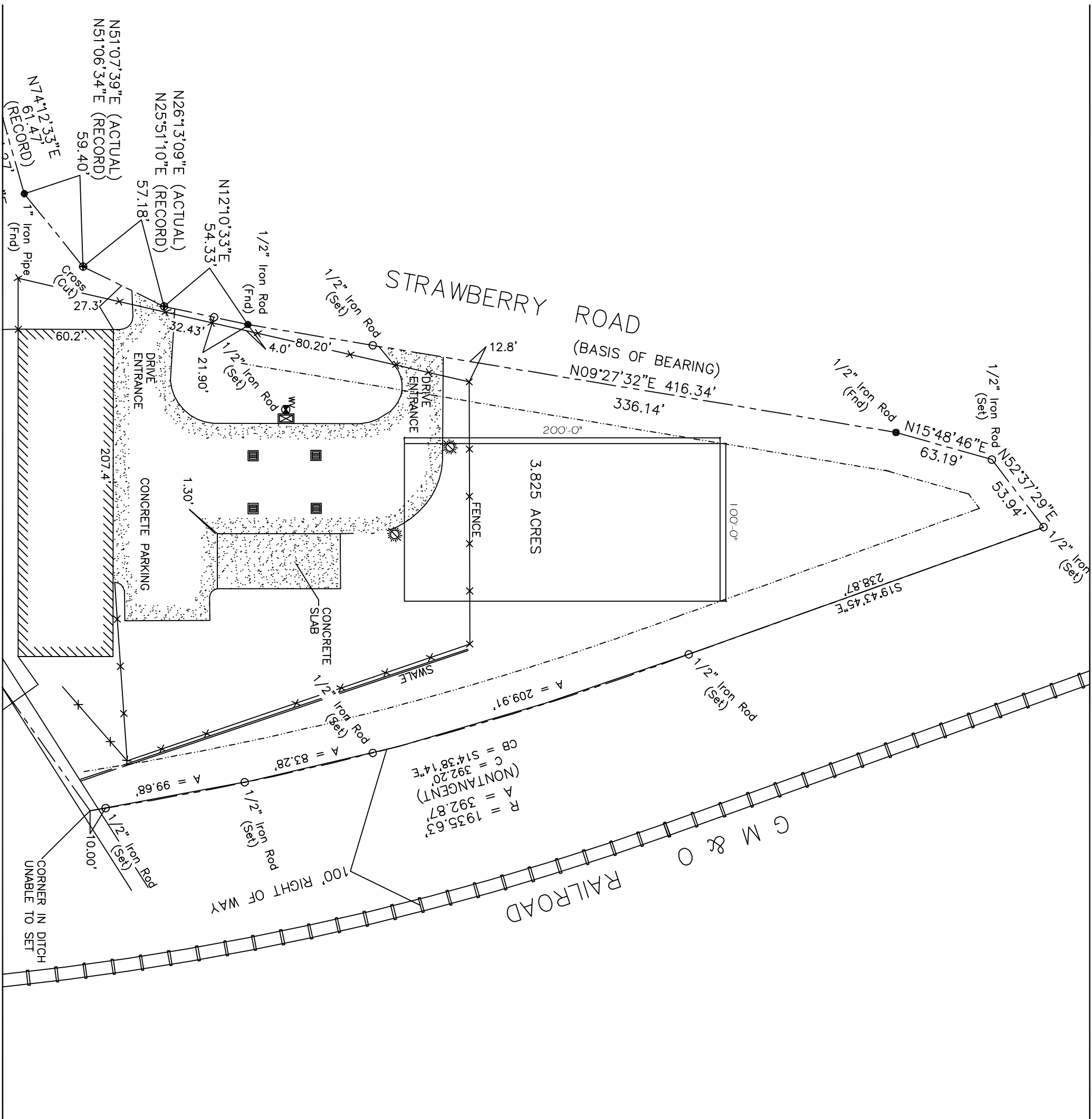


STRAWBERRY ROAD
 (BASIS OF BEARING)
 N09°27'32"E 416.34'
 336.14'

3.825 ACRES

G M & O
 RAILROAD
 100' RIGHT OF WAY

R = 1935.63'
 A = 392.87°
 (NONTANGENT)
 C = 392.20°
 CB = 51438.14'E



STRAWBERRY ROAD
 (BASIS OF BEARING)
 N09°27'32"E 416.34'
 336.14'

3.825 ACRES

G M & O
 RAILROAD
 100' RIGHT OF WAY

R = 1935.63'
 A = 392.87°
 (NONTANGENT)
 C = 392.20°
 CB = 51438.14'E