

SYM.	DESCRIPTION	COMMENTS
	STANDARD 120V DUPLEX RECEPTACLE @ 18" AFF (UNLESS NOTED)	
	GFI RECEPTACLE	ALL OUTLETS WITHIN 48" OF A WATER SOURCE SHALL BE GFI
	WEATHER PROOF 120V DUPLEX RECEPT. @ 30" AFF (UNLESS NOTED)	
	POWER DISCONNECT	
	ELECTRIC WATER HEATER SIZE AS NOTED	
	AIR CONDITIONING COND. UNIT SEE MECH SHEETS FOR UNIT DETAILS	
	CEILING FANS	

NOTES:
1. CONNECT ALL EMERGENCY / EXIT LIGHT FIXTURES TO NEAREST CONSTANT POWER SOURCE.

LIGHTING LEGEND

- VENT / LIGHT COMBINATION
- WALL MTD. EMER./EXIT LIGHT W/ 90 MIN. BATT. BACKUP
- LIGHT ABOVE SINK
- WALL PACK 150W METAL HALIDE ON PHOTOCELL
- CAN LIGHTS
- LIGHT SWITCH
- THREE WAY LIGHT SWITCH

ELECTRICAL NOTES

- ALL WORK SHALL CONFORM TO THE LATEST EDITION OF THE NATIONAL ELECTRICAL CODE, THE GOVERNING ELECTRICAL CODE AND ALL OTHER INSPECTION DEPARTMENTS HAVING JURISDICTION. OBTAIN CERTIFICATES OR APPROVAL WHERE REQUIRED.
- ALL MATERIALS FURNISHED SHALL BE NEW AND SHALL BE U.L. LISTED.
- THE DRAWINGS INDICATE SIZE AND GENERAL LOCATION OF WORK. SCALE DIMENSIONS SHALL NOT BE USED. THE EXACT LOCATION AND LOCATION OF ALL LIGHTING FIXTURES, RECEPTACLES AND TELEPHONE OUTLETS, ETC. SHALL BE DETERMINED BY ACTUAL CONDITIONS IN THE FIELD.
- PRIOR TO BIDDING, CONTRACTOR SHALL VISIT THE JOB SITE AND FAMILIARIZE THEMSELVES WITH THE EXISTING CONDITIONS.
- ELECTRICAL CONTRACTOR SHALL COORDINATE HIS WORK WITH OTHER TRADES AND WITH OTHER CONTRACTORS WHOSE WORK MAY AFFECT THIS INSTALLATION.
- ELECTRICAL CONTRACTOR SHALL COORDINATE INCOMING ELECTRICAL SERVICE WITH UTILITY COMPANY AND INCLUDE IN HIS BID ALL CHARGES AND FEES INCURRED IN MODIFICATIONS.
- WHERE MORE THAN ONE SWITCH OCCURS IN THE SAME LOCATION, THEY SHALL BE INSTALLED IN A GANG TYPE BOX UNDER ONE COVER PLATE.
- ELECTRICAL CONTRACTOR SHALL COORDINATE THE TELEPHONE INSTALLATION WITH THE TELEPHONE COMPANY AND THE GENERAL CONTRACTOR.
- ELECTRICAL CONTRACTOR, BEFORE INSTALLING ANY OF THE WORK, SHALL SEE THAT IT DOES NOT INTERFERE WITH CLEARANCES REQUIRED FOR FINISHED COLUMNS, HUNG CEILINGS, PLASTER, PARTITIONS, WALLS, ETC. AS SHOWN IN THE ARCHITECTURAL DRAWINGS AND DETAILS. IF ANY WORK IS INSTALLED AND IT LATER DEVELOPS THAT SUCH DETAILS OR DESIGN CANNOT BE FOLLOWED, THE CONTRACTOR, AT HIS OWN EXPENSE, SHALL MAKE SUCH CHANGES IN THE WORK AS DIRECTED BY THE ARCHITECT, AS WELL AS TO PERMIT THE INSTALLATION OF THE ARCHITECTURAL WORK AS SHOWN ON THE PLANS AND DETAILS.
- PERFORM TEST REQUIRED BY THE OWNER OR THE ENGINEER IN CONNECTION WITH THE OPERATION OF THE ELECTRICAL SYSTEM IN THE BUILDING.
- ALL TESTS SHALL BE MADE IN ACCORDANCE WITH THE LATEST STANDARD OF THE IEEE AND THE NATIONAL ELECTRICAL CODE.
- MINIMUM CONDUCTOR SIZE SHALL BE #12, 600V INSULATION. MINIMUM SIZE CONDUIT SHALL BE 3/4" EMT FOR INTERIOR USE, AND 7/8" RIGID ALUMINUM FOR EXTERIOR USE. USE TYPE NMC CABLE COPPER FOR LIGHTS AND RECEPTACLE CIRCUITS. EXTERIOR FITTINGS SHALL BE CAST BOXES AND COVERS. INTERIOR FITTINGS SHALL BE CAST WHERE EXPOSED ON WALLS. STAMPED BOXES MAY BE USED ABOVE CEILINGS IN AIR CONDITIONED SPACES. WHERE LAY IN FIXTURES ARE IN USE, USE 1/4" ALLOWED FOR 6" WIDTH.
- CONTRACTOR SHALL INSTALL WIRING AND OTHER CIRCUIT COMPONENTS TO MATCH EQUIPMENT ACTUALLY INSTALLED.
- INSTALL GROUND FAULT RECEPTACLES AT RECEPTACLE LOCATIONS WITHIN 5' OF SINKS OR LAVATORIES, AND AT EXTERIOR LOCATIONS. EXTERIOR RECEPTACLES SHALL ALSO BE WATERPROOF.
- BONDING AND GROUNDING SHALL BE IN ACCORDANCE WITH NFPA 70:230-63, NFPA 250-23, 250-71 & 250-72.
- GROUND NEUTRAL IN ACCORDANCE WITH NFPA 70:250-23b.
- FUSES SHALL BE ITC CLASS K5, 250 VOLT, 200,000 AMP INTERRUPTING CAP.
- PROVIDE SERVICES OF A FIRE/SMOKE DETECTION AND ALARM COMPANY TO DESIGN AND INSTALL ALARM SYSTEM TO MEET REQUIREMENTS OF THE STATE FIRE MARSHALL.
- EXTERIOR LIGHTING SHALL BE SHADED OR INWARDLY DIRECTED IN SUCH A MANNER SO THAT NO DIRECT LIGHTING OR GLARE IS CAST BEYOND THE PROPERTY LINE. THE INTENSITY OF SUCH LIGHTING SHALL NOT EXCEED ONE FOOT CANDLE AS MEASURED AT THE ADJUTING PROPERTY LINE.
- ALL ELECTRICAL, MECHANICAL AND PLUMBING PENETRATING FIRE PARTITIONS SHALL BE FIRE CAULKED. (PENETRATIONS THROUGH RATED CONSTRUCTION SHALL BE SEALED WITH A MATERIAL CAPABLE OF PREVENTING THE PASSAGE OF FLAMES AND HOT GASES WHEN TESTED IN ACCORDANCE WITH ASTM-E814.)

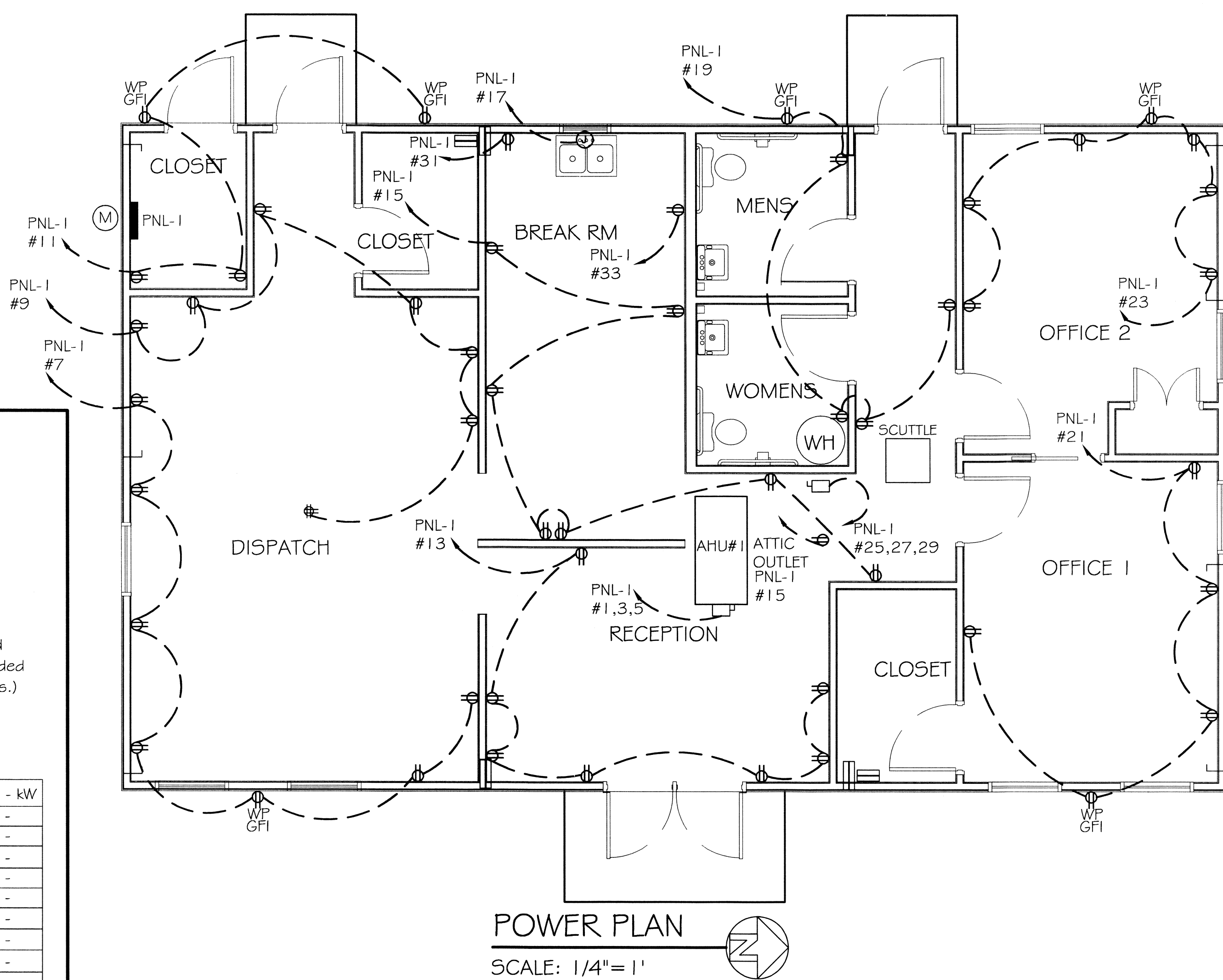
CLECO Power LLC - Electrical Load Summary

Project Name: LANDIS TRANSPORT LLC
 Project Address: LOT 21 #400 LEEWARD LOOP
 City / Town: ST. TAMMANY PARISH COVINGTON, LOUISIANA

Intended Use: Office/Warehouse Building
 Requested Service: 208 Volts 3 ϕ Phase 4 Wires
 Service Entrance Size: 225 Amps
 HVAC Tonnage: 5.00 Tons
 Largest Motor: N/A HP (Note: Motors above 20 hp may require reduced Voltage starting and are never recommended for use with 120/240V, 3 ϕ , 4W services.)

Total Building Square Footage: 1,500 Square Feet
 Individual Unit Square Footage: N/A Square Feet (Multiple Occupancy)
 Individual Unit Designation: N/A (Multiple Occupancy)

LOAD SOURCE	1 ϕ - kVA	3 ϕ - kVA	or	1 ϕ - kW	3 ϕ - kW
Building Lighting	-	15,000	or	-	-
Electric Water Heating	-	7200	or	-	-
Heat Pumps	-	-	or	-	-
Supplemental Heat System	-	-	or	-	-
Air Conditioning Condensing Units	-	9,600	or	-	-
Electrical Heating (Primary) - AHUs	-	10,800	or	-	-
Cooking	-	-	or	-	-
Refrigeration	-	160	or	-	-
Receptacles (Standard)	-	7840	or	-	-
Receptacles (Computer)	-	-	or	-	-
Total Motors (Exclude HVAC)	-	-	or	-	-
Exterior Lighting	-	600	or	-	-
Miscellaneous - Ceiling Fans	-	-	or	-	-
Other (Specify)	-	-	or	-	-



PANEL: PANEL 1
 LOCATION: EXTERIOR CLOSET
 FEEDER SOURCE: CLECO

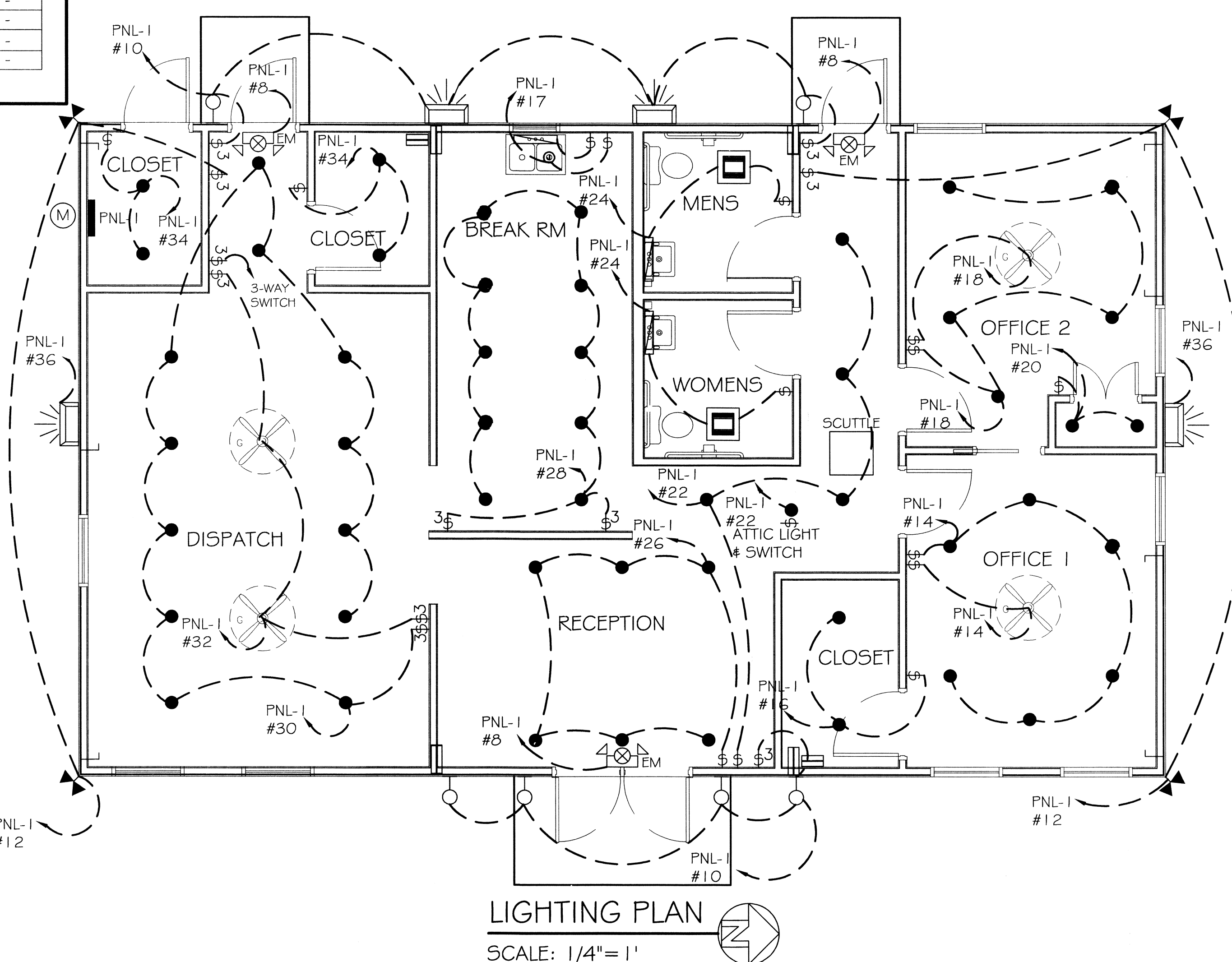
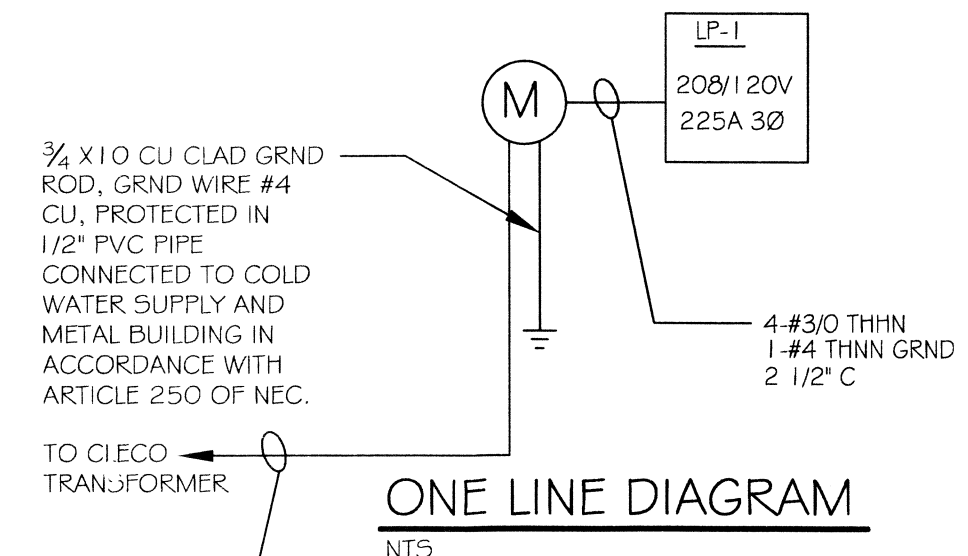
VOLTAGE: 208/120V, 225A 3 ϕ , 4W
 ENCLOSURE: SURFACE MOUNTED W/EQUIPMENT GND BAR
 W/ 225 MAIN BRK. 22000 AIC NEMA

CKT. NO.	THIN WIRE SIZE	LOAD DESCRIPTION	BREAKER	LOAD (KVA)	LOAD (KVA)		BREAKER	LOAD DESCRIPTION	THIN WIRE SIZE	CKT. NO.
					POLE	AMP				
1				3200	3600					2
3	#2	AC COMPRESSOR	30 3	3200	3600	3	60	HEATER 15KW	#2	4
5				3200	3600					6
7	#12	DISPATCH ROOM OUTLETS AND EXTERIOR WP GFI OUTLET	20 1	1120	900	1	20	EXIT EMERGENCY LIGHTS	#12	8
9	#12	DISPATCH ROOM FLOOR OUTLET AND WALL OUTLETS	20 1	1120	1600	1	20	EXTERIOR LIGHTING	#12	10
11	#12	EXTERIOR STORAGE CLOSET AND EXTERIOR WP GFI OUTLETS	20 1	640	800	1	20	EXTERIOR FLOOD LIGHTS	#12	12
13	#12	RECEPTION ROOM WALL OUTLETS	20 1	1120	1400	1	20	OFFICE 1 LIGHTING AND FAN	#12	14
15	#12	BREAK ROOM, HALLWAY, AND ATTIC OUTLETS	20 1	1280	400	1	20	OFFICE 1 CLOSET LIGHTING	#12	16
17	#12	BREAK ROOM GARBAGE DISPOSAL	20 1	160	1200	1	20	OFFICE 2 LIGHTING AND FAN	#12	18
19	#12	RESTROOMS, HALLWAY OUTLETS, AND EXTERIOR WP GFI OUTLET	20 1	800	400	1	20	OFFICE 2 CLOSET LIGHTING	#12	20
21	#12	OFFICE 1 OUTLETS AND EXTERIOR WP GFI OUTLET	20 1	800	800	1	20	HALLWAY AND ATTIC LIGHTING	#12	22
23	#12	OFFICE 2 OUTLETS AND EXTERIOR WP GFI OUTLET	25 1	1120	800	1	20	MENS AND WOMENS RESTROOMS EXHAUST FANS AND LIGHTING	#12	24
25				2400	1200	1	20	RECEPTION LIGHTING	#12	26
27	#12	WATER HEATER	30 1	2400	2000	1	20	BREAK ROOM LIGHTING	#12	28
29				2400	2400	1	20	DISPATCH ROOM LIGHTING	#12	30
31		REFRIGERATOR	20 1	160	400	3	100	DISPATCH ROOM FANS	#12	32
33		MICROWAVE	20 1	160	800	1	20	EXTERIOR AND DISPATCH ROOM CLOSET LIGHTING	#12	34
35		SPARE	20 1	-	400	1	20	EXTERIOR WALL PACK LIGHTING	#12	36
37		SPACE	-	-	-	-	-	SPACE	-	38
39		SPACE	-	-	-	-	-	SPACE	-	40
41		SPACE	-	-	-	-	-	SPACE	-	42

TOTAL CONNECTED LOAD (KVA) = 51,580

GROUND BUS: 16,860 18,000 16,720

GROUND WIRE (G): 3-3/0 MCM 1-2" C



DAMMON
 ENGINEERING, INC.
 Architects & Engineers

CHIEF ENGINEER: EMMETT DAMMON, P.E.
 CHIEF ARCHITECT: KEVIN KINCHEN
 554 OLD SPANISH TRAIL
 SUITE LL, LA 70456

LANDIS TRANSPORT LLC
 OFFICE/WAREHOUSE BUILDING
 LOT 21 #400 LEEWARD LOOP
 ST. TAMMANY PARISH, COVINGTON, LOUISIANA
 ADDRESS: LINE 3

DATE	REVISIONS	DESCRIPTION
01-30-2013	1	CD
2/16/4	2	JCT



ELECTRICAL PLAN

SHEET No: 8 OF 9

E-1