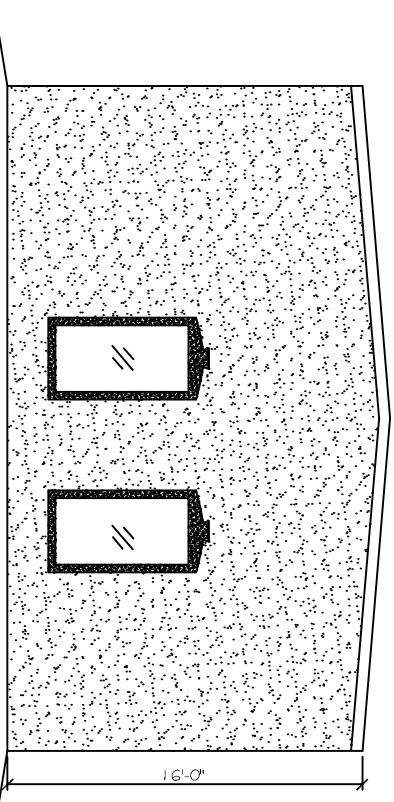
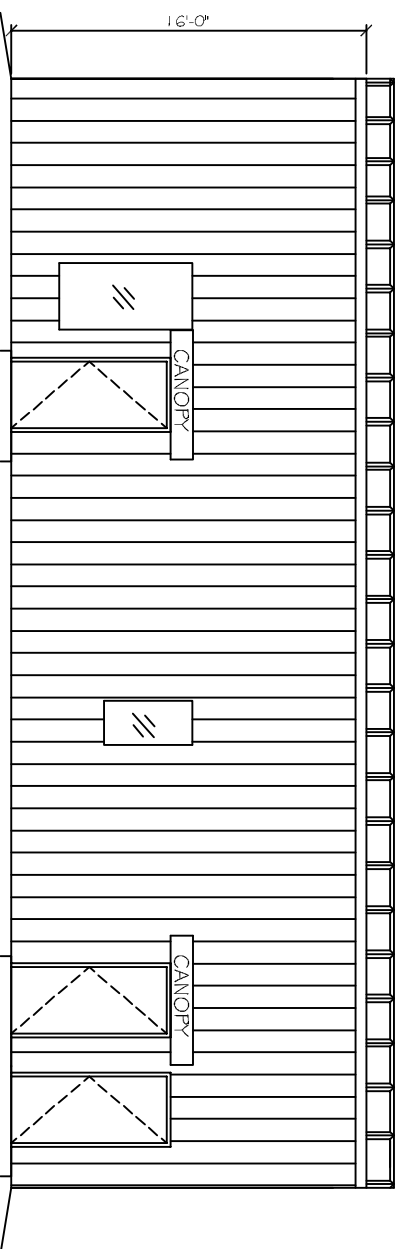


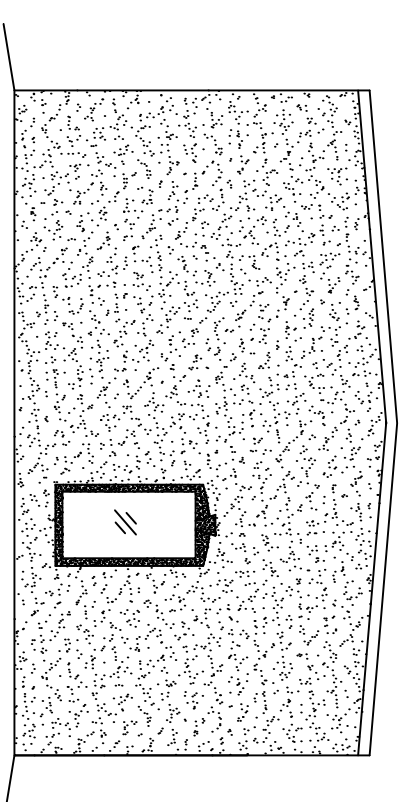
FRONT ELEVATION  
SCALE: 3/16" = 1'-0"



RIGHT ELEVATION



REAR ELEVATION  
SCALE: 3/16" = 1'-0"



LEFT ELEVATION

NOT APPROVED FOR CONSTRUCTION


REVISIONS		
#	DESCRIPTION	DATE

**LANDIS TRANSPORT LLC  
OFFICE/WAREHOUSE BUILDING**

LOT 2 | 400 LEEWARD LOOP  
ST. TAMMANY PARISH COVINGTON, LOUISIANA

JOB No: 2164      DATE: 01-30-2013

DRAWN BY: JCT      CHECKED BY: CD



**DAMMON  
ENGINEERING, INC.**  
*Architects & Engineers*

CHIEF ENGINEER: ENNETT DAMMON, P.E.  
CHIEF ARCHITECT: KEVIN KINCHEN  
554 OLD SPANISH TRAIL  
SUDELL, LA 70458

The above drawings and specifications, as given and intended, are the property of Dammon Engineering, Inc. and shall remain the confidential property of the firm. No part of these drawings or specifications shall be used for any other project without the express written consent of Dammon Engineering, Inc. All drawings and specifications are subject to change without notice and shall be the responsibility of the contractor.

dammoneng@att.net  
dammoneng@bellsouth.net  
PHONE: 905-649-5832  
FAX: 905-641-5950

ELEVATION  
PLAN

SHEET No: 5 OF 8

A2