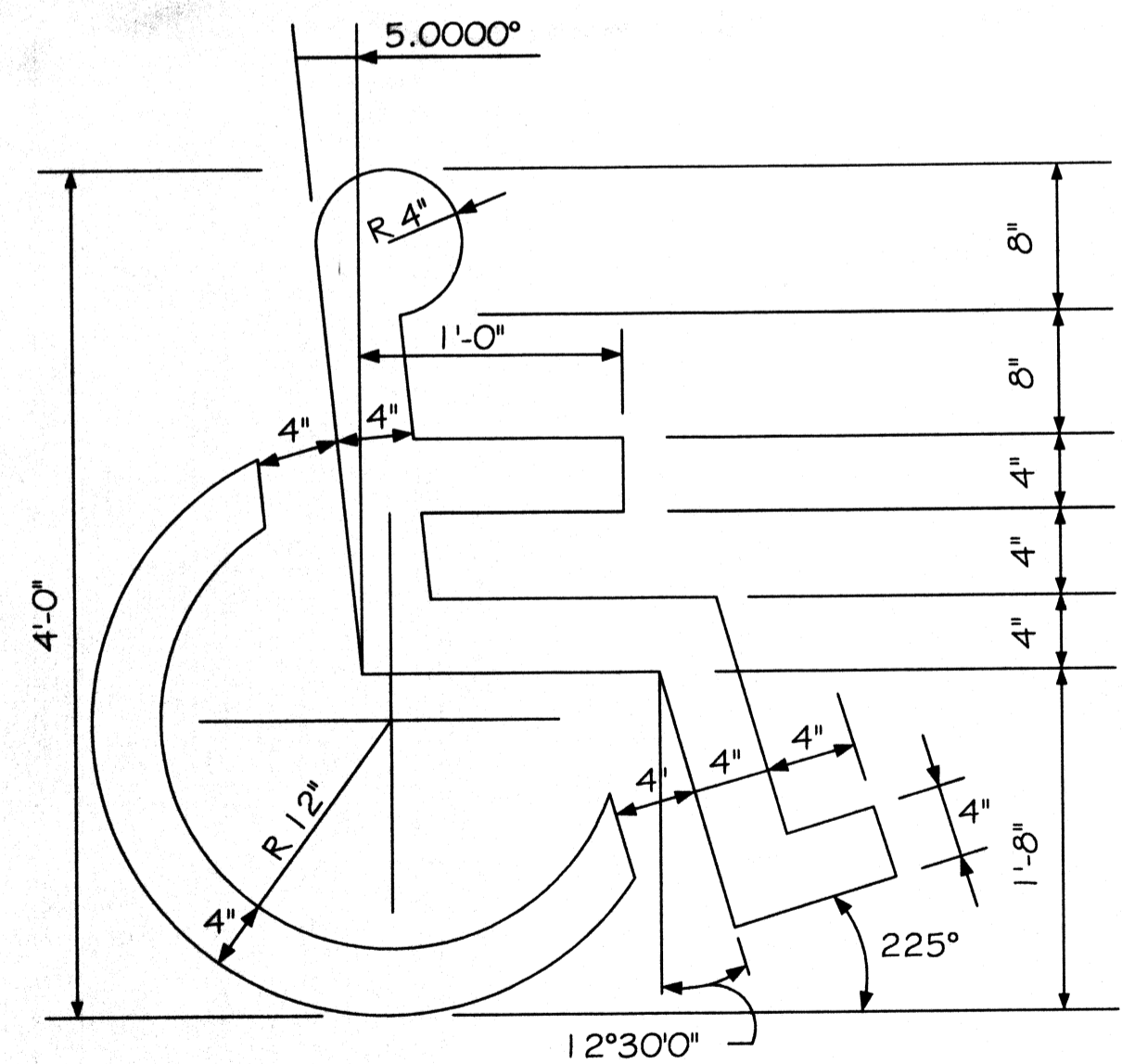


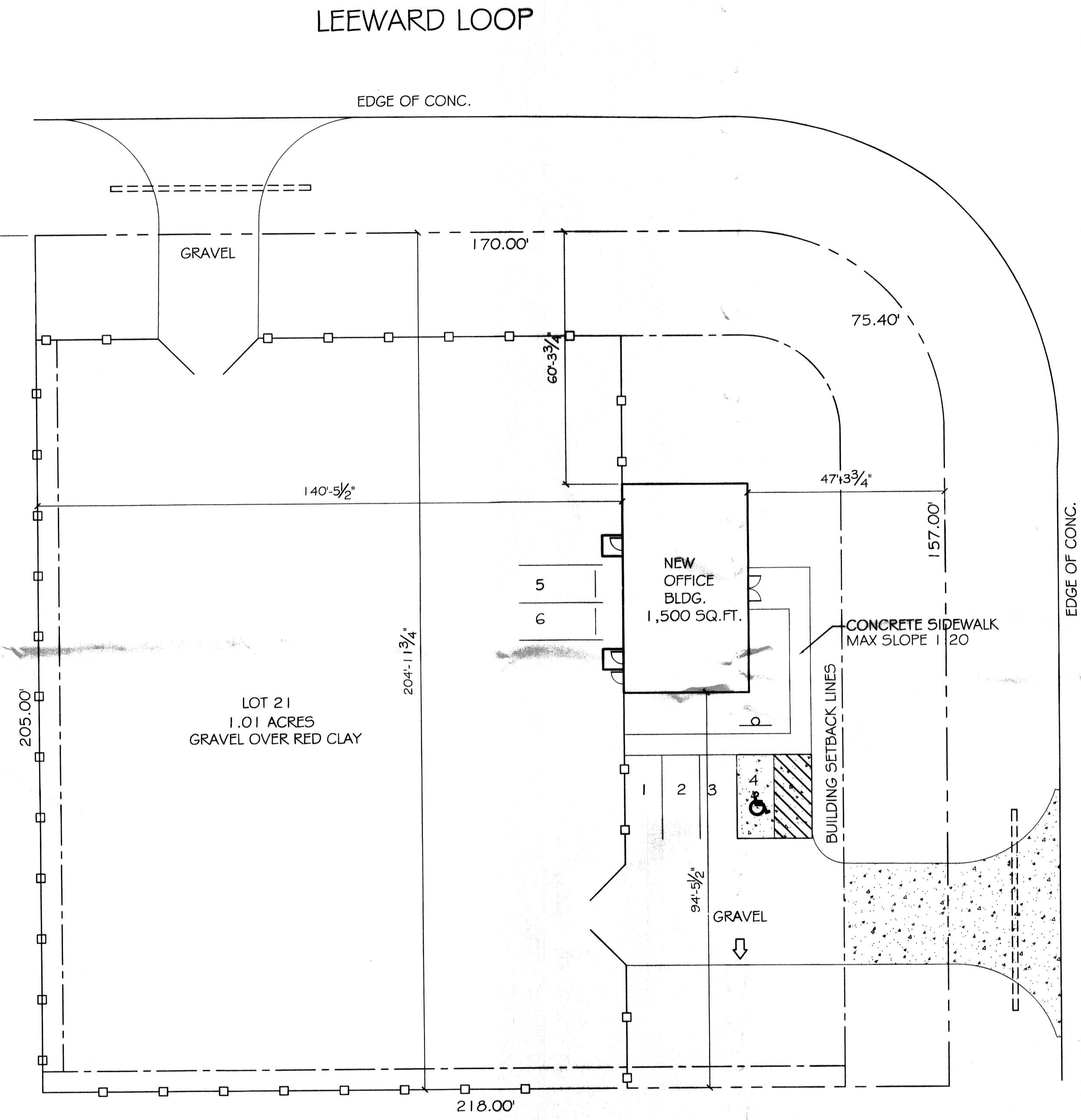
HANDICAP PARKING SIGN

N. T. S.



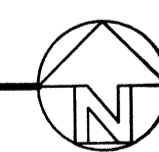
HANDICAP SYMBOL DETAIL

N. T. S.



SITE PLAN

SCALE: 1"=20'



**SITE LIGHTING**  
 EXTERIOR LIGHTING SHALL BE SHADED OR INWARDLY DIRECTED IN SUCH A MANNER SO THAT NO DIRECT LIGHTING OR GLARE BE CAST BEYOND THE PROPERTY LINE. THE INTENSITY OF SUCH LIGHTING SHALL NOT EXCEED ONE FOOT CANDLE AS MEASURED AT THE ABUTTING PROPERTY LINE. (N/A FOR THIS PARTICULAR JOB)

**SITE PLAN NOTES**  
 1. ROOFING MATERIAL: METAL ROOFING PANEL  
 2. SIDING MATERIAL: CONVENTIONAL STUCCO VENEER & METAL PANELS.  
 3. UTILITIES: ALL UTILITIES SHALL BE PLACED UNDERGROUND

**OFFICE/WAREHOUSE PARKING REQUIREMENTS**  
 1 SPACE PER EACH 700 SQ. FT. OF STORAGE AREA PLUS 1 SPACE PER EACH 400 SQ. FT. OF OFFICE, SALES OR OTHER SPACE TO BE USED BY VISITORS, CUSTOMERS OR SALESMEN.  
 1,500 SQ. FT. BUILDING TOTAL  
 WAREHOUSE = 2 PARKING SPACES  
 1,500 SQ. FT. OF SALES = 4 PARKING SPACES  
 TOTAL PARKING PROVIDED = 6

**SITE LEGEND**  
 - - - - - PROPERTY LINE  
 - - - - - BUILDING SETBACK MINIMUM  
 - HANDICAP PARKING  
 - HANDICAP PARKING SIGN  
 - 8' HIGH WOOD FENCE

**DAMMON ENGINEERING, INC.**  
 Architects & Engineers  
 400 LEeward LOOP  
 SUITE 100  
 SUDBURY, LA 70959  
 PHONE: 985-649-5932  
 FAX: 985-641-5950

**LANDIS TRANSPORT LLC OFFICE/WAREHOUSE BUILDING**  
 LOT 21 #400 LEeward LOOP  
 STAMMANY PARISH, COVINGTON, LOUISIANA  
 JOB No: 2164 DATE: 01-30-2013  
 DRAWN BY: CD CHECKED BY: CD

#	DESCRIPTION	DATE

**SITE PLAN**  
 SHEET No: 2 OF 8  
 C1