

POWER PLAN LEGEND		
SYM.	DESCRIPTION	COMMENTS
	STANDARD 120V DUPLEX RECEPTACLE @ 18" AFF (UNLESS NOTED)	
	GFI RECEPTACLE	ALL OUTLETS WITHIN 48" OF A WATER SOURCE SHALL BE GFI
	WEATHER PROOF 120V DUPLEX RECEPT. @ 30" AFF (UNLESS NOTED)	
	POWER DISCONNECT	
	ELECTRIC WATER HEATER SIZE AS NOTED	
	AIR CONDITIONING COND. UNIT SEE MECH SHEETS FOR UNIT DETAILS	
	CEILING FANS	

NOTES:
1. CONNECT ALL EMERGENCY / EXIT LIGHT FIXTURES TO NEAREST CONSTANT POWER SOURCE.

LIGHTING LEGEND

- VENT / LIGHT COMBINATION
- WALL MTD. EMER/EXIT LIGHT W/ 90 MIN. BATT. BACKUP
- LIGHT ABOVE SINK
- LIGHT SWITCH
- THREE WAY LIGHT SWITCH
- CAN LIGHTS

ELECTRICAL NOTES

- ALL WORK SHALL CONFORM TO THE LATEST EDITION OF THE NATIONAL ELECTRICAL CODE, THE GOVERNING ELECTRICAL CODE AND ALL OTHER INSPECTION DEPARTMENTS HAVING JURISDICTION. OBTAIN CERTIFICATES OR APPROVAL WHERE REQUIRED.
- ALL MATERIALS FURNISHED SHALL BE NEW AND SHALL BE U.L. LISTED.
- THE DRAWINGS INDICATE SIZE AND GENERAL LOCATION OF WORK. SCALE DIMENSIONS SHALL NOT BE USED. THE EXACT LOCATION AND LOCATION OF ALL LIGHTING FIXTURES, RECEPTACLES AND TELEPHONE OUTLETS, ETC. SHALL BE DETERMINED BY ACTUAL CONDITIONS IN THE FIELD.
- PRIOR TO BIDDING, CONTRACTOR SHALL VISIT THE JOB SITE AND FAMILIARIZE THEMSELVES WITH THE EXISTING CONDITIONS.
- ELECTRICAL CONTRACTOR SHALL COORDINATE HIS WORK WITH OTHER TRADES AND WITH OTHER CONTRACTORS WHOSE WORK MAY AFFECT THIS INSTALLATION.
- ELECTRICAL CONTRACTOR SHALL COORDINATE INCOMING ELECTRICAL SERVICE WITH UTILITY COMPANY AND INCLUDE IN HIS BID ALL CHARGES AND FEES INCURRED IN MODIFICATIONS.
- WHERE MORE THAN ONE SWITCH OCCURS IN THE SAME LOCATION, THEY SHALL BE INSTALLED IN A GANG TYPE BOX UNDER ONE COVER PLATE.
- ELECTRICAL CONTRACTOR SHALL COORDINATE THE TELEPHONE INSTALLATION WITH THE TELEPHONE COMPANY AND THE GENERAL CONTRACTOR.
- ELECTRICAL CONTRACTOR, BEFORE INSTALLING ANY OF THE WORK, SHALL SEE THAT IT DOES NOT INTERFERE WITH CLEARANCES REQUIRED FOR FINISHED COLUMNS, HUNG CEILING, PLASTER, PARTITIONS, WALLS, ETC. AS SHOWN IN THE ARCHITECTURAL DRAWINGS AND DETAILS. IF ANY WORK IS INSTALLED AND IT LATER DEVELOPS THAT SUCH DETAILS OR DESIGN CANNOT BE FOLLOWED, THE CONTRACTOR, AT HIS OWN EXPENSE, SHALL MAKE SUCH CHANGES IN THE WORK AS DIRECTED BY THE ARCHITECT, AS WELL AS TO PERMIT THE INSTALLATION OF THE ARCHITECTURAL WORK AS SHOWN ON THE PLANS AND DETAILS.
- PERFORM TEST REQUIRED BY THE OWNER OR THE ENGINEER IN CONNECTION WITH THE OPERATION OF THE ELECTRICAL SYSTEM IN THE BUILDING.
- ALL TESTS SHALL BE MADE IN ACCORDANCE WITH THE LATEST STANDARD OF THE IEEE AND THE NATIONAL ELECTRICAL CODE.
- MINIMUM CONDUCTOR SIZE SHALL BE #12, 600V INSULATION. MINIMUM SIZE CONDUIT SHALL BE 3/4" EMT FOR INTERIOR USE, AND 3/4" RIGID ALUMINUM FOR EXTERIOR USE. USE TYPE NMC CABLE COPPER, FOR LIGHTS AND RECEPTACLE CIRCUITS. EXTERIOR FITTINGS SHALL BE CAST BOXES AND COVERS. INTERIOR FITTINGS SHALL BE CAST WHERE EXPOSED ON WALLS. STAMPED BOXES MAY BE USED ABOVE CEILING IN AIR CONDITIONED SPACES. WHERE LAY IN FIXTURES ARE IN USE, USE 1/4" 2 ALLOWED FOR 6" WIDTH.
- CONTRACTOR SHALL INSTALL WIRING AND OTHER CIRCUIT COMPONENTS TO MATCH EQUIPMENT ACTUALLY INSTALLED.
- INSTALL GROUND FAULT RECEPTACLES AT RECEPTACLE LOCATIONS WITHIN 5' OF SINKS OR LAVATORIES, AND AT EXTERIOR LOCATIONS. EXTERIOR RECEPTACLES SHALL ALSO BE WATERPROOF.
- BONDING AND GROUNDING SHALL BE IN ACCORDANCE WITH NFPA 70:230-63, NFPA 250-23, 250-71 & 250-72.
- GROUND NEUTRAL IN ACCORDANCE WITH NFPA 70:250-23b.
- FUSES SHALL BE ITC CLASS K5, 250 VOLT, 200,000 AMP INTERRUPTING CAP.
- PROVIDE SERVICES OF A FIRE/SMOKE DETECTION AND ALARM COMPANY TO DESIGN AND INSTALL ALARM SYSTEM TO MEET REQUIREMENTS OF THE STATE FIRE MARSHALL.
- EXTERIOR LIGHTING SHALL BE SHADED OR INWARDLY DIRECTED IN SUCH A MANNER SO THAT NO DIRECT LIGHTING OR GLARE IS CAST BEYOND THE PROPERTY LINE. THE INTENSITY OF SUCH LIGHTING SHALL NOT EXCEED ONE FOOT CANDLE AS MEASURED AT THE ADJUTING PROPERTY LINE.
- ALL ELECTRICAL, MECHANICAL AND PLUMBING PENETRATING FIRE PARTITIONS SHALL BE FIRE CAULKED, (PENETRATIONS THROUGH RATED CONSTRUCTION SHALL BE SEALED WITH A MATERIAL CAPABLE OF PREVENTING THE PASSAGE OF FLAMES AND HOT GASES WHEN TESTED IN ACCORDANCE WITH ASTM-E814.)

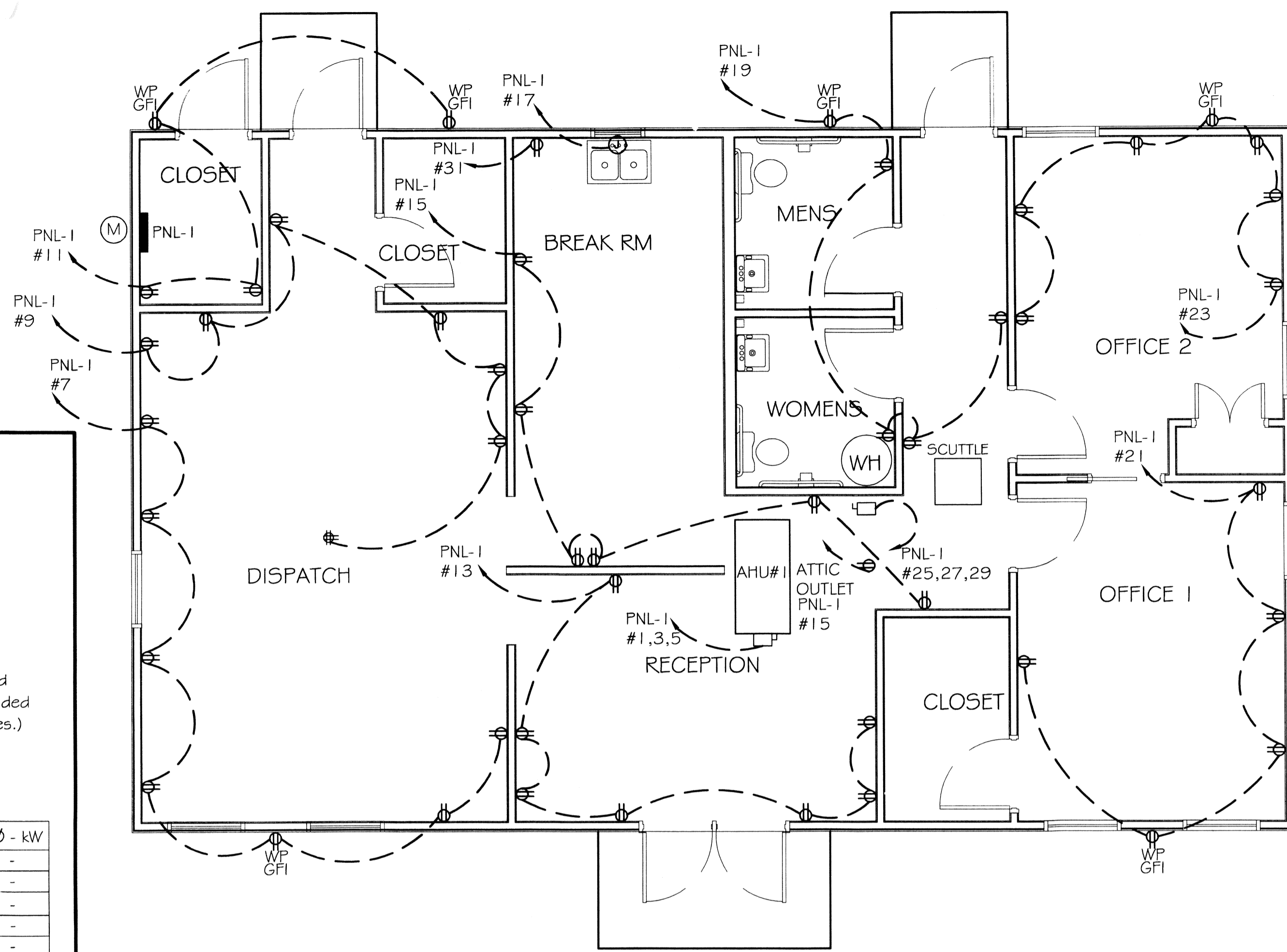
CLECO Power LLC - Electrical Load Summary

Project Name: LANDIS TRANSPORT LLC
 Project Address: LOT 21 #400 LEeward LOOP
 City / Town: ST. TAMMANY PARISH COVINGTON, LOUISIANA

Intended Use: Office/Warehouse Building
 Requested Service: 208 Volts 3 Phase 4 Wires
 Service Entrance Size: 225 Amps
 HVAC Tonnage: 5.00 Tons
 Largest Motor: N/A HP (Note: Motors above 20 hp may require reduced Voltage starting and are never recommended for use with 120/240V, 3 phase, 4W services.)

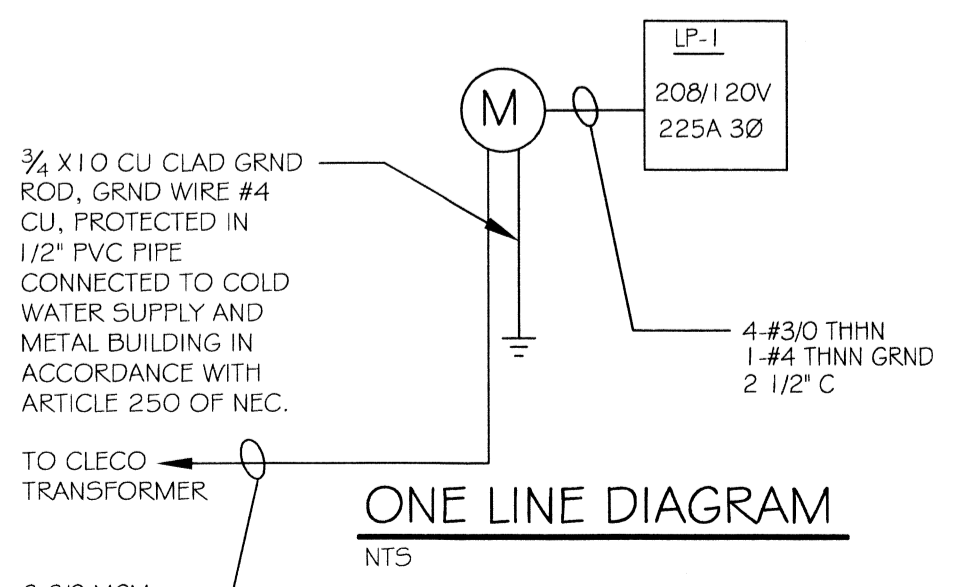
Total Building Square Footage: 1,500 Square Feet
 Individual Unit Square Footage: N/A Square Feet (Multiple Occupancy)
 Individual Unit Designation: N/A (Multiple Occupancy)

LOAD SOURCE	1Ø - kVA	3Ø - kVA	or	1Ø - kW	3Ø - kW
Building Lighting	-	15,000	or	-	-
Electric Water Heating	-	7,200	or	-	-
Heat Pumps	-	-	or	-	-
Supplemental Heat System	-	-	or	-	-
Air Conditioning Condensing Units	-	9,600	or	-	-
Electrical Heating (Primary) - AHUs	-	10,800	or	-	-
Cooking	-	-	or	-	-
Refrigeration	-	160	or	-	-
Receptacles (Standard)	-	7,840	or	-	-
Receptacles (Computer)	-	-	or	-	-
Total Motors (Exclude HVAC)	-	-	or	-	-
Exterior Lighting	-	600	or	-	-
Miscellaneous - Ceiling Fans	-	-	or	-	-
Other (Specify)	-	-	or	-	-

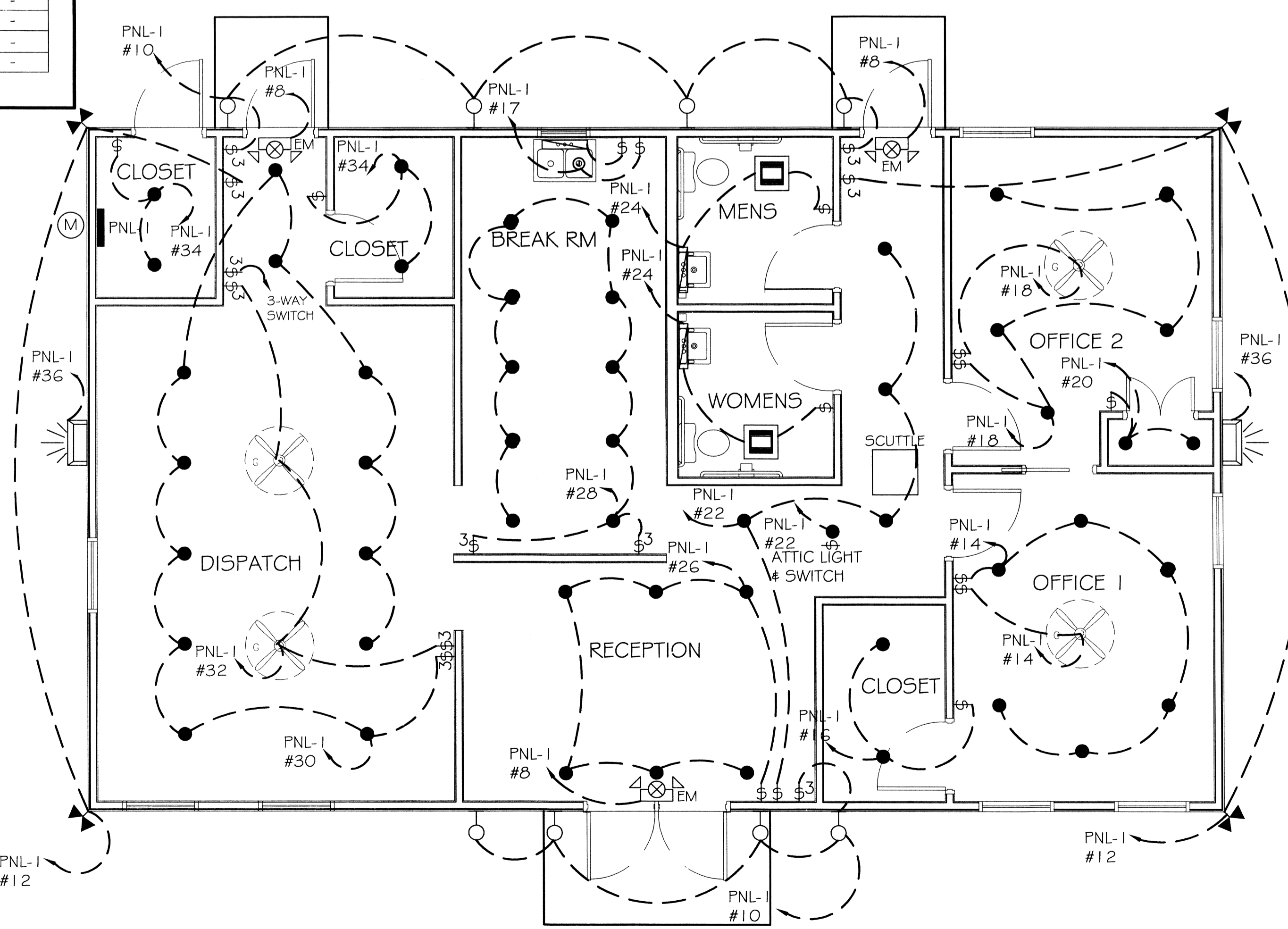


POWER PLAN
SCALE: 1/4" = 1'

PANEL: PANEL 1		LOCATION: EXTERIOR CLOSET		FEEDER SOURCE: CLECO		VOLTAGE: 208/120V, 225A 3Ø, 4W		ENCLOSURE: SURFACE MOUNTED W/EQUIPMENT GND BAR		W/ 225 MAIN BRK. 22000 AIC NEMA	
CT. NO.	THHN WIRE SIZE	LOAD DESCRIPTION	BREAKER	LOAD (KVA)	LOAD (KVA)	BREAKER	LOAD DESCRIPTION	THHN WIRE SIZE	CT. NO.		
1				3200	3600				2		
3	#2	A/C COMPRESSOR	30 3	3200	3600	60	HEATER 15KW	#2	4		
5				3200	3600				6		
7	#12	DISPATCH ROOM OUTLETS AND EXTERIOR WP GFI OUTLET	20 1	1120	900	20	EXIT EMERGENCY LIGHTS	#12	8		
9	#12	DISPATCH ROOM FLOOR OUTLET AND WALL OUTLETS	20 1	1120	1600	20	EXTERIOR LIGHTING	#12	10		
11	#12	EXTERIOR STORAGE CLOSET AND EXTERIOR WP GFI OUTLETS	20 1	640	800	20	EXTERIOR FLOOD LIGHTS	#12	12		
13	#12	RECEPTION ROOM WALL OUTLETS	20 1	1120	1400	20	OFFICE 1 LIGHTING AND FAN	#12	14		
15	#12	BREAK ROOM, HALLWAY, AND ATTIC OUTLETS	20 1	1120	400	20	OFFICE 1 CLOSET LIGHTING	#12	16		
17	#12	BREAK ROOM GARBAGE DISPOSAL	20 1	160	1200	20	OFFICE 2 LIGHTING AND FAN	#12	18		
19	#12	RESTROOMS HALLWAY OUTLETS, AND EXTERIOR WP GFI OUTLET	20 1	800	400	20	OFFICE 2 CLOSET LIGHTING	#12	20		
21	#12	OFFICE 1 OUTLETS AND EXTERIOR WP GFI OUTLET	20 1	800	800	20	HALLWAY AND ATTIC LIGHTING	#12	22		
23	#12	OFFICE 2 OUTLETS AND EXTERIOR WP GFI OUTLET	25 1	1120	600	20	MENS AND WOMENS RESTROOMS EXHAUST FANS AND LIGHTING	#12	24		
25				2400	1200	20	RECEPTION LIGHTING	#12	26		
27	#12	WATER HEATER	30 1	2400	2000	20	BREAK ROOM LIGHTING	#12	28		
29				2400	2400	20	DISPATCH ROOM LIGHTING	#12	30		
31		REFRIGERATOR	20 1	160	400	100	DISPATCH ROOM FANS	#12	32		
33		SPARE	20 1	-	800	20	EXTERIOR AND DISPATCH ROOM CLOSET LIGHTING	#12	34		
35		SPARE	20 1	-	400	20	EXTERIOR WALL PACK LIGHTING	#12	36		
37		SPACE	-	-	-	-	SPACE	-	38		
39		SPACE	-	-	-	-	SPACE	-	40		
41		SPACE	-	-	-	-	SPACE	-	42		
				TOTAL CONNECTED LOAD (KVA)=51,260				GROUND BUS			
				16,700		17,640		16,720		GROUND WIRE (G)	



ONE LINE DIAGRAM



LIGHTING PLAN
SCALE: 1/4" = 1'

DAMMON
ENGINEERING, INC.
Architects & Engineers

LANDIS TRANSPORT LLC
OFFICE/WAREHOUSE BUILDING
LOT 21 #400 LEeward LOOP
ST. TAMMANY PARISH, COVINGTON, LOUISIANA
ADDRESS LINE 5

NO.	DATE	REVISIONS

ELECTRICAL PLAN

SHEET No: 7 OF 8
E-1