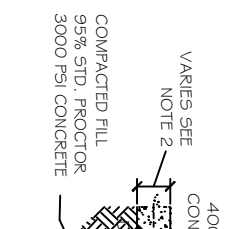
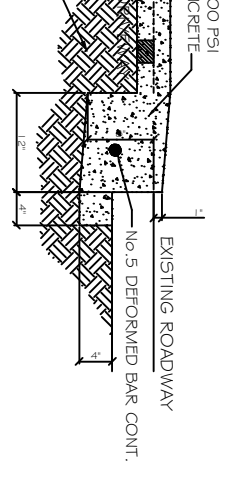


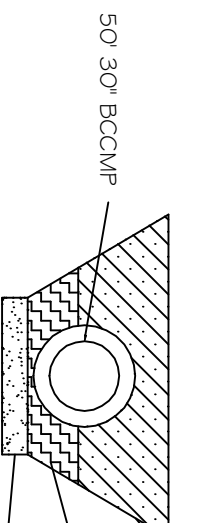
#400 LEEWARD LOOP



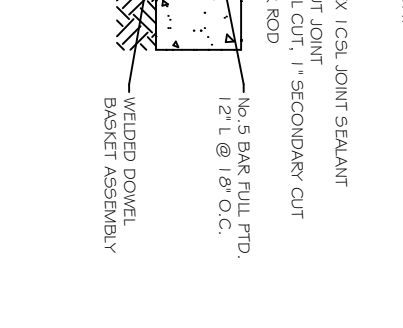
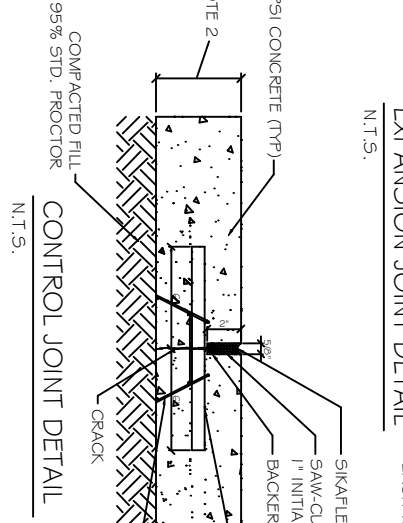
DRIVEWAY SECTION  
N. T. S.



TYPICAL ENTRANCE DETAIL  
N. T. S.



TYPICAL DETAIL FOR  
CULVERTS IN DITCH  
N. T. S.



- PAVING NOTES:**
- 1) ALL NEW CONCRETE SHALL HAVE A MINIMUM COMPRESSIVE STRENGTH OF 4,000 PSI AT 28 DAYS AND A MINIMUM THICKNESS OF 6\"/>
  - 2) CONCRETE PAVING THICKNESS SHALL VARY AS FOLLOWS:
    - a) APRONS = 7\"/>
    - b) PARKING AREAS = 6\"/>
  - 3) ALL REINFORCING STEEL SHALL MEET ASTM-A615 (GRADE 60).
  - 4) ALL REINFORCING STEEL SHALL BE SECURELY SUPPORTED TO PREVENT BOTH VERTICAL AND HORIZONTAL MOVEMENT DURING CONCRETE PLACEMENT. ALL CONTROL AND EXPANSION JOINTS SHALL BE LOCATED AND INSTALLED AS SHOWN ON THE PAVING PLAN AND IN ACCORDANCE WITH THE MANUFACTURER'S RECOMMENDATIONS.
  - 5) ALL SUB GRADE FILL SHALL BE SELECT GRANULAR MATERIAL COMPACTED TO 95% STANDARD PROCTOR DENSITY IN A MAXIMUM OF 6\"/>
  - 6) CONTRACTOR SHALL CONTACT THEIR REGULATORY DEPARTMENT OF ENGINEERING PRIOR TO CONDUCTING ANY WORK.
  - 7) ANY WORK WITHIN THE ROADWAY OR ADJACENT TO THE ROADWAY CAUSING AN INTERFERENCE TO VEHICULAR TRAFFIC REQUIRES PRIOR APPROVAL FROM THE CITY TRAFFIC ENGINEERING DIVISION, AND MUST CONFORM TO THE REQUIREMENTS SET FORTH BY THE UNIFORM MANUAL OF TRAFFIC CONTROL DEVICES OF THE STATE OF LOUISIANA. THE CONTRACTOR MUST FURNISH ALL NECESSARY TRAFFIC SIGNS AND/OR BARRICADES AND MAINTAIN THEM DURING CONSTRUCTION ACTIVITY.

LANDIS TRANSPORT LLC  
OFFICE/WAREHOUSE BUILDING

LOT 21 #400 LEEWARD LOOP  
ST. TAMMANY PARISH COVINGTON LOUISIANA

JOB No: 2164 DATE: 01-30-2013  
DRAWN BY: JCT CHECKED BY: CD



CHIEF ENGINEER: EMMETT DAMMON, P.E.  
CHIEF ARCHITECT: KEVIN KINCHEN  
554 OLD SPANISH TRAIL  
SLIDEL, LA 70458

dammoneengineering.com  
dammoneing@bellsouth.net  
PHONE: 985-649-5832  
FAX: 985-641-5950

#	DESCRIPTION	DATE

SITE &  
UTILITY  
PLAN

SHEET No: 3 OF 9

C2