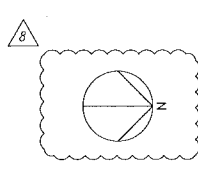
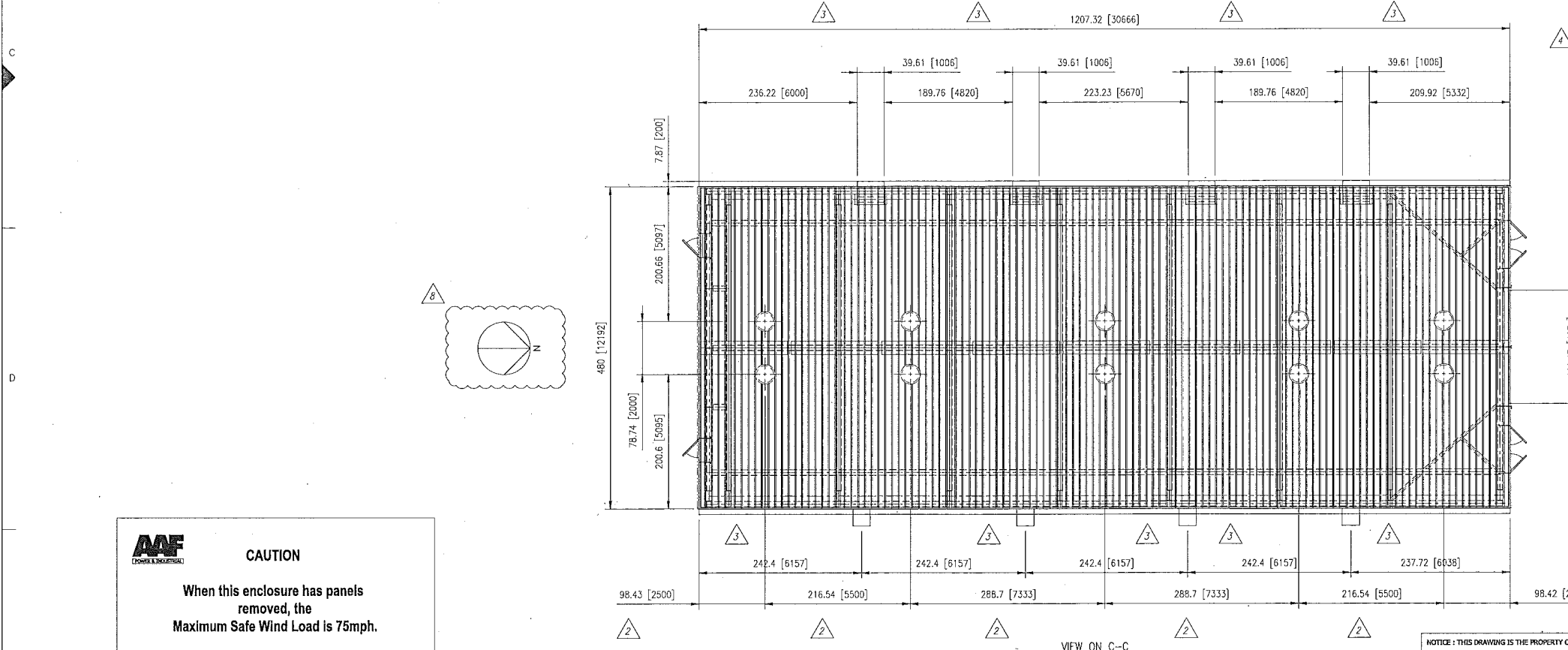
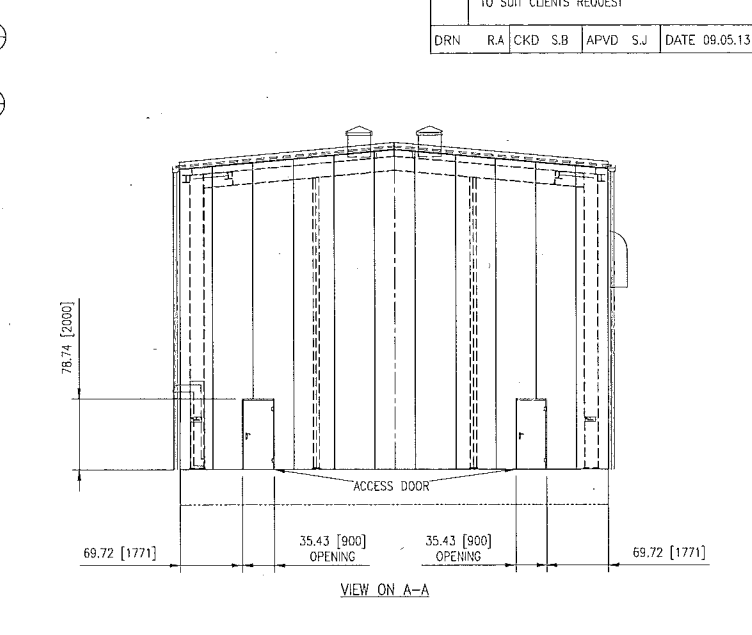
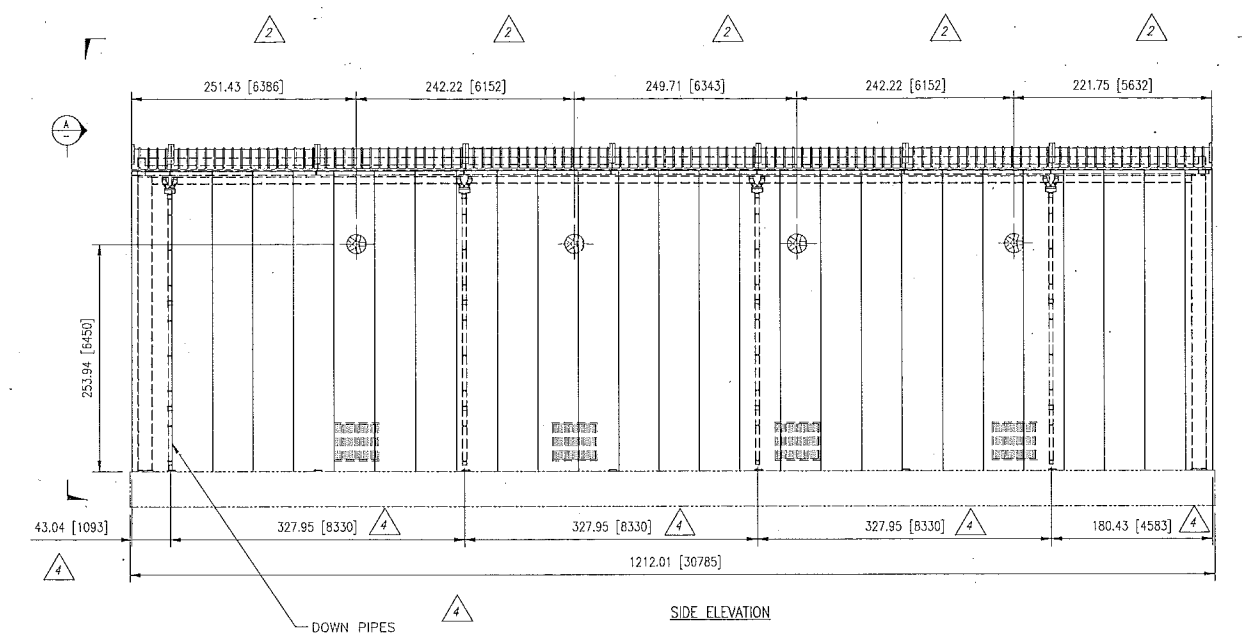
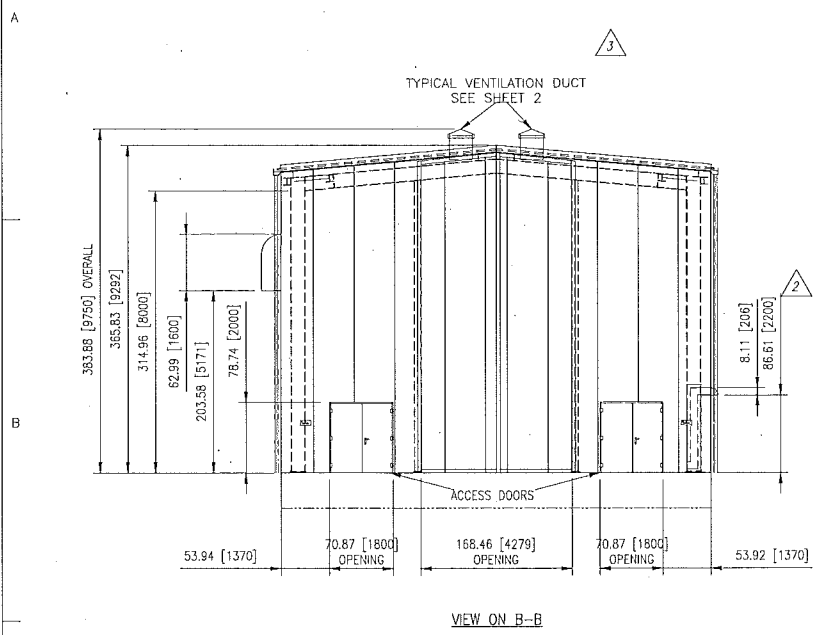


NOT TO BE SCALED IF IN DOUBT ASK

REV	REVISION	REV	REVISION	REV	REVISION	REV	REVISION	REV	REVISION	REV	REVISION		
7	ISO VIEW OF TEMPORARY COVER PLATE ADDED TO SHEET 2.	6	GASKET AND ANGLE REMOVED AND 450mm DIA DEK-TITE SEAL REPLACED WITH 650mm DIA ON ENCLOSURE ROOF VENTILATION DUCT DETAIL	5	REVISED AT CLIENTS REQUEST	4	NOTES UPDATED, DIMENSIONS & TITLES ADDED. SETTING OUT PROVIDED FOR DOWN PIPES AS PER CLIENTS REQUEST. SILENCER LOCATIONS UPDATED	3	DIMENSIONS AND NOTES ADDED INLET SILENCER DETAILS ADDED TO SHEET 2 AS PER CLIENT COPIES	2	ROOF PANELS AND DIMENSION CHANGES	1	FIRST ISSUE
DRN	RA CKD S.B APVD S.B DATE 13.02.13	DRN	ARH CKD SB APVD SB DATE 29.01.13	DRN	ARH CKD SB APVD SB DATE 15.01.13	DRN	RA CKD SB APVD SB DATE 14.01.13	DRN	ARH CKD SB APVD SB DATE 16.10.12	DRN	ARH CKD SB APVD SB DATE 08.10.12	DRN	S.B CKD RA APVD J.K DATE 20.08.12
REV	REVISION												
8	PLANT NORTH SYMBOL MOVED TO SUIT CLIENTS REQUEST												
DRN	RA CKD S.B APVD S.J	DATE 09.05.13											



**CAUTION**

When this enclosure has panels removed, the Maximum Safe Wind Load is 75mph.

DETAILS OF CAUTION PLATE 1:40

	Project: Ninemile Unit 6
Job No.: 143209	
CB&I #: 143209-P6 10-01-00223 Issue: F	
Client #:	
Vendor #: GB00208120 - SHEET 1 OF 2	
Equipment/Tag No.:	SORVD Number: NPV
Review Status:	
<input type="checkbox"/> For Information	<input type="checkbox"/> Accepted as Noted (Do Not Resubmit)
<input checked="" type="checkbox"/> Accepted	<input type="checkbox"/> Accepted As Certified
<input type="checkbox"/> Accepted as Noted (Resubmit)	<input type="checkbox"/> Revise & Resubmit
Released For: <input type="checkbox"/> Design <input type="checkbox"/> Material Procurement <input checked="" type="checkbox"/> Fabrication <input type="checkbox"/> Construction	
Eng Review Due Date: 5/30/2013 2:58:50 PM	
Signed By: <i>Beatty, Ken</i>	Beatty, Ken
Date: 21/05/13	
THE ACCEPTANCE OF THIS DATA DOES NOT RELIEVE THE (SUB)CONTRACTOR OR SUPPLIER FROM THE OBLIGATION IMPOSED BY THE PURCHASE ORDER (PO) OR (SUB) CONTRACT	

Dammon Engineering, Inc.  
554 Old Spanish Trail Slidell, LA 70458

NOTE  
ALL DIMENSIONS IN INCHES [MILLIMETRES]

FIRST ANGLE PROJECTION	TITLE	DRAWING SIZE - A1 DRAWING REV - 8.0	
	ARRANGEMENT OF STG ACOUSTIC ENCLOSURE	FIRST ORDER NUMBER	MX12027
TOLERANCES UNLESS OTHERWISE STATED PART AND FABRICATION TOLERANCES TO BE IN ACCORDANCE WITH AAF-LTD'S STANDARD ENGR0030	TOSHIBA INTERNATIONAL (EUROPE) Ltd Ninemile USA	DRAWING NUMBER	GB00208120
WEIGHTS STATED ON THIS DRAWING ARE FOR AAF-LTD GUIDANCE AND DO NOT FORM THE BASIS OF A CONTRACT BETWEEN AAF-LTD AND THE SUB-CONTRACTOR		SCALE	1:100
		DRAWN BY	DATE
		20.08.12	20.08.12
		CHECKED BY	DATE
		20.08.12	20.08.12
		APPROVED BY	DATE
		20.08.12	20.08.12