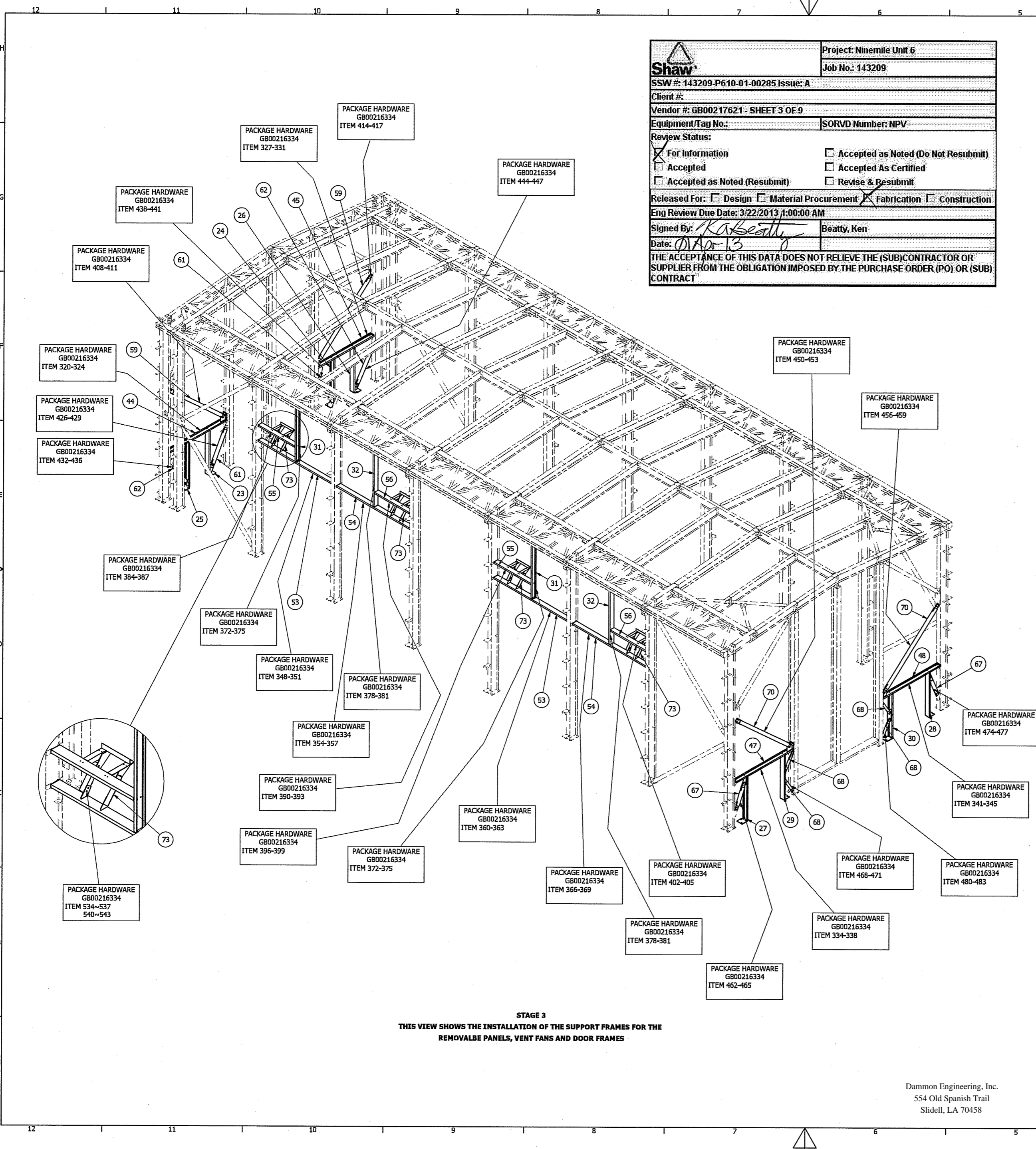


REVISION HISTORY		REVISION HISTORY	REVISION HISTORY	REVISION HISTORY	REVISION HISTORY
REV	DESCRIPTION	DRAWN BY	CHECKED BY	APPROVED	DATE
1	FIRST ISSUE	W.W.	B.H.	S.B.	17.01.13
2	DRAWING & QUANTITIES UPDATED	R.A.	S.B.	S.B.	06.02.13

Shaw Project: Ninemile Unit 6
 Job No.: 143209
 SSW #: 143209-P610-01-00285 Issue: A
 Client #:
 Vendor #: GB00217621 - SHEET 3 OF 9
 Equipment/Tag No.: SORVD Number: NPV
 Review Status:
 For Information Accepted as Noted (Do Not Resubmit)
 Accepted Accepted As Certified
 Accepted as Noted (Resubmit) Revise & Resubmit
 Released For: Design Material Procurement Fabrication Construction
 Eng Review Due Date: 3/22/2013 1:00:00 AM
 Signed By: *Ken Beauty* Beauty, Ken
 Date: *01/13*
 THE ACCEPTANCE OF THIS DATA DOES NOT RELIEVE THE (SUB)CONTRACTOR OR SUPPLIER FROM THE OBLIGATION IMPOSED BY THE PURCHASE ORDER (PO) OR (SUB) CONTRACT



75	1	GB00211582	BEAM MARKED 211582-21X
74	1	GB00211582	BEAM MARKED 211582-21
73	8	GB00211583	BRACING MARKED 211583-15
72	2	GB00211583	BRACING MARKED 211583-14
71	2	GB00211583	BRACING MARKED 211583-13
70	2	GB00211583	BRACING MARKED 211583-12
69	2	GB00211583	BRACING MARKED 211583-11
68	4	GB00211583	BRACING MARKED 211583-10
67	2	GB00211583	BRACING MARKED 211583-9
66	8	GB00211583	BRACING MARKED 211583-8
65	2	GB00211583	BRACING MARKED 211583-7
64	2	GB00211583	BRACING MARKED 211583-6
63	2	GB00211583	BRACING MARKED 211583-5
62	2	GB00211583	BRACING MARKED 211583-4
61	2	GB00211583	BRACING MARKED 211583-3
60	2	GB00211583	BRACING MARKED 211583-2
59	2	GB00211583	BRACING MARKED 211583-1
58	2	GB00211582	BEAM MARKED 211582-20X
57	2	GB00211582	BEAM MARKED 211582-20
56	2	GB00211582	BEAM MARKED 211582-19X
55	2	GB00211582	BEAM MARKED 211582-19
54	2	GB00211582	BEAM MARKED 211582-18X
53	2	GB00211582	BEAM MARKED 211582-18
52	1	GB00211582	BEAM MARKED 211582-17
51	2	GB00211582	BEAM MARKED 211582-16
50	1	GB00211582	BEAM MARKED 211582-15
49	6	GB00211582	BEAM MARKED 211582-14
48	1	GB00211582	BEAM MARKED 211582-13X
47	1	GB00211582	BEAM MARKED 211582-13
46	1	GB00211582	BEAM MARKED 211582-12
45	1	GB00211582	BEAM MARKED 211582-11X
44	1	GB00211582	BEAM MARKED 211582-11
43	1	GB00211582	BEAM MARKED 211582-10
42	6	GB00211582	BEAM MARKED 211582-9
41	1	GB00211582	BEAM MARKED 211582-8X
40	1	GB00211582	BEAM MARKED 211582-8
39	2	GB00211582	BEAM MARKED 211582-7
38	6	GB00211582	BEAM MARKED 211582-6
37	2	GB00211582	BEAM MARKED 211582-5
36	12	GB00211582	BEAM MARKED 211582-4
35	6	GB00211582	BEAM MARKED 211582-3
34	1	GB00211582	BEAM MARKED 211582-2
33	1	GB00211582	BEAM MARKED 211582-1
32	2	GB00211581	COLUMN MARKED 211581-20X
31	2	GB00211581	COLUMN MARKED 211581-20
30	1	GB00211581	COLUMN MARKED 211581-19X
29	1	GB00211581	COLUMN MARKED 211581-19
28	1	GB00211581	COLUMN MARKED 211581-18X
27	1	GB00211581	COLUMN MARKED 211581-18
26	1	GB00211581	COLUMN MARKED 211581-17X
25	1	GB00211581	COLUMN MARKED 211581-17
24	1	GB00211581	COLUMN MARKED 211581-16X
23	1	GB00211581	COLUMN MARKED 211581-16
22	1	GB00211581	COLUMN MARKED 211581-15
21	1	GB00211581	COLUMN MARKED 211581-14
20	1	GB00211581	COLUMN MARKED 211581-13
19	1	GB00211581	COLUMN MARKED 211581-12
18	1	GB00211581	COLUMN MARKED 211581-11X
17	1	GB00211581	COLUMN MARKED 211581-11
16	2	GB00211581	COLUMN MARKED 211581-10
15	2	GB00211581	COLUMN MARKED 211581-9
14	1	GB00211581	COLUMN MARKED 211581-8
13	1	GB00211581	COLUMN MARKED 211581-7X
12	1	GB00211581	COLUMN MARKED 211581-7
11	1	GB00211581	COLUMN MARKED 211581-6X
10	1	GB00211581	COLUMN MARKED 211581-6
9	1	GB00211581	COLUMN MARKED 211581-5X
8	1	GB00211581	COLUMN MARKED 211581-5
7	1	GB00211581	COLUMN MARKED 211581-4
6	1	GB00211581	COLUMN MARKED 211581-3X
5	1	GB00211581	COLUMN MARKED 211581-3
4	1	GB00211581	COLUMN MARKED 211581-2X
3	1	GB00211581	COLUMN MARKED 211581-2
2	1	GB00211581	COLUMN MARKED 211581-1X
1	1	GB00211581	COLUMN MARKED 211581-1

NOTICE: THIS DRAWING IS THE PROPERTY OF AAF LTD AND IS LOANED SUBJECT TO THE CONDITION THAT IT SHALL NOT BE COPIED, LOANED OR SUBMITTED TO OUTSIDE PARTIES FOR EXAMINATION WITHOUT WRITTEN CONSENT

FIRST ANGLE PROJECTION

TOLERANCES UNLESS OTHERWISE STATED PART AND FABRICATION TOLERANCES TO BE IN ACCORDANCE WITH AAF-LTD'S STANDARD ENDS/DRAWING

WEIGHTS STATED ON THIS DRAWING ARE FOR AAF-LTD'S GUIDANCE AND DO NOT FORM THE BASIS OF A CONTRACT BETWEEN AAF-LTD, AND THE SUB-CONTRACTOR

AAFL
POWER & INDUSTRIAL

CLIENT: TOSHIBA
PROJECT: NINE MILE USA

DRAWING SIZE - A1 DRAWING REV - 2

SCALE 1:75

FIRST ORDER NUMBER MX12027

DRAWING NUMBER GB00217621

DRAWN BY W.W. DATE 03/12/2012

CHECKED BY R.A. DATE 17/01/2013

APPROVED BY S.B. DATE 21/01/2013

Sheet 3 of 9

Dammon Engineering, Inc.
554 Old Spanish Trail
Slidell, LA 70458