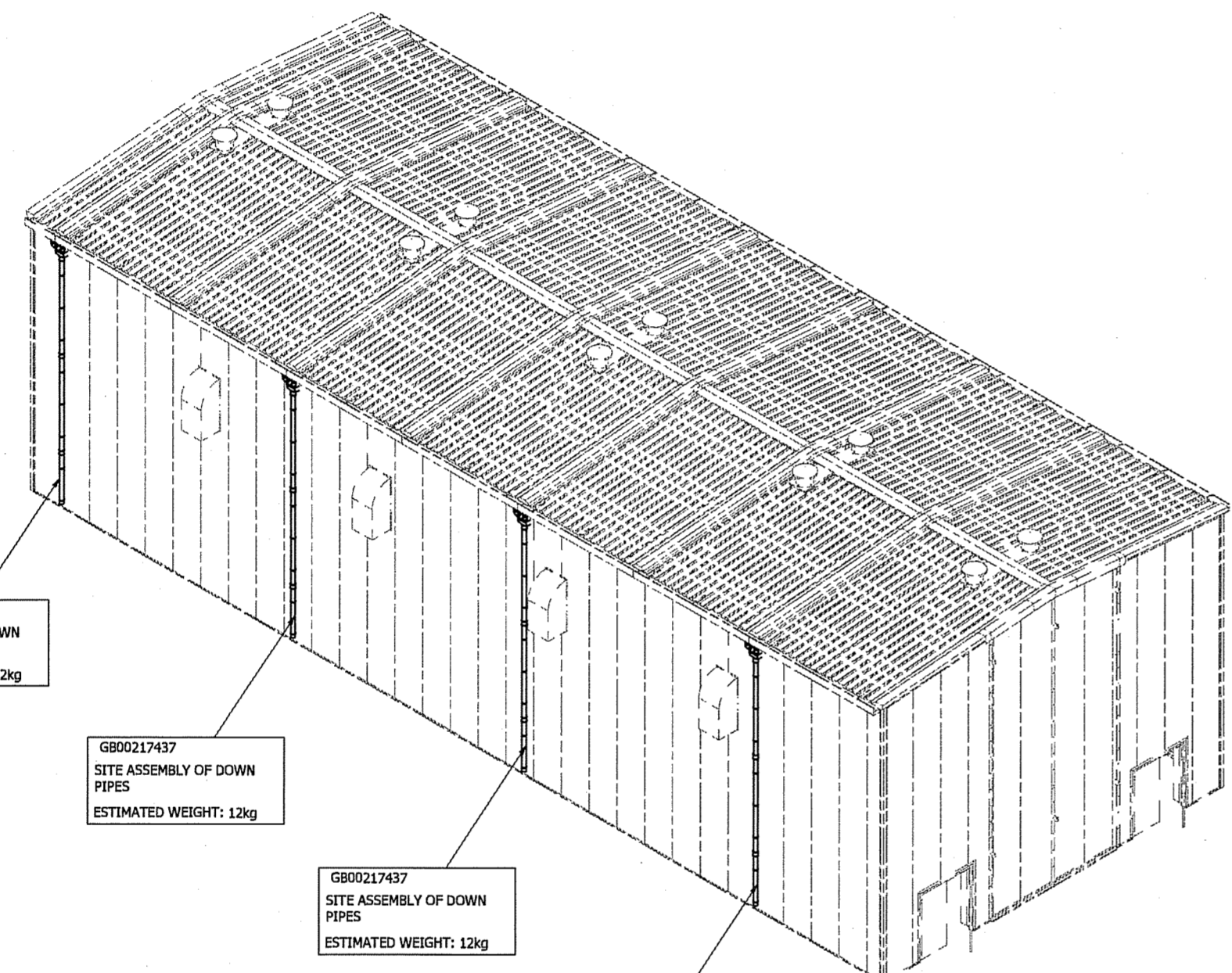


REVISION HISTORY					
REV	DESCRIPTION	DRAWN BY	CHECKED BY	APPROVED	DATE
1	FIRST ISSUE	W.W	B.H	S.B	17.01.13
2	DRAWING & QUANTITIES UPDATED	R.A	S.B	S.B	06.02.13

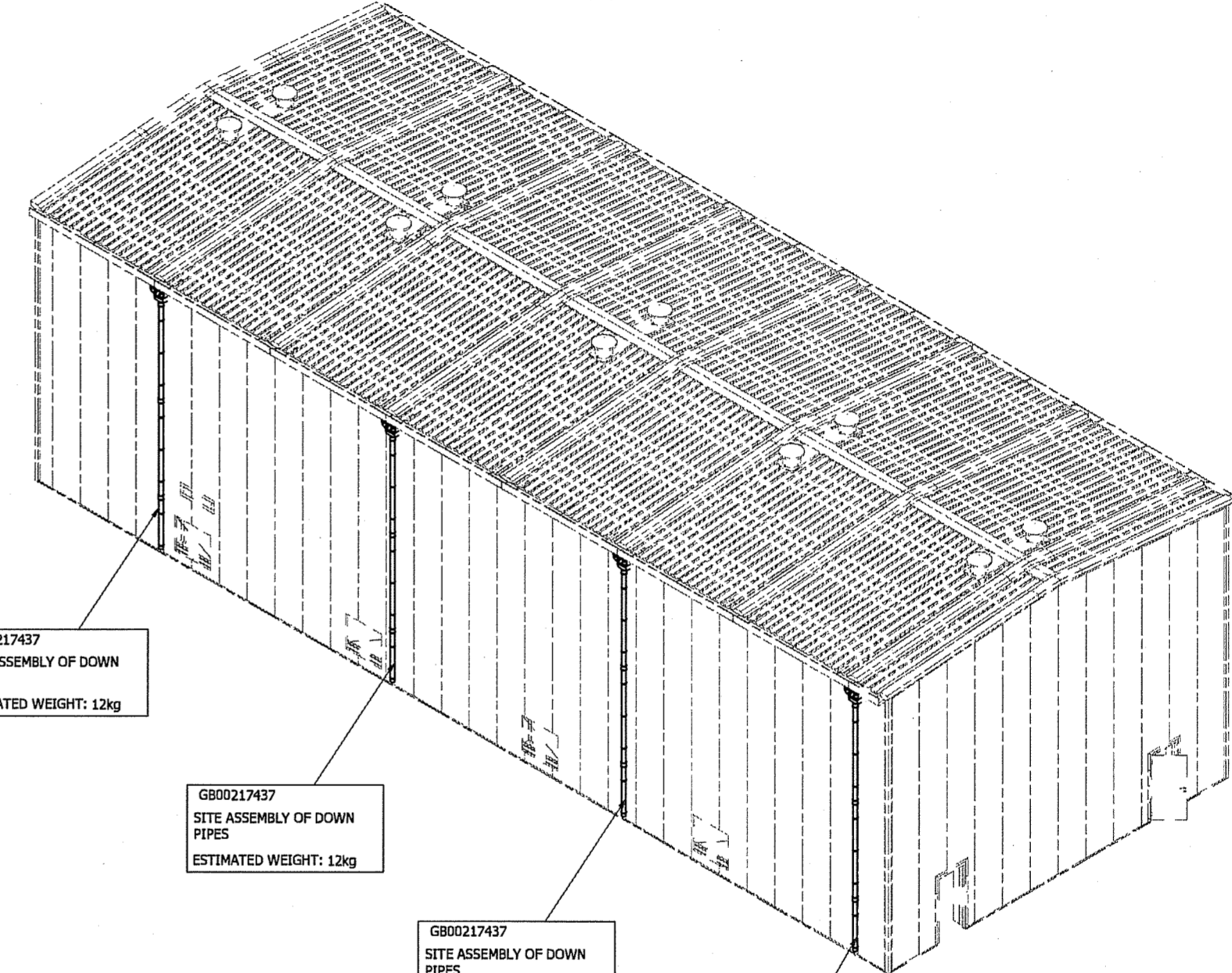


GB00217437
SITE ASSEMBLY OF DOWN
PIPES
ESTIMATED WEIGHT: 12kg

GB00217437
SITE ASSEMBLY OF DOWN
PIPES
ESTIMATED WEIGHT: 12kg

GB00217437
SITE ASSEMBLY OF DOWN
PIPES
ESTIMATED WEIGHT: 12kg

GB00217437
SITE ASSEMBLY OF DOWN
PIPES
ESTIMATED WEIGHT: 12kg



GB00217437
SITE ASSEMBLY OF DOWN
PIPES
ESTIMATED WEIGHT: 12kg

GB00217437
SITE ASSEMBLY OF DOWN
PIPES
ESTIMATED WEIGHT: 12kg

GB00217437
SITE ASSEMBLY OF DOWN
PIPES
ESTIMATED WEIGHT: 12kg

GB00217437
SITE ASSEMBLY OF DOWN
PIPES
ESTIMATED WEIGHT: 12kg

STAGE 11
THIS VIEW SHOWS INSTALLATION OF THE DOWN PIPES

	Project: Ninemile Unit 6
SSW #: 143209-P610-01-00291 Issue: A	Job No.: 143209
Client #:	
Vendor #: GB00217621 - SHEET 9 OF 9	
Equipment/Tag No.:	SORVD Number: NPV
Review Status:	
<input checked="" type="checkbox"/> For Information	<input type="checkbox"/> Accepted as Noted (Do Not Resubmit)
<input type="checkbox"/> Accepted	<input type="checkbox"/> Accepted As Certified
<input type="checkbox"/> Accepted as Noted (Resubmit)	<input type="checkbox"/> Revise & Resubmit
Released For: <input type="checkbox"/> Design <input type="checkbox"/> Material Procurement <input checked="" type="checkbox"/> Fabrication <input type="checkbox"/> Construction	
Eng Review Due Date: 3/22/2013 1:00:00 AM	
Signed By: <i>Ken Beaty</i>	Beatty, Ken
Date: 01/20/13	
THE ACCEPTANCE OF THIS DATA DOES NOT RELIEVE THE (SUB)CONTRACTOR OR SUPPLIER FROM THE OBLIGATION IMPOSED BY THE PURCHASE ORDER (PO) OR (SUB) CONTRACT	

Dammon Engineering, Inc.
554 Old Spanish Trail
Slidell, LA 70458

NOTICE: THIS DRAWING IS THE PROPERTY OF AAF LTD AND IS LOANED SUBJECT TO THE CONDITION THAT IT SHALL NOT BE COPIED, LOANED OR SUBMITTED TO OUTSIDE PARTIES FOR EXAMINATION WITHOUT WRITTEN CONSENT	
FIRST ANGLE PROJECTION	TITLE ISO BUILD SEQUENCE OF ACOUSTIC ENCLOSURE
TOLERANCES UNLESS OTHERWISE STATED PART AND FABRICATION TOLERANCES TO BE IN ACCORDANCE WITH AAF-LTD'S STANDARD ENGR300	CLIENT: TOSHIBA PROJECT: NINE MILE USA
WEIGHTS STATED ON THIS DRAWING ARE FOR AAF-LTD GUIDANCE AND DO NOT FORM THE BASIS OF A CONTRACT BETWEEN AAF-LTD AND THE SUB-CONTRACTOR	DRAWING SIZE - A1 DRAWING REV - 2
	FIRST ORDER NUMBER MX12027
SCALE 1:100	DRAWING NUMBER GB00217621
DRAWN BY W.W DATE 03/12/2012	
CHECKED BY R.A DATE 17/01/2013	
APPROVED BY S.B DATE 21/01/2013	