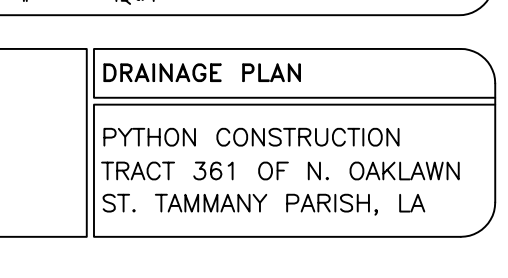
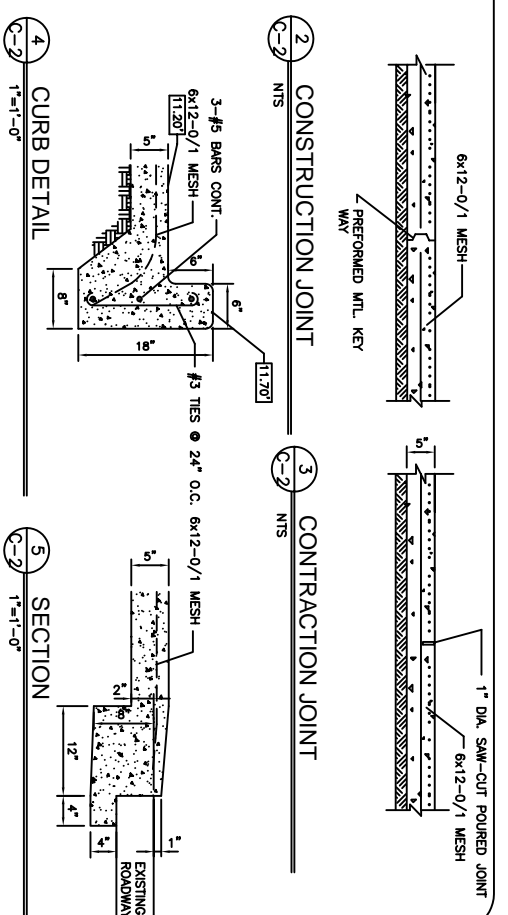


LEGEND

- W- -W- EXISTING 12" WATER LINE
- S- -S- EXISTING 8" SEWER LINE
- E- -E- EXISTING ELECTRICAL
- P- -P- PROPERTY LINE
- L- -L- SETBACK LINE
- - - NEW BUILDING
- - - HANDICAPPED PARKING
- - - CATCH BASIN
- - - TOP OF GRATE
- - - INVERT ELEVATION
- - - NEW ELEVATION
- - - 1" PVC PIPE UNDERGROUND FOR LOW LEVEL LANDSCAPE LIGHTING
- - - SLOPE LINE



PROJECT: Python Construction

DRAINAGE RUNOFF CALCULATIONS - RATIONAL METHOD

PRIOR DEVELOPMENT

25 Year Frequency

Watershed Area (A) =	0.9	sqft =	0.000 Acres
Green Surface (S1) =	0.35	sqft =	2.826 Acres
Green Space (S2) =	0.35	sqft =	2.826 Acres
Summary C =	0.35	sqft =	2.826 Acres

Q₁ = CA

Watershed Area (A) = 0.9

Green Surface (S1) = 0.35

Green Space (S2) = 0.35

Summary C = 0.35

25 Year Frequency

Q₁ = 0.45

Q₂ = CA

Watershed Area (A) = 0.9

Green Surface (S1) = 0.35

Green Space (S2) = 0.35

Summary C = 0.35

25 Year Frequency

Q₂ = 0.45

Q₃ = CA

Watershed Area (A) = 0.9

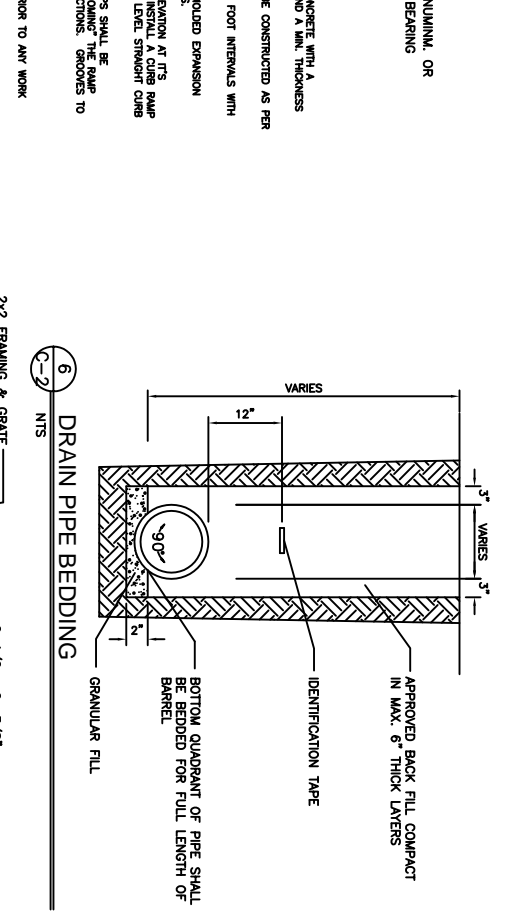
Green Surface (S1) = 0.35

Green Space (S2) = 0.35

Summary C = 0.35

25 Year Frequency

Q₃ = 0.45



Q₄ = CA

Watershed Area (A) = 0.9

Green Surface (S1) = 0.35

Green Space (S2) = 0.35

Summary C = 0.35

25 Year Frequency

Q₄ = 0.45

Q₅ = CA

Watershed Area (A) = 0.9

Green Surface (S1) = 0.35

Green Space (S2) = 0.35

Summary C = 0.35

25 Year Frequency

Q₅ = 0.45

Q₆ = CA

Watershed Area (A) = 0.9

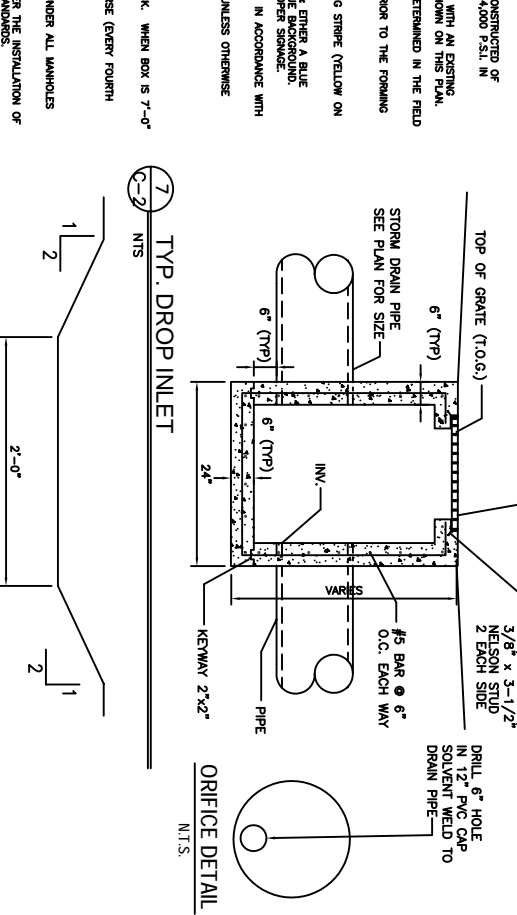
Green Surface (S1) = 0.35

Green Space (S2) = 0.35

Summary C = 0.35

25 Year Frequency

Q₆ = 0.45



Q₇ = CA

Watershed Area (A) = 0.9

Green Surface (S1) = 0.35

Green Space (S2) = 0.35

Summary C = 0.35

25 Year Frequency

Q₇ = 0.45

Q₈ = CA

Watershed Area (A) = 0.9

Green Surface (S1) = 0.35

Green Space (S2) = 0.35

Summary C = 0.35

25 Year Frequency

Q₈ = 0.45

Q₉ = CA

Watershed Area (A) = 0.9

Green Surface (S1) = 0.35

Green Space (S2) = 0.35

Summary C = 0.35

25 Year Frequency

Q₉ = 0.45

Q₁₀ = CA

Watershed Area (A) = 0.9

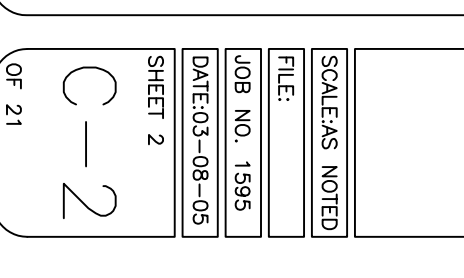
Green Surface (S1) = 0.35

Green Space (S2) = 0.35

Summary C = 0.35

25 Year Frequency

Q₁₀ = 0.45



REVISIONS:

- 10-22-07
- 01-30-08

SCALE: AS NOTED

FILE:

JOB NO. 1595

DATE: 03-08-05

SHEET 2

C-2

OF 21

OFFICE/WAREHOUSE

DAMMON ENGINEERING, INC.

1095 FLORIDA AVENUE 985-649-5832 SLIDELL, LA. 70458

DAMMONENGINEERING.COM

DRAINAGE PLAN

PYTHON CONSTRUCTION

TRACT 361 OF N. OAKLAWN

ST. TAMMANY PARISH, LA