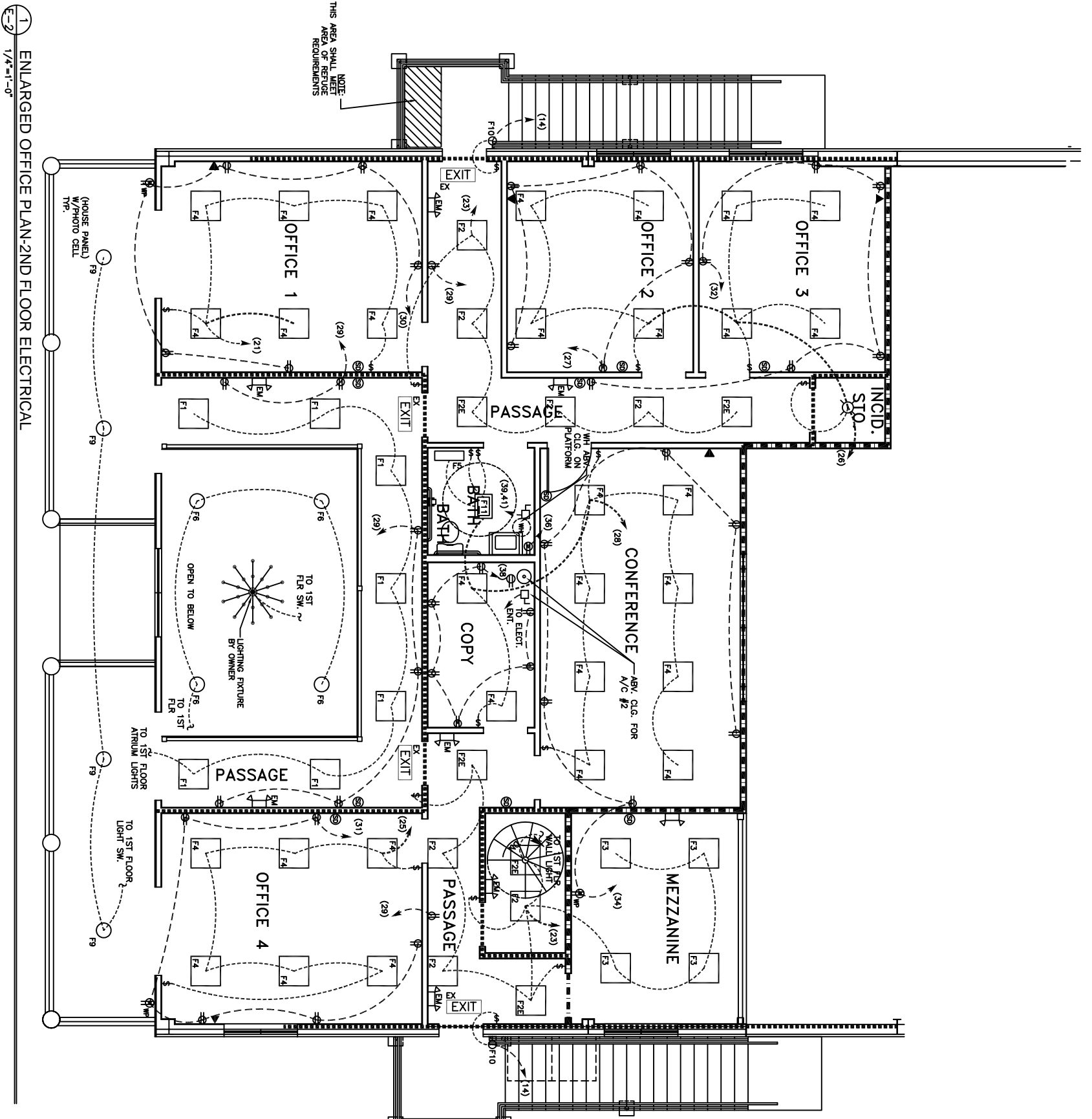


ELECTRICAL NOTES

1. ALL WORK SHALL CONFORM TO THE LATEST EDITION OF THE NATIONAL ELECTRICAL CODE, THE GOVERNING ELECTRICAL CODE, AND ALL OTHER INSPECTION DEPARTMENTS HAVING JURISDICTION. OBTAIN CERTIFICATES OR APPROVAL WHERE REQUIRED.
2. ALL MATERIALS FURNISHED SHALL BE NEW AND SHALL BE U.L. LISTED.
3. THE DRAWINGS INDICATE SIZE AND GENERAL LOCATION OF WORK. SCALE DIMENSIONS SHALL NOT BE USED. THE EXACT LOCATION AND ELEVATION OF ALL LIGHTING FIXTURES, RECEPTACLES AND TELEPHONE OUTLETS, ETC. SHALL BE DETERMINED BY ACTUAL CONDITIONS IN THE FIELD, UNLESS NOTED OTHERWISE.
4. PRIOR TO BIDDING, CONTRACTOR SHALL VISIT THE JOB SITE AND FAMILIARIZE THEMSELVES WITH THE EXISTING CONDITIONS.
5. ELECTRICAL CONTRACTOR SHALL COORDINATE HIS WORK WITH OTHER TRADES AND WITH OTHER CONTRACTORS WHOSE WORK MAY AFFECT THIS INSTALLATION.
6. ELECTRICAL CONTRACTOR SHALL COORDINATE INCOMING ELECTRICAL SERVICE WITH UTILITY COMPANY AND INCLUDE IN HIS BID ALL CHARGES AND FEES INCURRED IN MODIFICATIONS.
7. WHERE MORE THAN ONE SWITCH OCCURS IN THE SAME LOCATION, THEY SHALL BE INSTALLED IN A GANG TYPE BOX UNDER ONE COVER PLATE.
8. ELECTRICAL CONTRACTOR SHALL COORDINATE THE TELEPHONE INSTALLATION WITH THE TELEPHONE COMPANY AND THE GENERAL CONTRACTOR.
9. ELECTRICAL CONTRACTOR, BEFORE INSTALLING ANY OF THE WORK, SHALL SEE THAT IT DOES NOT INTERFERE WITH CLEARANCES REQUIRED FOR FINISHED COLUMNS, HUNG CEILINGS, PLASTER, PARTITIONS, WALLS, ETC. AS SHOWN IN THE ARCHITECTURAL DRAWINGS AND DETAILS. IF ANY WORK IS INSTALLED AND IT LATER DEVELOPS THAT SUCH DETAILS OR DESIGN CANNOT BE FOLLOWED, THE CONTRACTOR, AT HIS OWN EXPENSE, SHALL MAKE SUCH CHANGES IN THE WORK AS DIRECTED BY THE ARCHITECT, AS WELL AS TO PERMIT THE INSTALLATION OF THE ARCHITECTURAL WORK AS SHOWN ON THE PLANS AND DETAILS.
10. PERFORM TEST REQUIRED BY THE OWNER OR THE ENGINEER IN CONNECTION WITH THE OPERATION OF THE ELECTRICAL SYSTEM IN THE BUILDING.
11. ALL TESTS SHALL BE MADE IN ACCORDANCE WITH THE LATEST STANDARD OF THE IEEE AND THE NATIONAL ELECTRICAL CODE.
12. MINIMUM CONDUCTOR SIZE SHALL BE #12, 600V INSULATION. MINIMUM SIZE CONDUIT SHALL BE 3/4" EMT FOR INTERIOR USE, AND 3/4" RIGID ALUMINUM FOR EXTERIOR USE. USE TYPE NMC CABLE IN CONTROL RM. BLDG. FOR LIGHTS & RECEPTACLE CIRCUITS. EXTERIOR FITTINGS SHALL BE CAST BOXES AND COVERS. INTERIOR FITTINGS SHALL BE CAST WHERE EXPOSED ON WALLS. STAMPED BOXES MAY BE USED ABOVE CEILINGS IN AIR CONDITIONED SPACES.
13. CONTRACTOR SHALL INSTALL WIRING AND OTHER CIRCUIT COMPONENTS TO MATCH EQUIPMENT ACTUALLY INSTALLED.
14. INSTALL GROUND FAULT RECEPTACLES AT RECEPTACLE LOCATIONS WITHIN 5' OF SINKS OR LAVATORIES, AND AT EXTERIOR LOCATIONS. EXTERIOR RECEPTACLES SHALL ALSO BE WEATHERPROOF.
15. BONDING AND GROUNDING SHALL BE IN ACCORDANCE WITH NFPA 70:230-63, NFPA 250-23, 250-71, & 250-72.
16. GROUND NEUTRAL IN ACCORDANCE WITH NFPA 70:250-23b.
17. FUSES SHALL BE ITC CLASS K5, 250 VOLT, 200,000 AMP INTERRUPTING CAP.
18. PROVIDE SERVICES OF A FIRE/SMOKE DETECTION & ALARM COMPANY TO DESIGN & INSTALL ALARM SYSTEM TO MEET REQUIREMENTS OF THE STATE FIRE MARSHALL.
19. ALL ELECTRICAL, MECHANICAL & PLUMBING PENETRATING FIRE WALLS SHALL BE FIRE CALKED. (PENETRATIONS THROUGH RATED CONSTRUCTION SHALL BE SEALED WITH A MATERIAL CAPABLE OF PREVENTING THE PASSAGE OF FLAMES AND HOT GASES WHEN TESTED IN ACCORDANCE WITH ASTM-E814.)

LEGEND

- ⚡ - SWITCH
- ⚡ - THREE-WAY SWITCH
- ⚡ - DUPLEX OUTLET
- ⚡ - GFI OUTLET
- ⚡ - WEATHERPROOF OUTLET
- ⚡ - OVEN OUTLET
- ⚡ - LIGHT
- ⚡ - VENT/LIGHT
- ⚡ - 2 X 2 FLUORESCENT LIGHT
- ⚡ - RECESSED CAN LIGHT
- ⚡ - ILLUM. EXIT SIGN - CLG. MOUNTED W/ 90 MIN. BACKUP
- ⚡ - PULL CHAIN LIGHT IN ATTIC
- ⚡ - INCANDESCENT CHANDELER
- ☎ - TELEPHONE/COMPUTER/CABLE TV
- ⚡ - POWER PANEL
- ⚡ - SMOKE DETECTOR-UL #295 WIRED TO 110V. CIRCUIT
- ⚡ - THERMOSTAT
- ⚡ - JUNCTION BOX
- ⚡ - DISCONNECT SWITCH
- ⚡ - HOT WATER HEATER WITH DISCONNECT SWITCH
- ⚡ - EMERGENCY LIGHT W/ 90 MIN BACKUP
- ⚡ - WALL WTD. FLUORESCENT FIXTURE
- ⚡ - 250V HPS HIGH BAY LIGHT
- ⚡ - EXTERIOR LIGHT W/ 90 MINUTE BATTERY BACKUP



LIGHTING FIXTURE SCHEDULE

TYPE	MFR.	CATALOG NUMBER	MOUNTING	LAMP TYPE
F1	AMER. FLUOR.	CM4339C	SURFACE	F32T8
F2	COOPER	26220A-1S-102-GL-U	RECESSED	T12
F3	COOPER	W420A-1S-102-GL-U	RECESSED	T12
F4	COOPER	W420A-1S-102-GL-U	SURFACE	F40CW/RS/WM
F5	LITHONIA	W420A-1S-102-GL-U	SURFACE	F40CW/RS/WM
F6	LITHONIA	W420A-1S-102-GL-U	SURFACE	F40CW/RS/WM
F7	LITHONIA	W420A-1S-102-GL-U	SURFACE	F40CW/RS/WM
F8	LITHONIA	W420A-1S-102-GL-U	SURFACE	F40CW/RS/WM
F9	LITHONIA	W420A-1S-102-GL-U	SURFACE	F40CW/RS/WM
F10	LITHONIA	W420A-1S-102-GL-U	SURFACE	F40CW/RS/WM
F11	LITHONIA	W420A-1S-102-GL-U	SURFACE	F40CW/RS/WM
F12	LITHONIA	W420A-1S-102-GL-U	SURFACE	F40CW/RS/WM
F13	LITHONIA	W420A-1S-102-GL-U	SURFACE	F40CW/RS/WM
F14	LITHONIA	W420A-1S-102-GL-U	SURFACE	F40CW/RS/WM
F15	LITHONIA	W420A-1S-102-GL-U	SURFACE	F40CW/RS/WM
F16	LITHONIA	W420A-1S-102-GL-U	SURFACE	F40CW/RS/WM
F17	LITHONIA	W420A-1S-102-GL-U	SURFACE	F40CW/RS/WM
F18	LITHONIA	W420A-1S-102-GL-U	SURFACE	F40CW/RS/WM
F19	LITHONIA	W420A-1S-102-GL-U	SURFACE	F40CW/RS/WM
F20	LITHONIA	W420A-1S-102-GL-U	SURFACE	F40CW/RS/WM
F21	LITHONIA	W420A-1S-102-GL-U	SURFACE	F40CW/RS/WM
F22	LITHONIA	W420A-1S-102-GL-U	SURFACE	F40CW/RS/WM
F23	LITHONIA	W420A-1S-102-GL-U	SURFACE	F40CW/RS/WM
F24	LITHONIA	W420A-1S-102-GL-U	SURFACE	F40CW/RS/WM
F25	LITHONIA	W420A-1S-102-GL-U	SURFACE	F40CW/RS/WM
F26	LITHONIA	W420A-1S-102-GL-U	SURFACE	F40CW/RS/WM
F27	LITHONIA	W420A-1S-102-GL-U	SURFACE	F40CW/RS/WM
F28	LITHONIA	W420A-1S-102-GL-U	SURFACE	F40CW/RS/WM
F29	LITHONIA	W420A-1S-102-GL-U	SURFACE	F40CW/RS/WM
F30	LITHONIA	W420A-1S-102-GL-U	SURFACE	F40CW/RS/WM
F31	LITHONIA	W420A-1S-102-GL-U	SURFACE	F40CW/RS/WM
F32	LITHONIA	W420A-1S-102-GL-U	SURFACE	F40CW/RS/WM
F33	LITHONIA	W420A-1S-102-GL-U	SURFACE	F40CW/RS/WM
F34	LITHONIA	W420A-1S-102-GL-U	SURFACE	F40CW/RS/WM
F35	LITHONIA	W420A-1S-102-GL-U	SURFACE	F40CW/RS/WM
F36	LITHONIA	W420A-1S-102-GL-U	SURFACE	F40CW/RS/WM
F37	LITHONIA	W420A-1S-102-GL-U	SURFACE	F40CW/RS/WM
F38	LITHONIA	W420A-1S-102-GL-U	SURFACE	F40CW/RS/WM
F39	LITHONIA	W420A-1S-102-GL-U	SURFACE	F40CW/RS/WM
F40	LITHONIA	W420A-1S-102-GL-U	SURFACE	F40CW/RS/WM
F41	LITHONIA	W420A-1S-102-GL-U	SURFACE	F40CW/RS/WM
F42	LITHONIA	W420A-1S-102-GL-U	SURFACE	F40CW/RS/WM
F43	LITHONIA	W420A-1S-102-GL-U	SURFACE	F40CW/RS/WM
F44	LITHONIA	W420A-1S-102-GL-U	SURFACE	F40CW/RS/WM
F45	LITHONIA	W420A-1S-102-GL-U	SURFACE	F40CW/RS/WM
F46	LITHONIA	W420A-1S-102-GL-U	SURFACE	F40CW/RS/WM
F47	LITHONIA	W420A-1S-102-GL-U	SURFACE	F40CW/RS/WM
F48	LITHONIA	W420A-1S-102-GL-U	SURFACE	F40CW/RS/WM
F49	LITHONIA	W420A-1S-102-GL-U	SURFACE	F40CW/RS/WM
F50	LITHONIA	W420A-1S-102-GL-U	SURFACE	F40CW/RS/WM
F51	LITHONIA	W420A-1S-102-GL-U	SURFACE	F40CW/RS/WM
F52	LITHONIA	W420A-1S-102-GL-U	SURFACE	F40CW/RS/WM
F53	LITHONIA	W420A-1S-102-GL-U	SURFACE	F40CW/RS/WM
F54	LITHONIA	W420A-1S-102-GL-U	SURFACE	F40CW/RS/WM
F55	LITHONIA	W420A-1S-102-GL-U	SURFACE	F40CW/RS/WM
F56	LITHONIA	W420A-1S-102-GL-U	SURFACE	F40CW/RS/WM
F57	LITHONIA	W420A-1S-102-GL-U	SURFACE	F40CW/RS/WM
F58	LITHONIA	W420A-1S-102-GL-U	SURFACE	F40CW/RS/WM
F59	LITHONIA	W420A-1S-102-GL-U	SURFACE	F40CW/RS/WM
F60	LITHONIA	W420A-1S-102-GL-U	SURFACE	F40CW/RS/WM
F61	LITHONIA	W420A-1S-102-GL-U	SURFACE	F40CW/RS/WM
F62	LITHONIA	W420A-1S-102-GL-U	SURFACE	F40CW/RS/WM
F63	LITHONIA	W420A-1S-102-GL-U	SURFACE	F40CW/RS/WM
F64	LITHONIA	W420A-1S-102-GL-U	SURFACE	F40CW/RS/WM
F65	LITHONIA	W420A-1S-102-GL-U	SURFACE	F40CW/RS/WM
F66	LITHONIA	W420A-1S-102-GL-U	SURFACE	F40CW/RS/WM
F67	LITHONIA	W420A-1S-102-GL-U	SURFACE	F40CW/RS/WM
F68	LITHONIA	W420A-1S-102-GL-U	SURFACE	F40CW/RS/WM
F69	LITHONIA	W420A-1S-102-GL-U	SURFACE	F40CW/RS/WM
F70	LITHONIA	W420A-1S-102-GL-U	SURFACE	F40CW/RS/WM
F71	LITHONIA	W420A-1S-102-GL-U	SURFACE	F40CW/RS/WM
F72	LITHONIA	W420A-1S-102-GL-U	SURFACE	F40CW/RS/WM
F73	LITHONIA	W420A-1S-102-GL-U	SURFACE	F40CW/RS/WM
F74	LITHONIA	W420A-1S-102-GL-U	SURFACE	F40CW/RS/WM
F75	LITHONIA	W420A-1S-102-GL-U	SURFACE	F40CW/RS/WM
F76	LITHONIA	W420A-1S-102-GL-U	SURFACE	F40CW/RS/WM
F77	LITHONIA	W420A-1S-102-GL-U	SURFACE	F40CW/RS/WM
F78	LITHONIA	W420A-1S-102-GL-U	SURFACE	F40CW/RS/WM
F79	LITHONIA	W420A-1S-102-GL-U	SURFACE	F40CW/RS/WM
F80	LITHONIA	W420A-1S-102-GL-U	SURFACE	F40CW/RS/WM
F81	LITHONIA	W420A-1S-102-GL-U	SURFACE	F40CW/RS/WM
F82	LITHONIA	W420A-1S-102-GL-U	SURFACE	F40CW/RS/WM
F83	LITHONIA	W420A-1S-102-GL-U	SURFACE	F40CW/RS/WM
F84	LITHONIA	W420A-1S-102-GL-U	SURFACE	F40CW/RS/WM
F85	LITHONIA	W420A-1S-102-GL-U	SURFACE	F40CW/RS/WM
F86	LITHONIA	W420A-1S-102-GL-U	SURFACE	F40CW/RS/WM
F87	LITHONIA	W420A-1S-102-GL-U	SURFACE	F40CW/RS/WM
F88	LITHONIA	W420A-1S-102-GL-U	SURFACE	F40CW/RS/WM
F89	LITHONIA	W420A-1S-102-GL-U	SURFACE	F40CW/RS/WM
F90	LITHONIA	W420A-1S-102-GL-U	SURFACE	F40CW/RS/WM
F91	LITHONIA	W420A-1S-102-GL-U	SURFACE	F40CW/RS/WM
F92	LITHONIA	W420A-1S-102-GL-U	SURFACE	F40CW/RS/WM
F93	LITHONIA	W420A-1S-102-GL-U	SURFACE	F40CW/RS/WM
F94	LITHONIA	W420A-1S-102-GL-U	SURFACE	F40CW/RS/WM
F95	LITHONIA	W420A-1S-102-GL-U	SURFACE	F40CW/RS/WM
F96	LITHONIA	W420A-1S-102-GL-U	SURFACE	F40CW/RS/WM
F97	LITHONIA	W420A-1S-102-GL-U	SURFACE	F40CW/RS/WM
F98	LITHONIA	W420A-1S-102-GL-U	SURFACE	F40CW/RS/WM
F99	LITHONIA	W420A-1S-102-GL-U	SURFACE	F40CW/RS/WM
F100	LITHONIA	W420A-1S-102-GL-U	SURFACE	F40CW/RS/WM

OFFICE/WAREHOUSE

DAMMON ENGINEERING, INC.

1095 FLORIDA AVENUE 985-649-5832 SLIDELL, LA. 70458
DAMMONENGINEERING.COM

2ND FLOOR ELECTRICAL PLAN

PYTHON CONSTRUCTION
TRACT 361 OF N. OAKLAWN
ST. TAMMANY PARISH, LA

FILE: SCALE:AS NOTED

JOB NO. 1595

DATE:03-08-05

SHEET 16

E-2

OF 21