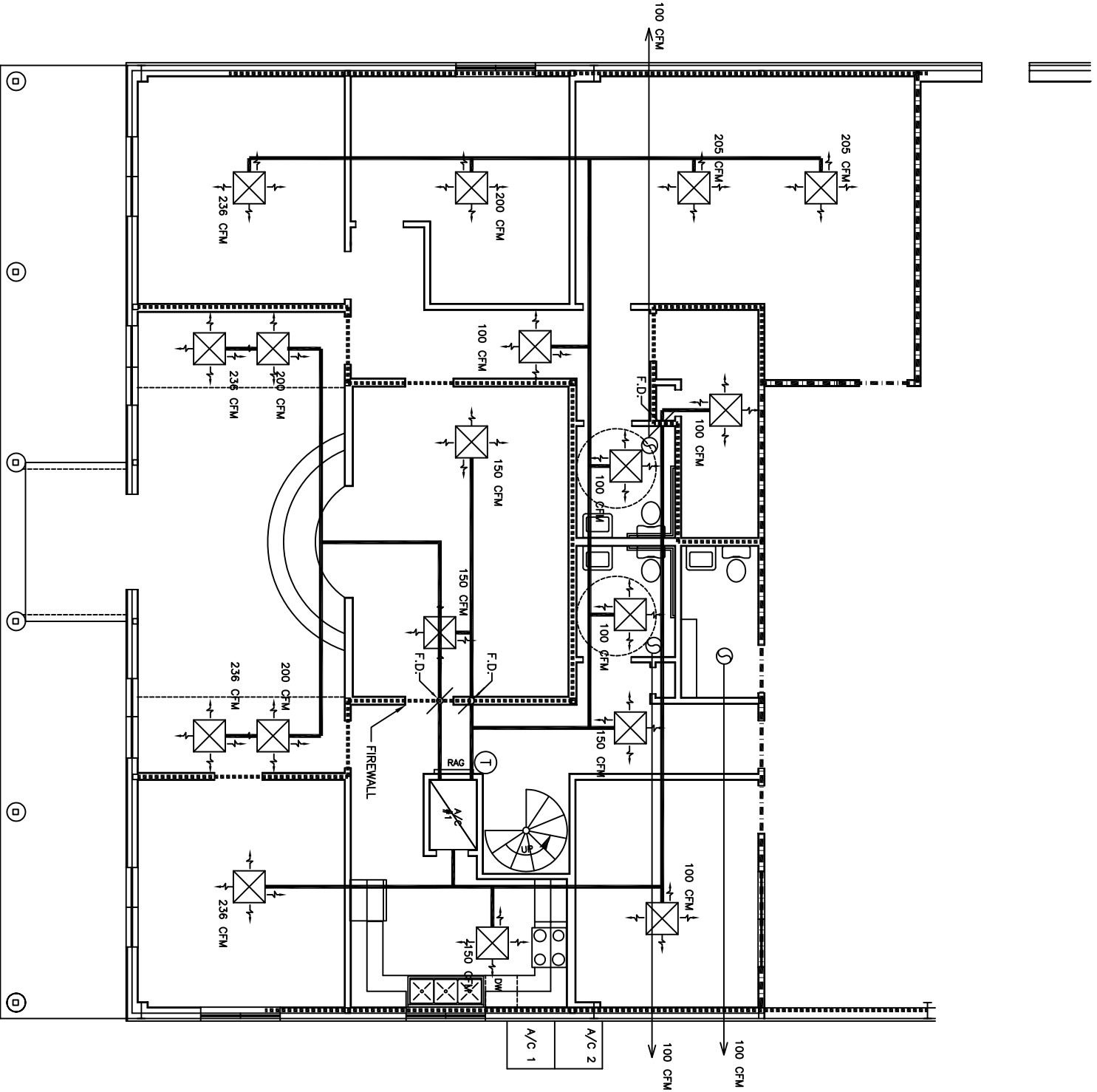


1/4"=1'-0" ENLARGED OFFICE MECHANICAL PLAN-FIRST FLOOR



- NOTE:
1. A/C DUCTS ARE DIAGRAMMATICALLY DRAWN, CONTRACTOR TO FIELD ROUTE DUCTS TO BEST ROUTES AND LOCATIONS.
 2. CONTRACTOR TO VERIFY EQUIPMENT, UTILITY TIE-INS AND ELECTRICAL LOCATIONS WITH OWNER PRIOR TO START OF CONSTRUCTION.

HVAC NOTES

1. CONCEALED DUCTWORK TO BE UL-181, CLASS I, FIBERGLASS DUCTBOARD. DUCTS SHALL BE SIZED PER SMACNA STANDARDS.
2. EXPOSED DUCTWORK TO BE GALVANIZED SHEET METAL PER SMACNA STANDARDS. LINE WITH NEOPRENE COATED 1.0", 1.5 POUNDS PER CUBIC FOOT DUCT INSULATION.
3. ROUND FLEXIBLE DUCT TO BE UL-181, CLASS I, AIR DUCT MATERIALS.
4. DUCT SIZES SHOWN ARE CLEAR INSIDE DIMENSIONS.
5. IN ALL SYSTEMS OVER 2000 CFM AND LESS THAN 15000 CFM, SMOKE DETECTORS SHALL BE INSTALLED IN THE MAIN DUCTWORK. DETECTORS SHALL BE INSTALLED TO AUTOMATICALLY STOP THE FAN.
6. PROVIDE UL LISTED 125 F. FIRE-RATED RETURN AIR ON EACH SYSTEM UNDER 2000 CFM TO SHUT DOWN FAN IN THE EVENT OF FIRE.
7. PROVIDE UL, RATED FIRE DAMPERS WHERE REQUIRED AT ALL DUCT PENETRATIONS OF FIRE-RATED ASSEMBLIES AND WHERE REQUIRED BY CODE, INCLUDING OUTSIDE AIR INTAKES.
8. CONDENSATE DRAINS TO BE PVC PIPE RUN TO PLUMBERS P-TRAP WITHIN FIVE FEET OF AIR HANDLING UNITS.
9. ALL AIR HANDLING SYSTEMS TO BE BALANCED TO ASSURE PROPER AIR FLOWS PER PLANS.
10. ALL THERMOSTATS TO BE AUTOMATIC CHANGEOVER WITH HEAT SYSTEM.
11. EXHAUST FAN EQUAL TO BROAN MODEL NO. 100 OR EQUAL. FAN SHALL BE CONTROLLED BY SWITCH ON WALL AT LIGHT SWITCH. PROVIDE BACK ROBERT DAMPER.
12. PROVIDE AND INSTALL WATERPROOF GRILLE VENT ON ROOF FOR TOILET EXHAUST.
13. ALL SUPPLY AIR VENTS SHALL BE EQUIPPED WITH AIR CONTROL DAMPERS.
14. LOCATION OF OUTDOOR UNITS SHALL BE AS SHOWN ON PLAN. MECHANICAL CONTRACTOR SHALL PROVIDE A 4" CONCRETE REINFORCED PAD FOR EACH CONDENSING UNIT.
15. REFRIGERANT LINES SHALL BE SIZED BY UNIT MANUFACTURER AND INSTALLED ACCORDING TO MANUFACTURERS INSTRUCTIONS.
16. FRESH AIR SHALL BE SUPPLIED TO EACH AIR HANDLER THROUGH ROOF TOP DUCT SUPPLIED WITH A CONTROL DAMPER.
17. INSTALL FIRE DAMPER WHERE S.A. & R.A. DUCTS PENETRATE 1 HR. CEILING AND WALLS.
18. ALL ELECTRICAL, MECHANICAL & PLUMBING PENETRATING FIRE WALLS SHALL BE FIRE CALKED. (PENETRATIONS THROUGH RATED CONSTRUCTION SHALL BE SEALED WITH A MATERIAL CAPABLE OF PREVENTING THE PASSAGE OF FLAMES AND HOT GASES WHEN TESTED IN ACCORDANCE WITH ASTM-E814.)

A/C UNIT SCHEDULE

NO.	TOTAL BTU	CFM	O.A.	HEAT * (KW)	ELECTRICAL		COMMENTS
					VOLTAGE	MCA	
1	96,000	3200	400	15	208V, 3Ø	-	CARRIER 8.0 TON
2	96,000	3200	400	15	208V, 3Ø	-	CARRIER 8.0 TON

* USE 3 STAGE HEAT

EXHAUST FAN SCHEDULE

LOC.	CFM	VOLTAGE	TYPE	MANF.
T1/S	100	120	VENT	BROAN

LEGEND

- SUPPLY AIR
- RETURN AIR
- FIRE DAMPER
- THERMOSTAT

REVISED 01-30-08
REVISED SMOKE DETECTION IN RETURN

1ST FLR. MECHANICAL PLAN

PYTHON CONSTRUCTION
TRACT 361 OF N. OAKLAWN
ST. TAMMANY PARISH, LA

OFFICE/WAREHOUSE
DAMMON ENGINEERING, INC.

1095 FLORIDA AVENUE 985-649-5832 SLIDELL, LA. 70458
DAMMONENGINEERING.COM

SCALE:AS NOTED
FILE:

JOB NO. 1595
DATE:03-08-05

SHEET 18

M-1

OF 21