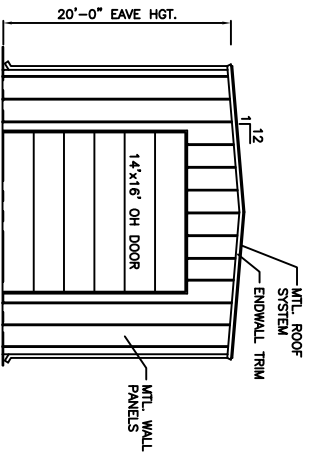
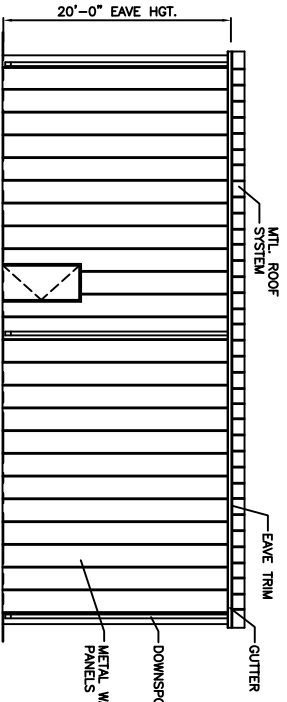


1 FOUNDATION PLAN-EQUIP. STORAGE
A-5 1/8"=1'-0"

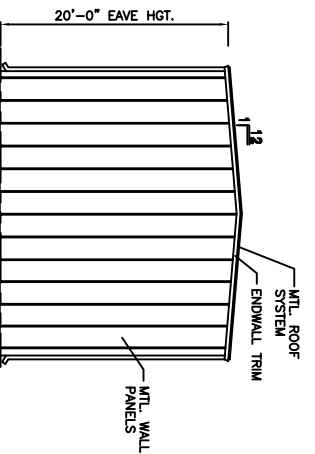
2 FLOOR PLAN-EQUIP. STORAGE
A-5 1/8"=1'-0"



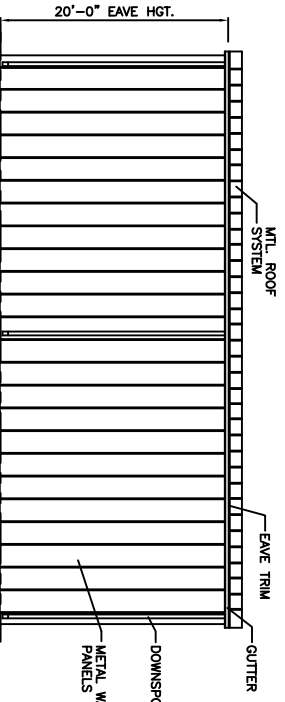
3 FRONT ELEVATION
A-5 1/8"=1'-0"



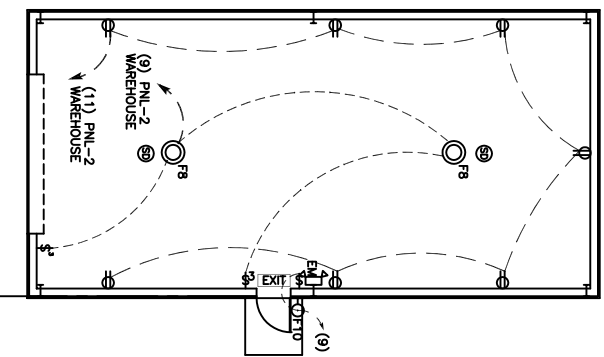
4 SIDE ELEVATION
A-5 1/8"=1'-0"



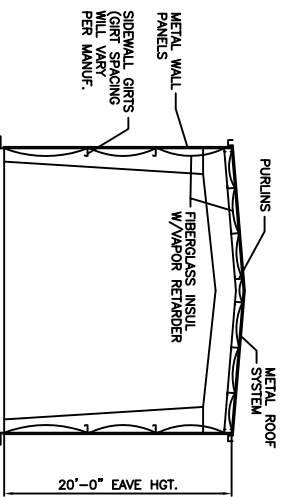
5 REAR ELEVATION
A-5 1/8"=1'-0"



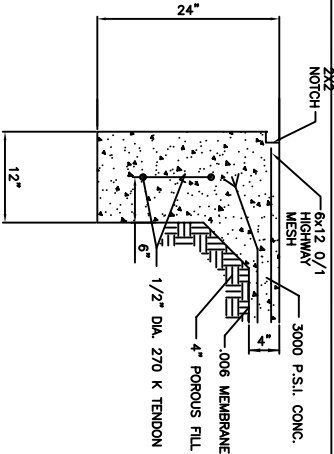
6 SIDE ELEVATION
A-5 1/8"=1'-0"



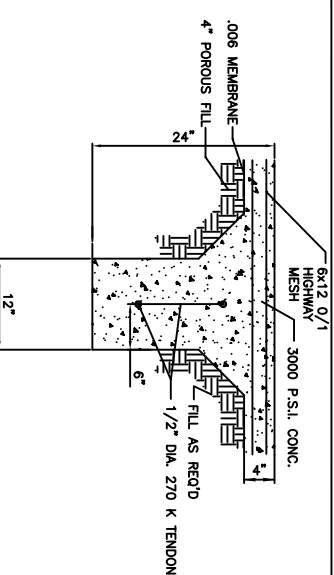
10 ELECTRICAL PLAN
A-5 1/8"=1'-0"



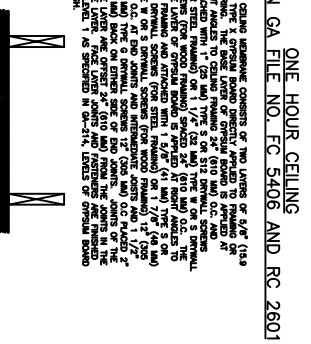
7 SECTION
A-5 1/8"=1'-0"



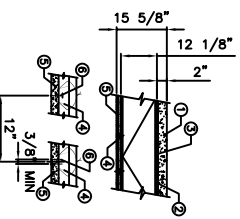
8 SECTION (EXTERIOR BEAMS)
A-5 1"=1'-0"



9 SECTION (INTERIOR BEAMS)
A-5 1"=1'-0"



11 1 HOUR CEILING (FC 5406)
A-5 N.T.S.



12 2 HOUR FLOOR (UL 6501)
A-5 N.T.S.

DESIGN NO. G501
RESTRAINED ASSEMBLY RATING- 1 HR.
UNRESTRAINED ASSEMBLY RATING- 1 HR.

1. GENERAL: REINFORCED CONCRETE - COMPONENT OR STRUCTURE APPROXIMATE: 1500-OR-3 PER YD. WEIGHT, 3000 PSI COMPRESSIVE STRENGTH. REINFORCING STEEL - TYPE 40, 60, 80, 100, 120, 150, 175, 200, 250, 300, 350, 400, 450, 500, 550, 600, 650, 700, 750, 800, 850, 900, 950, 1000, 1050, 1100, 1150, 1200, 1250, 1300, 1350, 1400, 1450, 1500, 1550, 1600, 1650, 1700, 1750, 1800, 1850, 1900, 1950, 2000, 2050, 2100, 2150, 2200, 2250, 2300, 2350, 2400, 2450, 2500, 2550, 2600, 2650, 2700, 2750, 2800, 2850, 2900, 2950, 3000, 3050, 3100, 3150, 3200, 3250, 3300, 3350, 3400, 3450, 3500, 3550, 3600, 3650, 3700, 3750, 3800, 3850, 3900, 3950, 4000, 4050, 4100, 4150, 4200, 4250, 4300, 4350, 4400, 4450, 4500, 4550, 4600, 4650, 4700, 4750, 4800, 4850, 4900, 4950, 5000, 5050, 5100, 5150, 5200, 5250, 5300, 5350, 5400, 5450, 5500, 5550, 5600, 5650, 5700, 5750, 5800, 5850, 5900, 5950, 6000, 6050, 6100, 6150, 6200, 6250, 6300, 6350, 6400, 6450, 6500, 6550, 6600, 6650, 6700, 6750, 6800, 6850, 6900, 6950, 7000, 7050, 7100, 7150, 7200, 7250, 7300, 7350, 7400, 7450, 7500, 7550, 7600, 7650, 7700, 7750, 7800, 7850, 7900, 7950, 8000, 8050, 8100, 8150, 8200, 8250, 8300, 8350, 8400, 8450, 8500, 8550, 8600, 8650, 8700, 8750, 8800, 8850, 8900, 8950, 9000, 9050, 9100, 9150, 9200, 9250, 9300, 9350, 9400, 9450, 9500, 9550, 9600, 9650, 9700, 9750, 9800, 9850, 9900, 9950, 10000. ALL DIMENSIONS IN INCHES UNLESS OTHERWISE SPECIFIED.

NOTES: REFER TO THE U.S. CONSTRUCTION WARNING.