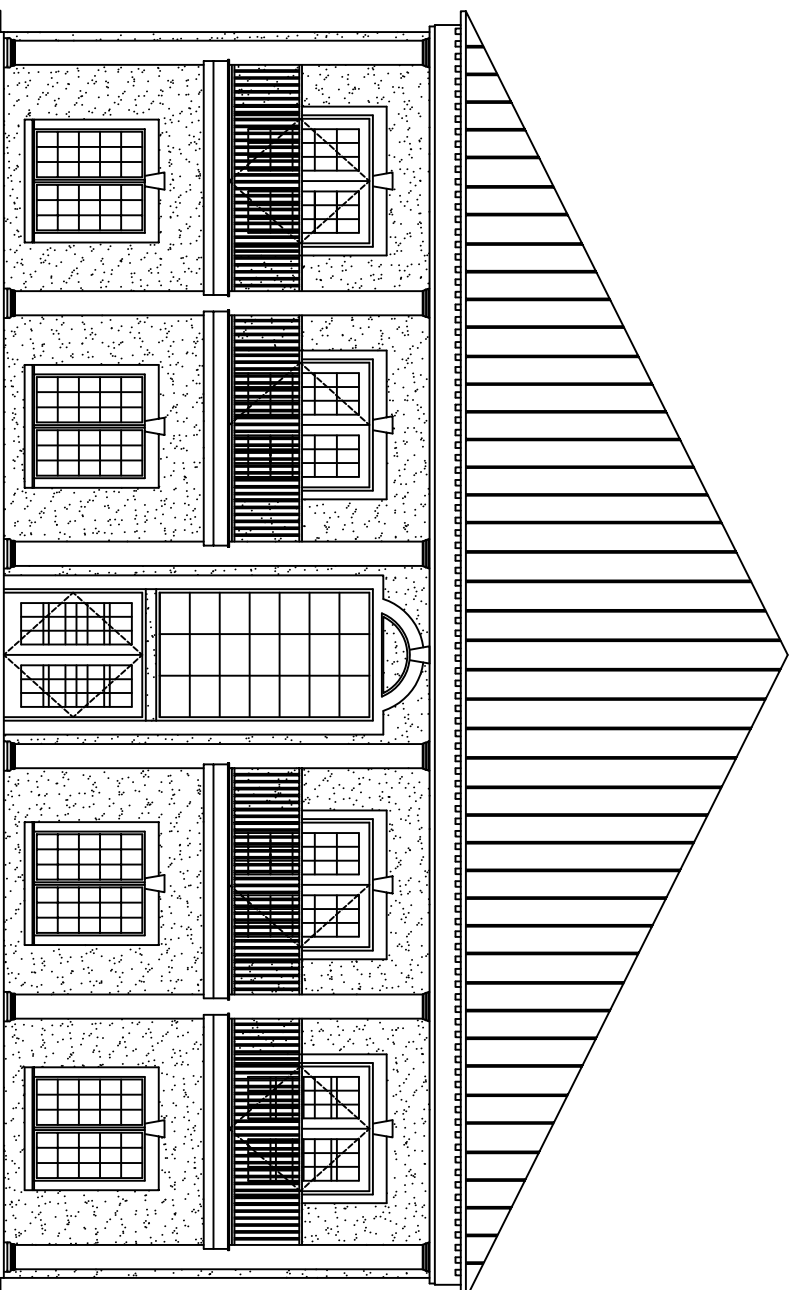


OFFICE / WAREHOUSE : PYTHON CONSTRUCTION

DWG.#	DRAWING NAME
INDEX OF DRAWINGS	
C-1	SITE PLAN
C-2	DRAINAGE PLAN
S-1	FOUNDATION PLAN
S-2	FRAMING / FOUND. PAD PLAN
A-1	OVERALL FIRST FLOOR PLAN/ ENLARGED OFFICE FIRST FLR.
A-2	ENLARGED OFFICE SEC. FLR.
A-3	EXTERIOR ELEVATIONS
A-4	EXTERIOR ELEVATIONS
A-5	EQUIP. STORAGE BLDG. PLANS
A-6	REFLECTIVE CEILING PLAN
A-7	REFLECTIVE CEILING PLAN
H-1	TYP. HANDICAP DETAILS
H-2	TYP. HANDICAP DETAILS
E-1	FIRST FLOOR ELECT. PLANS
E-2	SEC. FLOOR ELECTRICAL PLAN
E-3	PANEL SCHEDULES
M-1	FIRST FLOOR MECH. PLANS
M-2	SEC. FLOOR MECH. PLAN
P-1	FIRST FLOOR PLUMB. PLANS
P-2	SEC. FLOOR PLUMB. PLAN

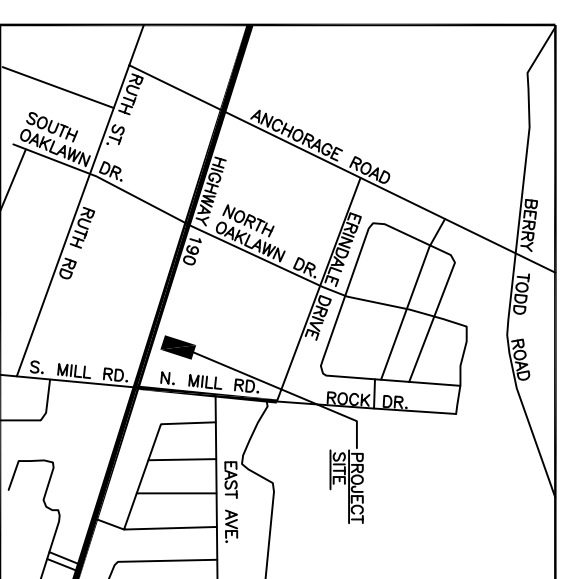


PORTION OF TRACT 361 OF NORTH OAKLAWN

SQUARE FOOTAGE:

OFFICE	2626 SQ.FT.
FIRST FLOOR -	2626 SQ.FT.
SECOND FLOOR -	2626 SQ.FT.
TOTAL OFFICE	5252 SQ.FT.
WAREHOUSE	5763 SQ.FT.
TOTAL	11015 SQ.FT.
EQUIPMENT STORAGE BUILDING	1250 SQ.FT.
TOTAL	

INTERNATIONAL BUILDING CODE
OCCUPANCY: B--NONSEPARATED USE
CONSTRUCTION TYPE V B
(TABLE 503) ALLOWABLE 9,000 SQ. FT. TWO STORIES
(TABLE 601) FIRE RESISTANCE RATING:
STRUCTURAL FRAME--0 HRS.
BEARING WALLS (INTERIOR & EXTERIOR)--0 HRS.
FLOOR CONSTRUCTION--0 HRS.
ROOF CONSTRUCTION--0 HRS.
(TABLE 602) FIRE RESISTANCE RATING FOR EXTERIOR WALLS--
0 HRS--ALL EXTERIOR WALLS
(TABLE 704.8) MAX AREA OF WALL OPENINGS
UNLIMITED UNPROTECTED OPENINGS
ALLOWED THROUGHOUT.
(IBC 1603.1.4) THIS BUILDING SHALL BE DESIGNED IN ACCORDANCE
WITH IBC SECTION 1609 AS A PARTIALLY ENCLOSED
BUILDING USING THE FOLLOWING INFORMATION:
(IBC FIG. 1609) -- BASIC WIND SPEED (3 SECOND GUSTS)--130 MPH
(TABLE 1604.5) -- CATEGORY I BUILDING, IW=1
(IBC 1609.4) -- EXPOSURE B
-- DETERMINATION OF WIND LOADS SHALL BE IN
ACCORDANCE WITH IBC 1609.6



VICINITY MAP
N.T.S.

DATE: 03-08-05
JOB NO.: 1595
OFFICE / WAREHOUSE
PYTHON CONSTRUCTION
TRACT 361 OF N. OAKLAWN
ST. TAMMANY PARISH, LA

DAMMON ENGINEERING, INC.
1095 FLORIDA AVENUE
SLIDELL, LOUISIANA 70458 (985) 649-5832 (985) 641-5950 FAX
DAMMONENGINEERING.COM