

LANDSCAPE LEGEND

- CLASS 2+ TREE MINIMUM OF 10' TO 12' HIGH REQUIRED EVERY 30' MEASURED AT 2 FT. ABOVE THE GROUND
 - CLASS 2 TREE MINIMUM OF 8' TO 10' HIGH REQUIRED EVERY 30' O.C.
 - SHRUBS ONE PER 10'
 - MULCH (PINE NEEDLES OR BARK) WITH FLOWEBEDS PROVIDED AT PEDESTRIAN WALKWAYS WHERE APPLICABLE
- NOTES:
 1. PROVIDE A MIN. LANDSCAPE AREA OF 5' WIDE ALONG BLDG. FOUNDATIONS, WHERE BLDG. FACES A PARKING LOT, STREET, DRIVEWAY, OR IS VISIBLE FROM A PUBLIC STREET.

LEGAL DESCRIPTION
 TOPOGRAPHIC SURVEY OF 4.0549 ACRE PARCEL OF LAND IN SECTION 36, T8S - R14E NEAR THE CITY OF SLIDELL, ST. TAMMANY PARISH, LOUISIANA

PARKING REQUIREMENTS

4,972 SF BUILDING TOTAL - 1 SPACE PER 500 S.F. BUILDING AREA
 TOTAL PARKING REQUIRED = 25 SPACES (INCLUDES 1 HANDICAP)
 TOTAL PARKING PROVIDED = 25 SPACES (INCLUDES 1 HANDICAP)

SITE LIGHTING

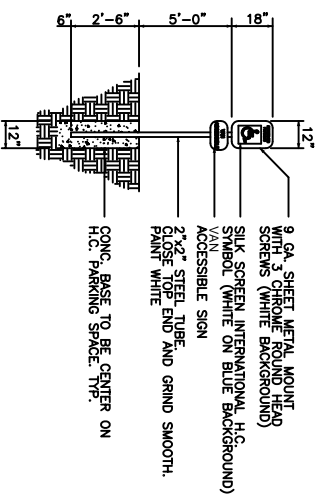
EXTERIOR LIGHTING SHALL BE SHADED OR INWARDLY DIRECTED IN SUCH A MANNER SO THAT NO DIRECT LIGHTING OR GLARE BE CAST BEYOND THE PROPERTY LINE. THE INTENSITY OF SUCH LIGHTING SHALL NOT EXCEED ONE FOOT CANDLE AS MEASURED AT THE ABUTTING PROPERTY LINE. (N/A)

SITE PLAN NOTES

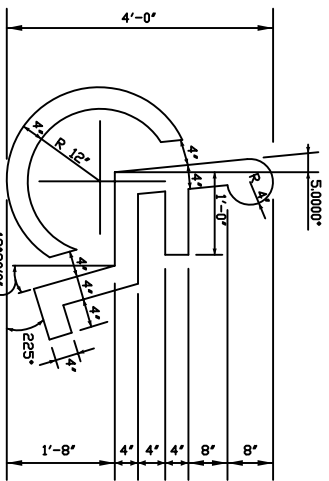
1. ROOFING MATERIAL: COMPOSITION SHINGLES
2. SIDING MATERIAL: BRICK VENEER
3. UTILITIES: ALL UTILITIES SHALL BE PLACED UNDERGROUND

PEDESTRIAN ACCESS REQUIREMENTS
 PEDESTRIAN ACCESS REQUIRED: 400 SQ. FT.
 ACTUAL PEDESTRIAN ACCESS PROVIDED: 522 SQ. FT.

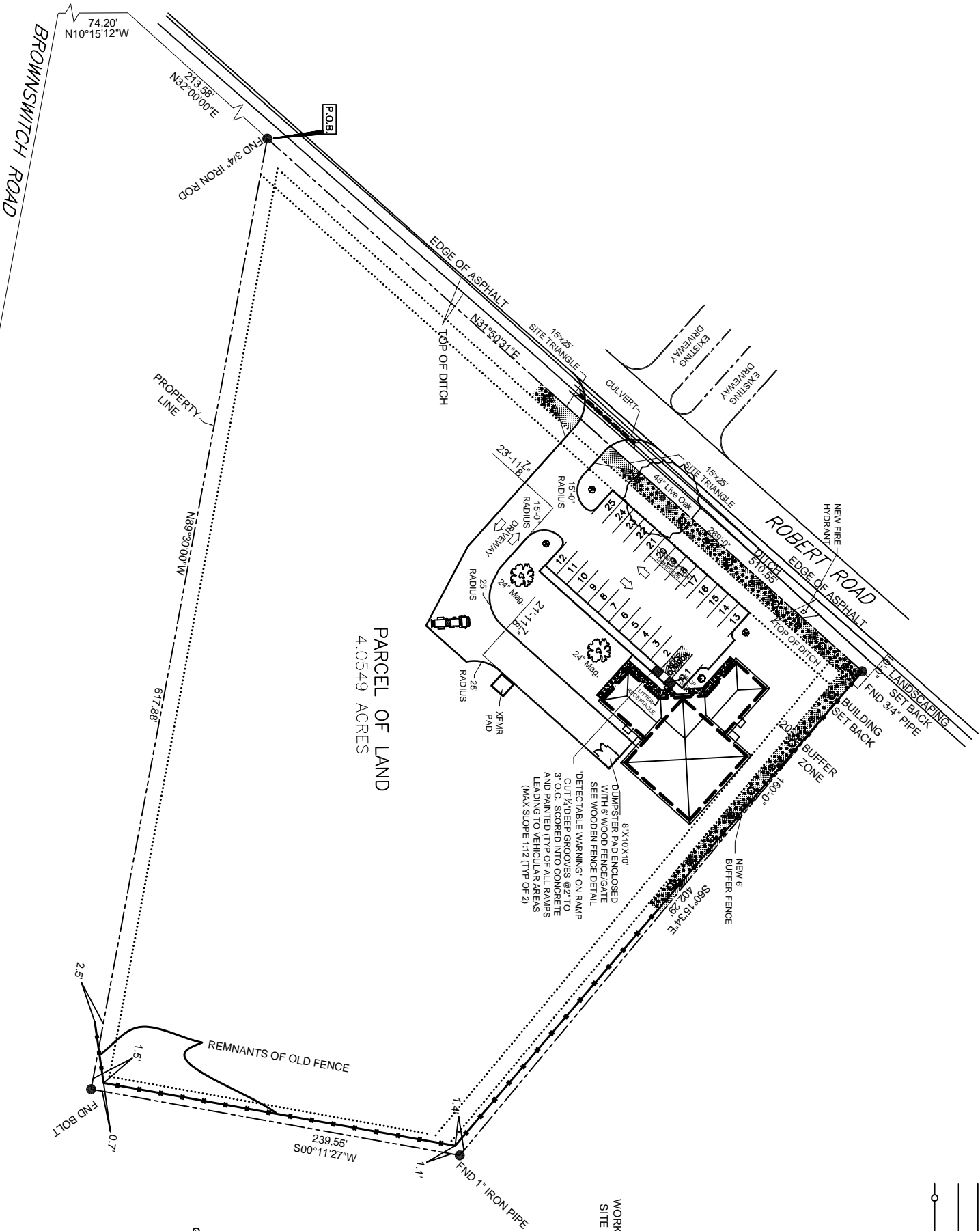
NOTE:
 SIGNAGE SHALL COMPLY WITH SIGNAGE GUIDELINES



HANDICAP PARKING SIGN
 N.T.S.

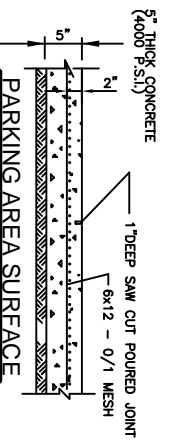


HANDICAP SYMBOL DETAIL
 N.T.S.

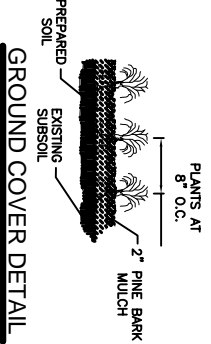


PARCEL OF LAND
 4.0549 ACRES

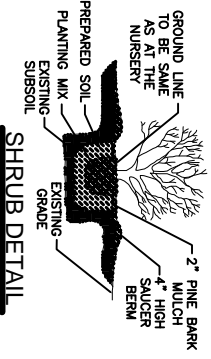
SITE PLAN
 SCALE: 1" = 40'-0"



PARKING AREA SURFACE
 N.T.S.

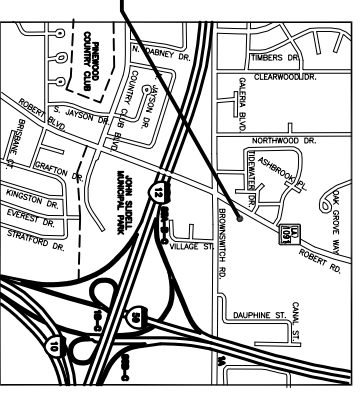


GROUND COVER DETAIL
 N.T.S.

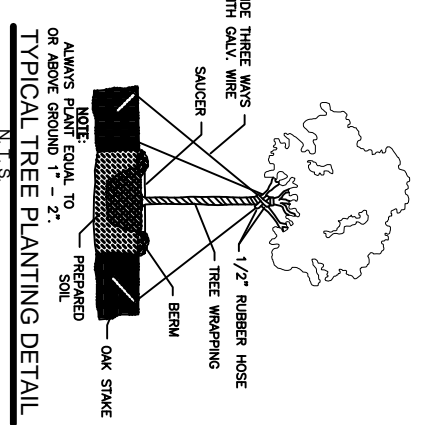


SHRUB DETAIL
 N.T.S.

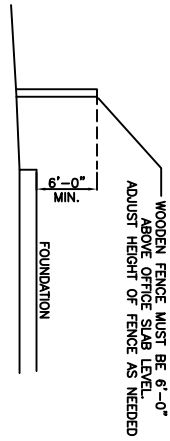
- LEGEND**
- PROPERTY LINE
 - SETBACK LINE
 - NEW BUILDING
 - ROOF LINE
 - NEW CURB
 - NEW 6"-0" WOODEN FENCE
 - HANDICAP PARKING
 - HANDICAP PARKING SIGN
 - CONC. WASTE RECEPTACLE
 - TRAFFIC FLOW DIRECTION
 - FIRE HYDRANT



VICINITY MAP
 N.T.S.



TYPICAL TREE PLANTING DETAIL
 N.T.S.



WOODEN FENCE DETAIL
 N.T.S.



DAMMON ENGINEERING, INC.
 EMMETT DAMMON

ARCHITECT
 ROBERT SOLBERGER

1095 FLORIDA AVENUE
 SLIDELL, LA. 70458
 985-649-5832

WWW.DAMMONENGINEERING.CO
 WEBSITE:
 985-649-5832
 EMAIL:
 DAMMONENG@BELLSOUTH.NET

ARCHITECTURE
 ENGINEERING
 STUDIES
 PLANNING
 INVESTIGATION
 EXPERT WITNESS

NEW OFFICE BUILDING

BRICE JONES
 ROBERT ROAD
 SLIDELL, LA

SITE PLAN

REV: 08-16-07
 SCALE: AS NOTED
 JOB#: 1867
 DATE: 7-18-07
 SHEET

C-2

OF