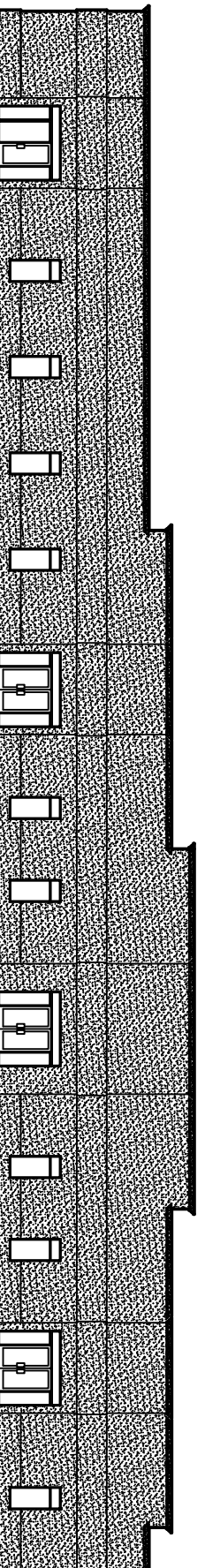


# OFFICE / WAREHOUSE : PLATFORM CRANE



## POWELL DRIVE AND DOSS DRIVE ST. TAMMANY PARISH, LA FULLY SPRINKLED

SQUARE FEET TOTAL  
BUILDING TOTAL: 21,125 SQ. FT.

NOTE:  
CONTRACTOR RESPONSIBLE FOR  
HIRING LICENSED SPRINKLER CONTRACTOR  
TO DESIGNING AND INSTALL A FULLY  
SPRINKLED BUILDING

### INTERNATIONAL BUILDING CODE 2006

OCCUPANCY CLASSIFICATION:  
BUSINESS GROUP B. (SEC. 904.1)  
WAREHOUSE STORAGE (SEC. 311.3)

OCCUPANT LOAD: (TBL. 1004.1.2)  
BUSINESS AREAS = 100 GROSS SQ.FT. / OCCUPANT  
WAREHOUSE AREAS = 500 GROSS SQ. FT. / OCCUPANT

SUITE A  
3035 S.F. OFFICE = 30 OCCUPANTS  
541 S.F. WAREHOUSE = 1 OCCUPANT

SUITE B  
9078 S.F. OFFICE = 97 OCCUPANTS  
1020 S.F. WAREHOUSE 1 = 2 OCCUPANTS  
708 S.F. WAREHOUSE 2 = 1 OCCUPANT

SUITE C  
2385 S.F. OFFICE = 24 OCCUPANTS  
854 S.F. WAREHOUSE = 2 OCCUPANTS

SUITE D  
2126 S.F. OFFICE = 21 OCCUPANTS  
690 S.F. WAREHOUSE = 1 OCCUPANTS

EXIT ACCESS REQUIREMENTS. (SEC. 1016)  
1 EXIT REQUIRED FOR > 49 OCCUPANTS IN BUSINESS OCCUPANCY  
EXIT ACCESS TRAVEL DISTANCE = 300' SPRINKLED

MAXIMUM TRAVEL DISTANCE BY SUITE:

SUITE A = 88'-0"  
SUITE B = 65'-0"  
SUITE C = 78'-0"  
SUITE D = 63'-0"

ALLOWABLE HEIGHT AND BLDG. AREA. (TBL. 503)  
B=23,000 SQ.FT. / 4 STORY ALLOWED. THIS PROJECT 1 STORY / 21,125 PER STORY

CONSTRUCTION CLASSIFICATION: (SEC. 602.5)  
TYPE II B

FIRE RESISTANCE RATING REQUIREMENTS FOR BLDG. ELEMENTS: (TBL. 601)  
STRUCTURAL FRAME= 0 HRS.  
BEARING WALLS (INTERIOR AND EXTERIOR)= 0 HRS.  
NONBEARING WALLS= 0 HRS.  
FLOOR CONSTRUCTION= 0 HRS.  
ROOF CONSTRUCTION= 0 HRS.

FIRE RESISTANCE RATING REQUIREMENTS FOR EXTERIOR WALLS. (TBL. 602)  
EXTERIOR WALLS WITH >10' < 30' FIRE SEPARATION DISTANCE= 0 HRS.

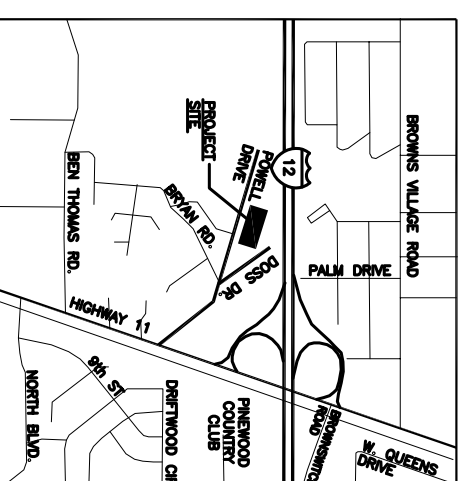
FIRE ALARM SYSTEM REQUIREMENTS. (SEC. 907)  
THIS BLDG. DOES NOT REQUIRE A FIRE ALARM SYSTEM IN ACCORDANCE WITH SEC  
907.2.2

FIRE PROTECTION SYSTEM REQUIREMENTS. (SEC. 903)  
THIS BLDG. DOES NOT REQUIRE A FIRE PROTECTION SYSTEM IN ACCORDANCE WITH SEC  
903.2

CONSTRUCTION DOCUMENTS: (SEC. 1603)  
THIS BLDG. SHALL BE DESIGNED IN ACCORDANCE WITH IBC SECTION 1609 AS A  
PARTIALLY ENCLOSED BLDG. USING THE FOLLOWING INFORMATION:  
BASIC WIND SPEED / 3 SECOND GUSTS= 130 MPH (FIG. 1609)  
IMPORTANCE FACTOR: CATEGORY III BLDG. IE = 1.00. IS = 1.0. IW = 1.00 (TBL. 1604.5)  
EXPOSURE B. DETERMINATION OF WIND LOADS SHALL BE IN ACCORDANCE WITH  
IBC SEC. 1609.4

MINIMUM LIVE LOADS SHALL BE DETERMINED IN ACCORDANCE WITH TBL. 1607.1  
GROUND SNOW LOADS= 5 PSF (FIG. 1608.2)  
BASED ON THE SURVEY OF THIS PROPERTY BY J.V. BURKES & ASSOCIATES, INC.  
THIS PROPERTY IS IN A SPECIAL FLOOD HAZARD AREA.  
F.I.R.M. COMMUNITY MAP NO. 225205 0420 E. DATE 4/21/99  
FLOOD ZONE: A1: BASE FLOOD ELEVATION 16'

ALL WAREHOUSES WILL BE USED FOR STORAGE OF NON COMBUSTIBLE MATERIALS.



VICINITY MAP  
N.M.S.