



DAMMON
ENGINEERING, INC.

EMMETT DAMMON

ARCHITECT
ROBERT WITSE

1095 FLORIDA AVENUE
SLIDELL, LA, 70458
985-649-5832

WWW.DAMMONENGINEERING.COM

EMAIL: DAMMONENG@BELLSOUTH.NET

ARCHITECTURE
ENGINEERING
STUDIES
PLANNING
INVESTIGATION
EXPERT WITNESS

NEW OFFICE
BUILDING

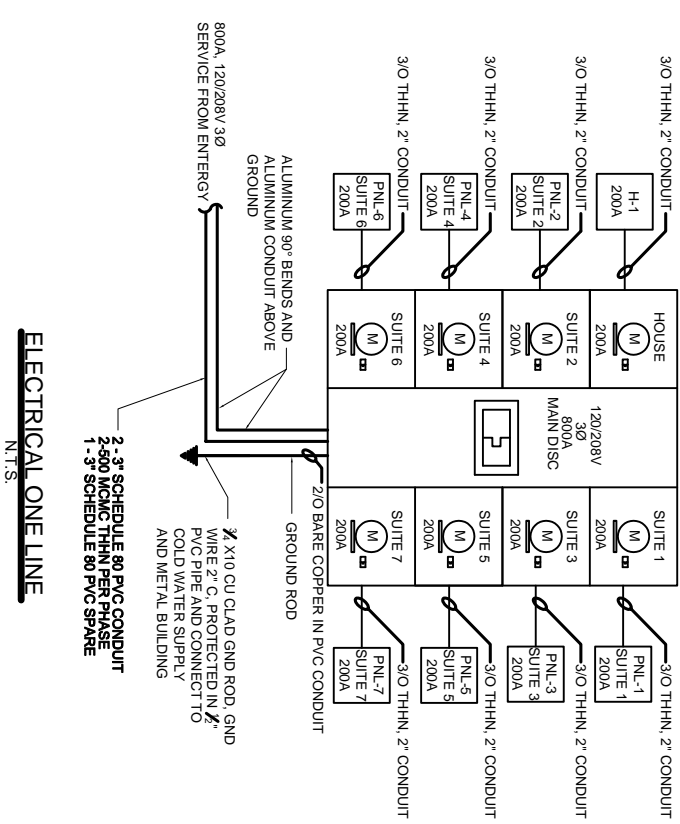
DEREK DRIVE
PROPERTY
1303/1307 DEREK DR.
HAMMOND, LA

ELECTRICAL
SCHEDULE &
ONE LINE

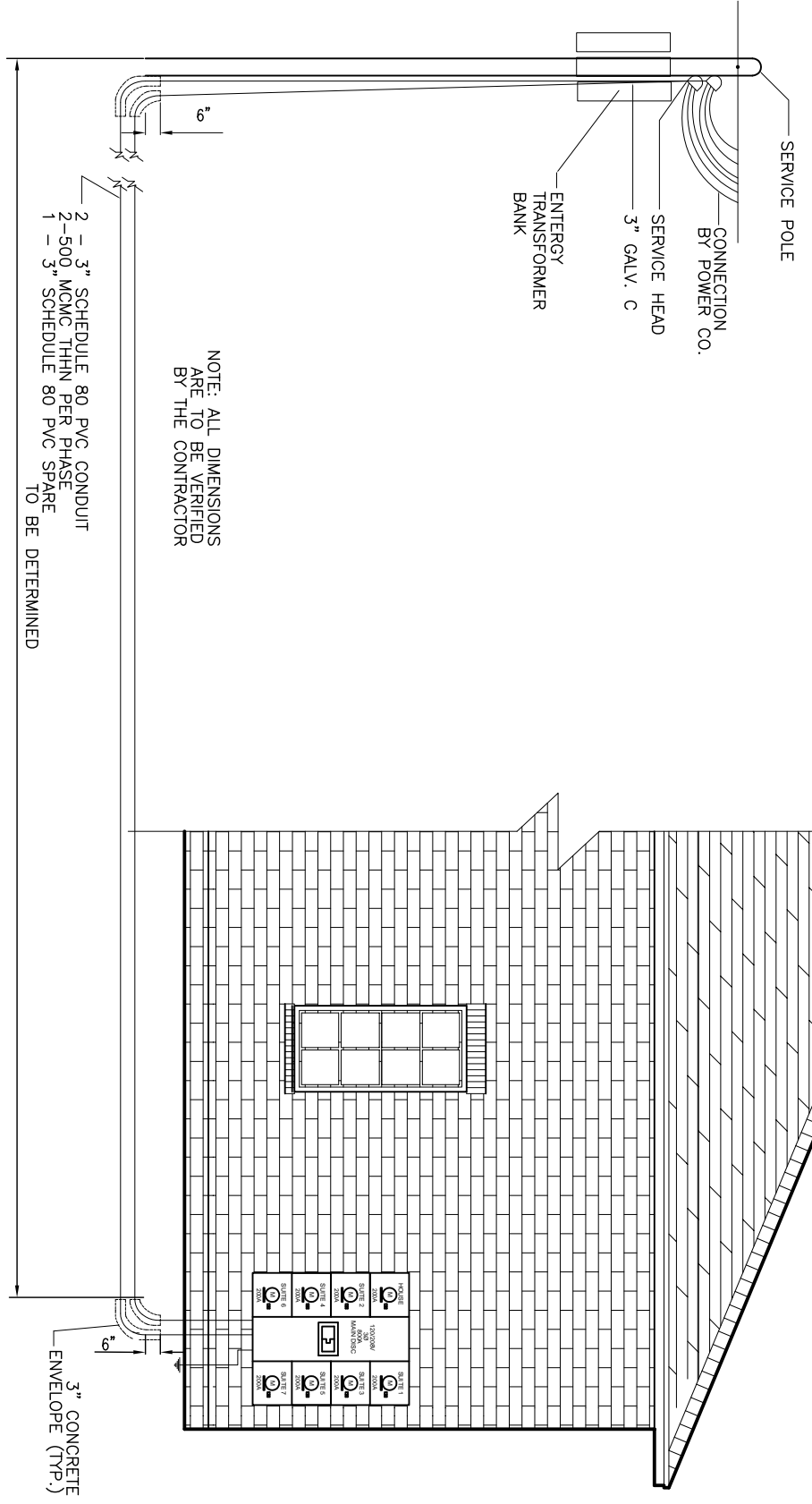
REV:
SCALE: AS NOTED
JOB#: 1908
DATE: 11-15-07
SHEET

E-2
OF

ELECTRICAL LOAD SUMMARY - 800A SERVICE			
LOAD SOURCE	1Ø-KVA	3Ø-KVA	OR 1Ø-KW 3Ø-KW
BUILDING LIGHTING	26.5K		
ELECTRIC WATER HEATING	31.5K		
HEAT PUMP	105K		
SUPPLEMENTAL HEAT SYSTEM	105K		
AIR CONDITIONING	105K		
ELECTRIC HEATING (CIRCLE - PRIMARY/SECONDARY)	7K		
COOKING	10.5K		
REFRIGERATION	10.5K		
RECEPTACLES (STANDARD)	33.1K		
RECEPTACLES (COMPUTER)			
TOTAL MOTORS (EXCLUDE HVAC)			
PARKING LOT / EXTERIOR LIGHTING	5.7K		
MISCELLANEOUS			
OTHER (SPECIFY)			
TOTAL	324.3K		



ELECTRICAL ONE LINE
N.T.S.



NOTE: ALL DIMENSIONS
ARE TO BE VERIFIED
BY THE CONTRACTOR

2 - 3" SCHEDULE 80 PVC CONDUIT
2-500 MCMC THHN PER PHASE
1 - 3" SCHEDULE 80 PVC SPARE
TO BE DETERMINED

PANEL: HOUSE PANEL (H-1)
LOCATION: SOUTHWEST FRONT BUILDING
FEEDER SOURCE: EXTERIOR

VOLTAGE: 208/120V, 125A, 1Ø, 3Ø
ENCLOSURE: SURFACE MOUNTED W/EQUIPMENT GND BAR
SOURCE: D TYPE CO LOAD CENTER

REQ.	LOAD DESCRIPTION	AMF	POLE	LOAD (VA)	POLE	AMF	LOAD DESCRIPTION	REQ.	
1	SUITE ENTRANCE OVER LIGHTS	20	1	1500	1	20	SUITE ENTRANCE OVERHEAD LIGHTS	2	
3	RECEPTACLES (SUITE 1 & 2)	20	1	1100	1	20	RECEPTACLES (SUITE 1 & 2)	4	
5	PHOTOVOLTAIC PANELS (SUITE 1 & 2)	20	1	600	1	20	PHOTOVOLTAIC PANELS (SUITE 1 & 2)	6	
7	PHOTOVOLTAIC PANELS	20	1	800	1	20	PHOTOVOLTAIC PANELS	8	
9		20	1	-	1	20		10	
11		20	1	-	1	20		12	
13		20	1	-	1	20		14	
15		20	1	-	1	20		16	
17		20	1	-	1	20		18	
19		20	1	-	1	20		20	
21		20	1	-	1	20		22	
23		20	1	-	1	20		24	
25		20	1	-	1	20		26	
27		20	1	-	1	20		28	
29		20	1	-	1	20		30	
TOTAL CONNECTED LOAD (VA)				400-4200	TOTAL CONNECTED LOAD (VA)				400-4200
SOLID NEUTRAL WIRE (Ø)					SOLID NEUTRAL WIRE (Ø)				

PANEL: TYPICAL FOR SUITES 1, 2, 3, 4 & 7 (PNL-1,2,3,4,7)
LOCATION: FUTURE TOILET ROOM WALL
FEEDER SOURCE: EXTERIOR

VOLTAGE: 208/120V, 125A, 1Ø, 3Ø
ENCLOSURE: SURFACE MOUNTED W/EQUIPMENT GND BAR
SOURCE: D TYPE CO LOAD CENTER

REQ.	LOAD DESCRIPTION	AMF	POLE	LOAD (VA)	POLE	AMF	LOAD DESCRIPTION	REQ.	
1	A/C (OUTRIG) 5 TONS	60	2	8000	2	60	A/C (OUTRIG) 15 HP	2	
3		20	2	4000	2	20		4	
5	2Ø OIL WATER HEATER	20	2	1000	2	20	SUITE LIGHTING	6	
7		20	2	1000	2	20	SUITE LIGHTING	8	
9	SUITE RECEPT. (SUITE 7 ONLY)	20	1	1000	1	20	SUITE RECEPTACLES	10	
11	RECEPTACLES	20	1	1000	1	20	SUITE RECEPTACLES	12	
13	ALL EXTER / EXTER LIGHT	20	1	200	1	20	RECEPTACLES	14	
15	PNL (PHOTO) BATH REC. & LIGHT	20	1	200	1	20	RECEPTACLES	16	
17		20	1	-	1	20		18	
19		20	1	-	1	20		20	
21		20	1	-	1	20		22	
23		20	1	-	1	20		24	
25		20	1	-	1	20		26	
27		20	1	-	1	20		28	
29		20	1	-	1	20		30	
TOTAL CONNECTED LOAD (VA)				400-15170	TOTAL CONNECTED LOAD (VA)				400-15170
SOLID NEUTRAL WIRE (Ø)					SOLID NEUTRAL WIRE (Ø)				

PANEL: TYPICAL FOR SUITES 5 & 6 (PNL-5 & PNL-6)
LOCATION: TOILET ROOM WALL
FEEDER SOURCE: EXTERIOR

VOLTAGE: 208/120V, 125A, 1Ø, 3Ø
ENCLOSURE: SURFACE MOUNTED W/EQUIPMENT GND BAR
SOURCE: D TYPE CO LOAD CENTER

REQ.	LOAD DESCRIPTION	AMF	POLE	LOAD (VA)	POLE	AMF	LOAD DESCRIPTION	REQ.	
1	A/C (OUTRIG) 5 TONS	60	2	8000	2	60	A/C (OUTRIG) 15 HP	2	
3		20	2	4000	2	20		4	
5	2Ø OIL WATER HEATER	20	2	1000	2	20	SUITE LIGHTING	6	
7		20	2	1000	2	20	SUITE LIGHTING	8	
9	PNL	20	1	1000	1	20	RECEPTACLES	10	
11	RECEPTACLES	20	1	1000	1	20	RECEPTACLES	12	
13	PNL (PHOTO) BATH REC. & LIGHT	20	1	200	1	20	RECEPTACLES	14	
15		20	1	-	1	20		16	
17		20	1	-	1	20		18	
19		20	1	-	1	20		20	
21		20	1	-	1	20		22	
23		20	1	-	1	20		24	
25		20	1	-	1	20		26	
27		20	1	-	1	20		28	
29		20	1	-	1	20		30	
TOTAL CONNECTED LOAD (VA)				400-15180	TOTAL CONNECTED LOAD (VA)				400-15180
SOLID NEUTRAL WIRE (Ø)					SOLID NEUTRAL WIRE (Ø)				

ELECTRICAL SERVICE DETAIL (SOUTH ELEVATION)
N.T.S.