



**DAMMON**  
ENGINEERING, INC.

**EMMETT**  
**DAMMON**

**ARCHITECT**  
**ROBERT**  
**WILTSE**

1095 FLORIDA AVENUE  
SLIDELL, LA. 70458  
985-649-5832

WEBSITE:  
WWW.DAMMONENGINEERING.COM  
EMAIL:  
DAMMONENG@BELLSOUTH.NET

ARCHITECTURE  
ENGINEERING  
STUDIES  
PLANNING  
INVESTIGATION  
EXPERT WITNESS

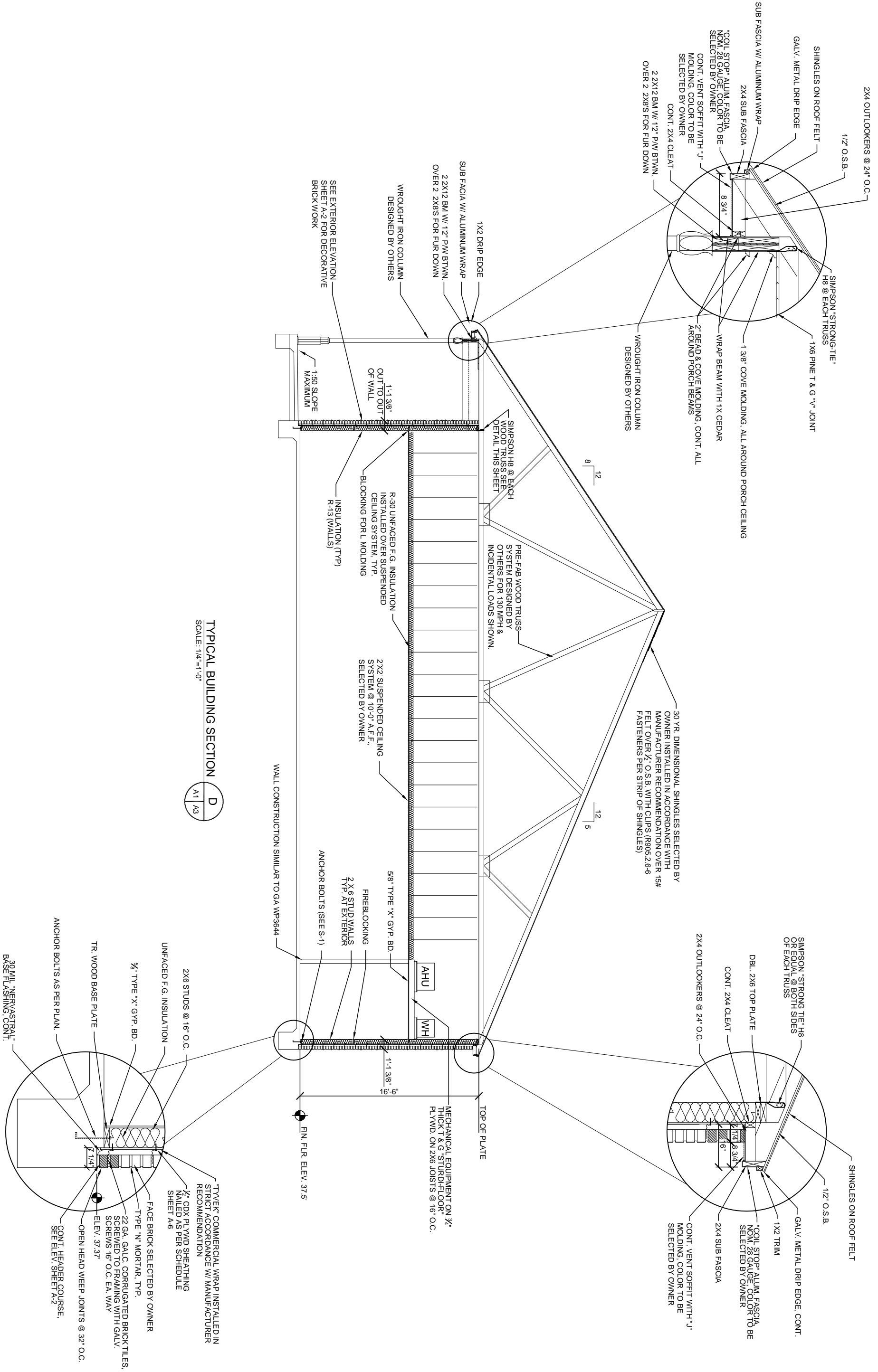
**NEW OFFICE**  
**BUILDING**

DEREK DRIVE  
PROPERTY  
1303/1307 DEREK DR  
HAMMOND, LA

**BUILDING**  
**SECTION**

REV:  
SCALE: AS NOTED  
JOB#: 1908  
DATE: 11-15-07  
SHEET

**A-3**  
OF



**TYPICAL BUILDING SECTION**  
SCALE: 1/4" = 1'-0"  
D  
A1 A3