



DAMMON
ENGINEERING, INC.
EMMETT
DAMMON

ARCHITECT
ROBERT
WILTSE

1095 FLORIDA AVENUE
SLIDELL, LA. 70458
985-649-5832

WEBSITE:
WWW.DAMMONENGINEERING.COM

EMAIL:
DAMMONENG@BELLSOUTH.NET

ARCHITECTURE
ENGINEERING
STUDIES
PLANNING
INVESTIGATION
EXPERT WITNESS

NEW OFFICE
BUILDING

DEREK DRIVE
PROPERTY
1303/1307 DEREK DR
HAMMOND, LA

REFLECTED
CEILING PLAN

REV:

SCALE: AS NOTED

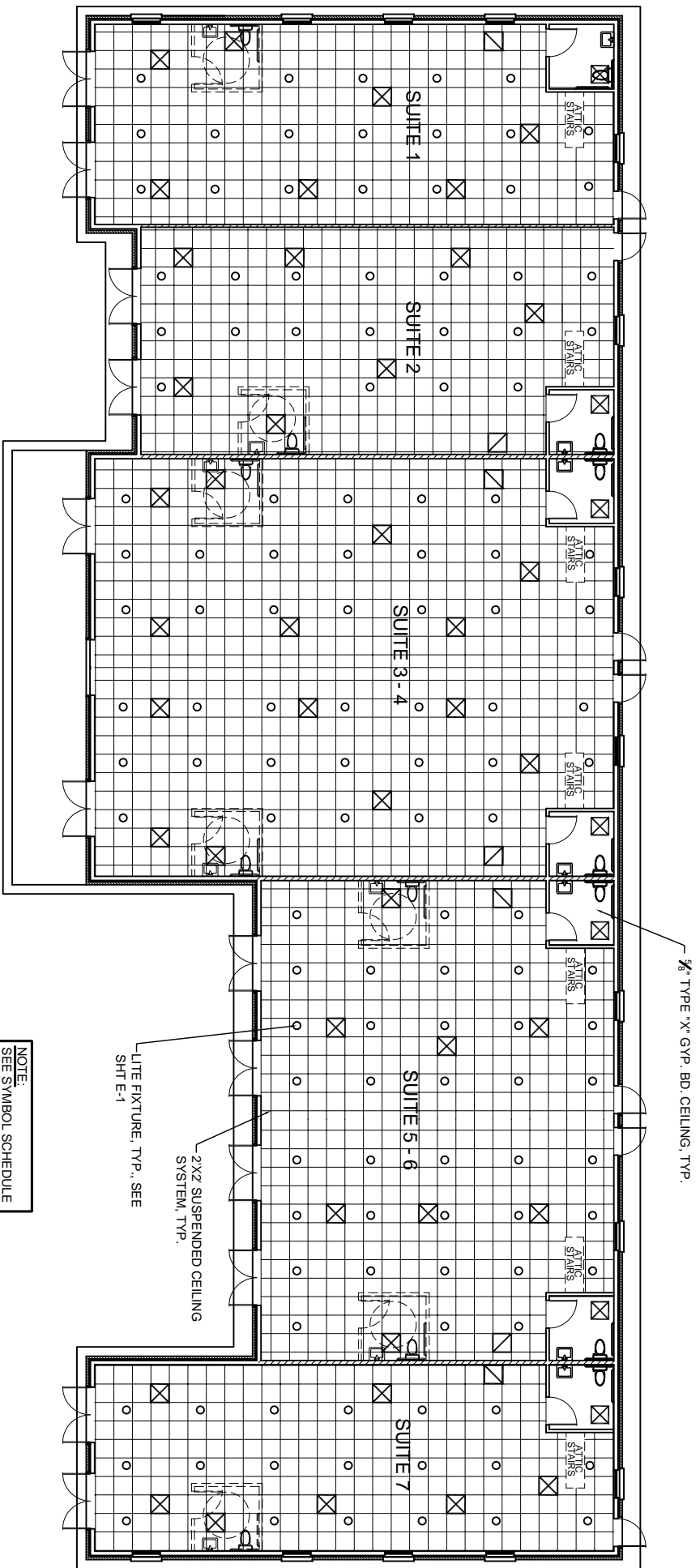
JOB#: 1908

DATE: 11-15-07

SHEET

A-5

OF



NOTE:
SEE SYMBOL SCHEDULE
SHEET M-1

REFLECTED CEILING PLAN
SCALE: 1/8"=1'-0"

