



801 HOWARD St.  
New Orleans, LA  
70113  
T: 504-342-4925  
F: 504-342-4243

These drawings were prepared by me, or under my close personal supervision, and to my best knowledge and belief comply with all City codes and ordinances. I am not administering the work.

# NMD Office Building

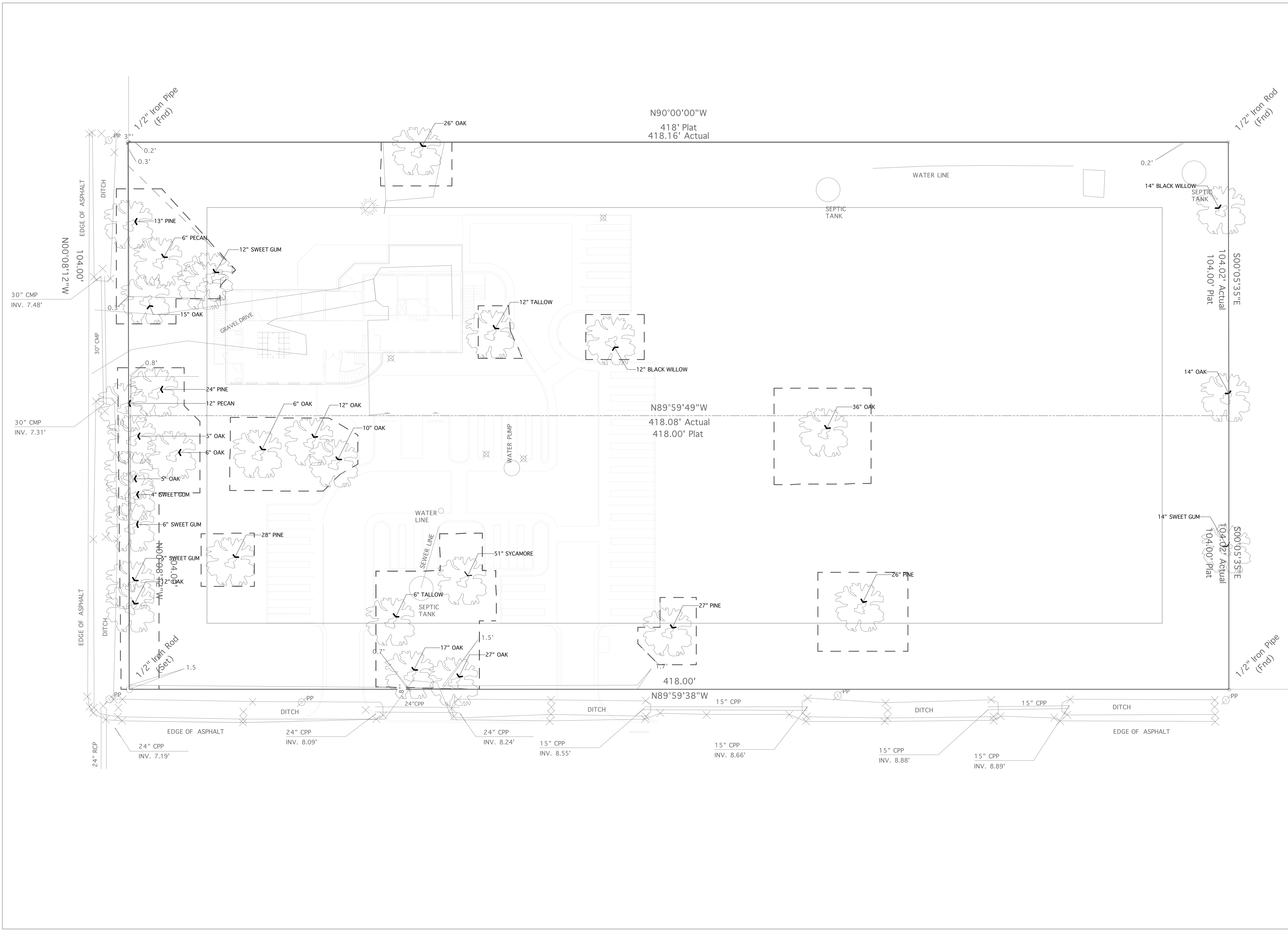
CORAL AVE.  
ST. TAMMANY, LOUISIANA

DATE ISSUED:	05.12.08	
REV	DATE	DESCRIPTION
	11.07.08	PERMIT SET

PROJECT NUMBER  
FILE NAME  
DRAWN BY  
CHECKED BY

COPYRIGHT © 2008 PROPERTY OF FUTUREPROOF, LLC AND MAY NOT BE USED WITHOUT PERMISSION. ALL RIGHTS RESERVED.VX

## TREE FENCING PLAN L-1



N90°00'00"W  
418' Plat  
418.16' Actual

N89°59'49"W  
418.08' Actual  
418.00' Plat

N89°59'38"W  
418.00'

S00°05'35"E  
104.02' Actual  
104.00' Plat

S00°05'35"E  
104.02' Actual  
104.00' Plat

N00°08'12"W  
104.00'

N00°08'12"W  
104.00'

1/2" Iron Pipe (Fnd)

1/2" Iron Rod (Fnd)

1/2" Iron Pipe (Fnd)

1/2" Iron Rod (Set)

30" CMP  
INV. 7.48'

30" CMP  
INV. 7.31'

30" CMP

30" CMP

24" RCP

24" CPP  
INV. 7.19'

24" CPP  
INV. 8.09'

24" CPP  
INV. 8.24'

15" CPP  
INV. 8.55'

15" CPP  
INV. 8.66'

15" CPP  
INV. 8.88'

15" CPP  
INV. 8.89'

24" RCP

24" CPP

24" CPP

15" CPP

15" CPP

15" CPP

15" CPP

DITCH

DITCH

DITCH

DITCH

DITCH

DITCH

DITCH

EDGE OF ASPHALT

EDGE OF ASPHALT

EDGE OF ASPHALT

EDGE OF ASPHALT

EDGE OF ASPHALT

EDGE OF ASPHALT

EDGE OF ASPHALT

PP

PP

PP

PP

PP

PP

PP

SEWER LINE

SEWER LINE

SEWER LINE

SEWER LINE

SEWER LINE

SEWER LINE

SEWER LINE

WATER LINE

WATER LINE

WATER LINE

WATER LINE

WATER LINE

WATER LINE

WATER LINE

GRAVEL DRIVE

GRAVEL DRIVE

GRAVEL DRIVE

GRAVEL DRIVE

GRAVEL DRIVE

GRAVEL DRIVE

GRAVEL DRIVE

SEPTIC TANK

SEPTIC TANK

SEPTIC TANK

SEPTIC TANK

SEPTIC TANK

SEPTIC TANK

SEPTIC TANK

WATER PUMP

WATER PUMP

WATER PUMP

WATER PUMP

WATER PUMP

WATER PUMP

WATER PUMP

13" PINE

6" PECAN

12" SWEET GUM

15" OAK

24" PINE

12" PECAN

6" OAK

12" OAK

5" OAK

6" OAK

5" OAK

4" SWEET GUM

6" SWEET GUM

5" SWEET GUM

12" OAK

28" PINE

6" TALLOW

51" SYCAMORE

17" OAK

27" OAK

27" PINE

36" OAK

26" PINE

14" OAK

14" SWEET GUM

14" BLACK WILLOW

12" TALLOW

12" BLACK WILLOW

26" OAK

0.2'

0.3'

0.3'

0.8'

1.5'

0.7'

1.5'

1.7'

0.2'

0.2'

0.2'

0.2'

0.2'

0.2'

0.2'

0.2'

0.2'

0.2'

0.2'

0.2'

0.2'

0.2'

0.2'

0.2'

0.2'

0.2'

0.2'

0.2'

0.2'

PR 3"

PR 3"

PR 3"

PR 3"

PR 3"

PR 3"

PR 3"

PR 3"

PR 3"

PR 3"

PR 3"

PR 3"

PR 3"

PR 3"

PR 3"

PR 3"

PR 3"

PR 3"

PR 3"

PR 3"

PR 3"

PR 3"

PR 3"

PR 3"

PR 3"

PR 3"

PR 3"

PR 3"

PR 3"