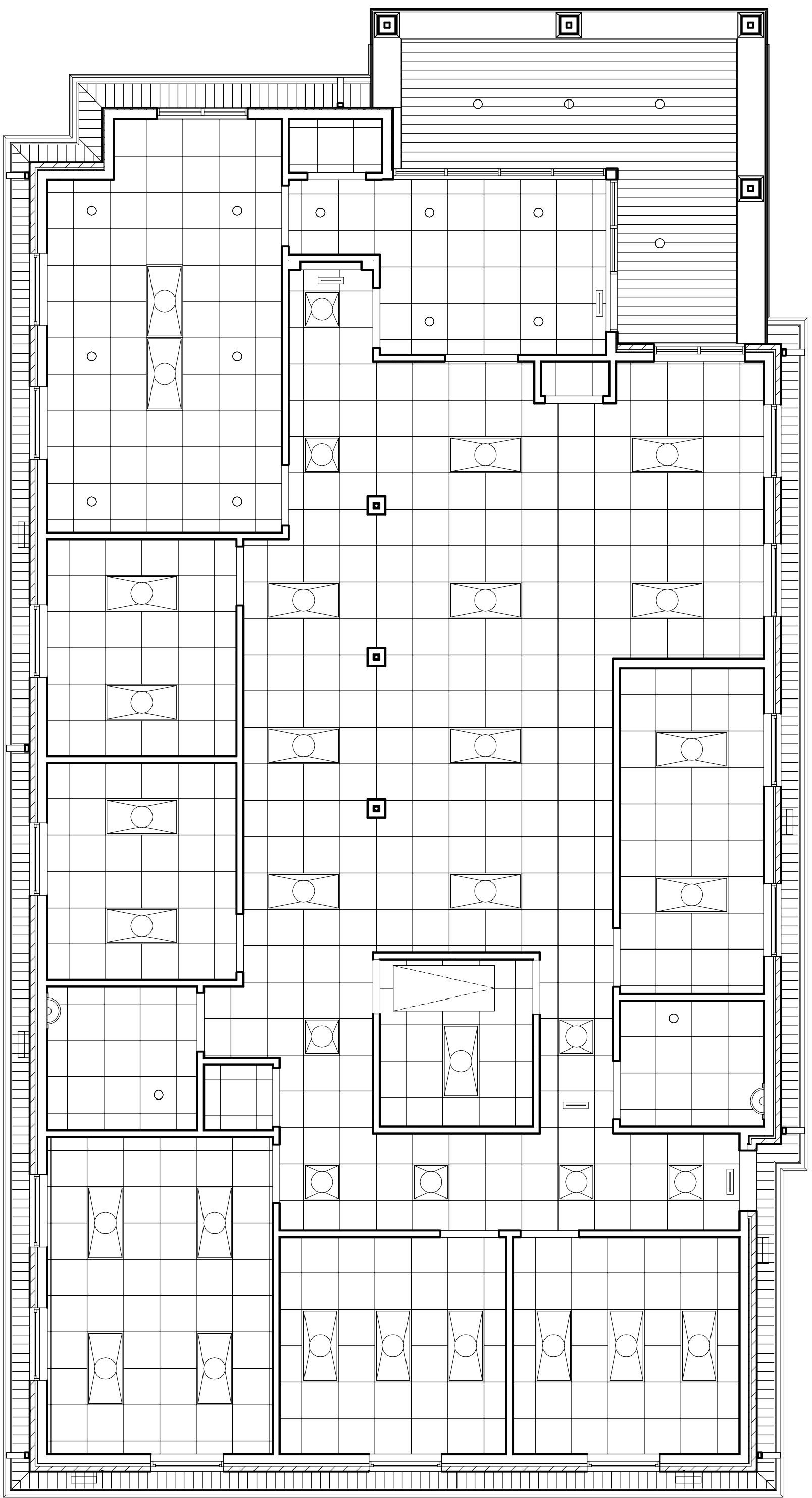


1 MECHANICAL PLAN
SCALE 3/16" = 1'-0"



GENERAL HVAC NOTES

1. CONCEALED DUCTWORK TO BE GALVANNEED SHEET METAL INSULATED WITH FIBERGLASS DUCTWORK INSULATION. EXPOSED DUCTWORK SHALL BE INSTALLED PER SMACNA STANDARDS. DUCTWORK IMMEDIATELY DOWNSTREAM FROM RTU SHALL BE LINED FOR SOUND ATTENUATION. EXPOSED DUCTWORK TO BE GALVANIZED SHEET METAL LINED WITH FIBROGLASS GLASS DUCT LINER MIN R-6. INSTALLED PER SMACNA STANDARDS.
2. ROUND FLEXIBLE DUCT TO BE UL-181 CLASS 1 AIR DUCT MATERIALS.
3. DUCT SIZES SHOWN ARE CLEAR INSIDE DIMENSIONS.
4. ALL SYSTEMS OVER 2000 CFM AND LESS THAN 15,000 CFM, SMOKE DETECTORS SHALL BE INSTALLED IN ACCORDANCE WITH NFPA 72E IN THE RETURN DUCT DOWNSTREAM OF THE AIR HANDLING UNIT AND ALL FILTERS TO AUTOMATICALLY STOP THE FAN.
5. PROVIDE UL LISTED 125°F FIRE-RATED RETURN AIR OF EACH SYSTEM UNDER 2000 CFM TO SHUT DOWN THE FAN IN THE EVENT OF FIRE. PENETRATIONS OF FIRE-RATED ASSEMBLIES AND WERE REQUIRED BY CODE, INCLUDING OUTSIDE AIR INTAKES AND EXHAUST FANS.
6. CONDENSATE DRAINS TO BE PVC PIPE RUN TO PLUMBERS P-TRAP WITHIN FIVE FEET OF AIR HANDLING UNITS.
7. ALL AIR HANDLING SYSTEMS TO BE BALANCED TO ASSURE PROPER AIR FLOW PER PLANS.
8. ALL THERMOSTATS TO BE AUTOMATIC CHANGEOVER WITH HEAT SWITCH.
9. EXHAUST FAN SHALL BE CONTROLLED BY A SWITCH ON THE WALL IN THE SAME LOCATION AS LIGHT SWITCHES. PROVIDE BACK DRAFT DAMPER.
10. PROVIDE AND INSTALL WATER PROOF GRILLE VENT IN PROPER ROOF LOCATION FOR PLUMBING FIXTURE EXHAUST.
11. ALL SUPPLY AIR VENTS SHALL BE EQUIPPED WITH AIR VOLUME CONTROL DAMPERS AT THE REGISTER.
12. LOCATE OUTDOOR UNITS AS SHOWN ON ARCHITECTURAL DRAWINGS.
13. REFRIGERANT LINES SHALL BE SIZED BY UNIT MANUFACTURER AND INSTALLED ACCORDING TO MANUFACTURER'S INSTRUCTIONS.
14. FRESH AIR SHALL BE SUPPLIED TO EACH AIR HANDLER THROUGH EXTERIOR WALL DUCT SUPPLIED WITH A CONTROL DAMPER.
15. ALL ELECTRICAL, MECHANICAL, AND PLUMBING PENETRATING FIRE WALLS SHALL BE FIRE CALKED, PENETRATIONS THROUGH RATED CONSTRUCTION SHALL BE SEALED WITH A MATERIAL CAPABLE OF PREVENTING THE PASSAGE OF FLAMES AND HOT GASES WHEN TESTED IN ACCORDANCE WITH ASTM E-814.
16. ALL MECHANICAL SYMBOLS ARE DRAWN DYNAMICALLY.
17. ALL REGISTER VENTS WITH OWNER LOCATIONS OF VENTS, DAMPERS, REGISTERS, ETC.
18. FLEXIBLE DUCTWORK LENGTH NOT TO EXCEED 12'-0".
19. REGISTER TO BE SELECTED BASED ON AIR FLOW GRILLE AND DIFFUSER.
20. RETURN TO THE UNIT OR COMPONENTS AS REQUIRED.
21. FINAL LOCATION OF RETURN AIR CONTROLS TO BE COORDINATED WITH OWNER AND OES SITE.
22. PROVIDE AND INSTALL SMOKE DETECTORS AS APPROVED BY LOCAL AHS. PLACE NEAR S/A AND S/A OPENINGS OF WALL AND PROVIDE WITH ACCESS PANEL, WIRING BY ELECTRICAL CONTRACTOR.
23. FRESH AIR INTAKES ARE REQUIRED TO HAVE VORTORIZED OR GRAVITY DAMPERS TO SHUT OFF WHEN SYSTEM IS NOT RUNNING.
24. PROVIDE BIRD SCREENS AT ALL EXTERIOR MECHANICAL PENETRATIONS.
25. COORDINATE WALL MOUNTED THERMOSTAT LOCATIONS WITH ALL OWNER PARTITIONS. REFER TO ARCHITECTURAL DRAWINGS.
26. SEE ROOF PLAN FOR ALL ROOF PENETRATIONS.

SHEET TITLE: NEW OFFICE BUILDING
MCMATH CONSTRUCTION

LOT 2C PHILLIPS BUSINESS PARK
2052 GAUSE BLVD. EAST, SLIDELL LA 70461

JOB No: 2416 DATE: 4/17/2020
DRAWN BY: JAGMVA CHECKED BY: CKD

The above drawings and specifications, designs and arrangements represent the property and are the sole responsibility of Dammon Engineering, Inc. and shall remain the property of Dammon Engineering, Inc. and shall not be used in connection with any work or project other than the specific project for which they have been prepared and developed without written consent of Dammon Engineering, Inc. Please contact with those drawings or specifications shall constitute a contract. All work shall be done in accordance with the applicable codes and standards.

REVISIONS		DATE
#	DESCRIPTION	

DAMMON ENGINEERING, INC.
LOUISIANA & MISSISSIPPI

Chief Engineer: Brian Mstich, PE
554 Old Spanish Trail
Slidell, LA 70458

www.dammonengineering.com
info@dammonengineering.com
PH: 985.649.5832

M101
SHEET NO. 1 OF 2