

PLANT MATERIAL LIST

KEY #	BOTANICAL NAME	COMMON NAME	SPEC	
CS	7	CORTADERIA SELLOANA	PAMPAS GRASS	5 GALLON
FP	6	FRAXINUS PENNSYLVAN.	GREEN ASH	2-1/2" CAL
IO	7	ILEX O. 'SAVANNAH'	SAVANNAH HOLLY	2" CAL
LI-L	12	LAGERSTROEMIA INDICA	PINK CREPE MYRTLE	10-12" MULTI
LI-R	13	LAGERSTROEMIA INDICA	WHITE CREPE MYRTLE	10-12" MULTI
LM	230	LIRIOPE MUSCARI	EVERGRN. GIANT LIRIOPE	1 GAL, 12" OC
MC	11	MYRICA CERIFERA	WAX MYRTLE	10-12" MULTI
PB	6	PYRUS C. 'BRADFORD'	BRADFORD PEAR	10-12"
QP	5	QUERCUS PHELLOS	WILLOW OAK	2-1/2" CAL
QV	6	QUERCUS VIRGINIANA	LIVE OAK	3" CAL
RI	59	RAPHIOLEPIS INDICA	INDIAN HAWTHORN	3" x 3" FULL
TD	5	TAXODIUM DISTICHUM	BALD CYPRESS	3" CALIPER
SOD		CYNODON DACTYLON	BERMUDA GRASS	

MAINTENANCE NOTE:

BLOCKBUSTER VIDEO STORES SHALL ASSUME RESPONSIBILITY FOR CONTINUING MAINTENANCE OF ALL PLANT MATERIALS, TO INCLUDE WATERING, MOWING, FERTILIZING, PRUNING, WEEDING, TREATMENT OF DISEASED PLANTS, AND REPLACEMENT OF DAMAGED OR DEAD PLANT MATERIALS.

T. BYRON SMITH ARCHITECTS LTD.
 NEW ORLEANS, LOUISIANA 70175
 PH. (504) 899-9188

THE DRAWING AND SPECIFICATIONS PREPARED BY THE ARCHITECT FOR THE ARCHITECT'S SERVICE FOR THE PROJECT AND ALL WORK THEREON SHALL BE THE ARCHITECT'S RESPONSIBILITY. THE ARCHITECT SHALL NOT BE RESPONSIBLE FOR THE DESIGN, CONSTRUCTION, OR MAINTENANCE OF ANY OTHER WORK NOT SHOWN ON THIS DRAWING AND NOT APPROVED BY THE ARCHITECT.

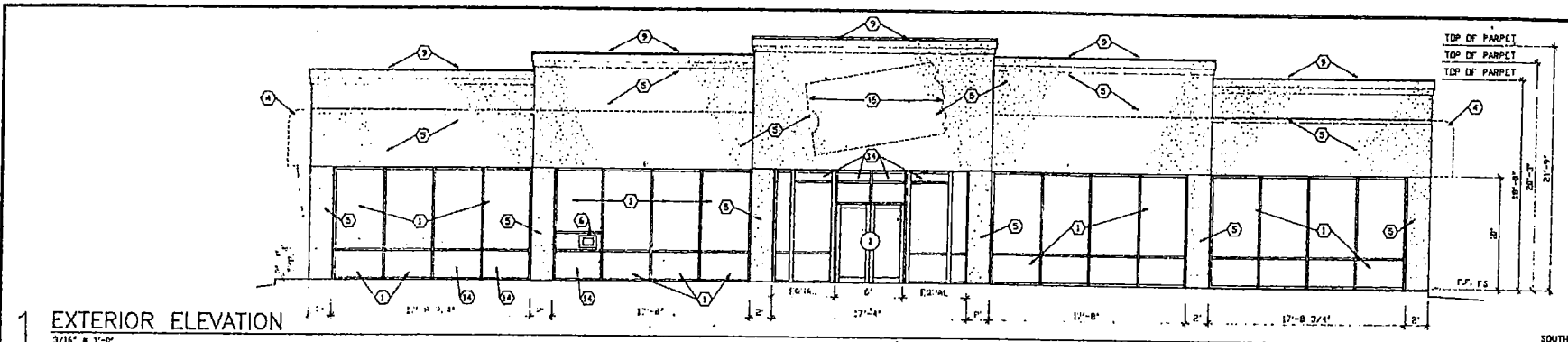
PROPOSED BLOCKBUSTER VIDEO
 on
 MILITARY ROAD
 SLIDELL, LOUISIANA

REVISION NO.	DATE	BY	DESCRIPTION
1			
2			
3			
4			
5			

JOB NO. 0010-96-TB
 DATE 07-03-96
 DRAWN BY VJ
 COMPUTER FILE VSR-HL-NOL-L-DLVG

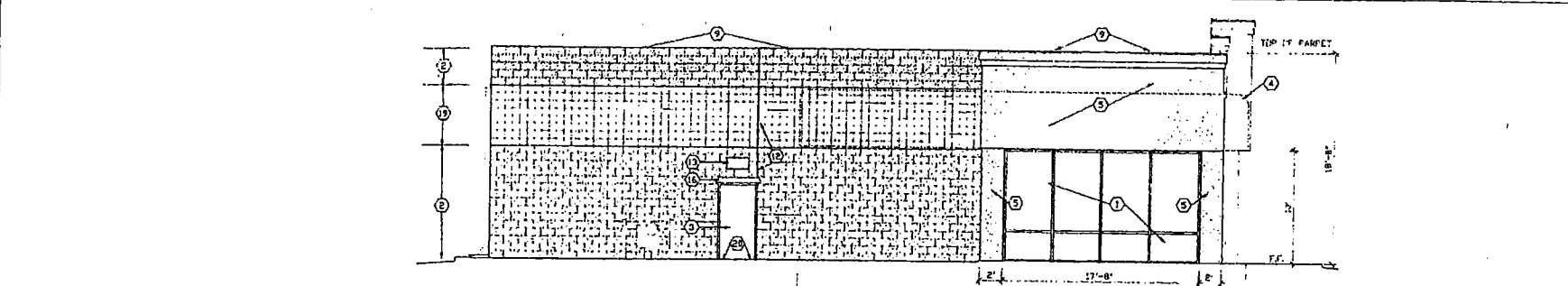
LARSON / RODRIGUEZ, LIMITED
 PLANNING AND LANDSCAPE ARCHITECTURE
 P. O. BOX 3337 NEW ORLEANS, LOUISIANA, USA 70117 (504) 525-7066

JULY 1996



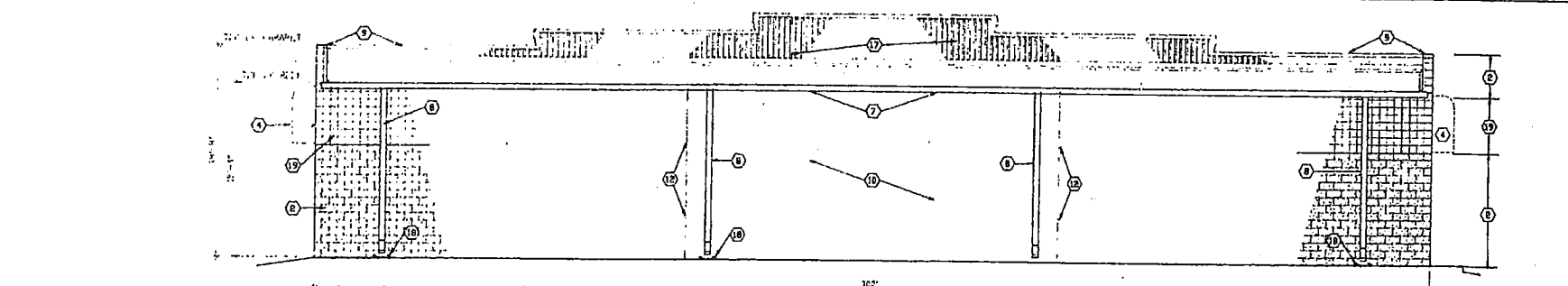
1 EXTERIOR ELEVATION
3/16" = 1'-0"

SOUTH
XIV



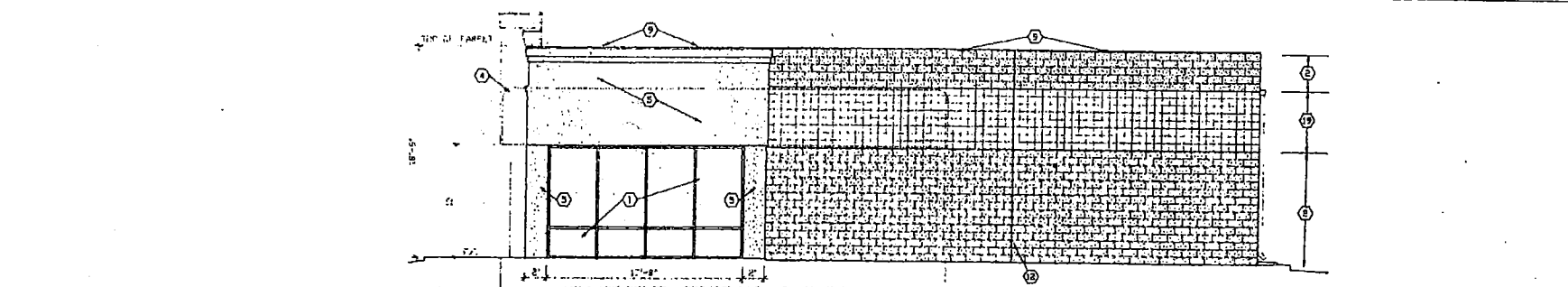
2 EXTERIOR ELEVATION
3/16" = 1'-0"

WEST
XV



3 EXTERIOR ELEVATION
3/16" = 1'-0"

NORTH
XVI



4 EXTERIOR ELEVATION
3/16" = 1'-0"

EAST
XVII

EXTERIOR ELEVATION
DRAWING KEYNOTES

- ① 7 MIL ANODIC BRONZE ALUMINUM STRUCKFRONT WITH INSULATED GLASS, REF. SHEET AS TO DETERMINE TEMPERED GLASS LOCATIONS.
- ② 8" SPLIT-FACE CHU BLOCK (PAINTED).
- ③ FACTORY PAINTED METAL DOOR WITH PANIC HARDWARE.
- ④ FUTURE SIGN AVENUE AND FRAME SUPPLIED AND INSTALLED BY TENANT.
- ⑤ SYNTHETIC RESIN SYSTEM (STANDARD WEIGHT), REFERENCE EXTERIOR WALL SECTIONS FOR MORE INFORMATION. SUBMIT LEAD COLOR SAMPLE TO ARCHITECT BEFORE BEGINNING WORK. NOTE EXPOSED GRADE BEAS TO RECEIVE RESIN SYSTEM FINISH. COLOR TO MATCH STUCCO ABOVE. (SEE DETAILS).
- ⑥ NIGHT DROP DEPOSITORY BOX BY KINGSLEY MODEL # KVC-1000 (BOX SUPPLIED AND INSTALLED BY TENANT. GLASS CONTRACTOR TO INSTALL 1/4" PLYWOOD PANEL WITH ALUMINUM ANODIC BRONZE SHEET LAMINATED TO PLYWOOD).
- ⑦ 24 GA. GALV. GALVANIZED GUTTER, PAINTED TO MATCH BLOCK WALL.
- ⑧ 24 GA. GALV. GALVANIZED DOWNSPOUT, PAINTED TO MATCH BLOCK WALL.
- ⑨ GALVANIZED METAL PARPET FLASHING, PAINTED TO MATCH ADJACENT MATERIAL.
- ⑩ STANDARD 8" SMOOTH FACE CHU SEC. SPEC. FOR PAINTING INSTRUCTIONS.
- ⑪ SCORED CONTRACTION JOINTS IN SYNTHETIC RESIN SYSTEM.
- ⑫ EXPANSION JOINT IN CHU WALL, REFERENCE DETAILS ON SHEET A-6.
- ⑬ LIGHT WALL PACK.
- ⑭ BRONZE TINTED SPANDRELITE PANEL WITH 7 MIL ANODIC BRONZE ALUMINUM FRAME.
- ⑮ FUTURE SIGNAGE SUPPLIED & INSTALLED BY TENANT. LANDLORD'S C.C. TO PROVIDE 4"x8"x2" TREATED PLYWOOD & COVER LINE OF EXTENDED PARPET INSTEAD OF 5/8" EXTERIOR WALL BOARD AT THIS LOCATION.
- ⑯ 24 GA. GALV. GALVANIZED GUTTER, PAINT TO MATCH ROOF & FRAME.
- ⑰ 26 GA. CORRUGATED GALVANIZED SHEET METAL SIDING.
- ⑱ PREFAB CONCRETE SPLASH BLOCKS AT EACH DOWNSPOUT.
- ⑲ 8" CHU WITH 8x8 SCORED FACE (PAINTED).
- ⑳ SLOPE DRIVE UP TO 4'x4' LANDING.

EXTERIOR ELEVATION
GENERAL NOTES

- ① EXTERIOR SIGNAGE SUPPLIED & INSTALLED BY TENANT. LANDLORD'S ELECTRICAL CONTR. TO PROVIDE ADEQUATE POWER AND FINAL CONNECTION TO SIGNS.
- ② REFER TO SIGN COMPANY'S SHOP DRAWINGS FOR EXACT SPECIFICATIONS.
- ③ PAINTED CHU AND EIFS COLOR TO MATCH BENJAMIN MOORE'S "NAVAJO WHITE".

T. BYRON SMITH ARCHITECTS LTD.

NEW ORLEANS, LOUISIANA 70175
PR. 564-899-3128
P.O. BOX 15575

PROPOSED BLOCKBUSTER VIDEO ON MILITARY ROAD SUDRELL, LOUISIANA

EXTERIOR ELEVATION
GENERAL NOTES

JOB NO.	REVISION NO.
DATE	BY
DRAWN BY	CHECKED BY
COMPUTER FILES	SCALE

A-2

