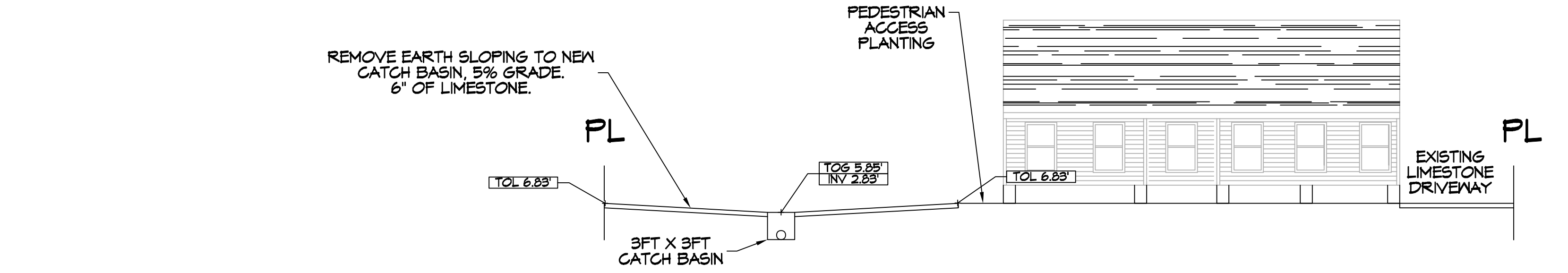
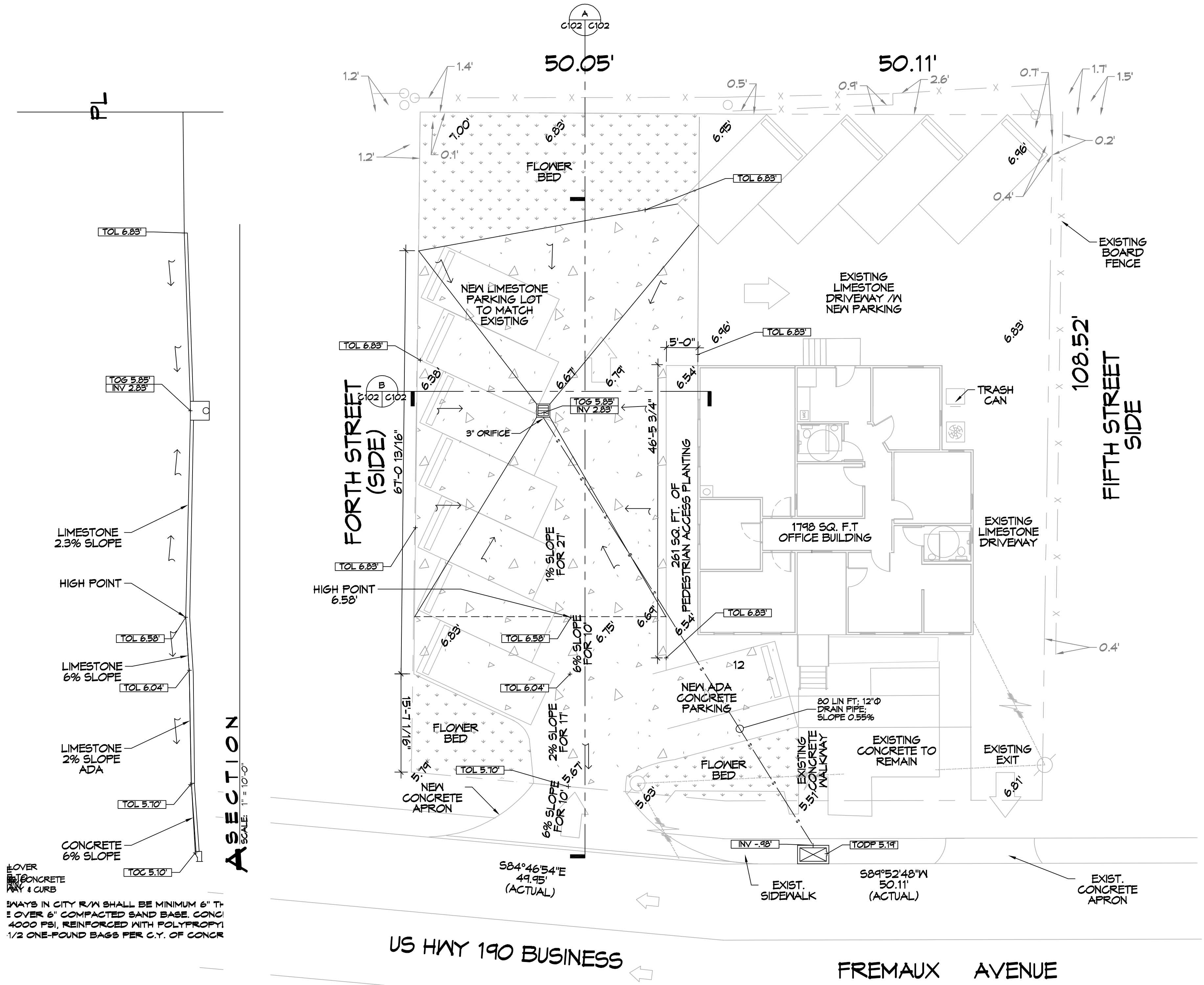


FILE NAME: A:\Projects\17-0000\17-0000.dwg DATE: 08/04/22 10:54:11 AM



B SECTION
SCALE: 1" = 10'-0"



A SECTION
SCALE: 1" = 10'-0"

COVER
CONCRETE
CURB
SPALLS IN CITY R/W SHALL BE MINIMUM 6" THICK OVER 6" COMPACTED SAND BASE, CONC. 4000 PSI, REINFORCED WITH POLYPROPYLENE 1/2 ONE-POUND BAGS PER C.Y. OF CONCR.

5 DRAINAGE PLAN
SCALE: 1" = 10'-0"

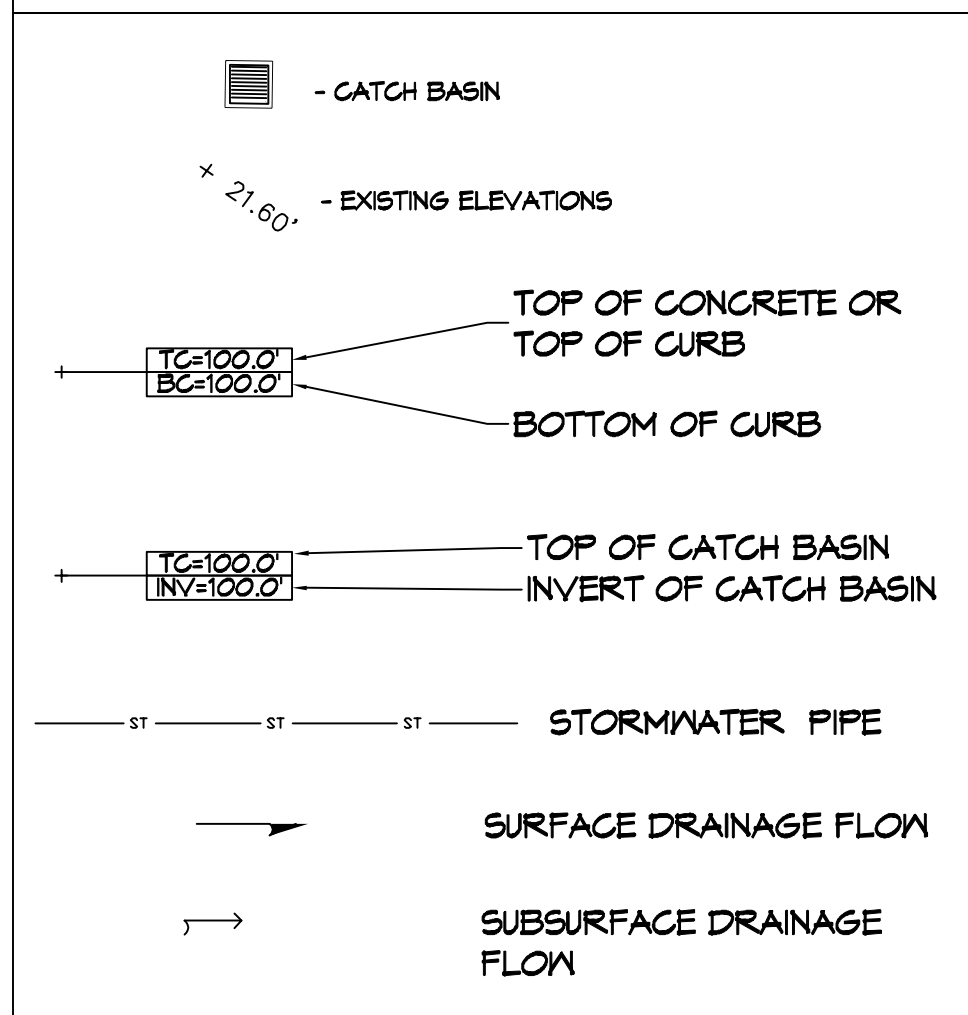
GENERAL SITE DRAINAGE NOTES

1. CONTRACTOR SHALL COMPLY WITH THE STORMWATER POLLUTION PREVENTION PLAN.
2. ALL STORMWATER PIPING SHALL BE SDR 35 POLYVINYL CHLORIDE PLASTIC PIPE, MEETING ASTM D 3034. DRAIN PIPE(S) SHALL BE THE BELL AND SPIGOT TYPE WITH 'O' RING RUBBER GASKETS. THE BELLS OF THE PIPES SHALL BE LAID UPSTREAM. ALL JOINTS SHALL BE WRAPPED WITH GEOTEXTILE FABRIC. ALL PIPES SHALL REQUIRE 12" COMPACTED SAND OR LIMESTONE BEDDING. ELEVATIONS SHOWN ARE MSL.
3. FIELD VERIFY ALL ELEVATIONS AND DRAINAGE SYSTEM PLACEMENT PRIOR TO START OF WORK.
4. THE PERIMETER OF THE PROJECT PROPERTY SHALL BE GRADED SUCH THAT NO RUNOFF IS DISCHARGED TO ADJACENT LOT(S).
5. CONTRACTOR SHALL OBTAIN WRITTEN PERMISSION PRIOR TO PLACING EQUIPMENT, PERSONNEL OR STARTING WORK ON NEIGHBORING PROPERTIES.

UTILITY AND SITE DISCLAIMER

1. THIS DRAWING IS NOT INTENDED TO BE UTILIZED AS A BOUNDARY SURVEY. IT HAS BEEN PROVIDED AS A COURTESY BASED ON CORNERS FOUND AND PROVIDED BY OWNER OR HIS REP.
2. UNDERGROUND UTILITIES MAY BE PRESENT ON THIS SITE WHICH MAY OR MAY NOT BE DEPICTED ON THIS PLAN. THIS MAP SHOULD NOT BE CONSIDERED DEFINITIVE AS TO LOCATION, NUMBER, TYPE, ETC. OF UTILITIES PRESENT ON THE SITE.
3. CONTRACTOR SHALL CONTACT LA ONE CALL PRIOR TO COMMENCEMENT. PRIVATE UTILITIES SHALL BE COORDINATED WITH OWNER OR THIRD PARTY LOCATION COMPANY.

SITE LEGEND

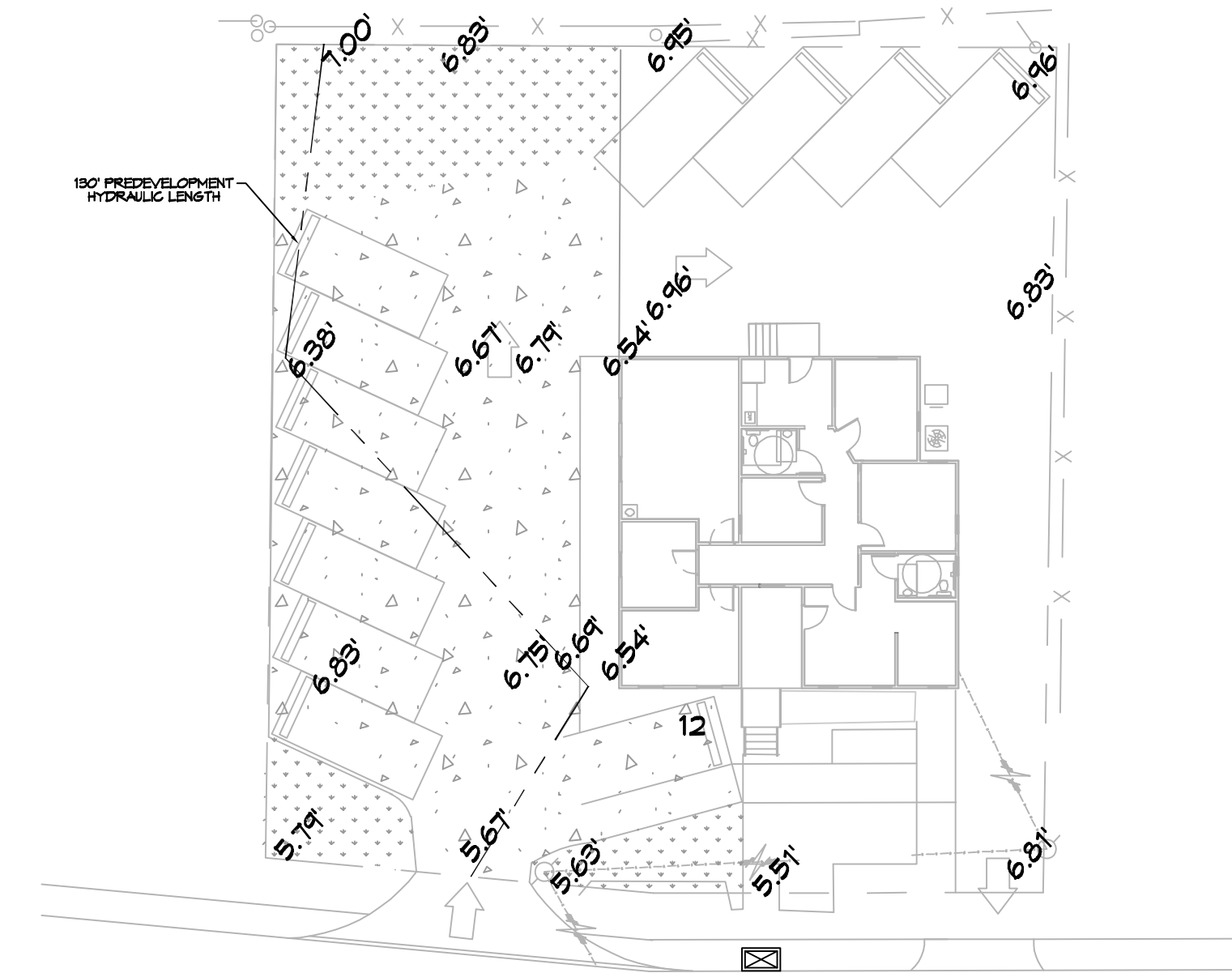


DRAINAGE ABBREVIATIONS

TC	TOP OF CATCH BASIN OR TOP OF CURB
BC	BOTTOM OF CURB
INV	INVERT
TOB	TOP OF BERM

DETENTION CALCULATIONS

1. ALL STORM WATER DETENTION WILL BE DETAINED IN THE NEW PARKING AREA.
2. STORM WATER OVERFLOW IS SET FOR AN ELEVATION OF 6.58'.
3. THE DETENTION AREA WAS MEASURED AT 20.8 S.F. USING THE OVERFLOW ELEVATION ABOVE AND SECTION E. THE WATER LEVEL ACROSS SECTION D WAS MEASURED AT 24.9 FT. THEREFORE THE DETENTION AREA WILL DETAIN 20.8 S.F. x 24.3 FT = 619.6 CU FT.
4. THE CATCH BASIN WILL BE 9 FT X 3 FT X 3 FT AND WILL DETAIN 21 CU FT.
5. TOTAL DETENTION IS 640.7 CU FT.
6. TOTAL DETENTION REQUIRED IS 615 CU FT.



6 PREDEVELOPMENT HYDRAULIC LENGTH
SCALE: 1" = 20'-0"

DAMMON ENGINEERING, INC.
LOUISIANA & MISSISSIPPI
www.dammonengineering.com
info@dammonengineering.com
PH: 985.649.5832
Chief Engineer: Brian Misch, PE
554 Old Spanish Trail
Slidell, LA 70458

DATE	REVISIONS



FLEUR DE LIS FIT COMPANY
442 FREMAUX AVE
SLIDELL, LA 70458
JOB No: 17-0000
DATE: 08-04-22
DRAWN BY: BAW
CHECKED BY: BAW

SHEET TITLE: DRAINAGE PLAN
DRAWING NUMBER:
C102
SHEET No: 2 of 3