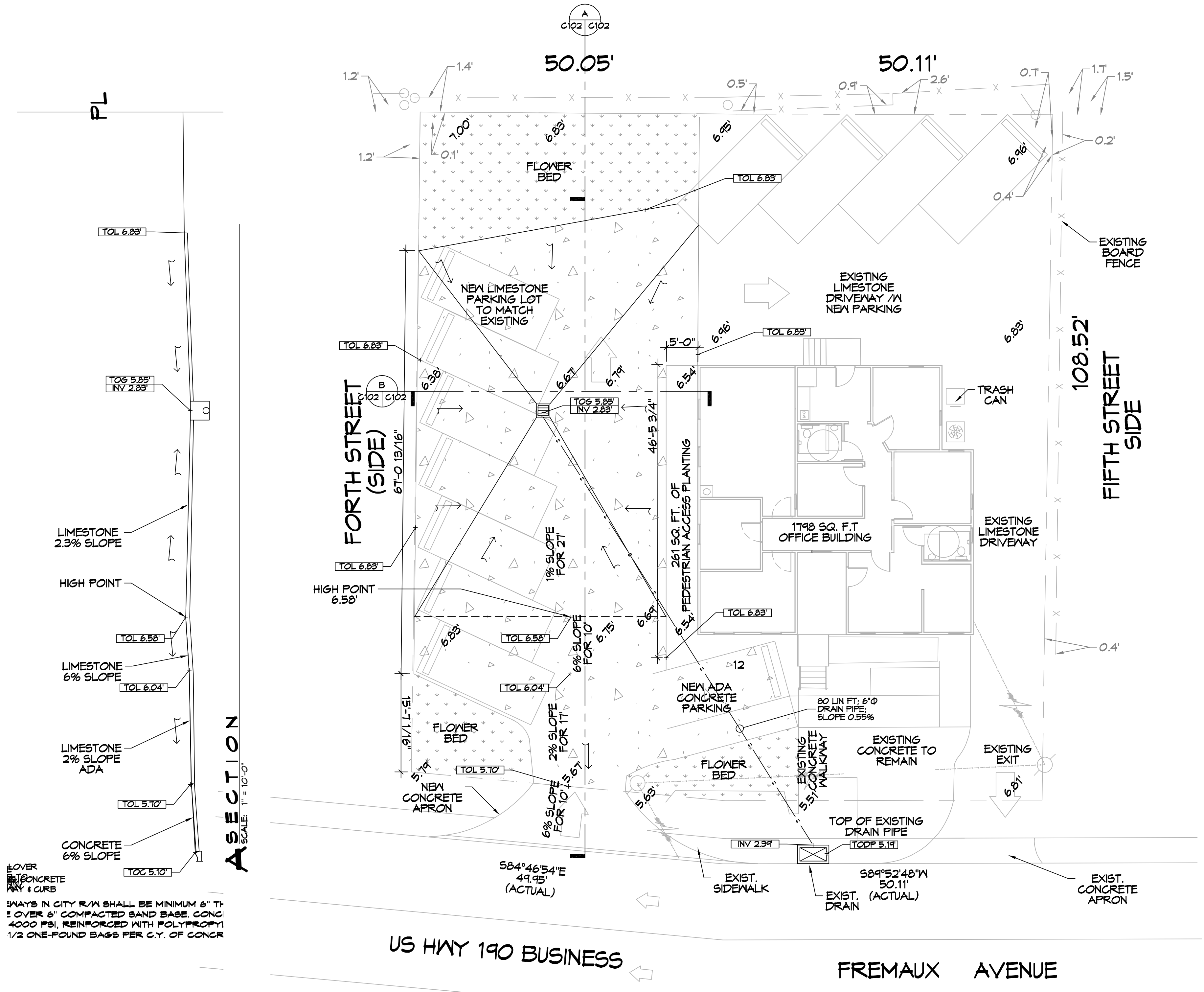
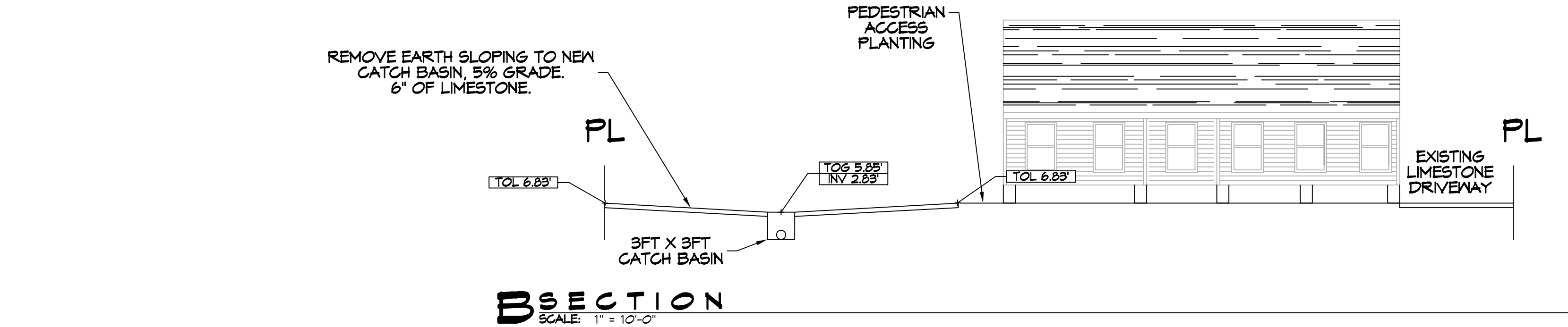


FILE NAME: J:\Projects\17-0000\17-0000.dwg DATE: 04/28/22 10:51:44 AM



COVER  
CONCRETE  
CURB  
SPALLS IN CITY R/W SHALL BE MINIMUM 6" THICK OVER 6" COMPACTED SAND BASE, CONC. 4000 PSI, REINFORCED WITH POLYPROPYLENE 1/2 ONE-POUND BAGS PER C.Y. OF CONCR.

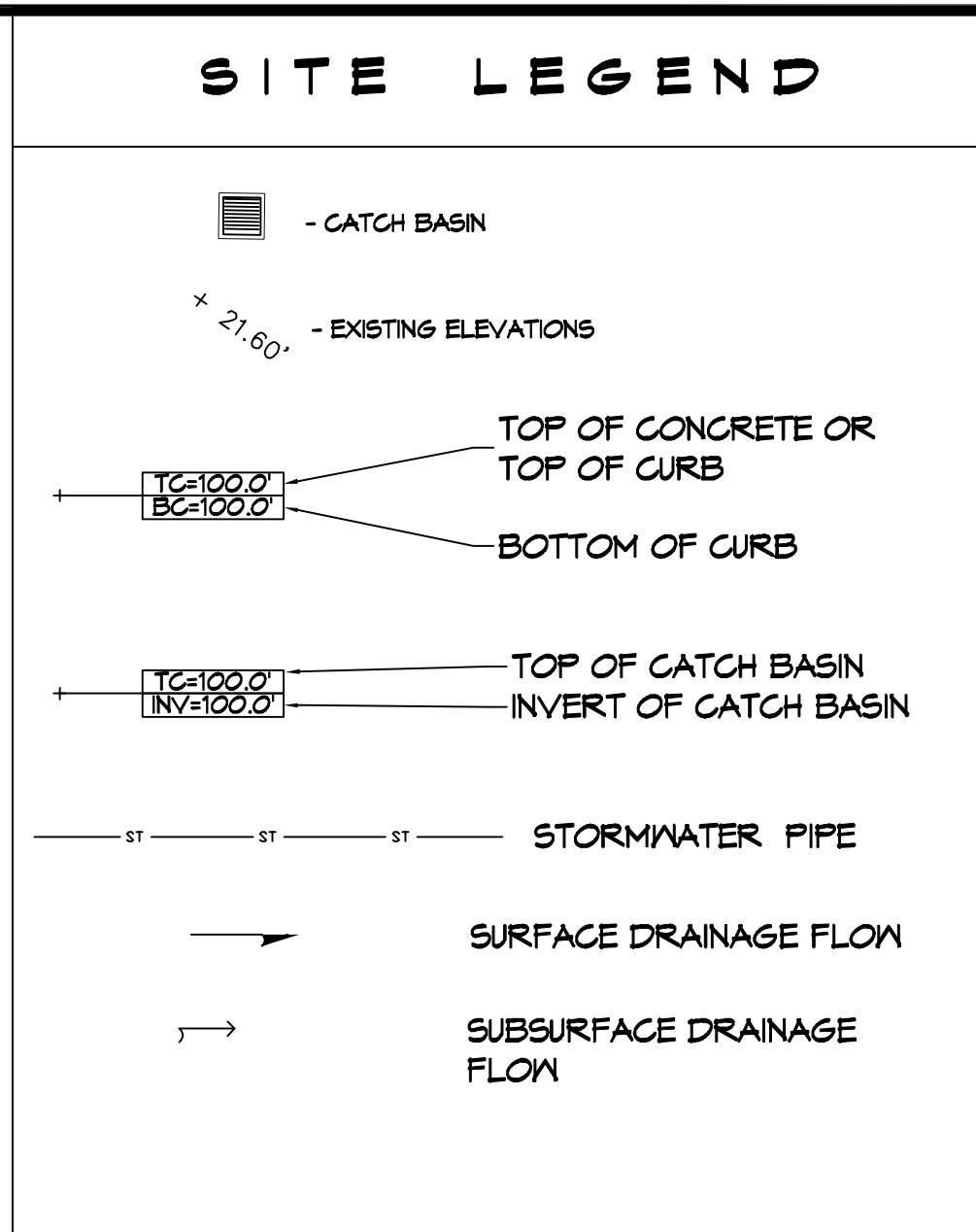
**5 DRAINAGE PLAN**  
SCALE: 1" = 10'-0"

**GENERAL SITE DRAINAGE NOTES**

- CONTRACTOR SHALL COMPLY WITH THE STORMWATER POLLUTION PREVENTION PLAN.
- ALL STORMWATER PIPING SHALL BE SDR 35 POLYVINYL CHLORIDE PLASTIC PIPE, MEETING ASTM D 3034. DRAIN PIPE(S) SHALL BE THE BELL AND SPIGOT TYPE WITH 'O' RING RUBBER GASKETS. THE BELLS OF THE PIPES SHALL BE LAID UPSTREAM. ALL JOINTS SHALL BE WRAPPED WITH GEOTEXTILE FABRIC. ALL PIPES SHALL REQUIRE 12" COMPACTED SAND OR LIMESTONE BEDDING. ELEVATIONS SHOWN ARE MSL.
- FIELD VERIFY ALL ELEVATIONS AND DRAINAGE SYSTEM PLACEMENT PRIOR TO START OF WORK.
- THE PERIMETER OF THE PROJECT PROPERTY SHALL BE GRADED SUCH THAT NO RUNOFF IS DISCHARGED TO ADJACENT LOT(S).
- CONTRACTOR SHALL OBTAIN WRITTEN PERMISSION PRIOR TO PLACING EQUIPMENT, PERSONNEL OR STARTING WORK ON NEIGHBORING PROPERTIES.

**UTILITY AND SITE DISCLAIMER**

- THIS DRAWING IS NOT INTENDED TO BE UTILIZED AS A BOUNDARY SURVEY. IT HAS BEEN PROVIDED AS A COURTESY BASED ON CORNERS FOUND AND PROVIDED BY OWNER OR HIS REP.
- UNDERGROUND UTILITIES MAY BE PRESENT ON THIS SITE WHICH MAY OR MAY NOT BE DEPICTED ON THIS PLAN. THIS MAP SHOULD NOT BE CONSIDERED DEFINITIVE AS TO LOCATION, NUMBER, TYPE, ETC. OF UTILITIES PRESENT ON THE SITE.
- CONTRACTOR SHALL CONTACT LA ONE CALL PRIOR TO COMMENCEMENT. PRIVATE UTILITIES SHALL BE COORDINATED WITH OWNER OR THIRD PARTY LOCATION COMPANY.

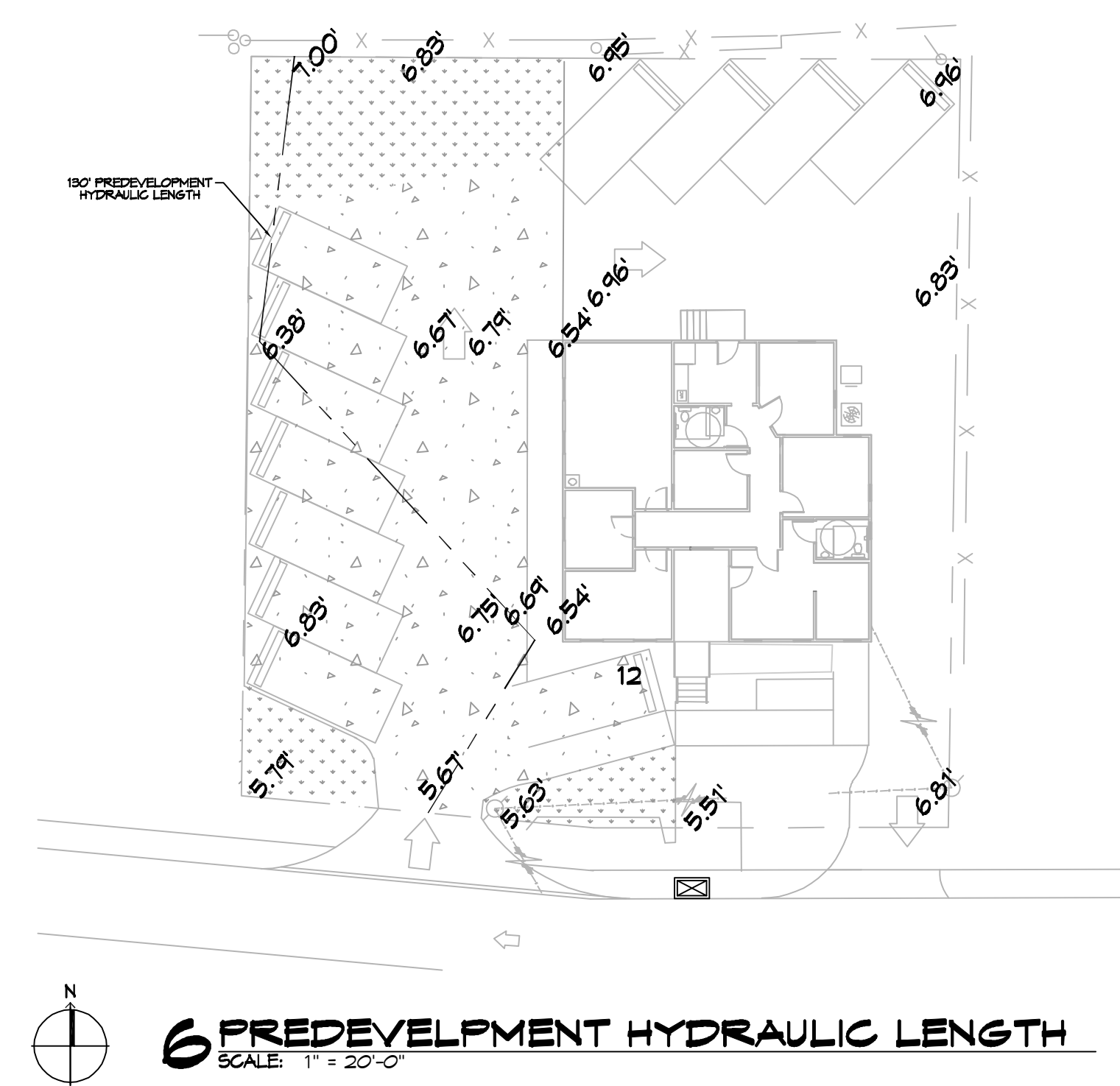


**DRAINAGE ABBREVIATIONS**

TC	TOP OF CATCH BASIN OR TOP OF CURB
BC	BOTTOM OF CURB
INV	INVERT
TOB	TOP OF BERM

**DETENTION CALCULATIONS**

- ALL STORM WATER DETENTION WILL BE DETAINED IN THE NEW PARKING AREA.
- STORM WATER OVERFLOW IS SET FOR AN ELEVATION OF 6.58'.
- THE DETENTION AREA WAS MEASURED AT 20.8 SQ. FT. USING THE OVERFLOW ELEVATION ABOVE AND SECTION E. THE WATER LEVEL ACROSS SECTION D WAS MEASURED AT 24.9 FT. THEREFORE THE DETENTION AREA WILL DETAIN 20.8 SQ. FT. x 24.9 FT = 619.6 CU. FT.
- THE CATCH BASIN WILL BE 9 FT X 3 FT X 3 FT AND WILL DETAIN 21 CU. FT.
- TOTAL DETENTION IS 640.7 CU. FT.
- TOTAL DETENTION REQUIRED IS 619.6 CU. FT.



**DAMMON ENGINEERING, INC.**  
LOUISIANA & MISSISSIPPI

www.dammonengineering.com  
info@dammonengineering.com  
PH: 985.649.5832

Chief Engineer: Brian Mistich, PE  
554 Old Spanish Trail  
Slidell, LA 70458

**REVISIONS**

#	DATE	DESCRIPTION
1		



**FLEUR DE LIS FIT COMPANY**  
442 FREMAUX AVE  
SLIDELL, LA 70458

JOB No: DATE: 04-28-22  
DRAWN BY: C&D CHECKED BY: BAW

SHEET TITLE: DRAINAGE PLAN  
DRAWING NUMBER:  
**C102**  
SHEET No: 2 of 3