

DATE: 04/20/22, 11:58 AM, PROJECT: 2200, SHEET: C101, DRAWN BY: BAW, CHECKED BY: C&D

DATE: 04/20/22, 11:58 AM, PROJECT: 2200, SHEET: C101, DRAWN BY: BAW, CHECKED BY: C&D

DATE: 04/20/22, 11:58 AM, PROJECT: 2200, SHEET: C101, DRAWN BY: BAW, CHECKED BY: C&D

DATE: 04/20/22, 11:58 AM, PROJECT: 2200, SHEET: C101, DRAWN BY: BAW, CHECKED BY: C&D

### LEGEND

-  DD BLANCHARD MAGNOLIA  
ALL CLASS "A" TREES, AT THE TIME OF PLANTING, SHALL HAVE A MINIMUM CALIPER OF AT LEAST ONE AND ONE-HALF (1-1/2) TO TWO (2) INCHES, MEASURED SIX (6) INCHES ABOVE THE ROOT BALL, AND A MINIMUM HEIGHT OF 8 FEET AT TIME OF PLANTING AND A MATURE AVERAGE CROWN SPREAD OF 20 FEET.
-  AZALEA  
SHRUB: A RELATIVELY LOW-GROWING BUSHY PLANT, USUALLY WITH WOODY STEMS. FOR THE PURPOSE OF THIS DEFINITION, GROUND COVER, TREES AND ANNUALS ARE NOT CONSIDERED SHRUBS. ALL SHRUBS, AT THE TIME OF PLANTING, SHALL HAVE A MINIMUM HEIGHT OF TWO (2) FEET.
-  CAMELLIA  
SHRUB: EVERGREEN BUSHY PLANT, USUALLY WITH WOODY STEMS. FOR THE PURPOSE OF THIS DEFINITION, GROUND COVER, TREES AND ANNUALS ARE NOT CONSIDERED SHRUBS. ALL SHRUBS, AT THE TIME OF PLANTING, SHALL HAVE A MINIMUM HEIGHT OF THREE(3) FEET.
-  DRIFT ROSE  
SHRUB: A RELATIVELY LOW-GROWING BUSHY PLANT, USUALLY WITH WOODY STEMS. FOR THE PURPOSE OF THIS DEFINITION, GROUND COVER, TREES AND ANNUALS ARE NOT CONSIDERED SHRUBS. SHALL HIDE BACKFLOW PREVENTER.
-  AFRICAN IRIS  
SHRUB: A RELATIVELY LOW-GROWING BUSHY PLANT. FOR THE PURPOSE OF THIS DEFINITION, GROUND COVER, TREES AND ANNUALS ARE NOT CONSIDERED SHRUBS.
-  PINE MULCH

NOTE: ALL TREES & SHRUBS TO BE MULCHED 1/3" DEPTH, ALL OTHER AREAS TO BE COVERED IN LIVE GROUND COVER OR SOD.

### LICENSED LANDSCAPER

BILL BROWN JR.  
LUXURY LANDSCAPE SERVICES 905-714-5211  
HORT. #2377

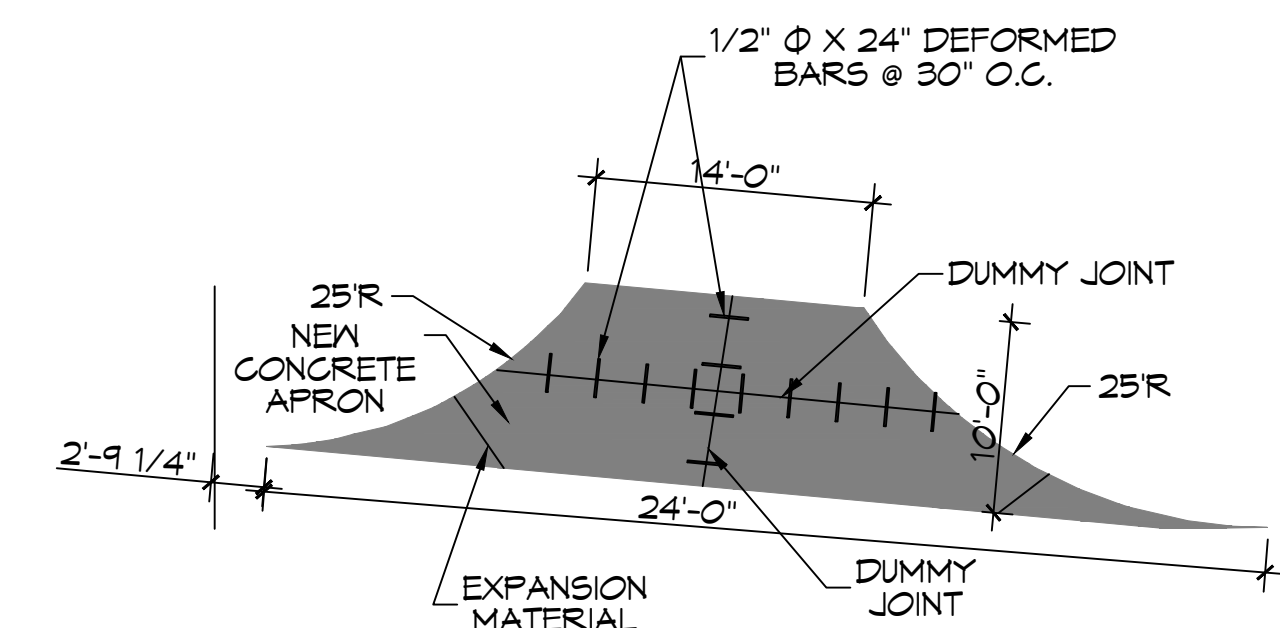
<b>PLANNING</b>	
ZONED	G-2 COMMERCIAL DISTRICT
<b>FLOOD ZONE</b>	
ZONE "AE"	
<b>BUILDING ELEVATION</b>	
BASE FLOOD ELEVATION "AE" = 11.0'	FINISHED FLOOR ELEVATION = 8.0'
<b>PARKING</b>	
BUSINESS AND PROFESSIONAL OFFICES	1 SPACE FOR EACH 200 SQUARE FEET OF GROSS FLOOR AREA.
1798 / 200 = 9	PARKING REQUIRED = 9
	ACTUAL PROVIDED = 12
<b>SITE LIGHTING</b>	
EXTERIOR LIGHTING SHALL BE SHADED OR INWARDLY DIRECTED IN SUCH A MANNER SO THAT NO DIRECT LIGHTING OR GLARE BE CAST BEYOND THE PROPERTY LINE. THE INTENSITY OF SUCH LIGHTING SHALL NOT EXCEED ONE FOOT CANDLE AS MEASURED AT THE ABUTTING PROPERTY LINE.	

### GENERAL PAVING NOTES

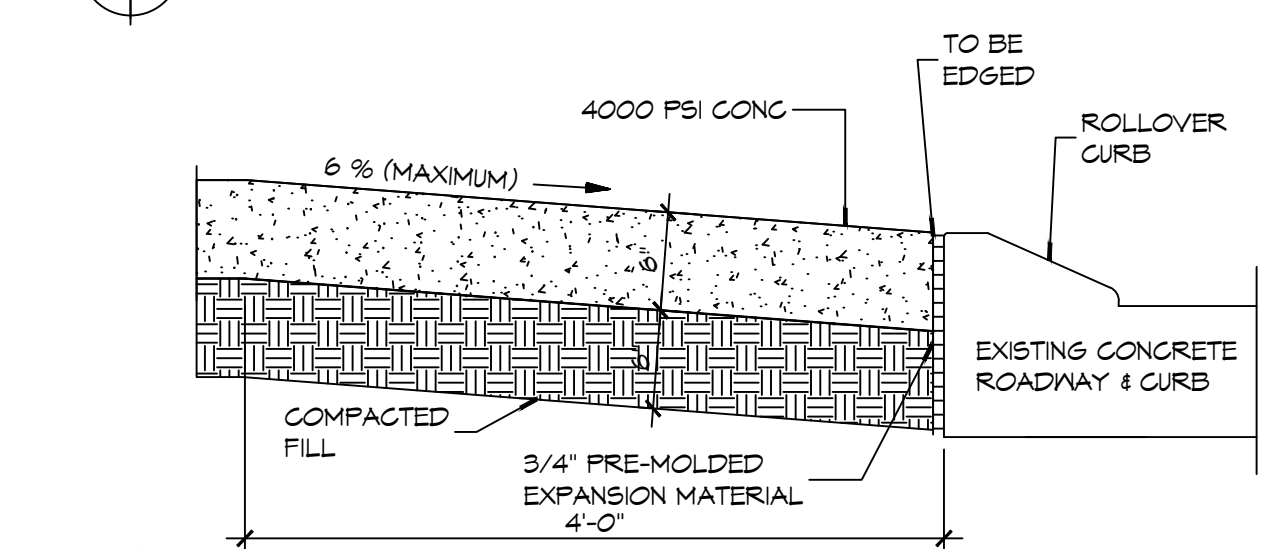
CONCRETE MIX DESIGN  
MIX FOR ONE CUBIC YARD OF FIBER-REINFORCED CONCRETE

28 DAY STRENGTH	4000 PSI
CEMENT (ASTM C-150, TYPE I/II)	4.64 SACKS (436 LBS.)
FLY ASH (ASTM C-618)	1.16 SACKS (109 LBS.)
GRAVEL (ASTM C-33, GRADE A)	1775 LBS.
SAND (ASTM C-33)	1226 LBS.
WATER (POTABLE)	30 GALLONS (250 LBS.) TYPE A
WATER REDUCER (ASTM C-494)	16.35 LBS.
AIR ENTRAINMENT	5% BY VOLUME, USE PER MANUFACTURER'S SPECS.
FIBER REINFORCEMENT	1.5 LBS./CY MICROFIBERS, AS SPECIFIED BELOW

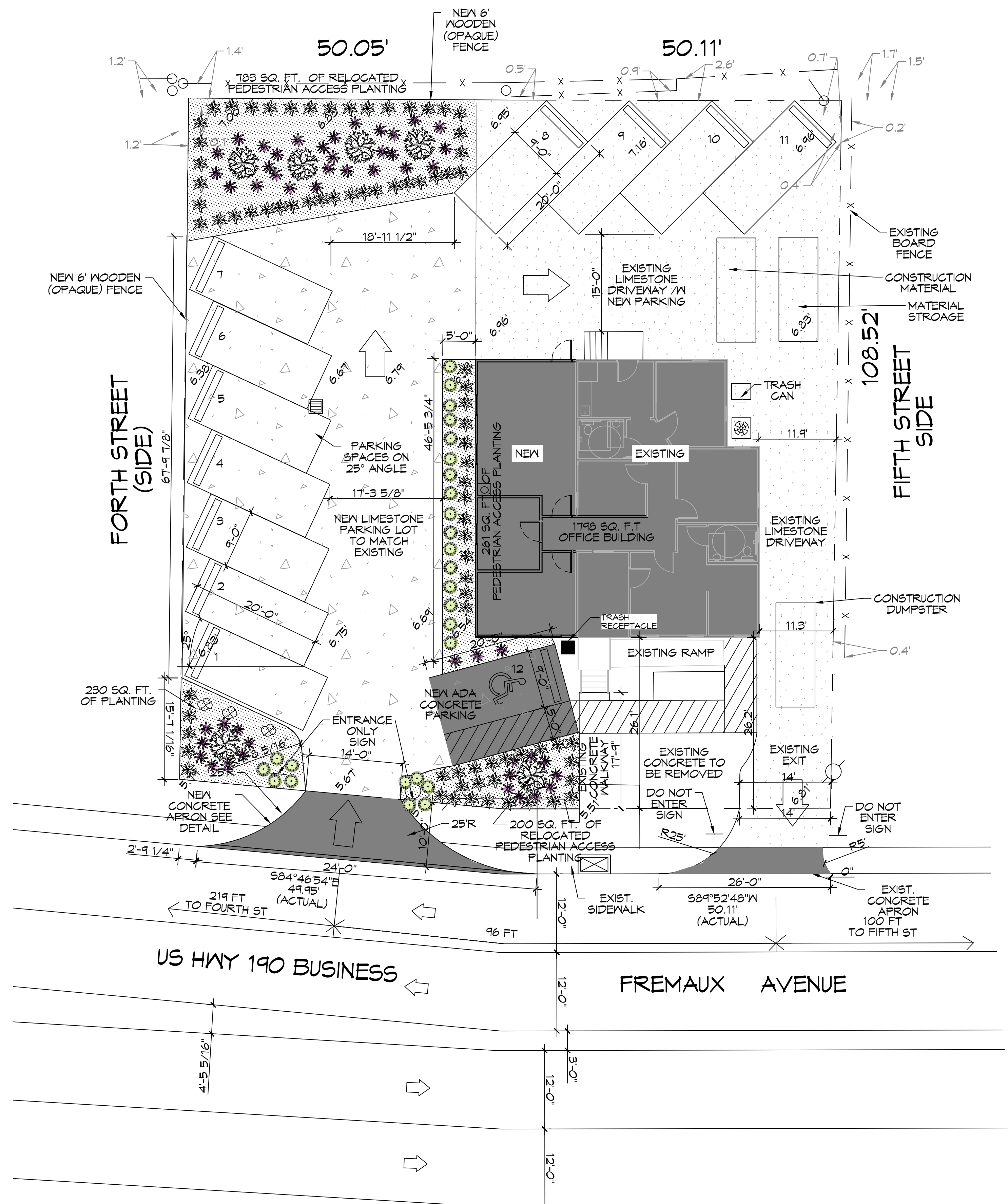
FIBER REINFORCEMENT FOR CONCRETE DRIVEWAY SHALL BE MATRIX MONOFILAMENT MICROFIBER AS MANUFACTURED BY FRG INDUSTRIES OR APPROVED EQUAL, APPLIED THROUGHOUT THE CONCRETE MIXTURE. ALTERNATE PRODUCTS MUST BE PREAPPROVED BY THE CITY ENGINEER IN WRITING. CELLULOSE (TREATED OR UNTREATED), AR GLASS, NYLON AND POLYESTER FIBERS ARE SPECIFICALLY PROHIBITED FROM USE.



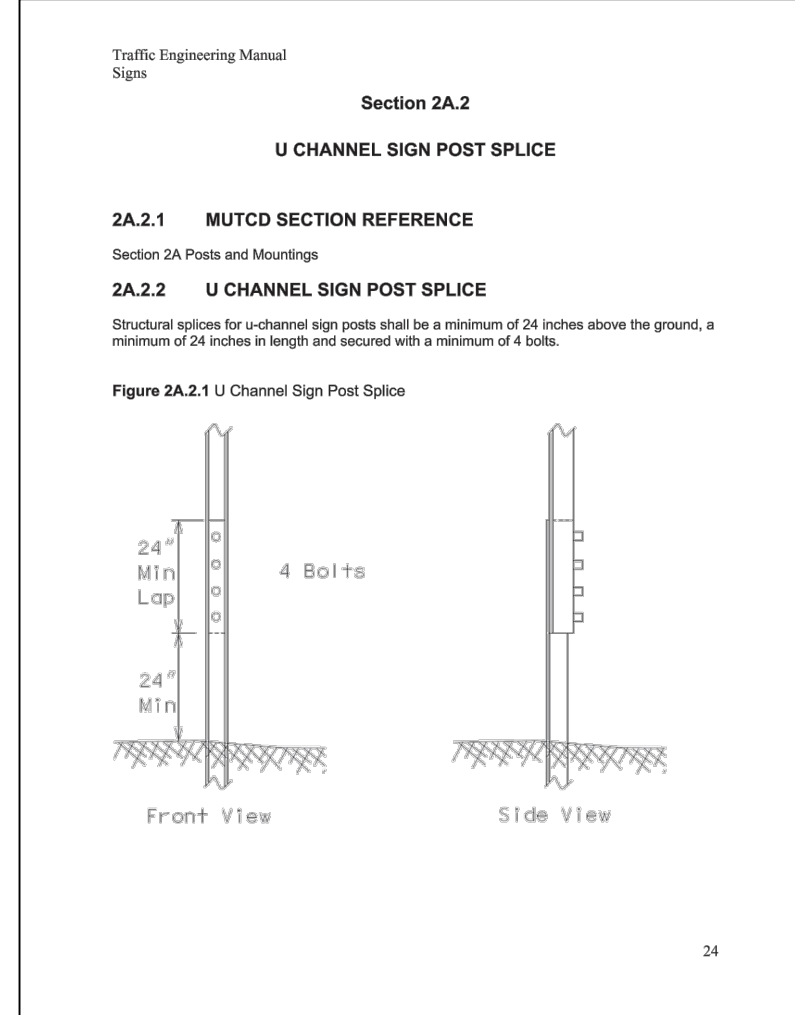
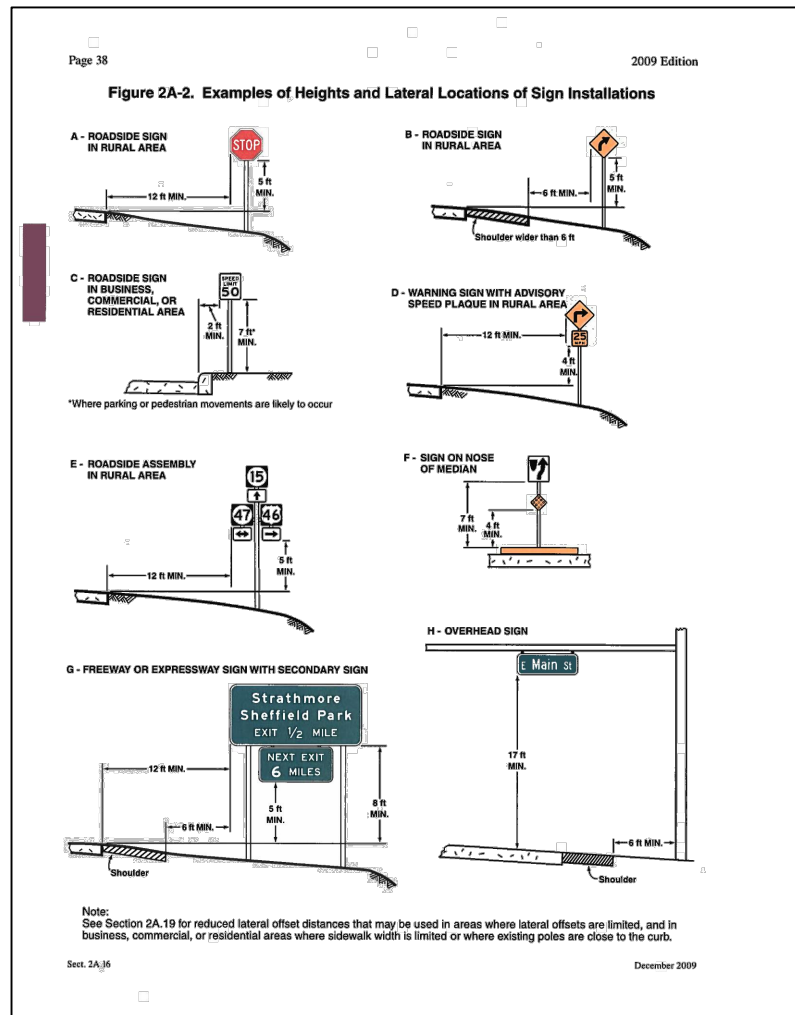
**3 PAVING PLAN**  
SCALE: 1" = 10'-0"



**4 PAVING PLAN**  
SCALE: 1" = 10'-0"



**1 SITE PLAN**  
SCALE: 1" = 10'-0"



**2 SIGN ASSEMBLYS**  
SCALE: N.T.S.

**DAMMON ENGINEERING, INC.**  
LOUISIANA & MISSISSIPPI  
www.dammonengineering.com  
info@dammonengineering.com  
PH: 985.449.9832

Chief Engineer: Brian Mistich, PE  
554 Old Spanish Trail  
Slidell, LA 70458

REVISIONS	DATE	DESCRIPTION

SEAL:

**FLEUR DE LIS FIT COMPANY**  
442 FREMAUX AVE  
SLIDELL, LA 70459

JOB No: 2200  
DATE: 04-20-22  
DRAWN BY: BAW  
CHECKED BY: C&D

SHEET TITLE: SITE PLAN  
DRAWING NUMBER: **C101**  
SHEET No: 1 of 3