

BUILDING CODE INFORMATION

APPLICABLE CODE
IBC 2009

OCCUPANCY TYPE OF GROUP(S) (IBC 2009 CHAPTER 3)
BUSINESS

CONSTRUCTION TYPE(S) (TABLE 503)
VA 8,862 S.F.

ALLOWABLE HEIGHT AND BUILDING AREA LIMITED BY TYPE OF CONSTRUCTION

MAXIMUM HEIGHT IN STORIES (SECTION 503 & 504, TABLE 503) - 2
MAXIMUM AREA IN SQUARE FEET (SECTION 503, 506 & 507, TABLE 503) - 9,000 S.F.

MIXED USE AND OCCUPANCY
SECTION 508

INCIDENTAL ACCESSORY OCCUPANCIES (HR) (TABLE 508.2.5)
ROOM OR AREA SEPARATION
N/A

REQUIRED SEPARATION OR OCCUPANCIES (HR) (TABLE 508.4)
N/A

FIRE RESISTANCE RATING REQUIREMENTS FOR BUILDING ELEMENTS
CHAPTER 6, TABLE 601

STRUCTURAL FRAMES - 0 HOURS
EXTERIOR BEARING WALLS - 0 HOURS
INTERIOR BEARING WALLS - 0 HOURS
EXTERIOR NON-BEARING WALLS - 0 HOURS
INTERIOR NON-BEARING WALLS - 0 HOURS
FLOOR CONSTRUCTION (INCLUDING SUPPORTING BEAMS AND JOISTS) - 0 HOURS
ROOF CONSTRUCTION (INCLUDING SUPPORTING BEAMS AND JOISTS) - 0 HOURS
FIRE RESISTANCE RATING FOR EXTERIOR WALLS BASED ON FIRE SEPARATION DISTANCE (TABLE 602) - 0 HOURS

MAXIMUM AREA OF EXTERIOR WALL OPENINGS
TABLE 705.B

NOTES ON SPECIFIC, PERTINENT PLAN ISSUES
15' SEPARATION UNLIMITED (UNPROTECTED, SPRINKLERED)

FIRE WALLS
SECTION 706, TABLE 706.4
REQUIRED? NO
IF YES THEN NOTE REQUIRED RATING - N/A

FIRE BARRIERS
SECTION 707

SHAFT ENCLOSURE(S) - NOTE REQUIRED RATING (SECTION 708.4) - NO - PER 708.2.7.1
EXIT ENCLOSURE - NOTE REQUIRED RATING (SECTION 1022.1) - 1 HOUR
EXIT PASSAGEWAY - NOTE REQUIRED RATING (SECTION 1023.3) - 1 HOUR
HORIZONTAL EXIT - NOTE REQUIRED RATING (SECTION 1025.2) - 2 HOURS
ATRIUMS - NOTE REQUIRED RATING (SECTION 1024.6) - N/A
SEPARATION FROM STAGE (SECTION 410.5) - N/A

OCCUPANT LOADS
(IBC 2009, SECTION 1004, TABLE 1004.1.1)

FLOOR	OCCUPANCY/FUNCTION OF SPACE	FLOOR AREA PER OCCUPANT (SF)	X ACTUAL SF	OCCUPANT LOAD
FIRST FLOOR	B	100 S.F.	PER OCCUPANT 4,085 S.F.	41
TOTAL OCCUPANT LOAD - FIRST FLOOR				41
SECOND FLOOR	B	100 S.F.	PER OCCUPANT 4,085 S.F.	41
TOTAL OCCUPANT LOAD -				82

EXIT REQUIREMENTS
(IBC 2009, SECTION 1005)

NUMBER OF ACCESSIBLE MEANS OF EGRESS REQUIRED PER FLOOR (TABLE 1015.1 & 1021.1)

FLOOR	# MEANS OF EGRESS REQUIRED
FIRST FLOOR	2
SECOND FLOOR	1 PER 101-38.2.4.6

TOTAL WIDTH OF EXITS
(OCCUPANT LOAD/# OF MEANS OF EGRESS) X (FACTOR IN SECTION 1005)

ATRIUMS	# OF EXITS PROVIDED	MULTIPLIER (SECTION 1005.1)	MINIMUM EXIT WIDTH
82	4	0.2	16.4"

MAXIMUM EXIT ACCESS TRAVEL DISTANCE (TABLE 1016.1) - 100'

MINIMUM CORRIDOR WIDTH (SECTION 1018.1 & SECTION 1005.1) - 44"

MAXIMUM DEAD END CORRIDOR (1018.4) - 20'
MAXIMUM COMMON PATH OF TRAVEL (1014.3) - 100'

CORRIDORS
CORRIDOR FIRE-RESISTANCE RATING (TABLE 1018.1) - 0 HOURS

STAIR REQUIREMENTS
(IBC 2009, SECTION 1009)

STAIRWAY WIDTH (TABLE 1015.1 & 1021.1)

TOTAL WIDTH OF EXITS
(OCCUPANT LOAD/# OF MEANS OF EGRESS) X (FACTORS IN SECTION 1005) OR 44" (WHICHEVER IS GREATER)

OCCUPANT LOAD	# OF STAIRWAYS	MULTIPLIER (SECTION 1005)	MINIMUM STAIRWAY WIDTH
41	1	0.2 = 8.2"	44" PER TABLE 1018.2

LIFE-SAFETY INFORMATION

APPLICABLE CODE(S)
NFPA 101 LIFE SAFETY CODE 2009
OCCUPANCY TYPE(S) AND CHAPTER(S)
BUSINESS (CHAPTER 36)
MULTIPLE, MIXED, OR SEPARATED OCCUPANCY (REFERENCE: CHAPTER 6)
N/A
REQUIRED SEPARATION OF OCCUPANCIES (REFERENCE: CHAPTER 6, TABLE 6.1.1.4.1)
N/A
CLASSIFICATION OF HAZARD OF CONTENTS (REFERENCE: OCCUPANCY CHAPTER AND 6.2.2; SPECIFY LOW, ORDINARY, OR HIGH)
ORDINARY
CONSTRUCTION TYPE(S) (REFERENCE: CHAPTER 6, TABLE A.8.2.1.2 AND COMMENTARY TABLE 8.1 IN HANDBOOK)
V (000)
MINIMUM CONSTRUCTION REQUIREMENTS (REFERENCE: OCCUPANCY CHAPTER)
SPRINKLERED
APPLICABLE DEFINITIONS (REFERENCE: CHAPTER 3)
N/A

OCCUPANCY
OCCUPANT LOAD CALCULATIONS (REFERENCE: TABLE 7.3.1.2)

FIRST FLOOR	OCCUPANCY/FUNCTION OF SPACE	FLOOR AREA PER OCCUPANT (SF)	X ACTUAL SF	OCCUPANT LOAD
BUSINESS	100 S.F.	3,941 S.F.		40
TOTAL OCCUPANT LOAD - FIRST FLOOR				40
SECOND FLOOR	BUSINESS	100 S.F.	.9415 S.F.	40
TOTAL OCCUPANT LOAD - SECOND FLOOR				40

INCIDENTAL USE AREAS AND REQUIRED SEPARATION
ROOM OR AREA SEPARATION
N/A

MEANS OF EGRESS

NUMBER OF EXITS (REFERENCE: OCCUPANCY CHAPTER AND CHAPTER 7)
2

MINIMUM EXIT SEPARATION DISTANCE FOR REMOTELY LOCATED EXISTS
(REFERENCE: SECTION 7.5; SPECIFY 1/2 OR 1/3 DIAGONAL DISTANCE OF AREA SERVED)
1/3 DIAGONAL 33'-0"

MAXIMUM DEAD-END CORRIDORS (REFERENCE: OCCUPANCY CHAPTER AND TABLE A.7.6)
50'

MAXIMUM COMMON PATH OF TRAVEL DISTANCE (REFERENCE: OCCUPANCY CHAPTER AND TABLE A.7.6)
75'

MAXIMUM TRAVEL DISTANCE TO EXISTS (REFERENCE: OCCUPANCY CHAPTER AND TABLE A.7.6)
100'

AREA OF REFUGE REQUIREMENTS (REFERENCE: OCCUPANCY CHAPTER AND 7.2.1.2)
N/A

CORRIDOR OR PASSAGEWAY WIDTH REQUIREMENTS
(REFERENCE: OCCUPANCY CHAPTER, TABLE 7.2.2.2.1.1(A) OR (B), AND TABLE 7.2.2.2.1.2(B))
N/A

STAIR WIDTH REQUIREMENTS
(REFERENCE: OCCUPANCY CHAPTER, TABLE 7.2.2.2.1.1(A) OR (B), AND TABLE 7.2.2.2.1.2(B))
44"

ACCESSIBILITY REQUIREMENTS FOR EGRESS COMPONENTS (7.5.4)
XXX

CAPACITY OF MEANS OF EGRESS (REFERENCE: 7.3 AND TABLE 7.3.3.1)

COMPONENT	OCCUPANT LOAD	X CAPACITY FACTOR	MINIMUM WIDTH
EXITS	41	0.2	8.2"

*MAIN ENTRANCE MUST BE SIZED TO ACCOMMODATE 1/2 OCCUPANT LOAD OF BUILDING.

FIRE RESISTANCE RATING REQUIREMENTS
CHAPTER 6

EXTERIOR BEARING WALLS (REFERENCE TABLE A.8.2.1.2 BASED ON CONSTRUCTION TYPE) - 0 HOURS
INTERIOR BEARING WALLS (REFERENCE TABLE A.8.2.1.2 BASED ON CONSTRUCTION TYPE) - 0 HOURS
COLUMNS (REFERENCE TABLE A.8.2.1.2 BASED ON CONSTRUCTION TYPE) - 0 HOURS
BEAMS, GIRDERS, TRUSSES, AND ARCHES (REFERENCE TABLE A.8.2.1.2 BASED ON CONSTRUCTION TYPE) - 0 HOURS
FLOOR - CEILING ASSEMBLIES (REFERENCE TABLE A.8.2.1.2 BASED ON CONSTRUCTION TYPE) - 0 HOURS
ROOF - CEILING ASSEMBLIES (REFERENCE TABLE A.8.2.1.2 BASED ON CONSTRUCTION TYPE) - N/A
EXTERIOR NON-BEARING WALLS (REFERENCE TABLE A.8.2.1.2 BASED ON CONSTRUCTION TYPE) - 0 HOURS
INTERIOR NON-BEARING WALLS (REFERENCE TABLE A.8.2.1.2 BASED ON CONSTRUCTION TYPE) - 0 HOURS
SHAFT ENCLOSURE (SECTION 8.6.5) - 0 HOURS
EXIT ENCLOSURE - 1 HOUR
EXIT PASSAGEWAY / EXIT ACCESS CORRIDORS - N/A
HORIZONTAL EXIT - 2 HOURS
ATRIUMS - N/A
MEZZANINES - N/A
CONCEALED SPACES AND DRAFTSTOPS - N/A
STORAGE, BOILER, OR FURNACE ROOMS - N/A
COMMUNICATING SPACES (SECTION 8.6.6) - N/A

OPENING PROTECTIVES
CHAPTER 8, TABLE 8.3.4.2

COMPONENT	WALLS & PARTITIONS FIRE RATING (HR)	FIRE DOOR ASSEMBLIES	FIRE WINDOW ASSEMBLIES (HR)
ELEVATOR:	1 HR	1 HR	
STAIRWAYS:	1 HR	1 HR	
SMOKE BARRIERS:	1 HR	1/3 HR	

ADDITIONAL CODE REQUIREMENTS
OCCUPANCY CHAPTER 36

EXTINGUISHMENT REQUIREMENTS - SPRINKLER (REQUIRED)
SUBDIVISION OF BUILDING SPACE - N/A
DETECTION, ALARM, AND COMMUNICATIONS SYSTEMS - NO
EMERGENCY LIGHTING - PER 30.2.6
SPECIAL PROVISIONS - STAGES AND PLATFORMS: N/A
OTHER - N/A
EMERGENCY LIGHTING - XXX

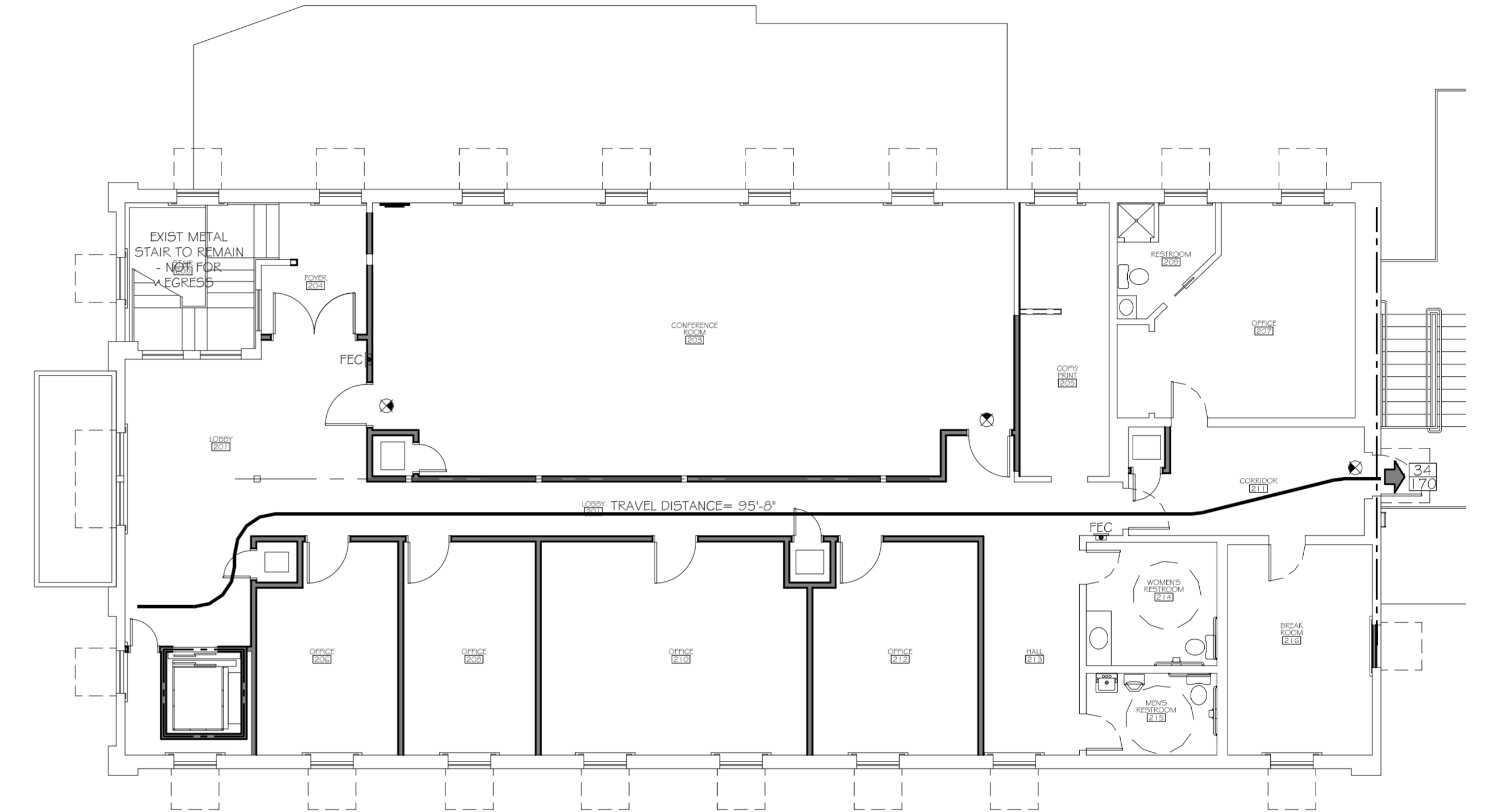
ALLOWABLE HEIGHT AND BUILDING AREA
PER IBC EQUIVALENT CONSTRUCTION TYPE (REFERENCE COMMENTARY TABLE 8.1 IN THE HANDBOOK)

CONSTRUCTION TYPE (NFPA) - V (000)
CONSTRUCTION TYPE (IBC) - VA
MAXIMUM HEIGHT IN STORIES (REFERENCE: IBC TABLE 503) - 3
MAXIMUM HEIGHT IN FEET (REFERENCE: IBC TABLE 503) - 55 FEET
MAXIMUM AREA IN SQUARE FEET (REFERENCE: IBC TABLE 503) - 18,000 S.F.

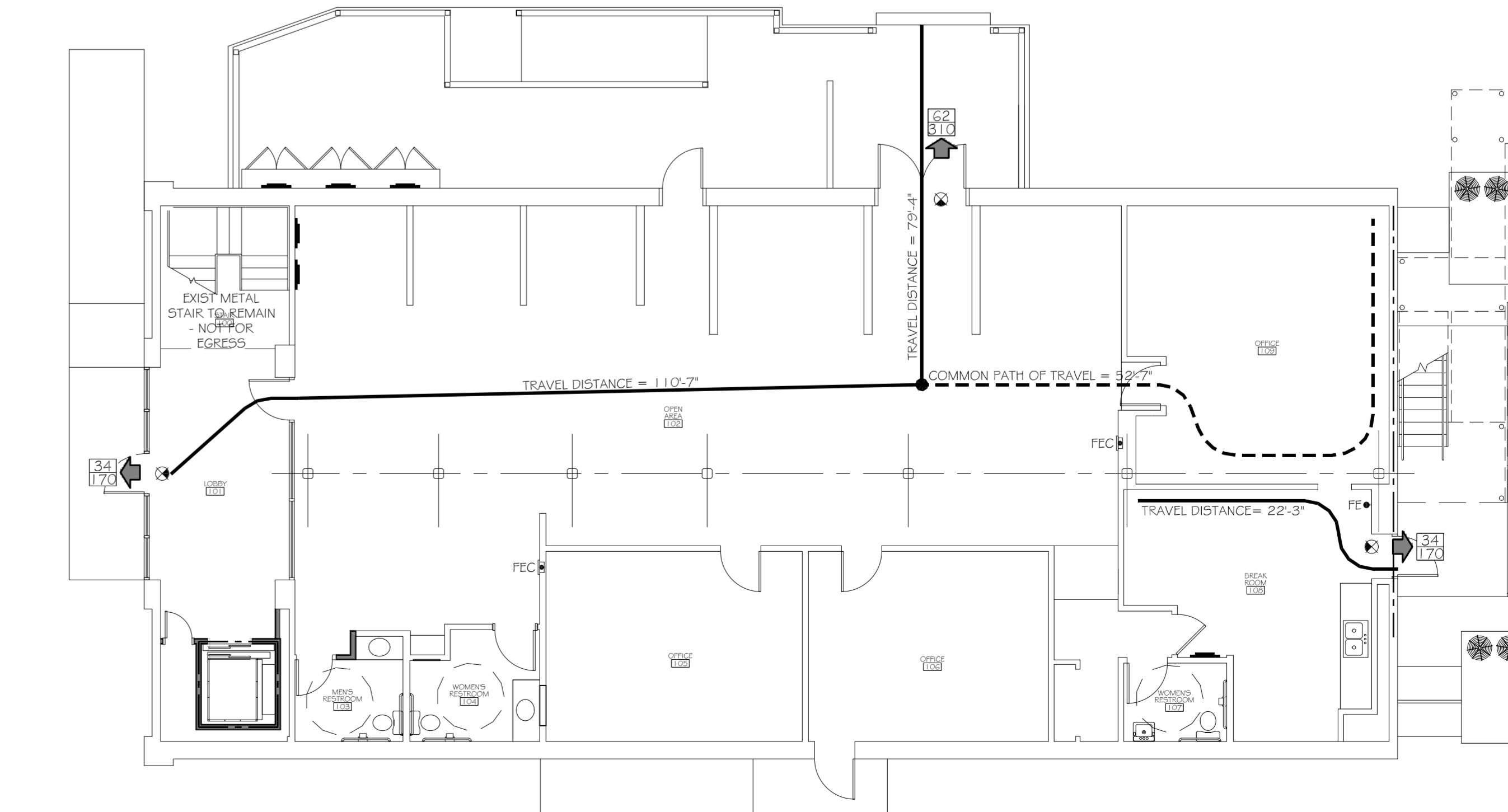
LEGEND

SYMBOLS

- ➔ EXITS
- 45 DOOR FIRE RATING (MINUTES)
- 54/176 DOOR WIDTH/EGRESS CAPACITY
- ⊗ EXIT LIGHT
- FE FIRE EXTINGUISHER CABINET
- FE FIRE EXTINGUISHER W/ WALL MOUNTED BRACKET
- COMMON PATH OF TRAVEL/TRAVEL DISTANCE
- TRAVEL DISTANCE
- DECISION POINT



2 SECOND FLOOR LIFE-SAFETY PLAN
SCALE: 1/8" = 1'-0"



BUILDING IS FULLY SPRINKLERED

FIRST FLOOR LIFE-SAFETY PLAN
SCALE: 1/8" = 1'-0"

DAMMON
ENGINEERING, INC.
Architects & Engineers

SLIDELL CHAMBER OF COMMERCE
1806 FRONT STREET
SLIDELL, LA

#	DESCRIPTION	DATE

JOB No: 2184
DATE: 10-14-2013

DRAWN BY: KJK
CHECKED BY: KJK

SHEET No: 3 of 17

G2

dammonengineering.com
 dammoneng@slidellchc.net
 PHONE: 985-649-5432
 FAX: 985-641-5950
 CHIEF ENGINEER: BRADLET DAMMON, P.E.
 CHIEF ARCHITECT: KEVIN KITCHEN, NCARB
 554 OLD SPANISH TRAIL
 SLIDELL, LA 70458