

JACUZZI/POOL PILING & BEAM PLAN  
SCALE: 3/8" = 1"

PILING ELEVATIONS UNDER JACUZZI			
DEPTHS FROM TOP OF JACUZZI CORNING			
PILE NO	PILE CUT OFF	TO TOP OF JACUZZI SLAB	TO TOP OF BEAM *
1	5 FT 4 IN	3 FT 8 IN	4 FT 4 IN
2	6 FT 6 IN	3 FT 8 IN	5 FT 6 IN
3	5 FT 4 IN	3 FT 8 IN	4 FT 4 IN
4	6 FT 10 IN	3 FT 8 IN	5 FT 10 IN
5	5 FT 4 IN	3 FT 8 IN	4 FT 4 IN
6	7 FT 3 IN	3 FT 8 IN	6 FT 3 IN

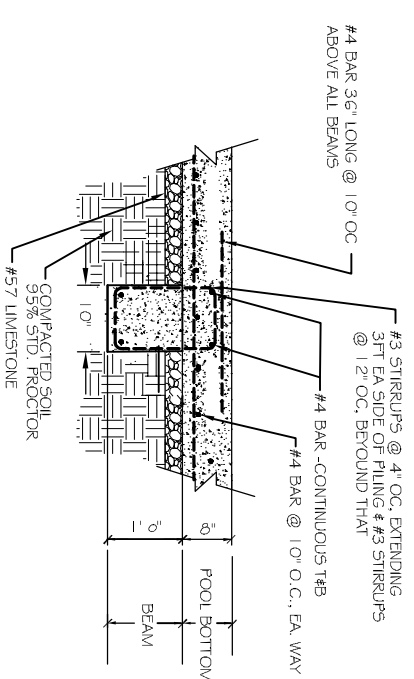
PILING ELEVATIONS UNDER POOL			
DEPTHS FROM TOP OF POOL CORNING			
PILE NO	PILE CUT OFF	TO TOP OF POOL SLAB	TO TOP OF BEAM *
7	5 FT 6 IN	3 FT 9 IN	4 FT 6 IN
8	5 FT 6 IN	3 FT 9 IN	4 FT 6 IN
9	5 FT 6 IN	3 FT 9 IN	4 FT 6 IN
10	5 FT 6 IN	3 FT 9 IN	4 FT 6 IN
11	5 FT 10 IN	3 FT 2 IN	4 FT 10 IN
12	5 FT 10 IN	3 FT 2 IN	4 FT 10 IN
13	5 FT 10 IN	3 FT 2 IN	4 FT 10 IN
14	5 FT 10 IN	3 FT 2 IN	4 FT 10 IN
15	6 FT 3 IN	4 FT 7 IN	5 FT 3 IN
16	6 FT 3 IN	4 FT 7 IN	5 FT 3 IN
17	6 FT 3 IN	4 FT 7 IN	5 FT 3 IN
18	6 FT 3 IN	4 FT 7 IN	5 FT 3 IN

\* NOTE THAT POOL SLAB SITS ON BEAM.  
DESIGN OF PILES IS BY OTHERS.  
SEE LATEST CIVIL DRAWING FOR ELEV. OF TOP OF CORNING.  
TOP OF PILE CUT OFF ELEV. ARE GIVEN AS FT. & IN.,  
BELOW POOL CORNING

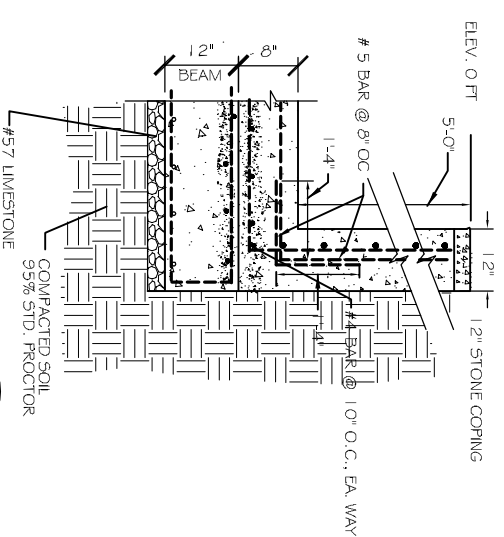


**NOTES:**

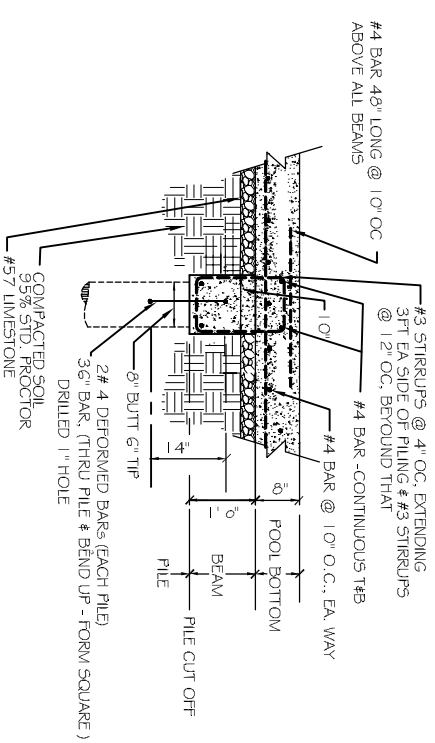
- 6" TIP 8" BUTT DRIVEN TO 1.5' BELOW NAUTRAL GROUND. FREDRILL PILES AS REQUIRED PER SOIL REPORT PROVIDED TO ENGINEER. PROJECT # 19511 DATED 10-27-06
- CONCRETE SHALL BE RATED 4000 PSI, 28 DAYS
- PRE PUNCHING OR PRE DRILLING SHOULD BE MADE USING A PUNCH OR BIT NO LARGER THAN 75% OF THE TIP DIAMETER OF THE TIMBER PILES. PRE DRILLING THROUGH SURFACE MATERIALS TO DEPTHS OF 6 FEET OR LESS MAY BE BY DRY AUGER METHODS.
- SMALL TREATED ASTM D 25 QUALITY TIMBER PILES WITH MINIMUM TIP DIAMETERS OF 6 INCHES MAY BE DRIVEN WITH A DROP HAMMER OR A SINGLE ACTING AIR HAMMER HAVING A MANUFACTURES RATED ENERGY OF 7,250 FT-LBS PER BLOW. IF A DROP HAMMER IS USED, THE RAM WEIGHT SHOULD NOT EXCEED 2,500 POUNDS AND THE DROP SHOULD NOT EXCEED 3 FOOT.
- REFUSAL CRITERIA FOR THE TIMBER PILES MAY BE TAKEN AS 25 BLOWS PER FOOT WITH THE RECOMMEND HAMMERS TO MINIMIZE DAMAGE TO THESE PILES. IF THE PILES ARE DRIVEN WITH THE AID OF A FOLLOWER, OR IF THE PILE DRIVING HELDUP IS ALLOWED TO IMPACT THE GROUND SURFACE THE ENGINEER SHOULD BE CONSULTED TO ADJUST THESE REFUSAL CRITERIA. IF PILES DO NOT ACHIEVE THEIR INTENDED EMBEDMENTS THE ENGINEER SHALL BE NOTIFIED.
- SEE RC/S DRAWINGS FOR POOL DRAINS, PLUMBING, ETC....



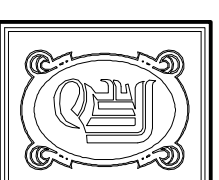
TYP. SECTION A  
N.T.S.



TYP. SECTION B  
N.T.S.



TYP. SECTION C  
N.T.S.



**DAMMON ENGINEERING, INC.**  
 CHIEF ENGINEER  
 EMETT DAMMON, P.E.  
 CHIEF ARCHITECT  
 ROBERT WILTSE

554 OLD SPANISH TRAIL  
 SUITE 1, LA. 70458  
 OFFICE: 985-649-5832  
 FAX: 985-641-5950

WWW.DAMMONENGINEERING.COM  
 EMAIL: DAMMONENG@BELLOUTH.NET

ARCHITECTURE  
 ENGINEERING  
 STUDIES  
 PLANNING  
 INVESTIGATION  
 EXPERT WITNESS

LORIA  
 RESIDENCE  
 NEW ORLEANS, LA

PILING  
 FOUNDATION  
 GRADE BEAM  
 PLAN

REV:

SCALE: AS NOTED

JOB#:

DATE: 06-10-11

SHEET

S-1