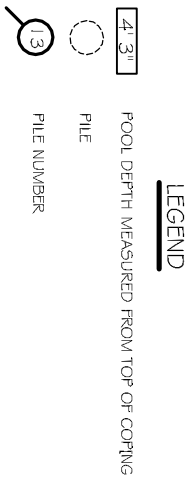


JACUZZI/POOL PILING & BEAM PLAN
SCALE: 3/8"=1'

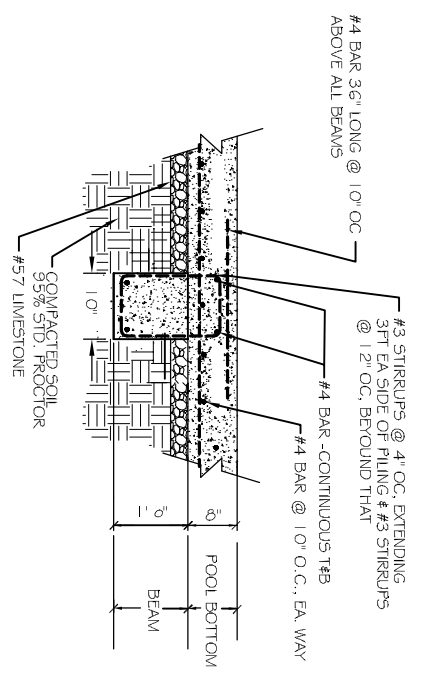
PILING ELEVATIONS UNDER JACUZZI		
PILE NO	PILE CUT OFF DEPTHS FROM TOP OF JACUZZI SLAB*	TO TOP OF BEAM*
1	5 FT 4 IN	3 FT 8 IN
2	6 FT 6 IN	3 FT 8 IN
3	5 FT 4 IN	3 FT 8 IN
4	6 FT 10 IN	3 FT 8 IN
5	5 FT 4 IN	3 FT 8 IN
6	7 FT 3 IN	3 FT 8 IN

PILING ELEVATIONS UNDER POOL		
PILE NO	PILE CUT OFF DEPTHS FROM TOP OF POOL SLAB*	TO TOP OF BEAM*
7	5 FT 6 IN	3 FT 9 IN
8	5 FT 6 IN	3 FT 9 IN
9	5 FT 6 IN	3 FT 9 IN
10	5 FT 6 IN	3 FT 9 IN
11	5 FT 10 IN	3 FT 2 IN
12	5 FT 10 IN	3 FT 2 IN
13	5 FT 10 IN	3 FT 2 IN
14	5 FT 10 IN	3 FT 2 IN
15	6 FT 3 IN	4 FT 7 IN
16	6 FT 3 IN	4 FT 7 IN
17	6 FT 3 IN	4 FT 7 IN
18	6 FT 3 IN	4 FT 7 IN

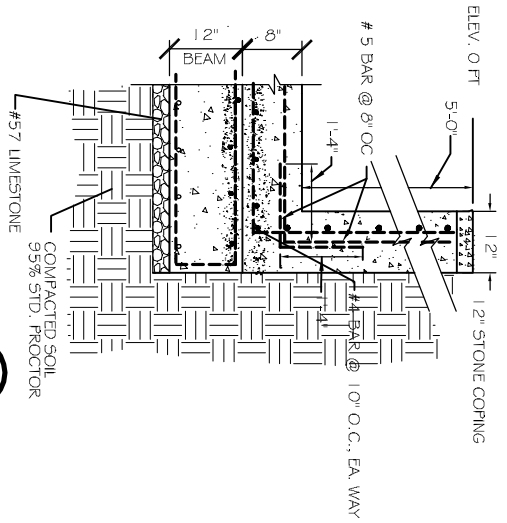


NOTES:

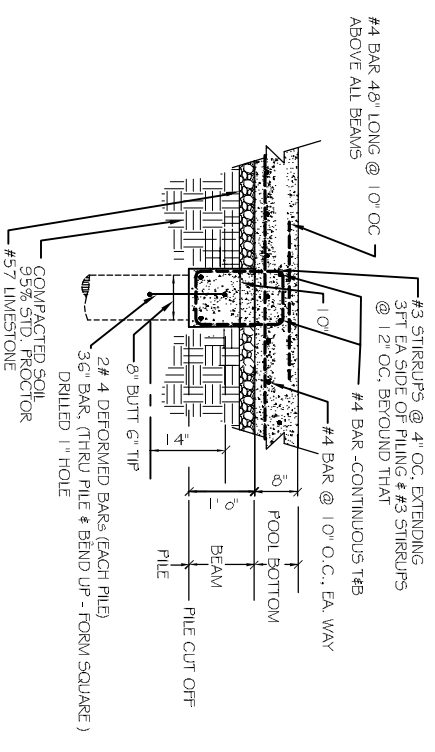
1. 6" TIP & BUTT DRIVEN TO 1.5' BELOW NAUTRAL GROUND. FREDRILL PILES AS REQUIRED PER SOIL REPORT PROVIDED TO ENGINEER PROJECT # 19511 DATED 10-27-06
2. CONCRETE SHALL BE RATED 4000 PSI, 28 DAYS
3. PRE PUNCHING OR PRE DRILLING SHOULD BE MADE USING A PUNCH OR BIT NO. LARGER THAN 75% OF THE TIP DIAMETER OF THE TIMBER PILES. PRE DRILLING THROUGH SURFACE MATERIALS TO DEPTHS OF 6 FEET OR LESS MAY BE BY DRY AUGER METHODS.
4. SMALL TREATED ASTM D 25 QUALITY TIMBER PILES WITH MINIMUM TIP DIAMETERS OF 6 INCHES MAY BE DRIVEN WITH A DROP HAMMER OR A SINGLE ACTING AIR HAMMER HAVING A MANUFACTURERS RATED ENERGY OF 7,250 FT-LBS PER BLOW. IF A DROP HAMMER IS USED, THE RAM WEIGHT SHOULD NOT EXCEED 2,500 POUNDS AND THE DROP SHOULD NOT EXCEED 3 FOOT.
5. REFUSAL CRITERIA FOR THE TIMBER PILES MAY BE TAKEN AS 25 BLOWS PER FOOT WITH THE RECOMMEND HAMMERS TO MINIMIZE DAMAGE TO THESE PILES. IF THE PILES ARE DRIVEN WITH THE AID OF A TOLLWER, OR IF THE PILE DRIVING HELMET IS ALLOWED TO IMPACT THE GROUND SURFACE THE ENGINEER SHOULD BE CONSULTED TO ADJUST THESE REFUSAL CRITERIA. IF PILES DO NOT ACHIEVE THEIR INTENDED EMBEDMENT'S THE ENGINEER SHALL BE NOTIFIED.
6. SEE RCIS DRAWINGS FOR POOL DRAINS, PLUMBING, ETC...



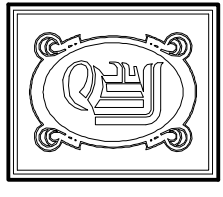
TYP. SECTION A
N.T.S.



TYP. SECTION B
N.T.S.



TYP. SECTION C
N.T.S.



DAMMON ENGINEERING, INC.
 CHIEF ENGINEER
 EMMETT DAMMONT, P.E.
 CHIEF ARCHITECT
 ROBERT WILTSE

554 OLD SPANISH TRAIL
 SLIDELL, LA. 70458
 OFFICE: 985-649-5832
 FAX: 985-641-5950

WWW.DAMMONENGINEERING.COM
 EMAIL: DAMMONEN@BELLSouth.NET

ARCHITECTURE
 ENGINEERING
 STUDIES
 PLANNING
 INVESTIGATION
 EXPERT WITNESS

RCI POOLS
 LAKEVIEW
 NEW ORLEANS, LA

PILING FOUNDATION GRADE BEAM PLAN

REV: _____
 SCALE: AS NOTED
 JOB#: _____
 DATE: 06-10-11